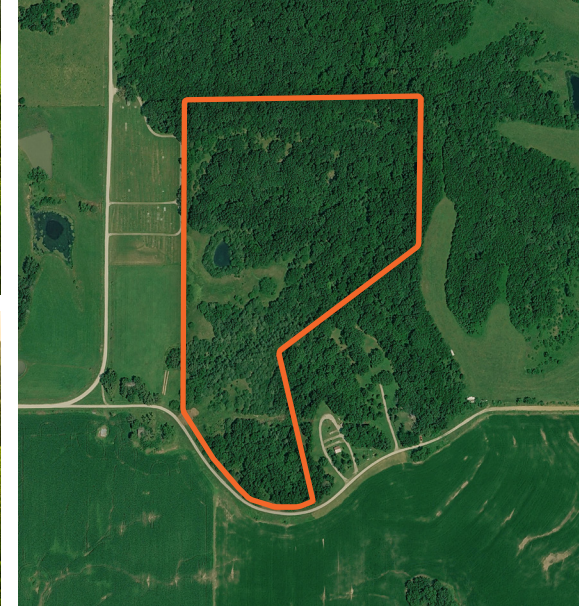


LAND FOR SALE

HIDDEN 28 +/- ACRE RECREATIONAL RETREAT

COUNTY: **WORTH**
STATE: **MISSOURI**
ACRES: **28**



PROPERTY FEATURES

- Mostly wooded with small openings
- Strong region for whitetail deer and turkey hunting
- 5 miles from Iowa border
- Perfect combination of cedars and hardwoods
- Ability to hunt on multiple wind directions
- Secluded one-acre field ideal for food plot
- 1/4-acre pond
- Well-maintained gravel road
- Access through neighboring cemetery
- Utilities available along CR 274
- 2025 taxes: \$113.61

For more information, contact:

DREW YARKOSKY, Land Agent

641.799.7279 | DYarkosky@MidwestLandGroup.com

MidwestLandGroup.com

