

MIDWEST LAND GROUP PRESENTS

34.02 ACRES IN

MARQUETTE COUNTY WISCONSIN



MidwestLandGroup.com

MIDWEST LAND GROUP IS HONORED TO PRESENT

ESCAPE THE CITY: LOG RANCH HOME ON 34.02 +/- ACRES IN WESTFIELD

Welcome to W5587 County Road Z, located down a quiet, unpaved drive in Marquette County. This 34.02 +/- acre property offers space, privacy, and easy access to some of central Wisconsin's best public hunting and fishing — just a short drive from Grand River Marsh Wildlife Area, Lake Puckaway, and Buffalo Lake.

The 1994-built log ranch home offers approximately 3,564 total square feet, 5 bedrooms, and 3 bathrooms (2 full, 1 half), with a full, finished basement for hosting or entertaining. A private well, baseboard heat, and a large natural wood-burning fireplace that rounds out the

home. Enjoy the back deck with a screened-in porch and daily wildlife views right off your own land.

One will have no lack of storage space at this property, as two large barns and three storage sheds provide serious space for equipment, livestock, or a workshop.

A great fit for the outdoorsman who wants room to hunt and explore — or anyone ready to trade the city for open Wisconsin country roads. Schedule your private showing today!



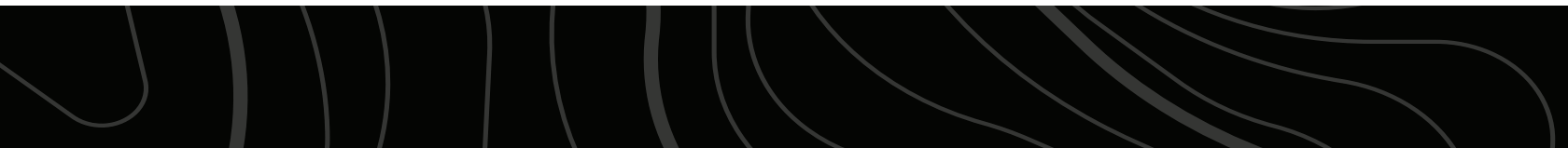
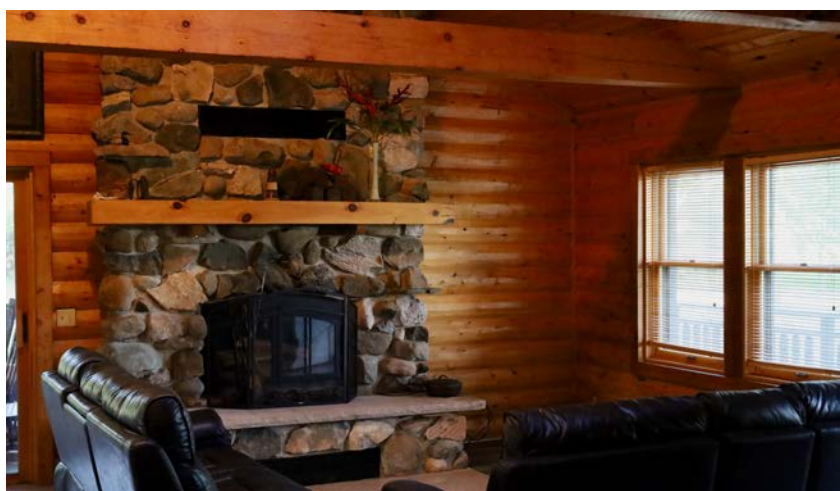
PROPERTY FEATURES

COUNTY: **MARQUETTE** | STATE: **WISCONSIN** | ACRES: **34.02**

- 5 bedrooms, 3 bathrooms (2 full, 1 half) across 3,564 sq. ft.
- Log-sided, one-story ranch home built in 1994
- Full, finished basement
- 2 large barns plus 3 storage sheds
- Short drive from Grand River Marsh Wildlife Area, Lake Puckaway, & Buffalo Lake
- Private well, baseboard heat, and wood-burning fireplace
- Back deck with screened-in porch overlooking the property
- Quiet, unpaved private drive in the Westfield School District
- Outside of any government programs

3,564 SQ. FT. HOME

The 1994-built log ranch home offers approximately 3,564 total square feet, 5 bedrooms, and 3 bathrooms (2 full, 1 half), with a full, finished basement for hosting or entertaining.



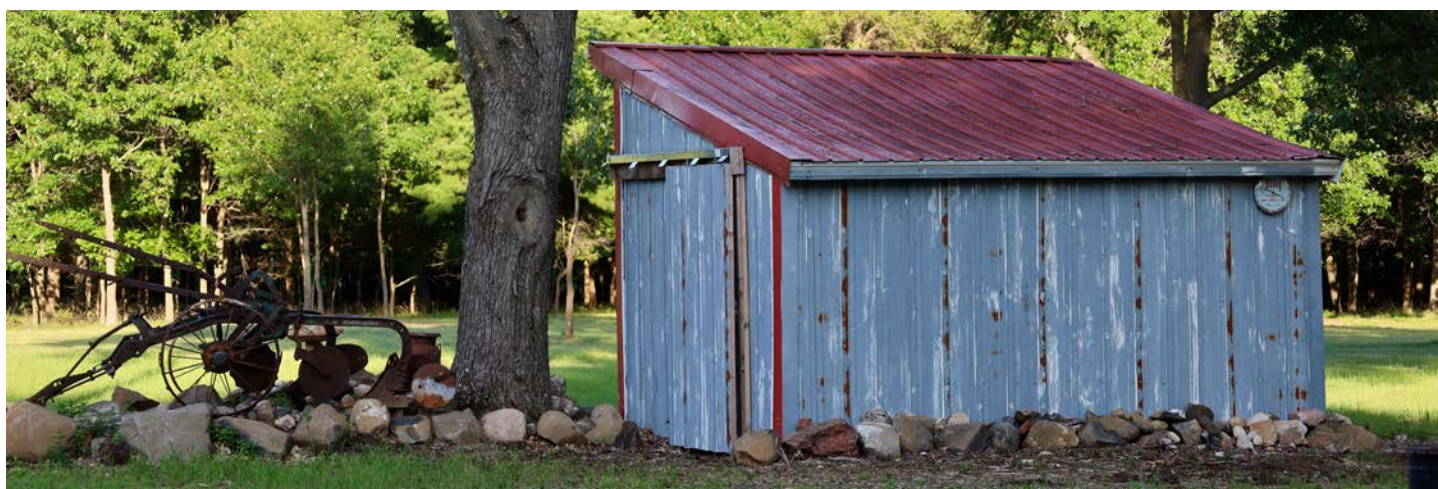
ADDITIONAL INTERIOR PHOTOS



2 LARGE BARN



3 STORAGE SHEDS

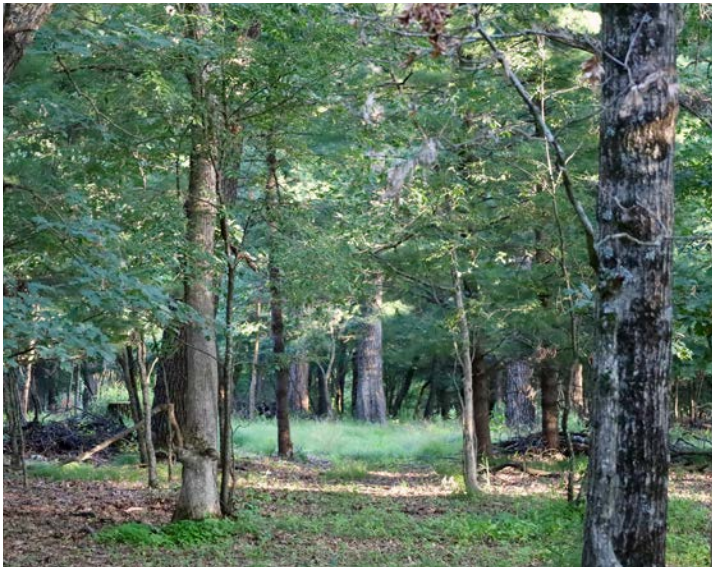


34.02 +/- ACRES

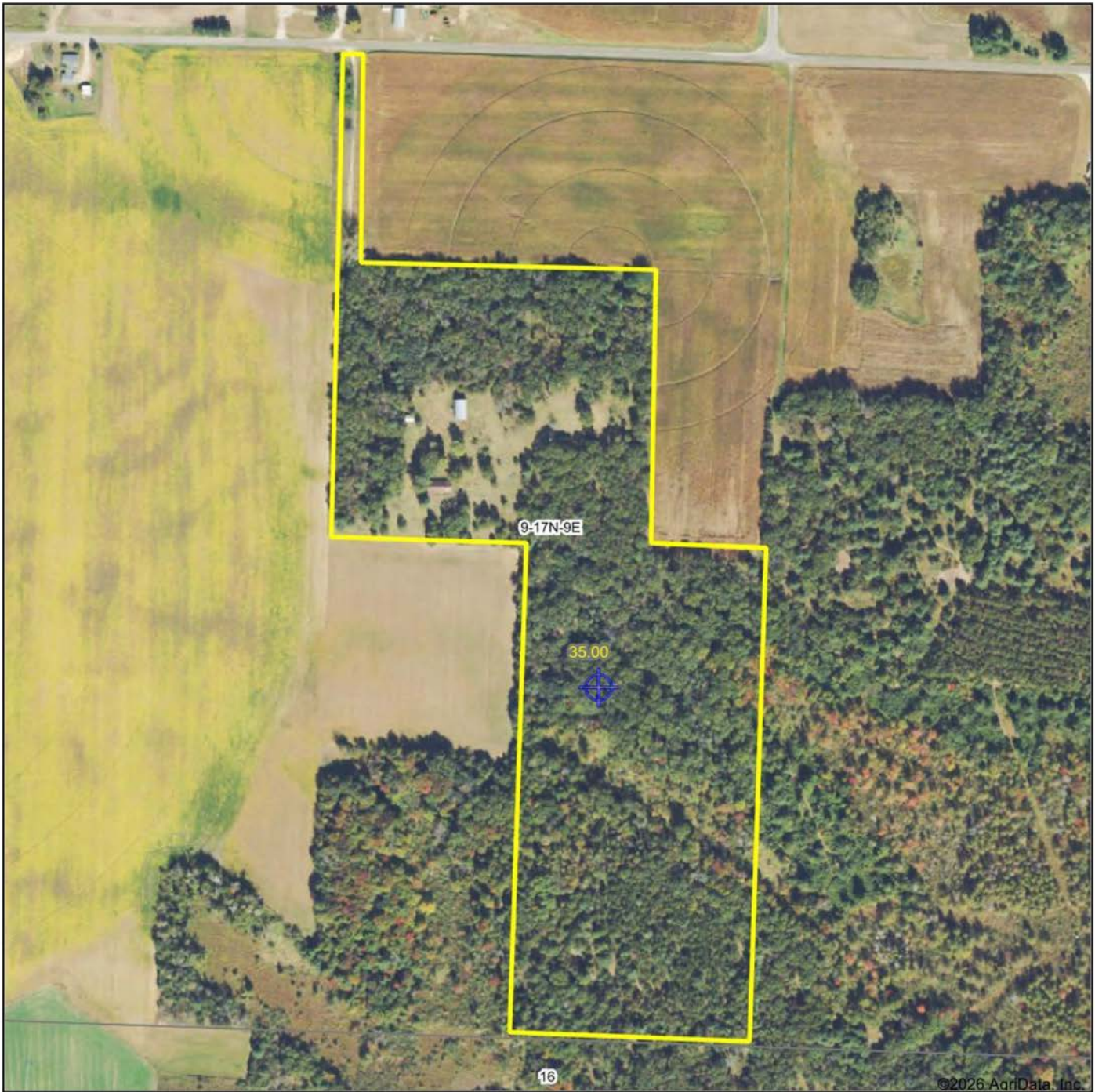
A great fit for the outdoorsman who wants room to hunt and explore — or anyone ready to trade the city for open Wisconsin country roads.



ADDITIONAL PHOTOS



AERIAL MAP



©2026 AgriData, Inc.

Map Center: 43° 57' 21.05, -89° 26' 16.6

0ft 418ft 836ft



Maps Provided By:



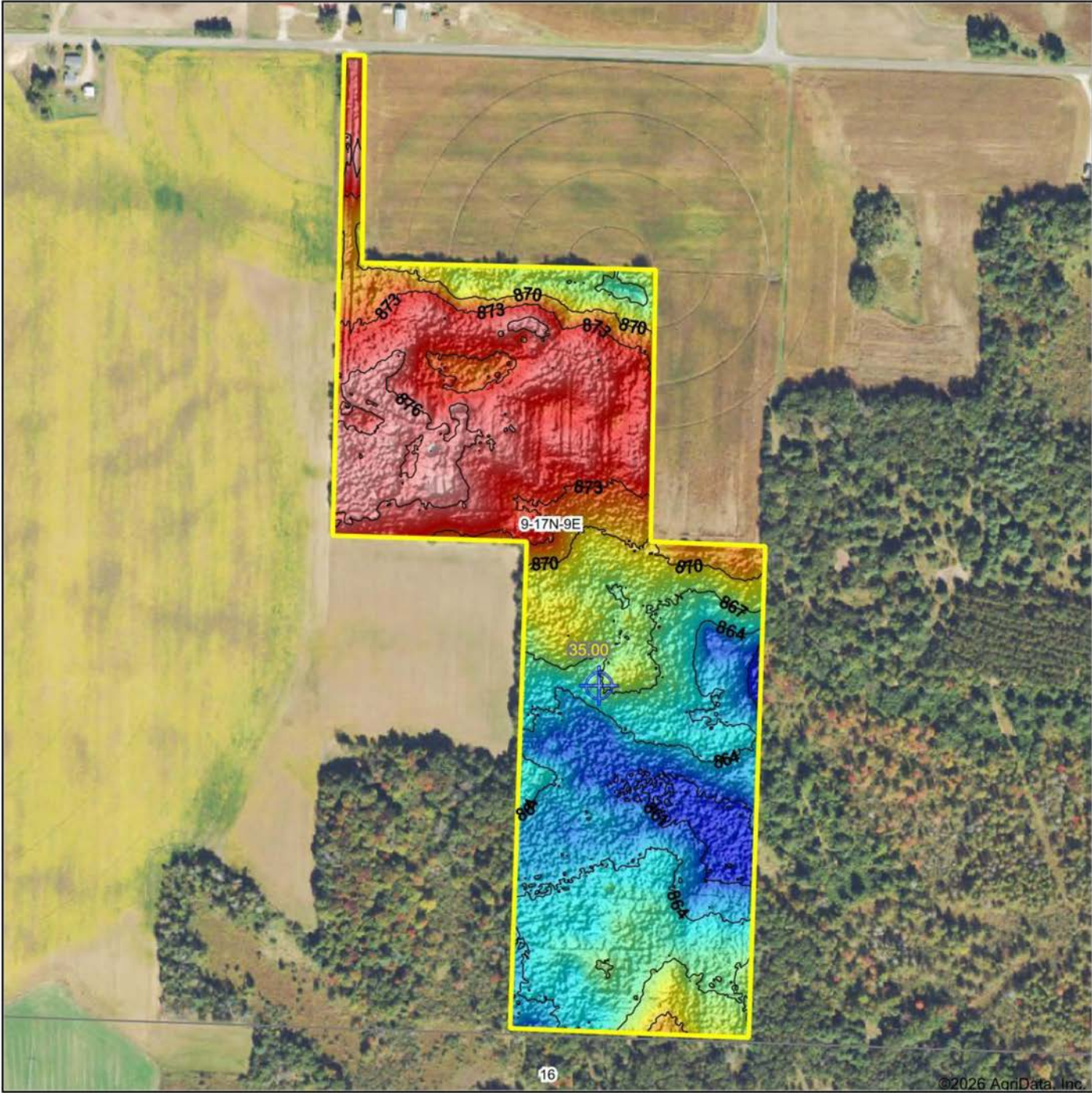
CUSTOMIZED ONLINE MAPPING
© AgriData, Inc. 2025 www.AgrDataInc.com

9-17N-9E
Marquette County
Wisconsin



1/4/2026

HILLSHADE MAP



Low Elevation High



Maps Provided By:



© AgriData, Inc. 2025 www.AgridataInc.com

Source: USGS 1 meter dem

Interval(ft): 3

Min: 860.0

Max: 878.5

Range: 18.5

Average: 868.9

Standard Deviation: 5.02 ft

0ft 421ft 842ft

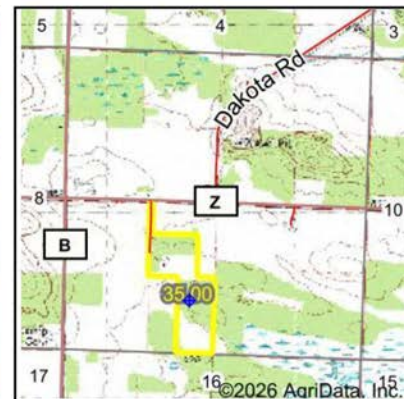
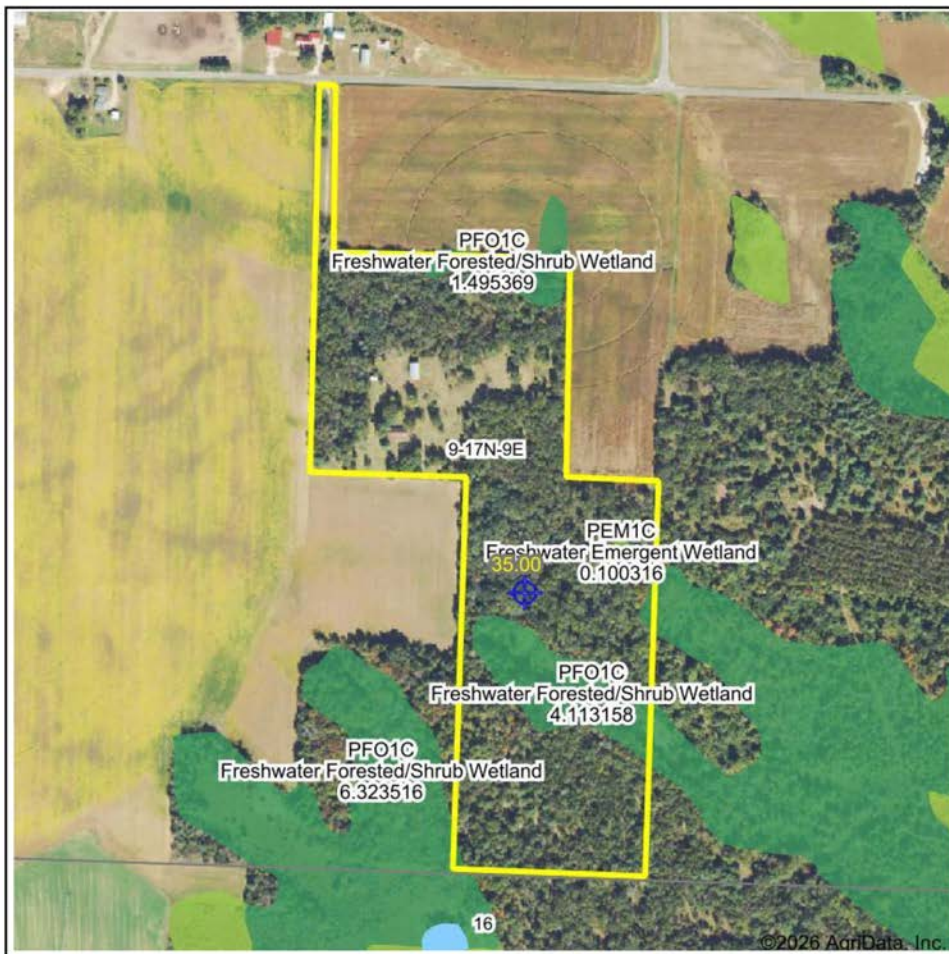


1/4/2026

9-17N-9E
Marquette County
Wisconsin

Boundary Center: 43° 57' 21.05, -89° 26' 16.6

WETLANDS MAP



State: **Wisconsin**
 Location: **9-17N-9E**
 County: **Marquette**
 Township: **Newton**
 Date: **1/4/2026**



Maps Provided By:



© AgriData, Inc. 2025 www.AgriDataInc.com

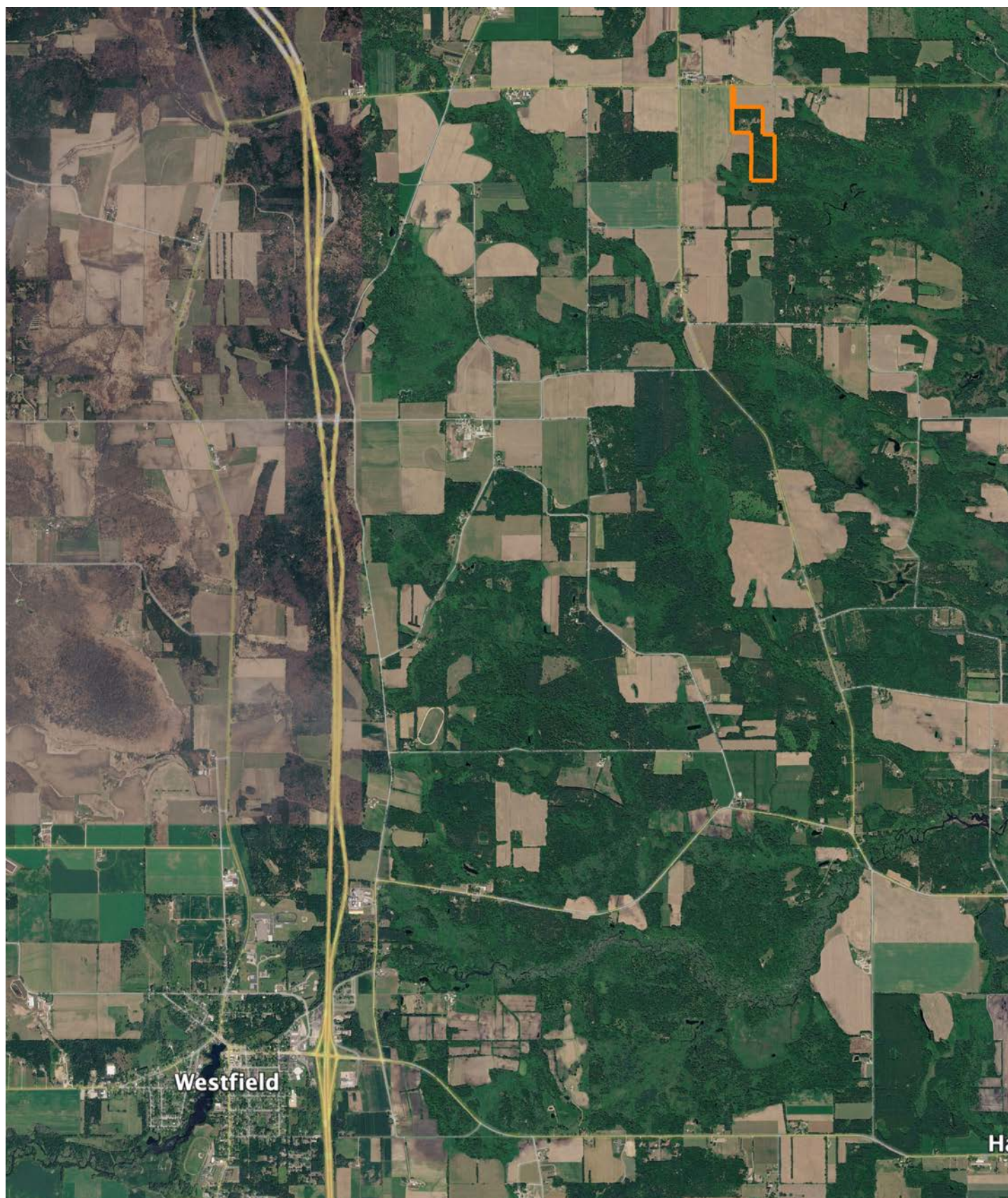


0ft 656ft 1313ft

Classification Code	Type	Acres
PFO1C	Freshwater Forested/Shrub Wetland	4.22
PFO1/4Bg	Freshwater Forested/Shrub Wetland	0.13
PEM1C	Freshwater Emergent Wetland	0.10
	Total Acres	4.45

Data Source: National Wetlands Inventory website. U.S. DoI, Fish and Wildlife Service, Washington, D.C. <http://www.fws.gov/wetlands/>

OVERVIEW MAP



AGENT CONTACT

Jordan is a dedicated, hard-working land agent passionate about helping clients navigate the land market in Southern Wisconsin. Growing up in Waukesha County, Jordan has a deep appreciation for the area's unique charm and potential. Ever since he could put on his own boots, Jordan has been hunting and helping manage his family farms in Grant and Crawford counties to produce year after year. Traveling across the different landscapes across the state has allowed him to appreciate all of the landscapes and markets the state has to offer.

Graduating from Marquette University with his Master's in Management and playing 5 years of Division I lacrosse has instilled the importance of teamwork into his approach to the real estate business. After spending 2 years at the Midwest Land Group office helping over 100 agents across 13 states build their businesses, he is ready to get back to supporting the state that holds such a large place in his heart. Being a part of hundreds of transactions through the home office gave Jordan a deep accountability in the fact that all parties involved in a transaction must fully own their roles for the best outcome possible and is never afraid to go above and beyond for his clients to ensure they achieve their goals.

In his spare time, Jordan enjoys spending time with his wife Elaina. They enjoy diving deeper into their faith life through their local church and organizations such as Young Life and FCA. When he isn't spending time with his family, you'll likely find Jordan working out with his friends or spending some time out on the open water fishing. If you're in the market for recreational, farmland, or investment properties in Wisconsin, be sure to give Jordan a call!



JORDAN SCHMID

LAND AGENT

262.737.8823

JordanSchmid@MidwestLandGroup.com



MidwestLandGroup.com

This property is being offered by Midwest Land Group, LLC. 913.674.8010. All information provided by Midwest Land Group, LLC or their agents was acquired from sources deemed accurate and reliable, however we do not warrant its accuracy or completeness. Midwest Land Group, LLC assumes no liability for error, omission or investment results. Midwest Land Group, LLC. Licensed in Alabama, Arkansas, Illinois, Indiana, Iowa, Kansas, Kentucky, Louisiana, Minnesota, Mississippi, Missouri, Montana, Nebraska, North Dakota, Ohio, Oklahoma, South Dakota, Tennessee, Texas, Wisconsin, and Wyoming.