

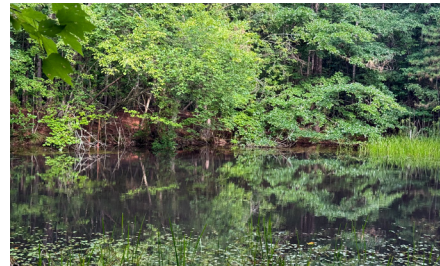
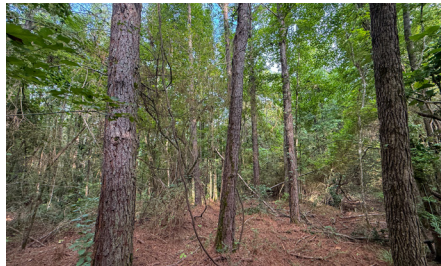
LAND FOR SALE

108 +/- ACRES WITH DUAL ROAD FRONTAGE & ENDLESS POTENTIAL



PROPERTY FEATURES

- Mixed hardwood and pine timber
- Excellent deer and turkey hunting
- Multiple homesite locations
- Road frontage with dual access
- Flowing branch
- Existing pond
- Additional pond/lake site potential
- Rolling topography
- Private setting
- Power and water available



For more information, contact:

CHAD WHEELER, Land Agent

205.431.3767 | CWheeler@MidwestLandGroup.com



COUNTY: **MARION**

STATE: **ALABAMA**

ACRES: **108**



MidwestLandGroup.com BUYERS, SELLERS, AND LAND – CONNECTED

This property is being offered by Midwest Land Group, LLC, 7111 W. 151st Street, Ste. 27, Overland Park, KS 66223, 913.674.8010. Licensed in AL, AR, IA, IL, IN, KS, KY, LA, MN, MO, MS, MT, ND, NE, OH, OK, SD, TN, TX, WI, and WY.