

MIDWEST LAND GROUP PRESENTS

5 ACRES IN

LEAVENWORTH COUNTY KANSAS



MidwestLandGroup.com

MIDWEST LAND GROUP IS HONORED TO PRESENT

PEACEFUL COUNTRY LIVING ON 5 +/- ACRES WITH TWO MORTON BUILDINGS

If you're looking for privacy without sacrificing convenience, this property offers the best of both worlds. Nestled on approximately 5 +/- acres, you'll enjoy a secluded setting surrounded by mature trees while remaining just a short drive from everyday amenities.

This spacious ranch-style home features an open floor plan with 3 bedrooms, 2 full bathrooms, and an additional flex room that could serve as a non-conforming 4th bedroom, home office, playroom, or hobby space.

The primary suite includes a walk-in closet and a relaxing whirlpool tub. The thoughtfully designed kitchen opens to a large family room with a cozy fireplace, creating an

inviting space for everyday living and entertaining. A full unfinished basement provides endless opportunities to expand your living space, add additional bedrooms, a recreation room, or customize it to fit your needs.

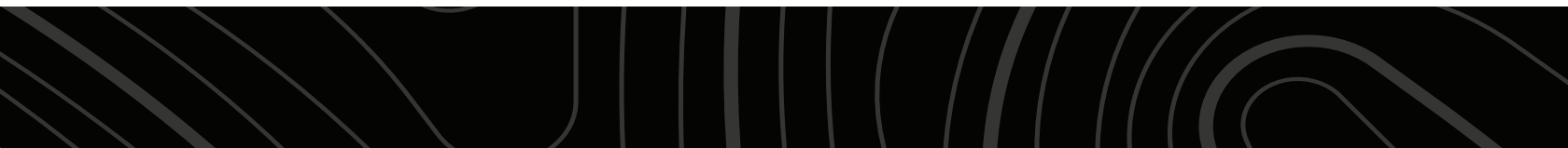
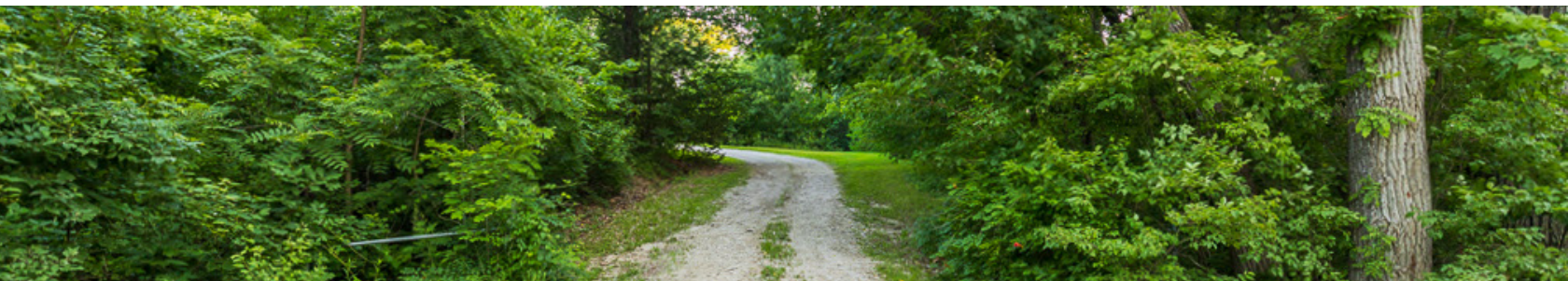
The land and outbuildings are amazing. The acreage offers an exceptional blend of mature trees for privacy and open areas for recreation, gardening, or hobby farming. A new survey is currently in process, and the new water well is getting installed.

Whether you're looking for room to grow, space for your hobbies, or simply a quiet place to call home, this unique property is ready to welcome you.

PROPERTY FEATURES

COUNTY: **LEAVENWORTH** | STATE: **KANSAS** | ACRES: **5**

- 5 +/- acres with beautiful trees and privacy
- 3 bedroom, 2 bathroom home with open floor plan
- 24'x54' Morton building with 2-car garage
- 24'x36' Morton building/shop with pull-through access
- Full unfinished walk-up basement
- New water well
- Covered front porch and spacious back deck to enjoy both sunrises and sunsets
- Plenty of room for gardens, animals, or hobby farming
- Located in the Basehor-Linwood school district
- Great location close to De Soto, Lawrence, Eudora & Leavenworth



OPEN-CONCEPT HOME

This spacious ranch-style home features an open floor plan with 3 bedrooms, 2 full bathrooms, and an additional flex room that could serve as a non-conforming 4th bedroom, home office, playroom, or hobby space.



COVERED PORCH & BACK DECK

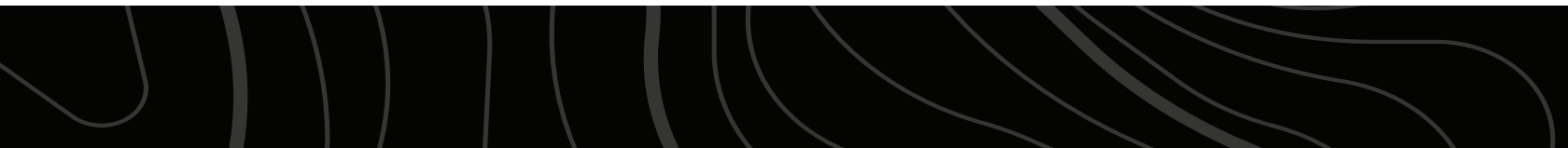
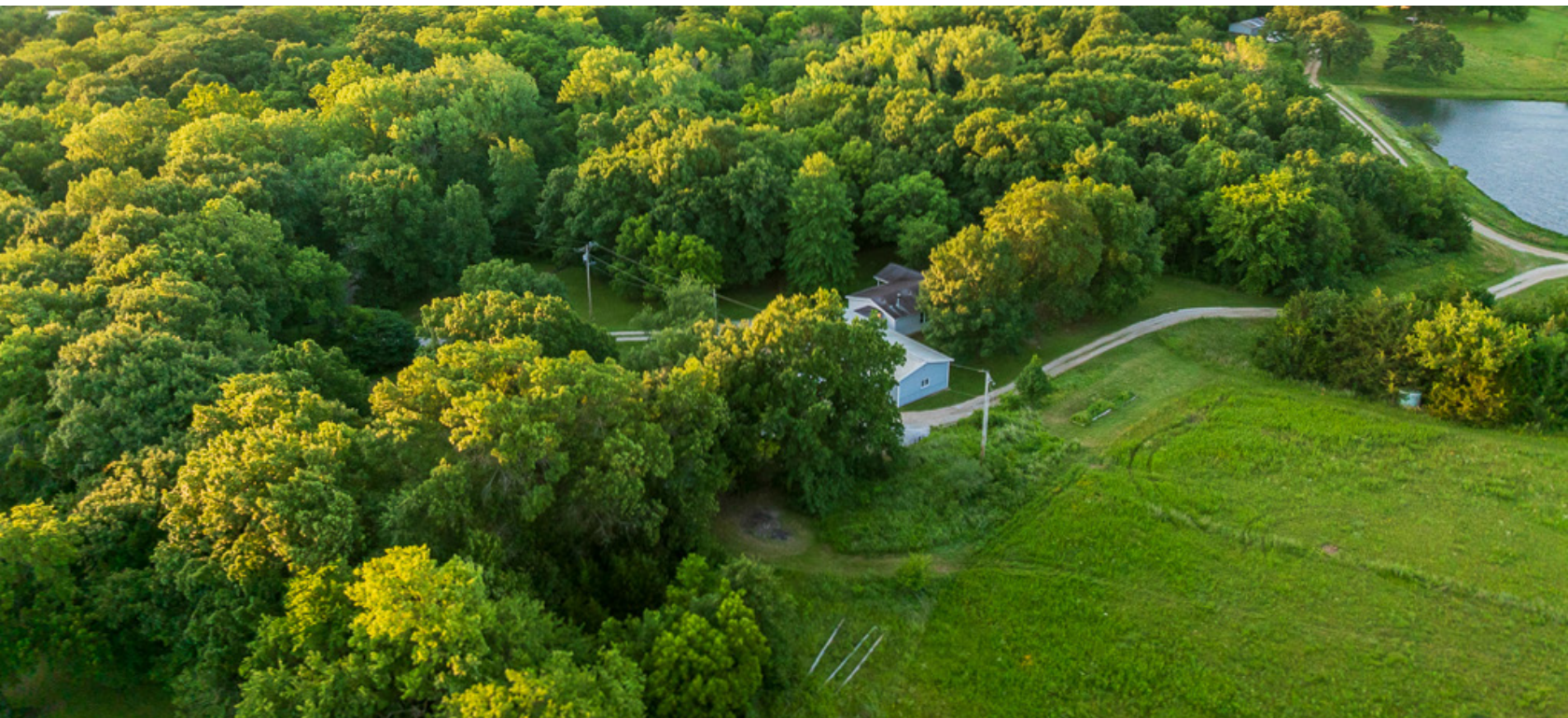


2 MORTON BUILDINGS



BEAUTIFUL TREES AND PRIVACY

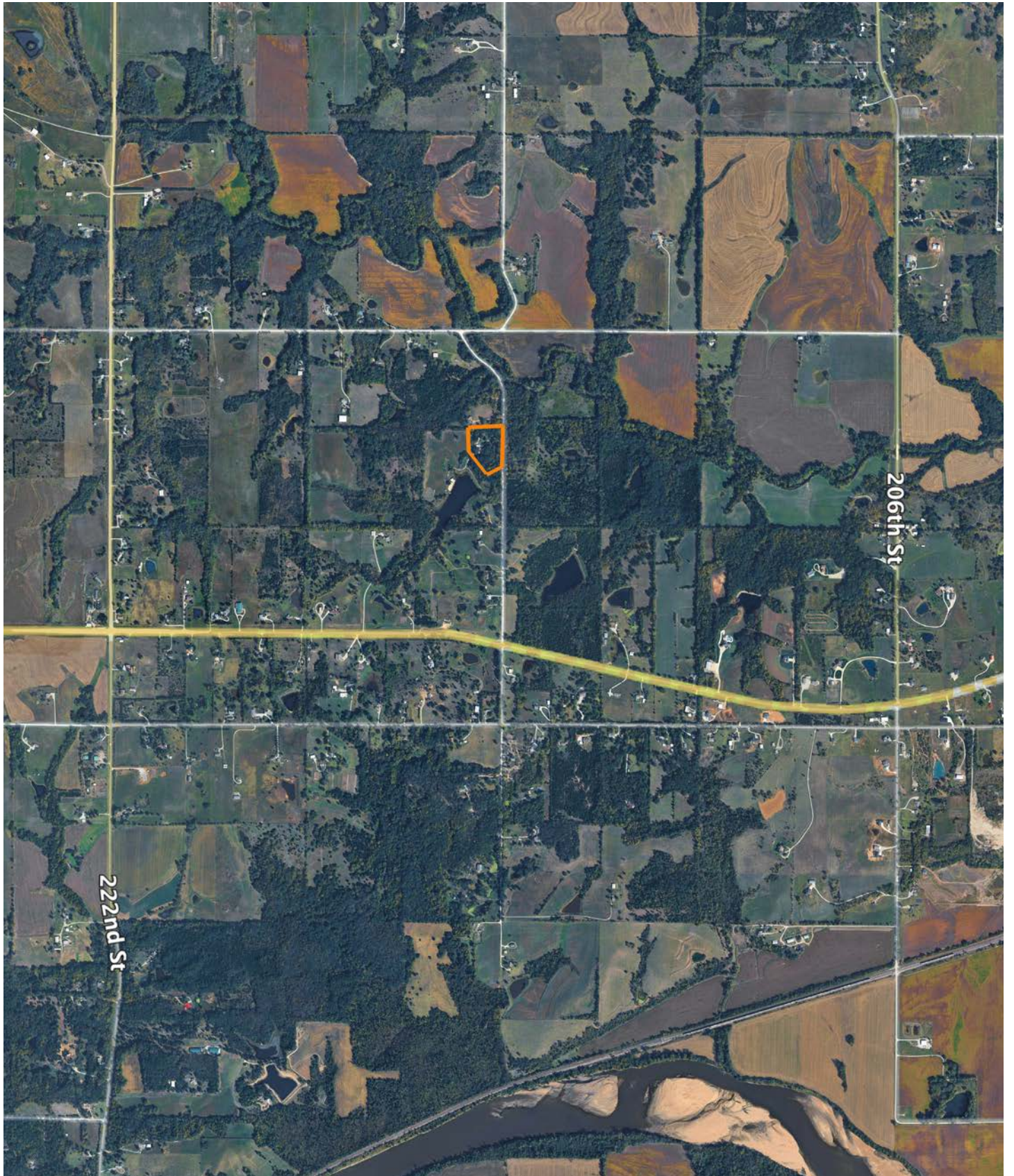
If you're looking for privacy without sacrificing convenience, this property offers the best of both worlds. Nestled on approximately 5 +/- acres, you'll enjoy a secluded setting surrounded by mature trees while remaining just a short drive from everyday amenities.



AERIAL MAP



OVERVIEW MAP



AGENT CONTACT

Donnie Thomas grew up an avid outdoorsman, learning how to hunt and fish early on from his father on their farm in Garnett, KS. This led to his passion for farms and property, and the possibilities that lie within to improve the land for wildlife. Born in Oswego, KS, Donnie attended high school in Olathe and graduated from Emporia State University with a Business degree in Marketing and Management. Before getting into real estate, he co-owned a large, regional, medical equipment company with his brother, at which he developed a deep appreciation for service and how it can make all the difference in a client relationship.

Today, Donnie uses that experience at Midwest Land Group to help others buy and sell land. His background as an outdoorsman, as well as owning and managing a farm, lends itself well to the land real estate industry. In addition to hunting, fishing, shooting, water sports, and travel, this proud Eagle Scout enjoys helping youth learn how to hunt, having organized several youth pheasant hunts. Donnie serves as a worship leader at Kahola Lake Church and is active at Grace Church, as well as the Fellowship of Christian Athletes Outdoors. Donnie and his wife Kristina, along with their three sons, use their passion for the outdoors to make their family farm in LaCygne an outdoor retreat and an escape from the city.



DONNIE THOMAS, LAND AGENT
913.396.6245
DThomas@MidwestLandGroup.com



MidwestLandGroup.com

This property is being offered by Midwest Land Group, LLC. 913.674.8010. All information provided by Midwest Land Group, LLC or their agents was acquired from sources deemed accurate and reliable, however we do not warrant its accuracy or completeness. Midwest Land Group, LLC assumes no liability for error, omission or investment results. Midwest Land Group, LLC. Licensed in Alabama, Arkansas, Illinois, Indiana, Iowa, Kansas, Kentucky, Louisiana, Minnesota, Mississippi, Missouri, Montana, Nebraska, North Dakota, Ohio, Oklahoma, South Dakota, Tennessee, Texas, Wisconsin, and Wyoming.