

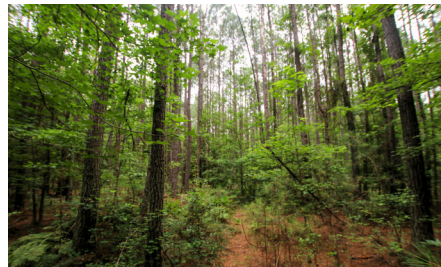
LAND FOR SALE

40 +/- ACRE RECREATIONAL OR TIMBER INVESTMENT TRACT



PROPERTY FEATURES

- Marketable pine timber
- Deeded easement access
- Small pond
- Great deer & turkey hunting
- Mostly flat topography
- Some mast-producing hardwoods
- 2 miles to Malvern
- 16 miles to Benton



COUNTY: **HOT SPRING**

STATE: **ARKANSAS**

ACRES: **40**

For more information, contact:

CALYN ZACHARY, Land Agent

501.483.5007 | CZachary@MidwestLandGroup.com

MidwestLandGroup.com BUYERS, SELLERS, AND LAND – CONNECTED

This property is being offered by Midwest Land Group, LLC, 7111 W. 151st Street, Ste. 27, Overland Park, KS 66223, 913.674.8010.
Licensed in AL, AR, IA, IL, IN, KS, KY, LA, MN, MO, MS, MT, ND, NE, OH, OK, SD, TN, TX, WI, and WY.

