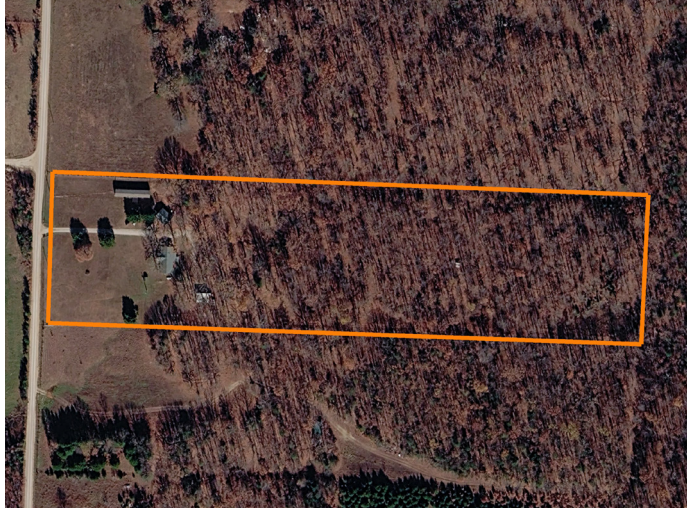


LAND FOR SALE

10 +/- ACRES WITH TWO RESIDENCES IN THE SKYLINE SCHOOL DISTRICT



PROPERTY FEATURES

- Ideal setup for multi-generational living
- Rental income potential with two separate residences
- 2021 Pitts mobile home on a permanent foundation
- 2004 double-wide with newer metal roof, newer siding, and fresh paint
- Approximately 50% open ground and 50% mature timber
- 25'x30' shop with concrete floors and electricity



COUNTY: **DALLAS**

STATE: **MISSOURI**

ACRES: **80**



For more information, contact:

AMBER MILLER, Land Agent

417.322.6995 | AMiller@MidwestLandGroup.com

MidwestLandGroup.com BUYERS, SELLERS, AND LAND – CONNECTED

This property is being offered by Midwest Land Group, LLC, 7111 W. 151st Street, Ste. 27, Overland Park, KS 66223, 913.674.8010.
Licensed in AL, AR, IA, IL, IN, KS, KY, LA, MN, MO, MS, MT, ND, NE, OH, OK, SD, TN, TX, WI, and WY.

