

MIDWEST LAND GROUP PRESENTS

20 ACRES IN

---

# CASS COUNTY MISSOURI



[MidwestLandGroup.com](http://MidwestLandGroup.com)

MIDWEST LAND GROUP IS HONORED TO PRESENT

# 20 +/- ACRE BUILD SITE OR DEVELOPMENT OPPORTUNITY IN BELTON

This property is a must-see if you are looking to build a dream home or development close to Belton and the greater Kansas City area. The land is conveniently located under two miles from the heart of Belton and has blacktop road access. Talk about a great location!

This amazing land offers a little bit of everything. The property lays out nicely with gently rolling topography and mainly consists of great pasture ground. It is fully fenced and has a small wildlife/livestock pond. Bring on

the cattle or horses and make this your very own hobby farm. A nice tree line offers shade along with a small creek drainage that provides seclusion at the north end of the parcel. About 400 feet off the blacktop road frontage, you will fall in love with the perfect home build site with amazing views overlooking the property!

Opportunities at acreage this close to Belton are rare. Contact Skyler Wirsig at (816) 500-0168 for more information or to schedule a showing.

## PROPERTY FEATURES

COUNTY: **CASS** | STATE: **MISSOURI** | ACRES: **20**

- Blacktop road frontage
- Great pasture
- Gently rolling topography
- Amazing views
- Picturesque build site
- Fully fenced
- Wildlife/livestock pond
- Thick tree line offering shade and seclusion
- Small creek drainage
- Development potential
- Belton School District
- Under 2 miles south of Belton
- Under 4 miles to Kansas state line
- 25 minutes to Lee's Summit
- 30 minutes to Overland Park
- Under 1 hour to Kansas City airport



# BLACKTOP ROAD FRONTAGE

---



# PICTURESQUE BUILD SITE

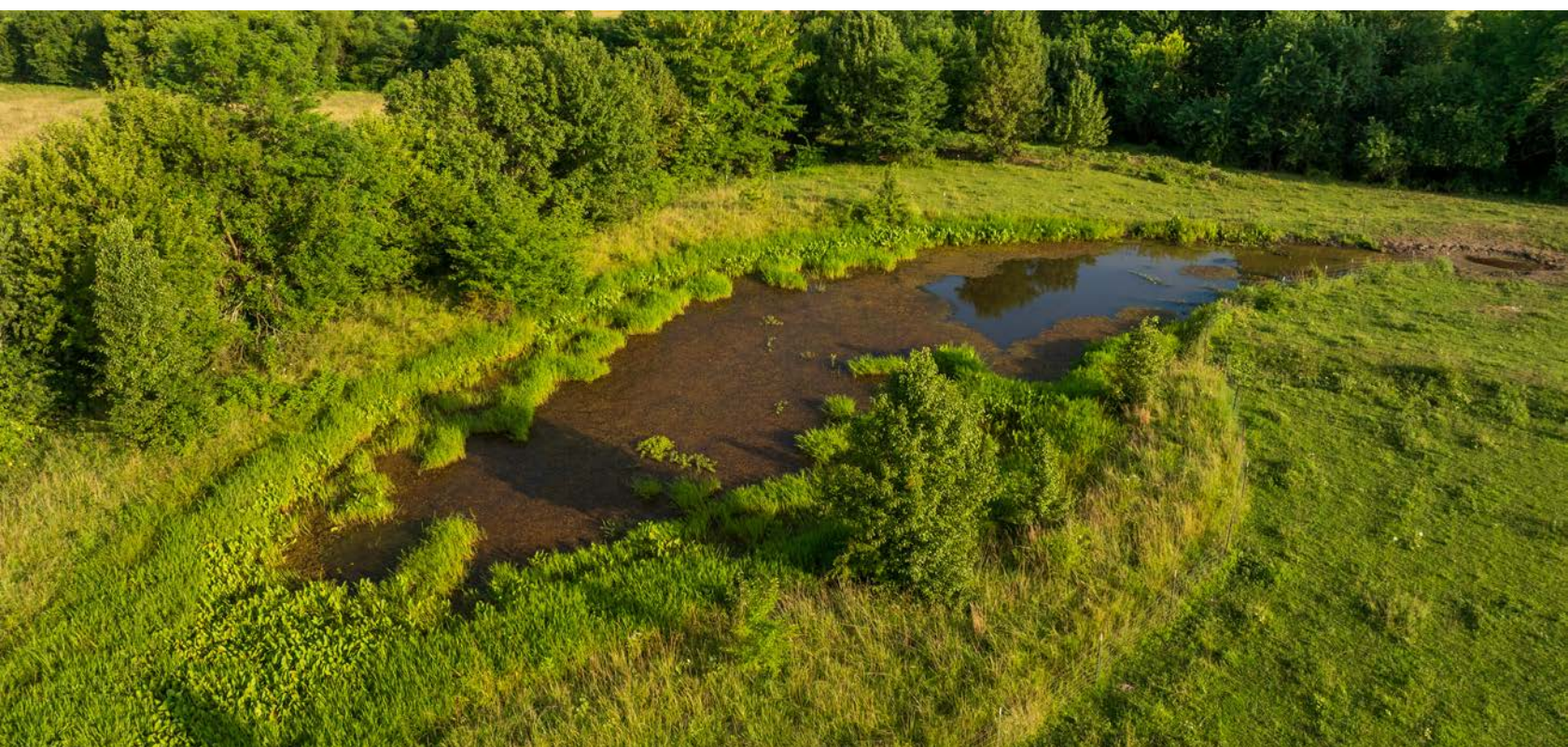
---



# PASTURE & WILDLIFE/LIVESTOCK POND

---

This amazing land offers a little bit of everything. The property lays out nicely with gently rolling topography and mainly consists of great pasture ground. It is fully fenced and has a small wildlife/livestock pond.

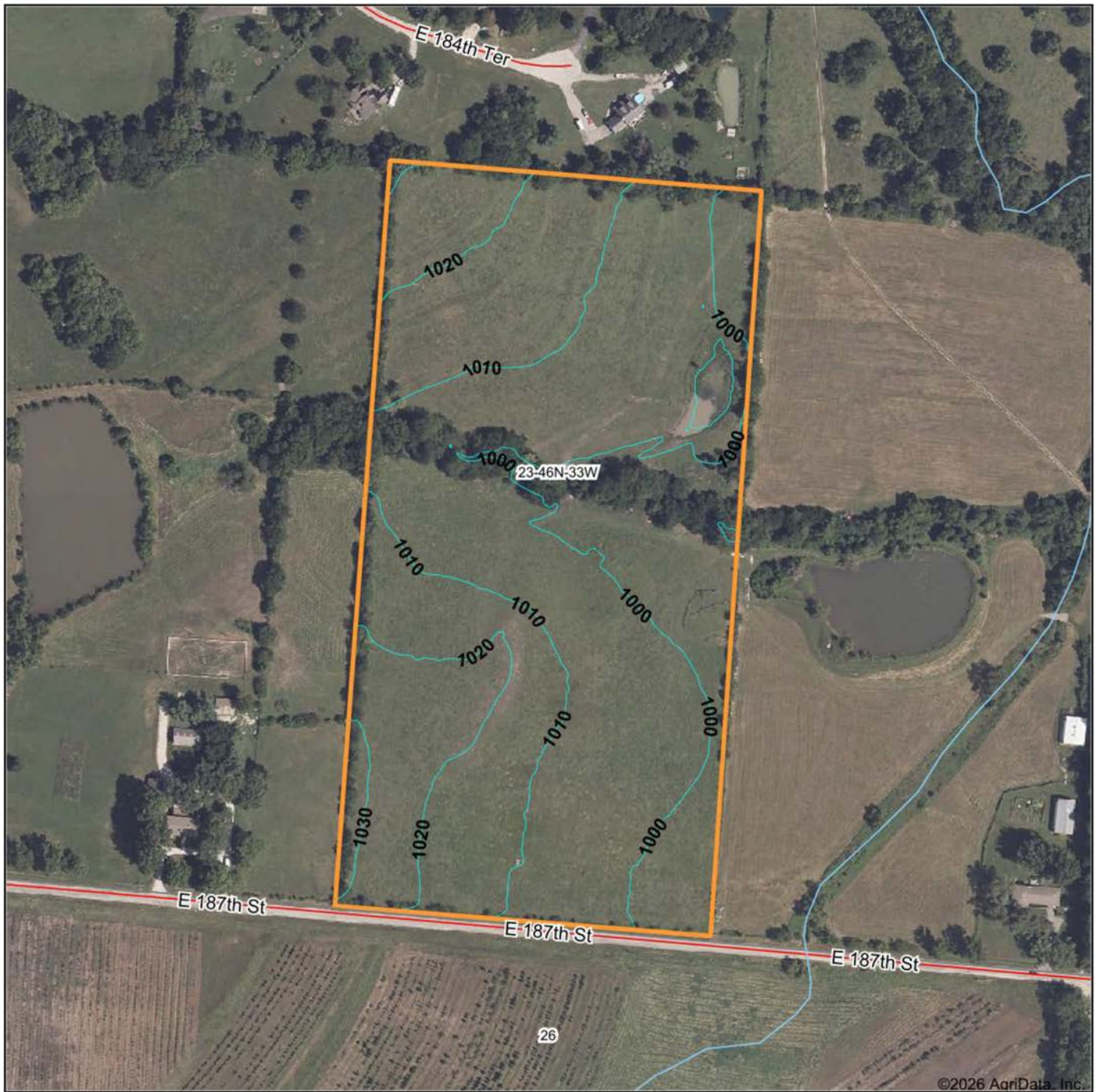


# ADDITIONAL PHOTOS

---



# TOPOGRAPHY MAP



©2026 AgriData, Inc.



Maps Provided By:  
**surety**  
CUSTOMIZED ONLINE MAPPING  
© AgriData, Inc. 2025 www.AgriDataInc.com

Source: USGS 1 meter dem  
Interval(ft): 10.0  
Min: 989.4  
Max: 1,034.2  
Range: 44.8  
Average: 1,008.7  
Standard Deviation: 9.22 ft

0ft 272ft 544ft

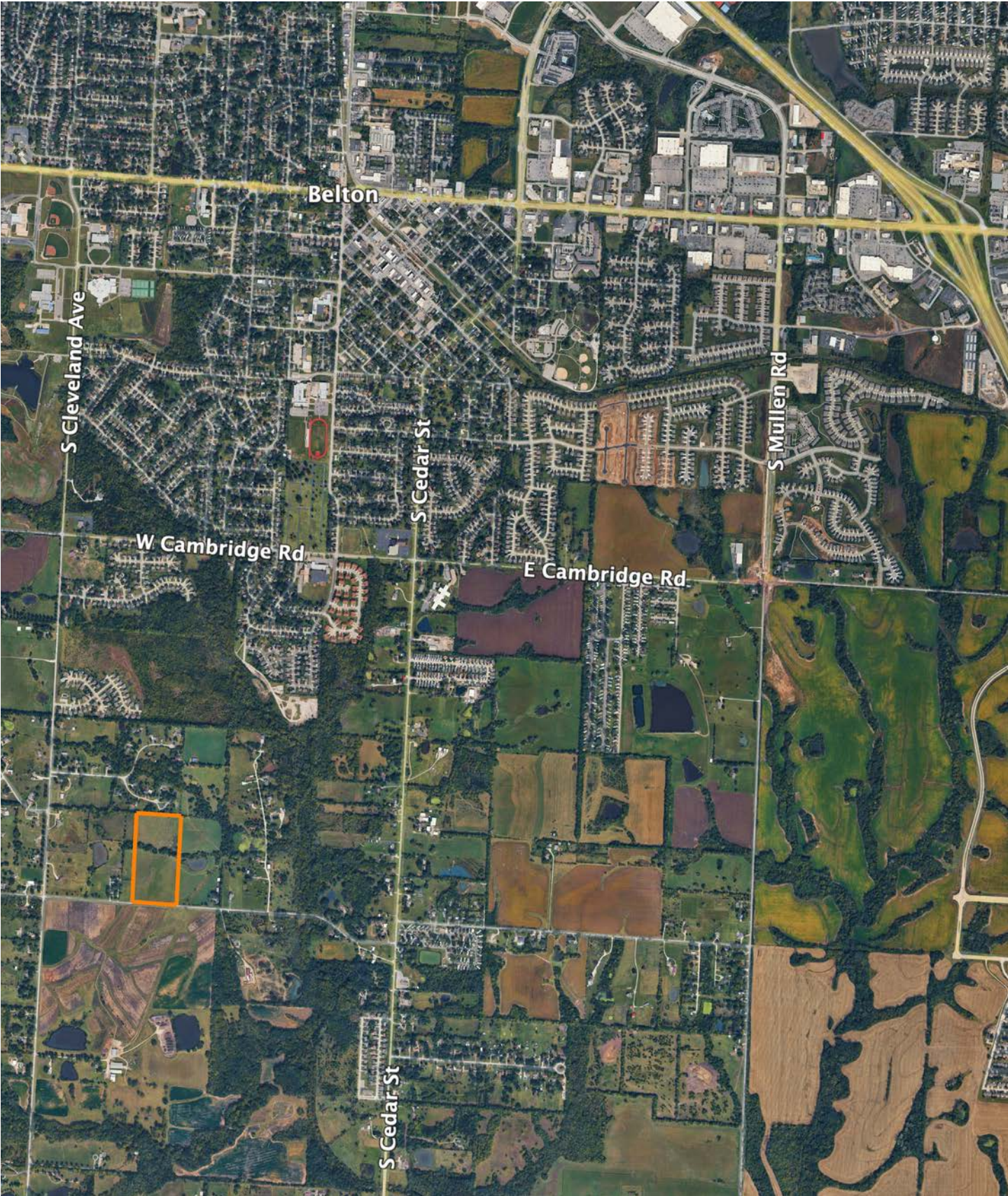


7/8/2026

**23-46N-33W**  
**Cass County**  
**Missouri**

Boundary Center: 38° 47' 16.56, -94° 32' 40.34

# OVERVIEW MAP



# AGENT CONTACT

Skyler Wirsig is a seasoned steward of the land with a firm focus on developing and managing agricultural properties. Over 15 years, he has gained invaluable experience filming and hunting for the Outdoor Channel's Heartland Bowhunter, which has earned several accolades under his watch.

Hailing from Kansas City, Missouri, Skyler graduated from William Jewell College with degrees in Business Administration and Critical Thought & Inquiry. His previous role as an operations manager, handling sales and customer relationships across 20 countries, enhances his effectiveness as a real estate agent.

A dedicated sportsman, Skyler proudly holds the Archery Missouri State Record for an 8-point whitetail. Despite his professional accomplishments, he remains approachable, enjoying fishing, sports, and travel with his family. Skyler also volunteers for the Wounded Warriors in Action Foundation. Residing on his farm in Grain Valley, Missouri, with his wife and sons, Skyler brings a wealth of expertise and a down-to-earth attitude to land sales in the Midwest.



**SKYLER WIRSIG**

LAND AGENT

**816.500.0168**

[SWirsig@MidwestLandGroup.com](mailto:SWirsig@MidwestLandGroup.com)



**MidwestLandGroup.com**

This property is being offered by Midwest Land Group, LLC. 913.674.8010. All information provided by Midwest Land Group, LLC or their agents was acquired from sources deemed accurate and reliable, however we do not warrant its accuracy or completeness. Midwest Land Group, LLC assumes no liability for error, omission or investment results. Midwest Land Group, LLC. Licensed in Alabama, Arkansas, Illinois, Indiana, Iowa, Kansas, Kentucky, Louisiana, Minnesota, Mississippi, Missouri, Montana, Nebraska, North Dakota, Ohio, Oklahoma, South Dakota, Tennessee, Texas, Wisconsin, and Wyoming.