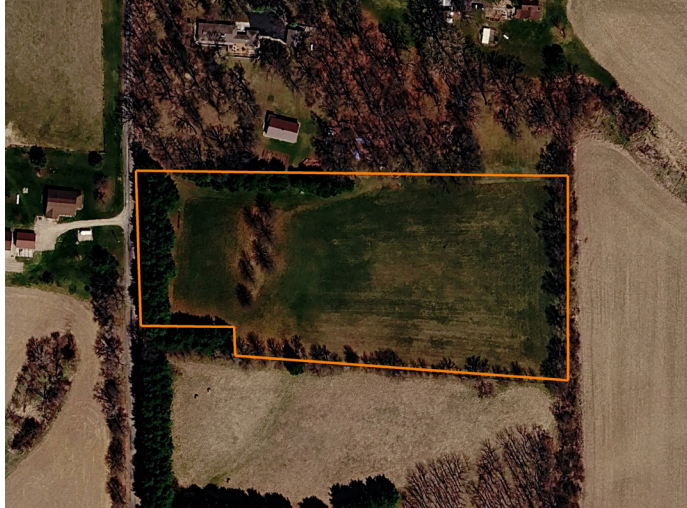


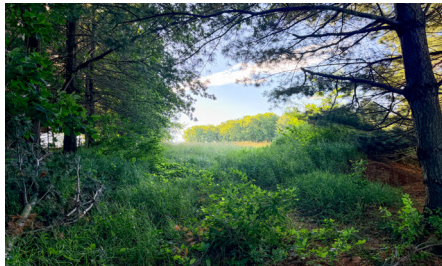
# LAND FOR SALE

## BUILD YOUR DREAM HOME: 5 +/- ROLLING ACRES JUST 5 MILES OUTSIDE KEWANEE



### PROPERTY FEATURES

- Acreage: 5 +/- pristine, buildable acres
- Terrain: gently rolling and partially cleared
- Utilities: electricity conveniently available right at the road
- Natural beauty: features several high-value, mature walnut trees
- Privacy: the entire property is enclosed by towering walnut, pine, and oak trees
- Sanctuary: beautiful setting cut into the walnut trees for a campfire or picnic
- Wildlife: numerous signs of deer, turkeys, and other wildlife



COUNTY: **STARK**

STATE: **ILLINOIS**

ACRES: **5**

For more information, contact:

**MICHAEL HAMMER**, Land Agent

815.310.5068 | MHammer@MidwestLandGroup.com

**MidwestLandGroup.com** BUYERS, SELLERS, AND LAND – CONNECTED

This property is being offered by Midwest Land Group, LLC, 7111 W. 151st Street, Ste. 27, Overland Park, KS 66223, 913.674.8010. Licensed in AL, AR, IA, IL, IN, KS, KY, LA, MN, MO, MS, MT, ND, NE, OH, OK, SD, TN, TX, WI, and WY.

