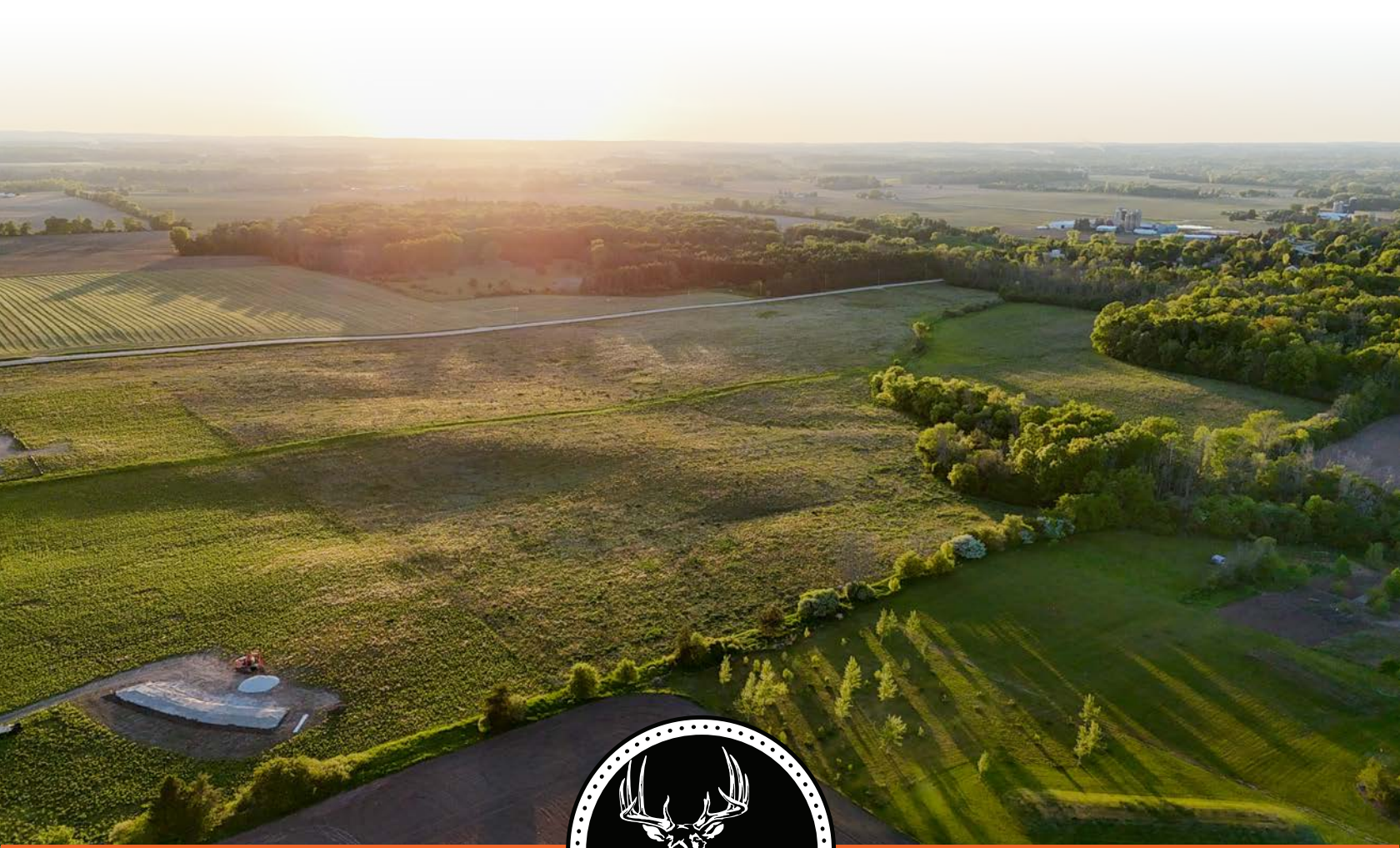


MIDWEST LAND GROUP PRESENTS

RANGELINE ESTATES

---

# SHEBOYGAN COUNTY WISCONSIN



[MidwestLandGroup.com](http://MidwestLandGroup.com)

MIDWEST LAND GROUP IS HONORED TO PRESENT

# RANGELINE ESTATES - PREMIER ACREAGE HOMESITES

Introducing Rangeline Estates, a rare opportunity to own an acreage homesite in the town of Sheboygan. This proposed rural development offers a limited collection of estate-sized parcels ranging from approximately 7.264 acres to 29.651 acres, providing the space, privacy, and flexibility that are increasingly difficult to find in today's market.

Situated along Rangeline Road, these thoughtfully designed homesites offer an ideal setting for custom home construction while maintaining a peaceful country atmosphere just minutes from Sheboygan amenities. Perc tests have already been completed, allowing buyers to move forward with confidence as they begin planning their future home.

A scenic creek winds through portions of the development, creating beautiful natural views and enhancing the character of these homesites. The combination of generous lot sizes, attractive natural features, and a desirable rural setting provides a great opportunity for those looking to build a custom home with room to spread out.

All lot sales are contingent upon final municipal approval. Contact the listing agent for availability, pricing, and additional development information.



# PROPERTY FEATURES

LOTS: **1-7** | COUNTY: **SHEBOYGAN** | STATE: **WISCONSIN** | TOTAL ACRES: **65.7**

- Estate-sized homesites
- Town of Sheboygan
- Scenic creek meanders through portions of the development
- Rare opportunity to own acreage in an area dominated by smaller residential lots
- Rolling countryside setting with beautiful rural views
- Plenty of space for custom homes, detached buildings, and outdoor living areas
- Convenient access to Sheboygan, Kohler, and Lake Michigan attractions
- Minutes from shopping, dining, healthcare, and everyday amenities
- Privacy of country living without sacrificing convenience
- Limited offering of thoughtfully designed homesites in a premier location

## LOTS 1, 2, & 3

ACRES: **29.651**

## LOT 5

ACRES: **7.264**

## LOT 7

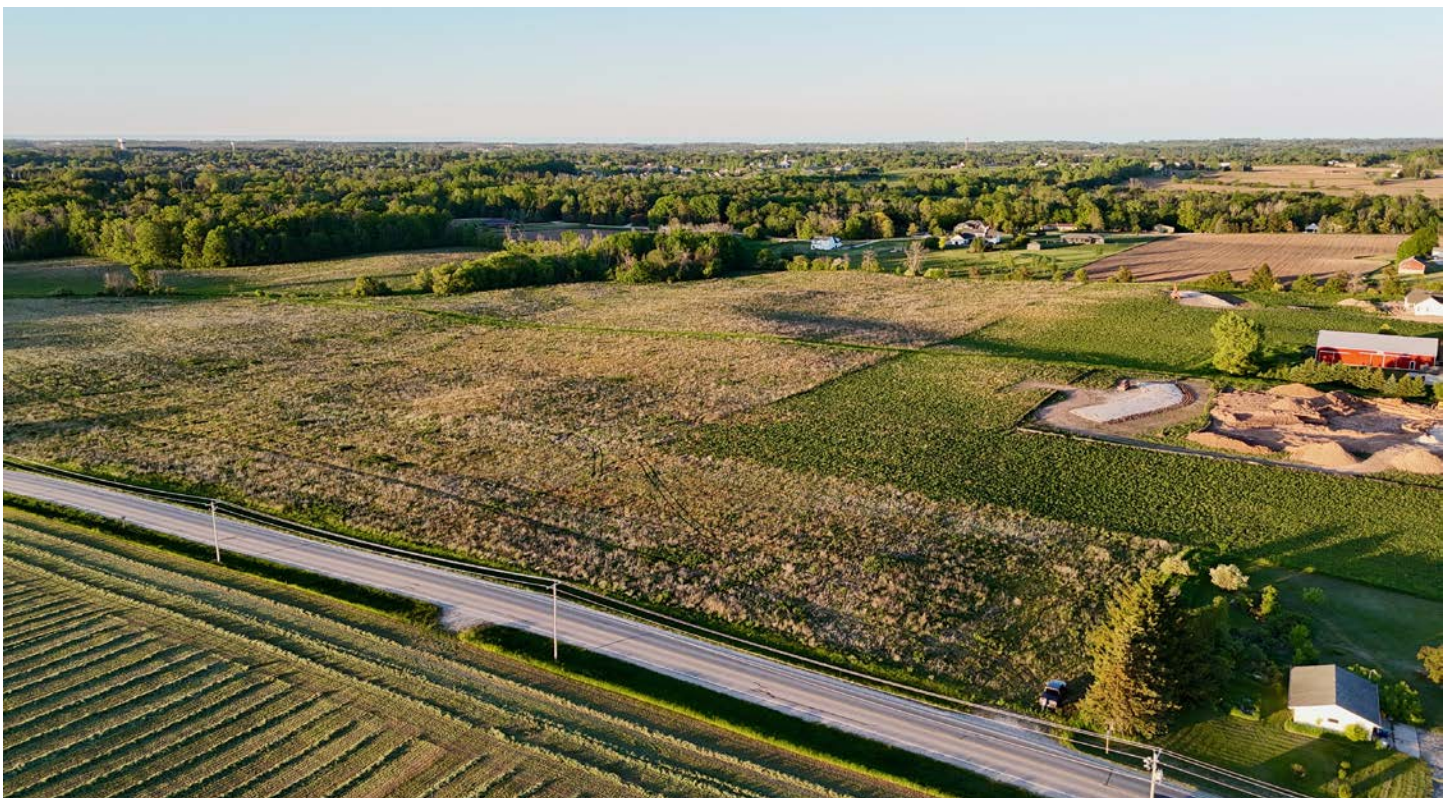
ACRES: **10.706**

## LOT 4

ACRES: **9.003**

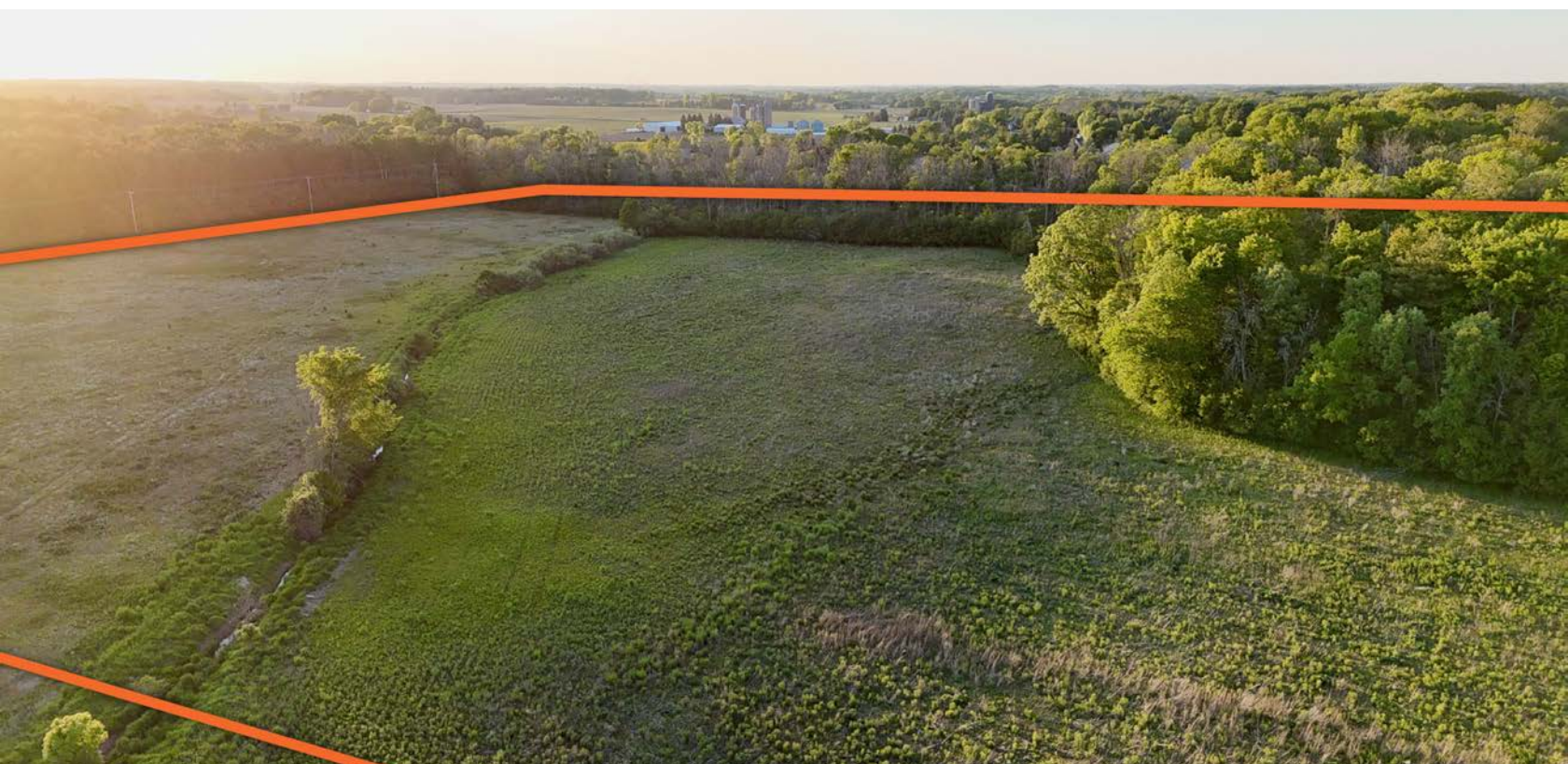
## LOT 6

ACRES: **7.27**



# LOTS 1, 2, & 3 - 29.651 ACRES

---



# LOT 4 - 9.003 ACRES

---



## LOT 5 - 7.264 ACRES

---



## LOT 6 - 7.27 ACRES

---



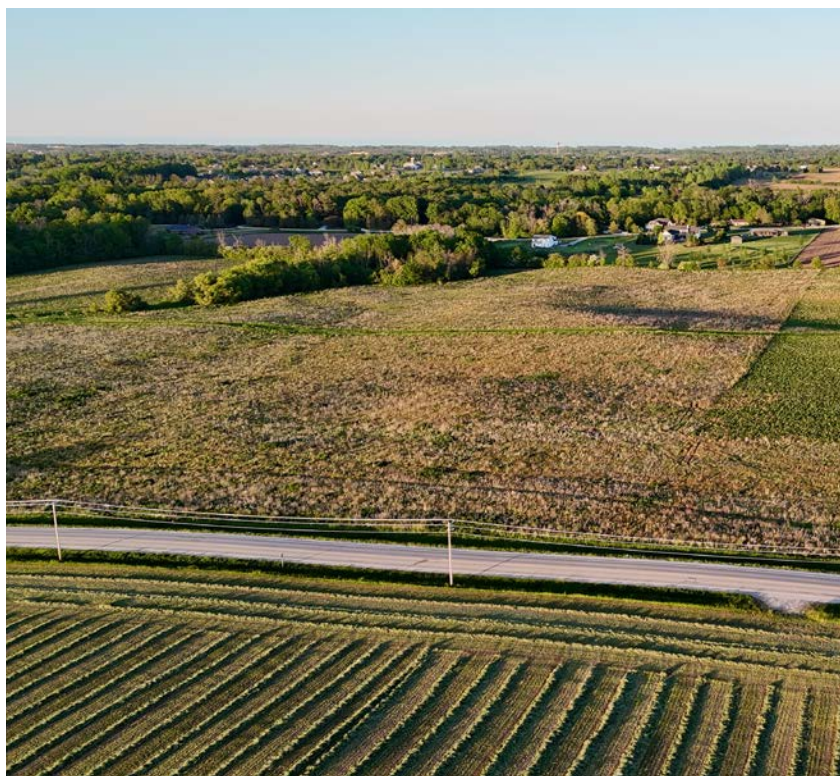
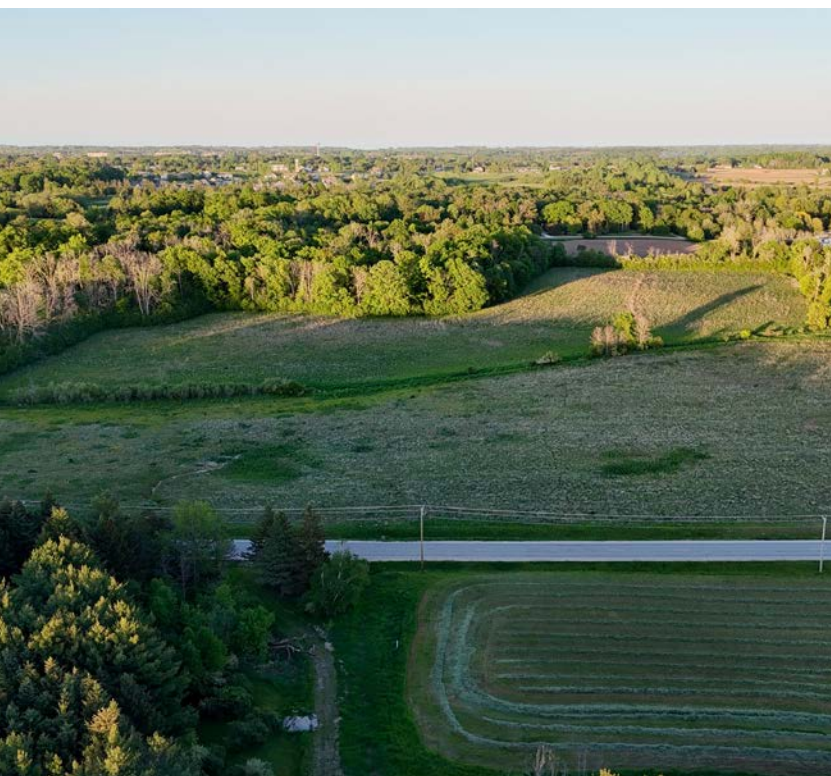
## LOT 7 - 10.706 ACRES

---



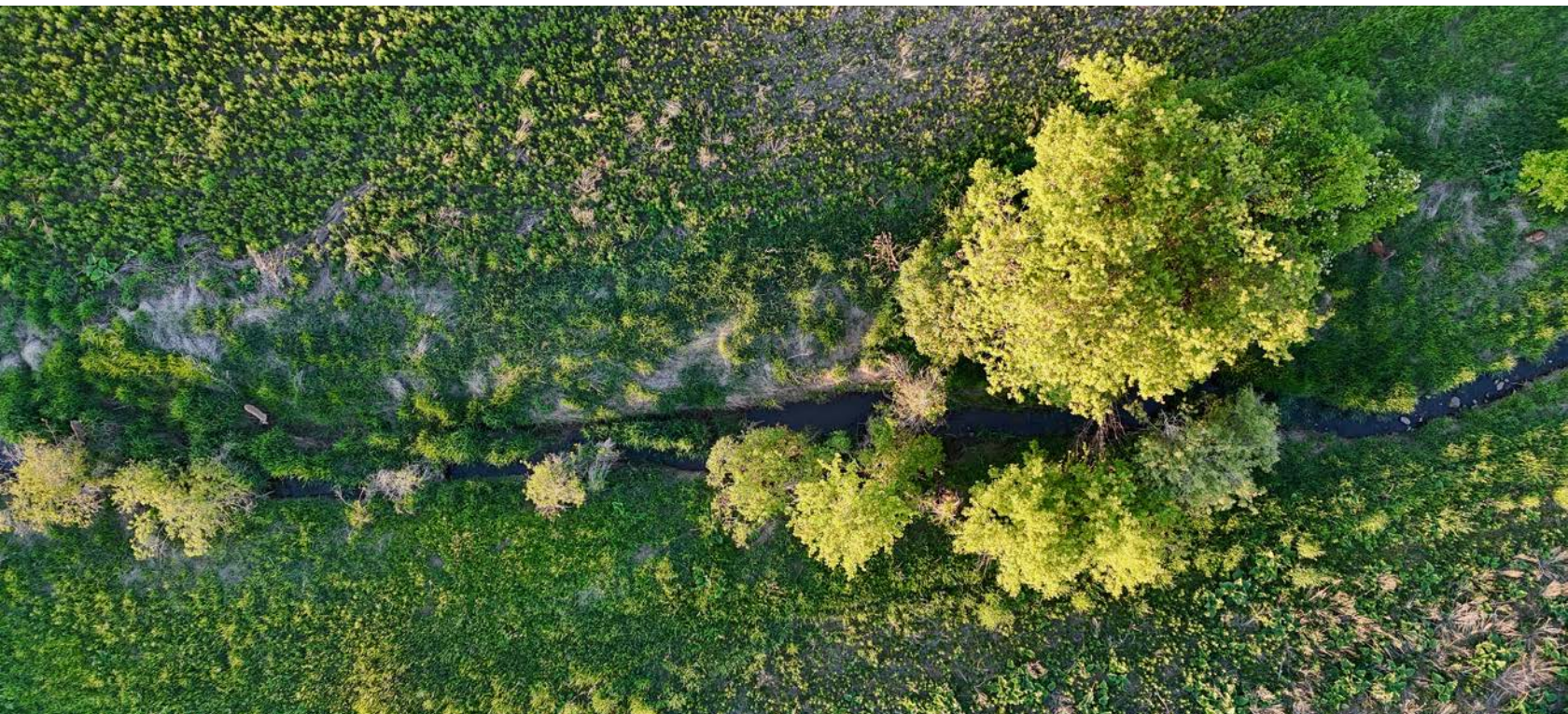
# ESTATE-SIZED HOMESITES

---



# SCENIC CREEK

---

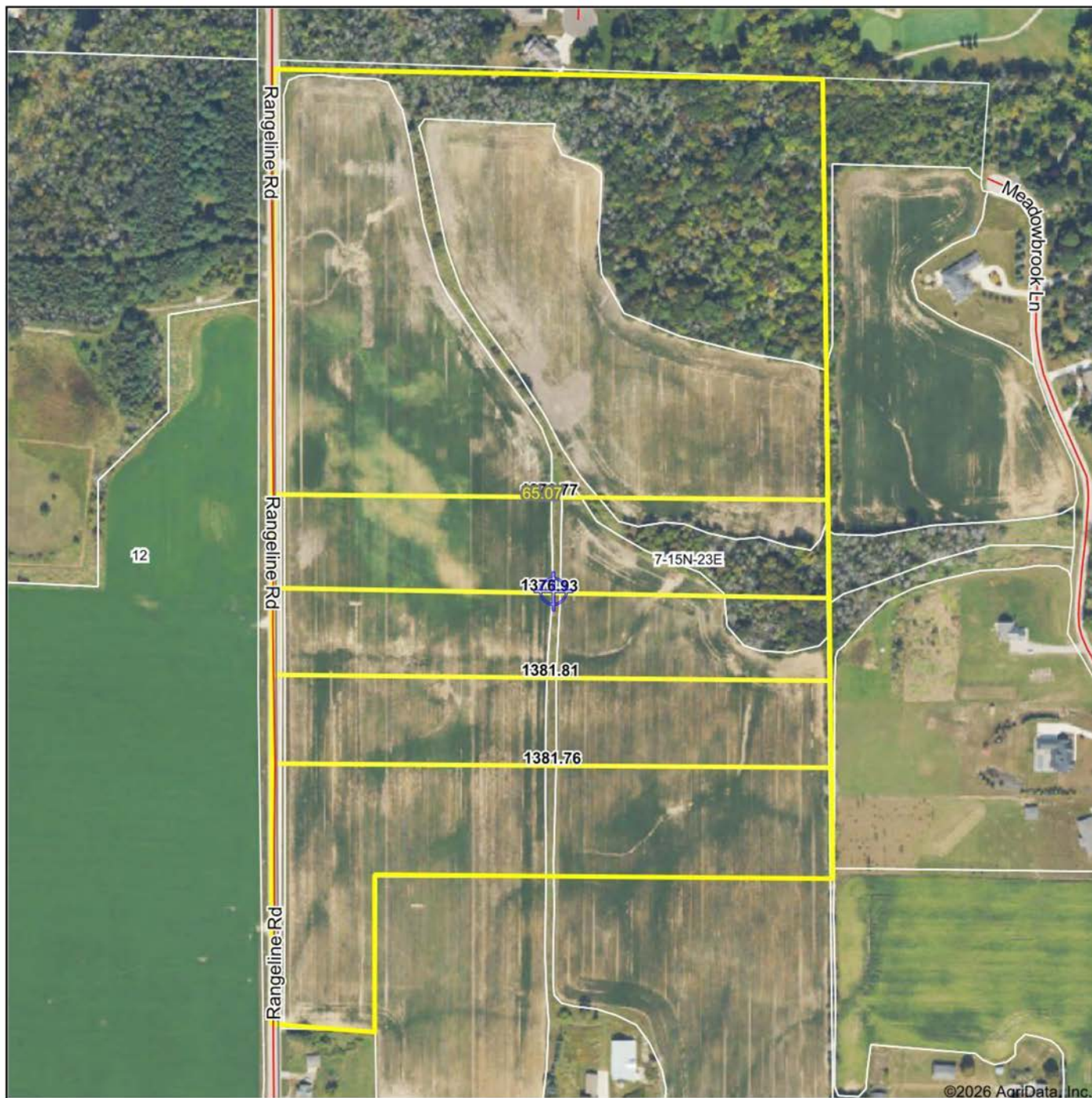


# BEAUTIFUL RURAL VIEWS

---



# AERIAL MAP



©2026 AgriData, Inc.

Map Center: 43° 46' 47.12, -87° 47' 51.56



Maps Provided By:



© AgriData, Inc. 2025 www.AgrDataInc.com

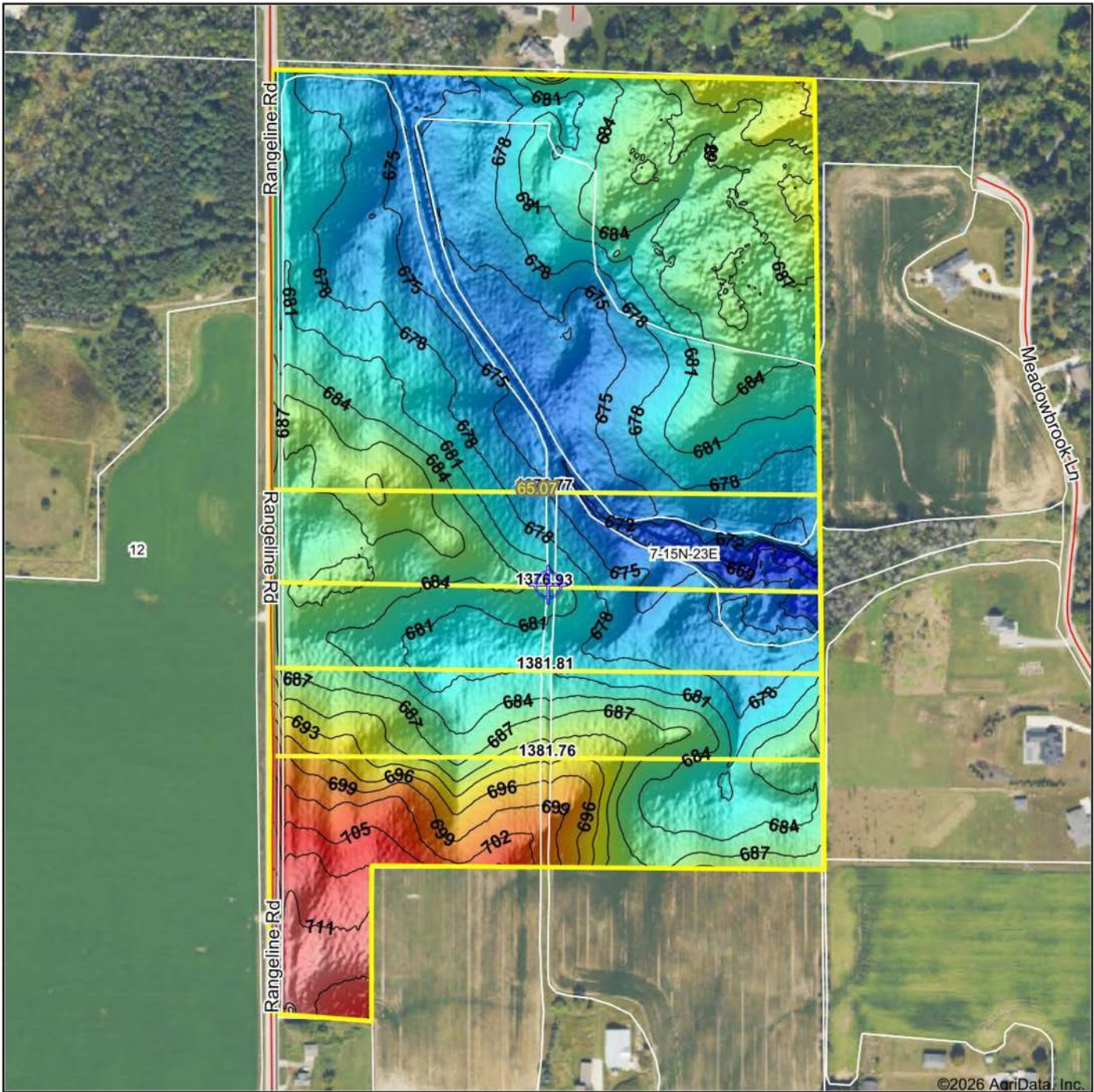
**7-15N-23E**  
**Sheboygan County**  
**Wisconsin**



6/3/2026

Field borders provided by Farm Service Agency as of 5/21/2008.

# HILLSHADE MAP



Low Elevation High



Source: USGS 1 meter dem

0ft 390ft 780ft

Interval(ft): 3



Min: 667.1

Max: 719.1

Range: 52.0

Average: 683.7

6/3/2026

Standard Deviation: 8.83 ft

**7-15N-23E**  
**Sheboygan County**  
**Wisconsin**

Boundary Center: 43° 46' 47.12, -87° 47' 51.56



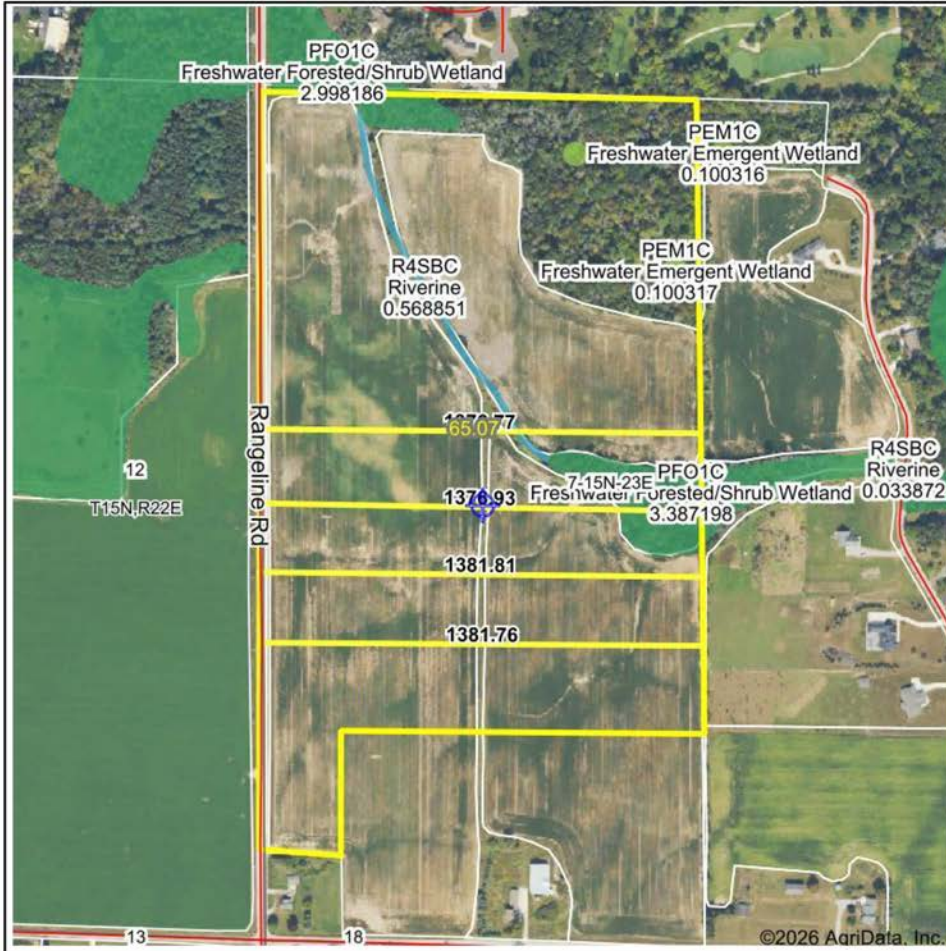
Maps Provided By:

**surety**  
CUSTOMIZED ONLINE MAPPING

© AgriData, Inc. 2025 www.AgriDataInc.com

Field borders provided by Farm Service Agency as of 5/21/2008.

# WETLANDS MAP



State: **Wisconsin**  
 Location: **7-15N-23E**  
 County: **Sheboygan**  
 Township: **Sheboygan**  
 Date: **6/3/2026**



Maps Provided By:



© AgriData, Inc. 2025 www.AgriDataInc.com

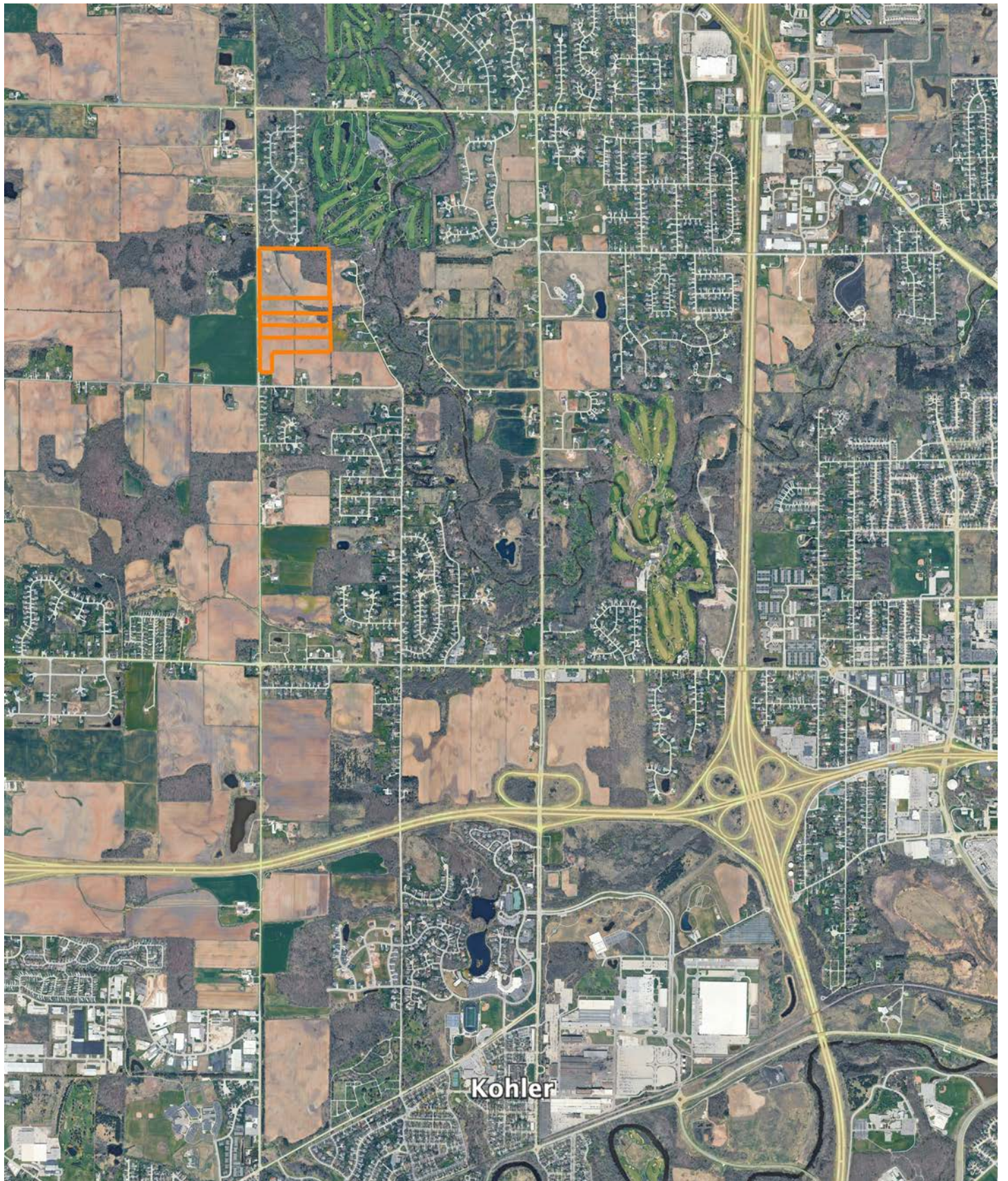


0ft 611ft 1222ft

Classification Code	Type	Acres
PFO1C	Freshwater Forested/Shrub Wetland	2.67
R4SBC	Riverine	0.57
PEM1C	Freshwater Emergent Wetland	0.20
Total Acres		3.44

Data Source: National Wetlands Inventory website. U.S. DoI, Fish and Wildlife Service, Washington, D.C. <http://www.fws.gov/wetlands/>

# OVERVIEW MAP



# AGENT CONTACT

Jordan is a dedicated, hard-working land agent passionate about helping clients navigate the land market in Southern Wisconsin. Growing up in Waukesha County, Jordan has a deep appreciation for the area's unique charm and potential. Ever since he could put on his own boots, Jordan has been hunting and helping manage his family farms in Grant and Crawford counties to produce year after year. Traveling across the different landscapes across the state has allowed him to appreciate all of the landscapes and markets the state has to offer.

Graduating from Marquette University with his Master's in Management and playing 5 years of Division I lacrosse has instilled the importance of teamwork into his approach to the real estate business. After spending 2 years at the Midwest Land Group office helping over 100 agents across 13 states build their businesses, he is ready to get back to supporting the state that holds such a large place in his heart. Being a part of hundreds of transactions through the home office gave Jordan a deep accountability in the fact that all parties involved in a transaction must fully own their roles for the best outcome possible and is never afraid to go above and beyond for his clients to ensure they achieve their goals.

In his spare time, Jordan enjoys spending time with his wife Elaina. They enjoy diving deeper into their faith life through their local church and organizations such as Young Life and FCA. When he isn't spending time with his family, you'll likely find Jordan working out with his friends or spending some time out on the open water fishing. If you're in the market for recreational, farmland, or investment properties in Wisconsin, be sure to give Jordan a call!



**JORDAN SCHMID**

LAND AGENT

**262.737.8823**

JordanSchmid@MidwestLandGroup.com



**MidwestLandGroup.com**

This property is being offered by Midwest Land Group, LLC. 913.674.8010. All information provided by Midwest Land Group, LLC or their agents was acquired from sources deemed accurate and reliable, however we do not warrant its accuracy or completeness. Midwest Land Group, LLC assumes no liability for error, omission or investment results. Midwest Land Group, LLC. Licensed in Alabama, Arkansas, Illinois, Indiana, Iowa, Kansas, Kentucky, Louisiana, Minnesota, Mississippi, Missouri, Montana, Nebraska, North Dakota, Ohio, Oklahoma, South Dakota, Tennessee, Texas, Wisconsin, and Wyoming.