

MIDWEST LAND GROUP PRESENTS



160 ACRES
SHARP COUNTY, AR

52 Summerfield Creek Road, Williford, Arkansas 72482



MIDWEST LAND GROUP IS HONORED TO PRESENT

THE SUMMERFIELD CREEK 160

A rare opportunity to own a true quarter-section of Ozark hunting and recreational land in northern Arkansas. This 160-acre tract is a perfect square measuring approximately one-half mile by one-half mile, offering exceptional privacy, manageable boundaries, and outstanding wildlife habitat.

The property features approximately 260 feet of elevation change, creating a diverse landscape of ridges, draws, benches, and drainages that support a wide variety of game and native vegetation. A well-established trail system provides excellent access throughout the property for ATVs, hiking, hunting, and habitat management.

Water is abundant and dependable. A fresh-water spring provides year-round live water and is easily accessible, while additional ephemeral springs and seasonal drainages further enhance the property's wildlife appeal. Numerous food plot openings and multiple established deer stand locations make this tract ready for immediate

hunting enjoyment. Wildlife sign is exceptional, with extensive turkey scratching observed throughout the property each spring and strong deer activity across the varied terrain. Mixed hardwood timber and cedar stands create ideal bedding, browse, and cover. The timber was select-cut approximately 30 years ago, resulting in a healthy, diverse forest structure that continues to provide excellent habitat.

Additional highlights include gated access directly from the county road, numerous native blackberry patches, and a secluded setting that makes this property equally suited for recreation, hunting, camping, or a future cabin retreat.

Whether you're searching for a premier hunting tract, a recreational getaway, or a long-term land investment, this highly desirable 160-acre block on Summerfield Creek Road offers the size, water, habitat diversity, and accessibility that serious land buyers seek.



PROPERTY FEATURES

COUNTY: **SHARP** | STATE: **ARKANSAS** | ACRES: **160**

- True 160-acre quarter section (1/2 mile x 1/2 mile)
- Located on Summerfield Creek Road near Williford, Arkansas
- Approximately 260 feet of elevation change
- Year-round freshwater spring on the property
- Additional seasonal springs and drainages
- Extensive internal trail system
- Multiple established deer stand locations
- Food plot openings already in place
- Mixed hardwood and cedar timber
- Gated county road access with excellent privacy



TRUE 160-ACRE QUARTER SECTION

This 160-acre tract is a perfect square measuring approximately one-half mile by one-half mile, offering exceptional privacy, manageable boundaries, and outstanding wildlife habitat.



EXTENSIVE TRAIL SYSTEM



YEAR-ROUND FRESHWATER SPRING

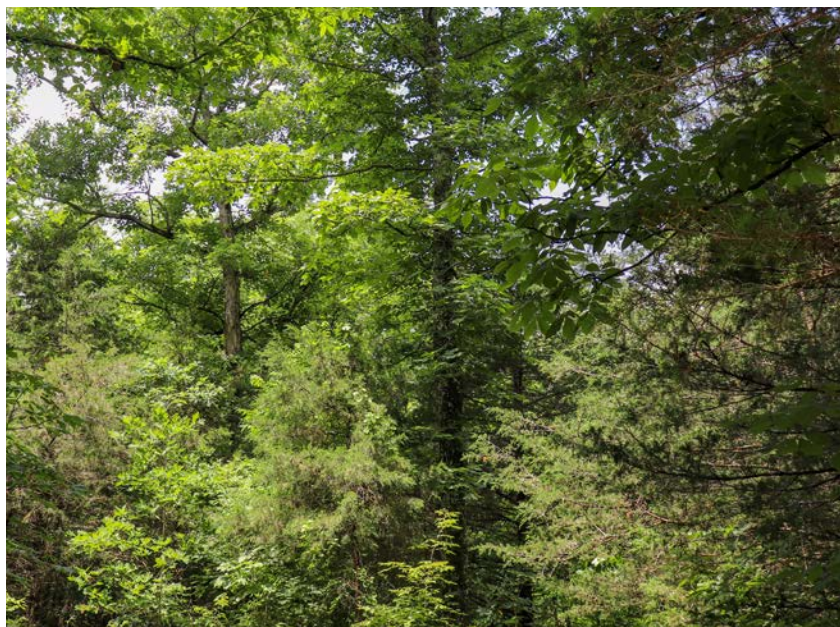
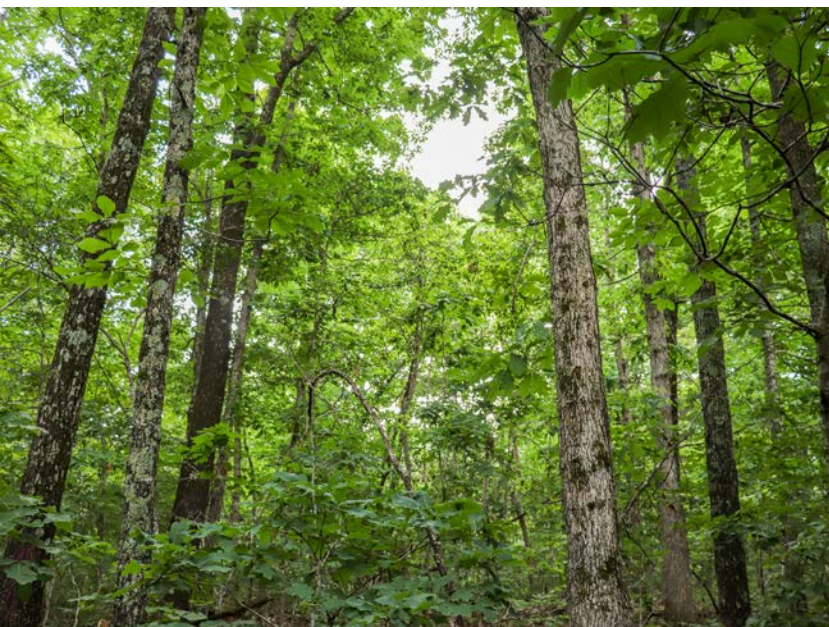


260 FEET OF ELEVATION CHANGE

The property features approximately 260 feet of elevation change, creating a diverse landscape of ridges, draws, benches, and drainages that support a wide variety of game and native vegetation.



MIXED HARDWOOD AND CEDAR TIMBER



HUNTING OPPORTUNITIES

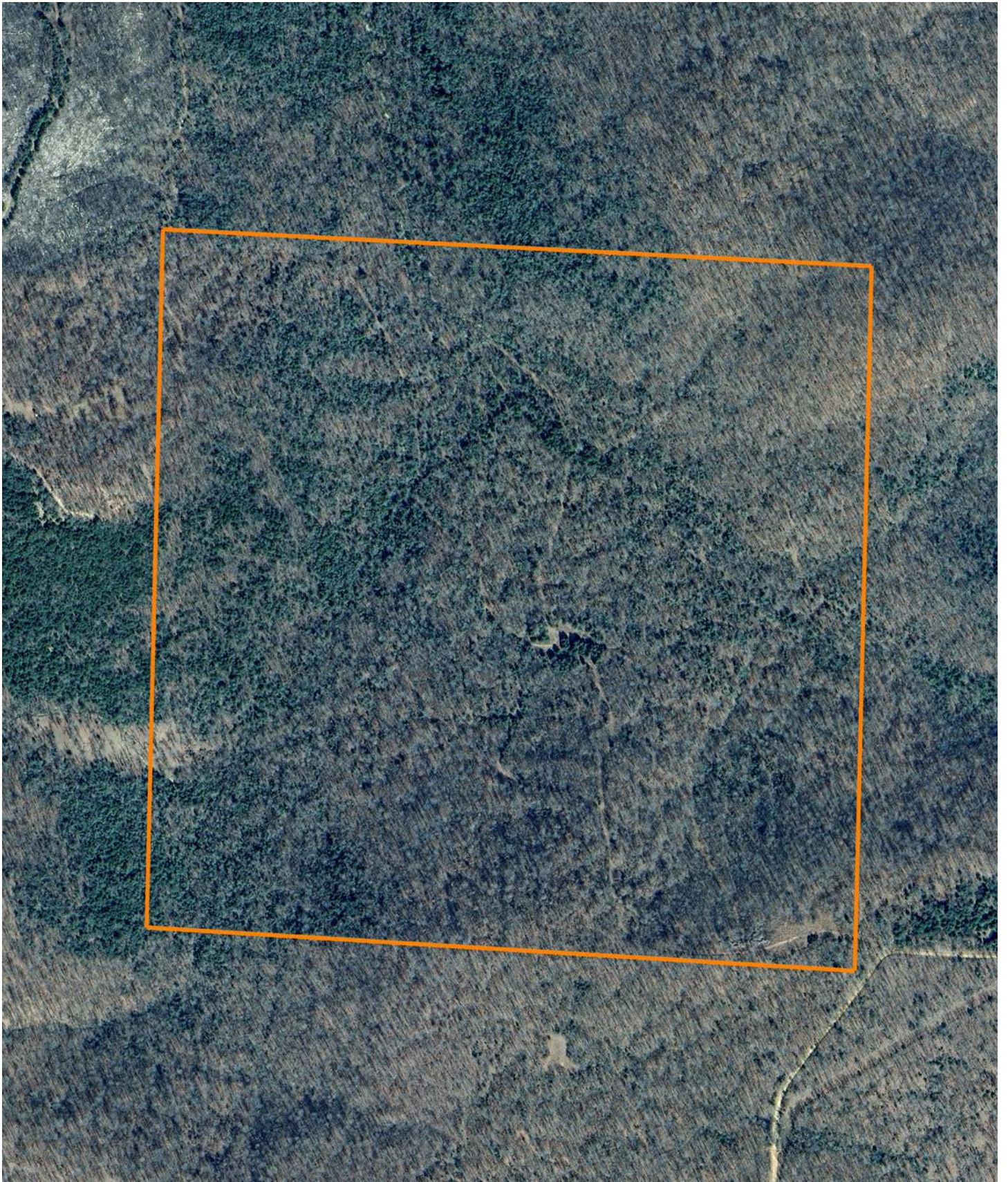
Numerous food plot openings and multiple established deer stand locations make this tract ready for immediate hunting enjoyment. Wildlife sign is exceptional, with extensive turkey scratching observed throughout the property each spring and strong deer activity across the varied terrain.



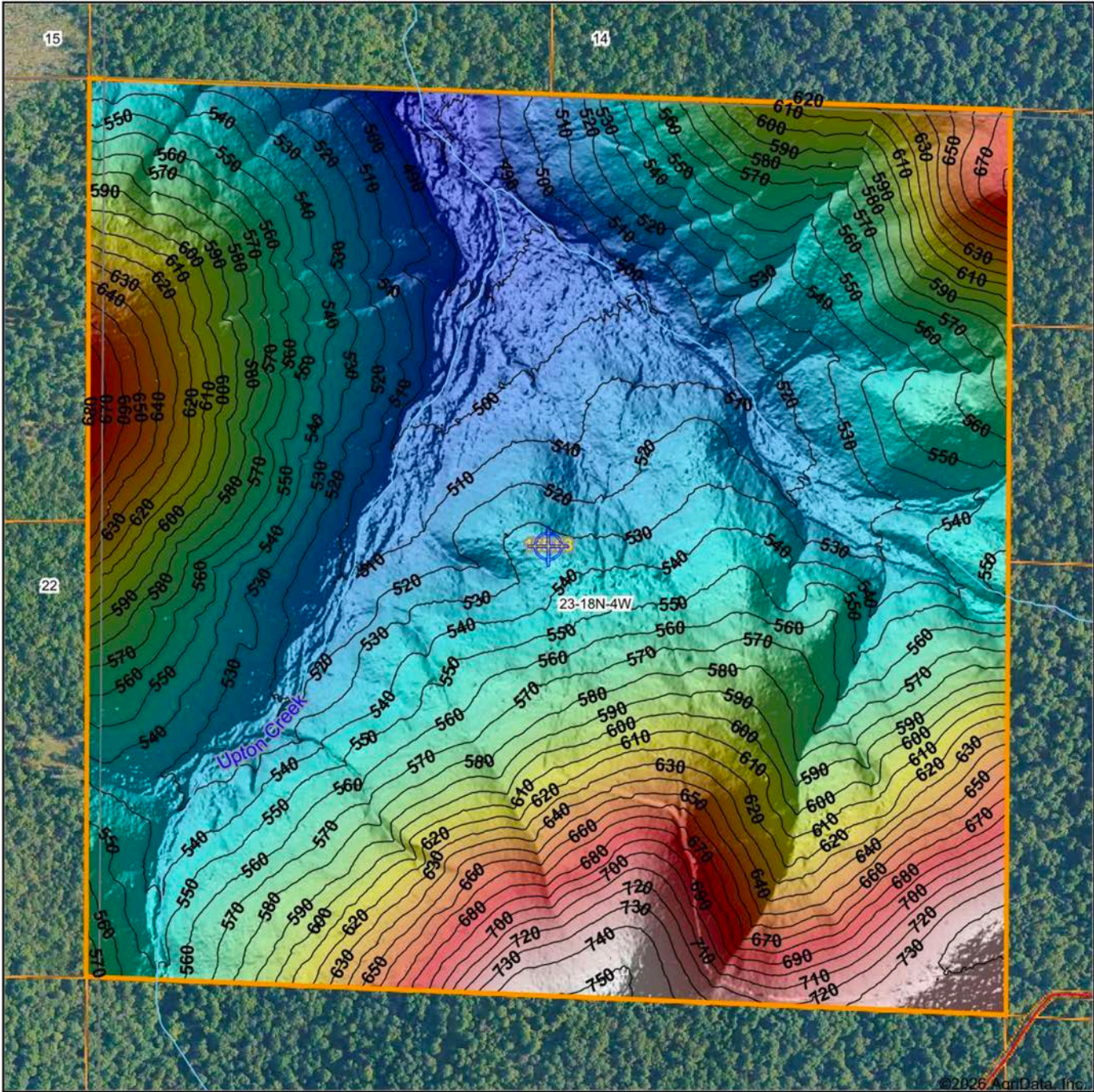
ADDITIONAL PHOTOS



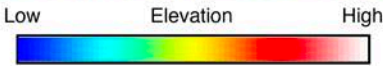
AERIAL MAP



HILLSHADE MAP



©2026 AgriData, Inc.

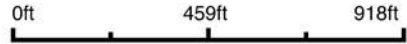


Maps Provided By:



© AgriData, Inc. 2025 www.AgriDataInc.com

Source: USGS 1 meter dem
 Interval(ft): 10
 Min: 474.5
 Max: 752.4
 Range: 277.9
 Average: 572.3
 Standard Deviation: 62.34 ft

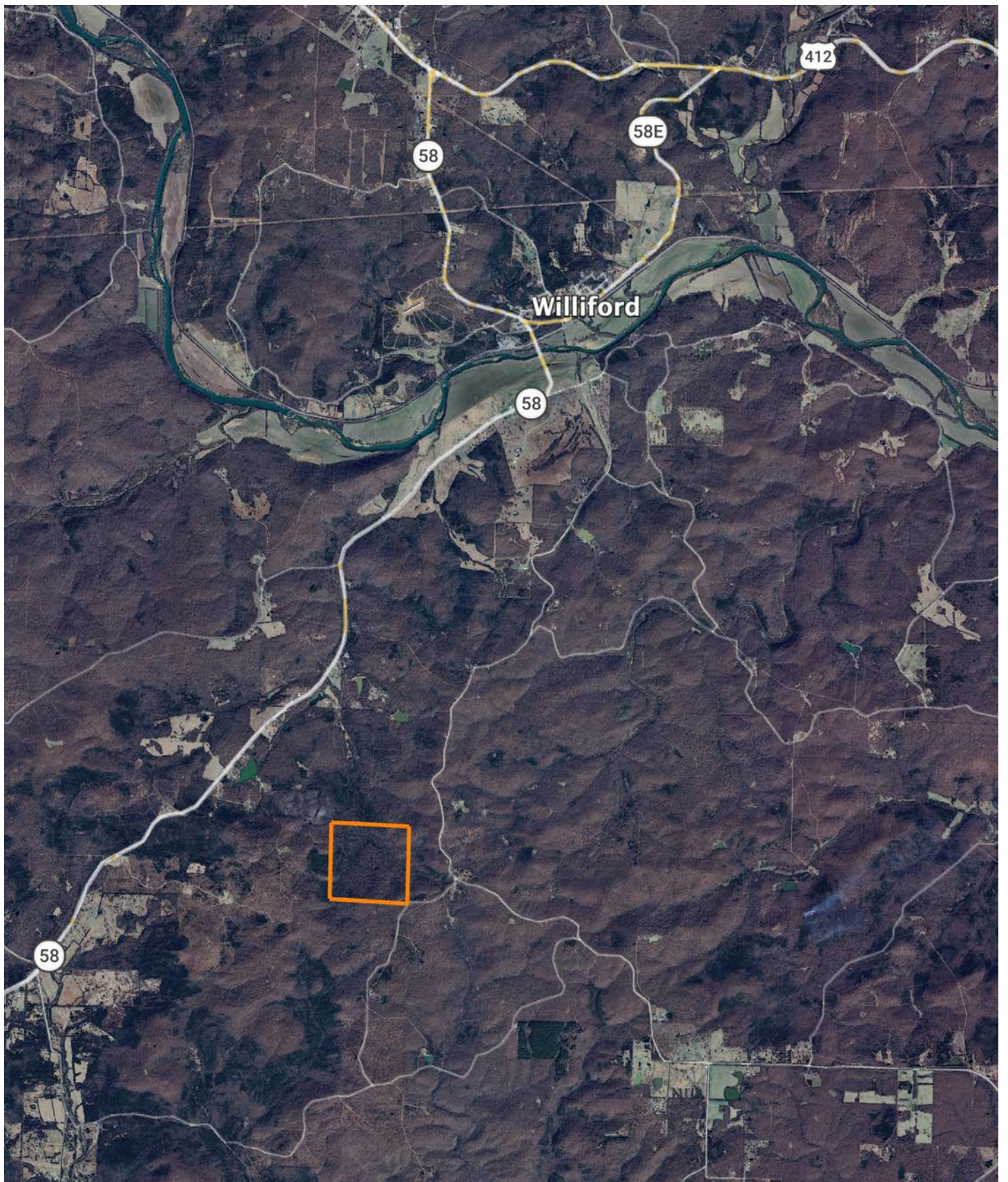


3/28/2026

23-18N-4W
Sharp County
Arkansas

Boundary Center: 36° 11' 54.92, -91° 22' 57.19

OVERVIEW MAP



AGENT CONTACT

Cameron Boyd was born in Jonesboro and raised on the values of hard work, integrity, and reverence for wild places. With deep family roots in agriculture and a lifetime spent outdoors, he understands the land not just as real estate, but as a way of life. Today, he owns a cattle and hay farm in North Central Arkansas — land that doubles as his personal hunting ground and a living canvas for habitat improvement projects in partnership with the Arkansas Game & Fish Commission.

Before entering land sales, Cameron managed large-scale row crop operations, ran heavy equipment for precision land leveling, and even owned a custom cotton harvesting business. If it involved soil, water, or steel, he embraced it and used it to learn every inch of what makes rural ground work.

Cameron serves Northern Arkansas with the eye of a hunter and conservationist, the hands of a builder, and the heart of someone who genuinely wants to help people find their place. He's driven, dependable, and not afraid to take on big challenges — especially when it comes to helping fulfill the lifelong dreams of his clients.



CAMERON BOYD

LAND AGENT

870.759.3011

CBoyd@MidwestLandGroup.com



MidwestLandGroup.com

This property is being offered by Midwest Land Group, LLC. 913.674.8010. All information provided by Midwest Land Group, LLC or their agents was acquired from sources deemed accurate and reliable, however we do not warrant its accuracy or completeness. Midwest Land Group, LLC assumes no liability for error, omission or investment results. Midwest Land Group, LLC. Licensed in Alabama, Arkansas, Illinois, Indiana, Iowa, Kansas, Kentucky, Louisiana, Minnesota, Mississippi, Missouri, Montana, Nebraska, North Dakota, Ohio, Oklahoma, South Dakota, Tennessee, Texas, Wisconsin, and Wyoming.