

MIDWEST LAND GROUP PRESENTS

160 ACRES IN

# PAWNEE COUNTY OKLAHOMA



92629 SOUTH 34200 ROAD, PAWNEE, OK 74058

MIDWEST LAND GROUP IS HONORED TO PRESENT

# PREMIER ESTATE IN WESTERN PAWNEE COUNTY

---

Welcome to a premier outdoorsman's paradise where luxury living meets unmatched recreational opportunity. Nestled on 160 +/- fully fenced acres of mature oak timber, this exceptional estate offers the perfect blend of comfort, efficiency, and adventure.

The stunning custom-built main residence features 5 bedrooms, 3.5 bathrooms, exquisite knotty alder finishes, and hand-cut tavern wood floors throughout. The wood-burning fireplace is also plumbed into separate ductwork to provide additional heat. Designed with both elegance and practicality in mind, the home includes a safe room, an attached 3-car garage, and breathtaking views from the expansive back patio overlooking the property.

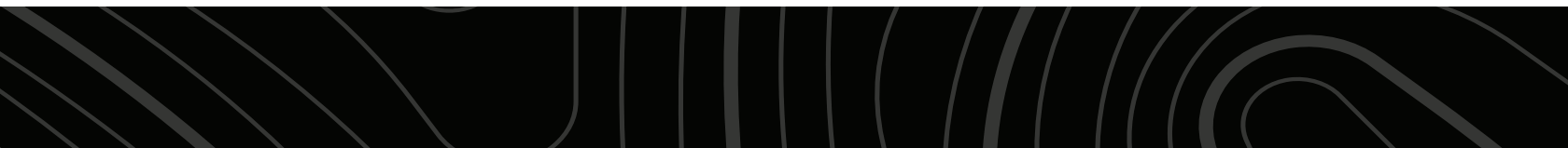
Built for long-term sustainability and efficiency, the estate is supported by four 200 geothermal water wells and solar collection systems, providing exceptional energy performance. Guests and extended family will appreciate the separate 3 bedroom, 2 bath guest home, offering privacy and comfort for visitors or potential income opportunities. The home and guest home are also serviced by two good water wells (naturally soft) with a whole-house water filtration system. A Generac

Generator ran off propane, providing security if there is a sudden loss of power to the home, shop, and 1 water well.

Outdoor amenities are second to none. The property features two fully stocked ponds, over five miles of established trail systems, abundant mature oak timber, and outstanding wildlife habitat supporting trophy whitetail deer and quail populations. A 45'x70' insulated red iron shop with an additional 20' lean-to provides ample space for equipment, vehicles, and recreational gear.

Access is secured through an electronic gated entrance, creating a private retreat unlike any other. Whether you're seeking a luxury ranch, hunting retreat, family compound, corporate getaway, or a unique venue for weddings and special events, this remarkable property offers endless possibilities.

Rarely does a property combine high-end living, recreational excellence, and income-producing potential in such a spectacular setting. If interested in learning more, call or text (918) 578-9353. Shown by appointment only.



# PROPERTY FEATURES

COUNTY: **PAWNEE** | STATE: **OKLAHOMA** | ACRES: **160**

- 160 +/- fully fenced acres
- 5 bed, 3.5 bath custom home
- Electronic gated entry
- 4 200 geothermal water wells
- Solar collection system
- 3 bed, 2 bath guest home
- Wood-burning fireplace plumbed into separate ductwork to provide additional heat
- Generac Generator
- 45'x70' insulated red iron shop with 20' lean-to
- Multiple outbuildings
- Large fenced garden
- Trophy whitetails
- Substantial quail population
- 2 fully stocked ponds
- 5+ miles of trail systems
- Mature oaks
- Income potential (wedding venues, home and guest home rentals)
- 5 minutes to Sooner Lake
- 9 miles to Interstate 412
- 30 minutes to Stillwater
- 78 miles west of Tulsa
- 92 miles to OKC
- 107 miles to Wichita



# CUSTOM-BUILT HOME

---

The stunning custom-built main residence features 5 bedrooms, 3.5 bathrooms, exquisite knotty alder finishes, and hand-cut tavern wood floors throughout. Designed with both elegance and practicality in mind, the home includes a safe room, an attached 3-car garage, and breathtaking views from the expansive back patio overlooking the property.



# ADDITIONAL INTERIOR PHOTOS



# BACK PATIO

---



# 5+ MILES OF TRAIL SYSTEMS

---



# 2 FULLY STOCKED PONDS

---



# MATURE OAKS

---



# GUEST HOUSE

---



# INCOME POTENTIAL

---

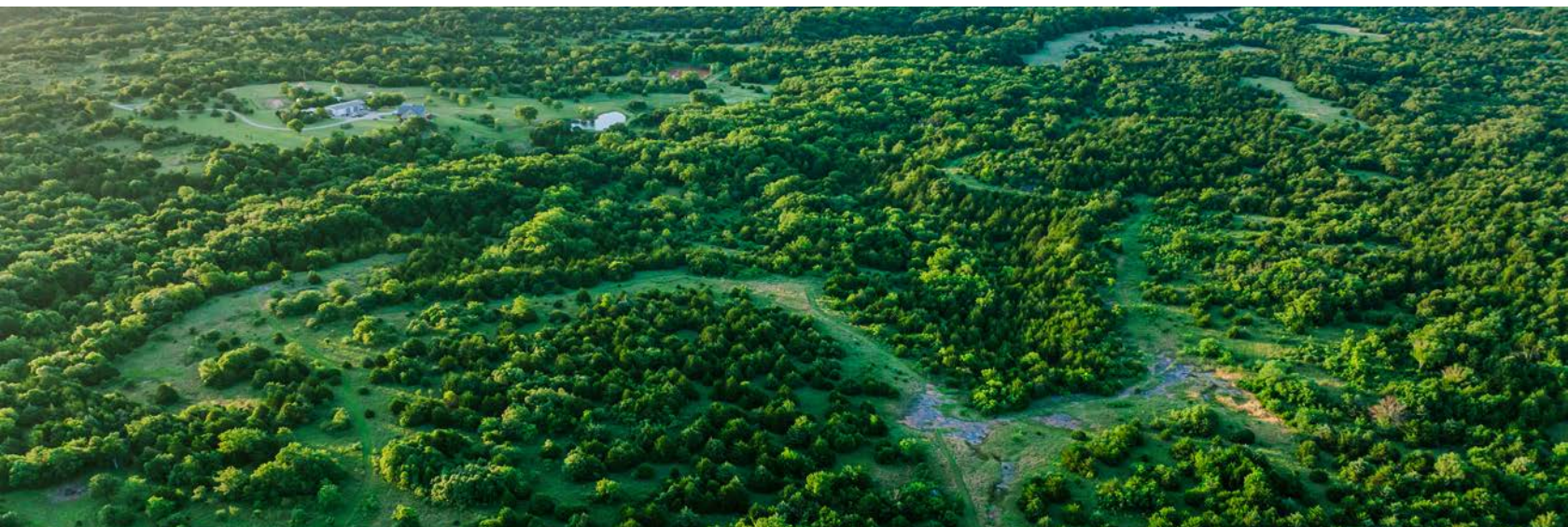
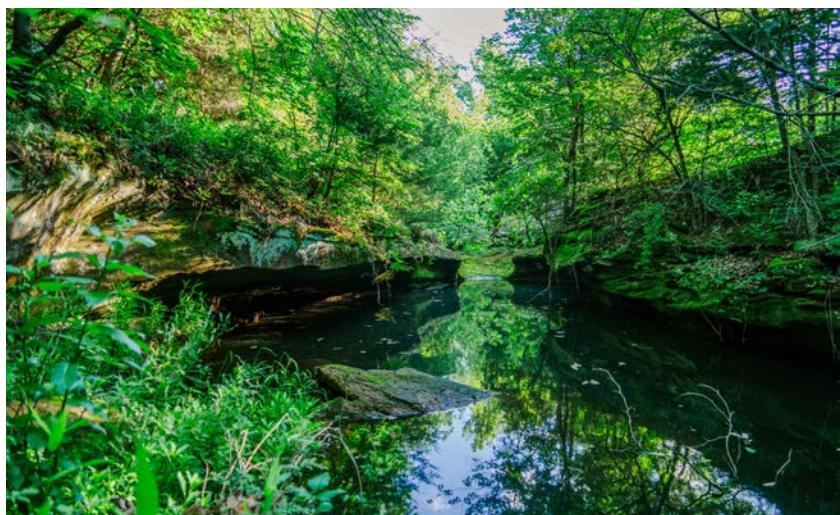
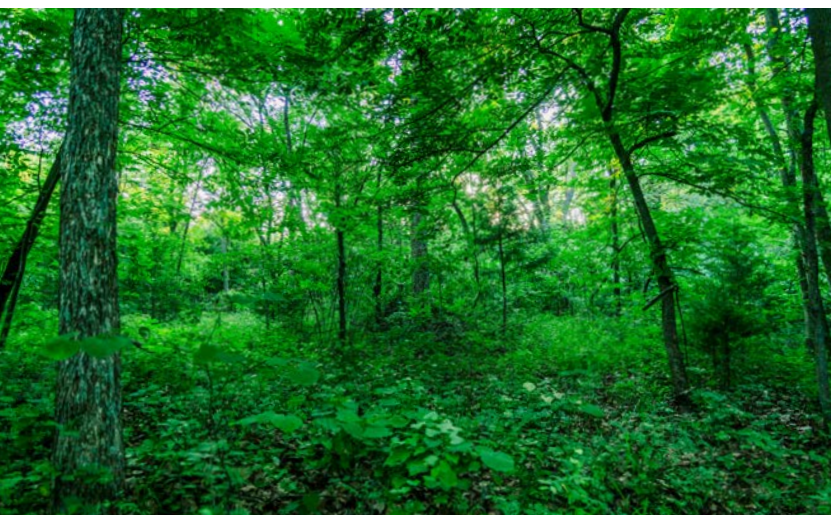
Whether you're seeking a luxury ranch, hunting retreat, family compound, corporate getaway, or a unique venue for weddings and special events, this remarkable property offers endless possibilities.



# TROPHY WHITETAILS

---

Outdoor amenities are second to none. The property features two fully stocked ponds, over five miles of established trail systems, abundant mature oak timber, and outstanding wildlife habitat supporting trophy whitetail deer and quail populations.



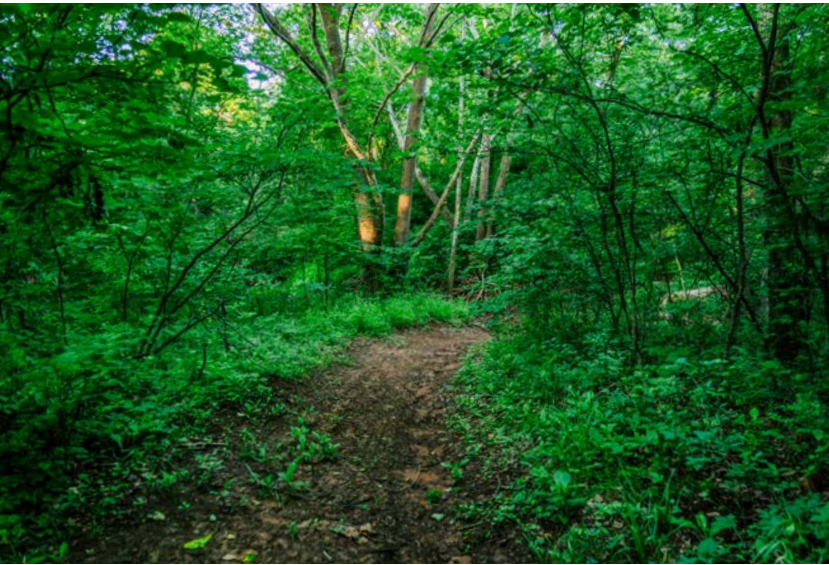
# 45'X70' INSULATED RED IRON SHOP

A 45'x70' insulated red iron shop with an additional 20' lean-to provides ample space for equipment, vehicles, and recreational gear.



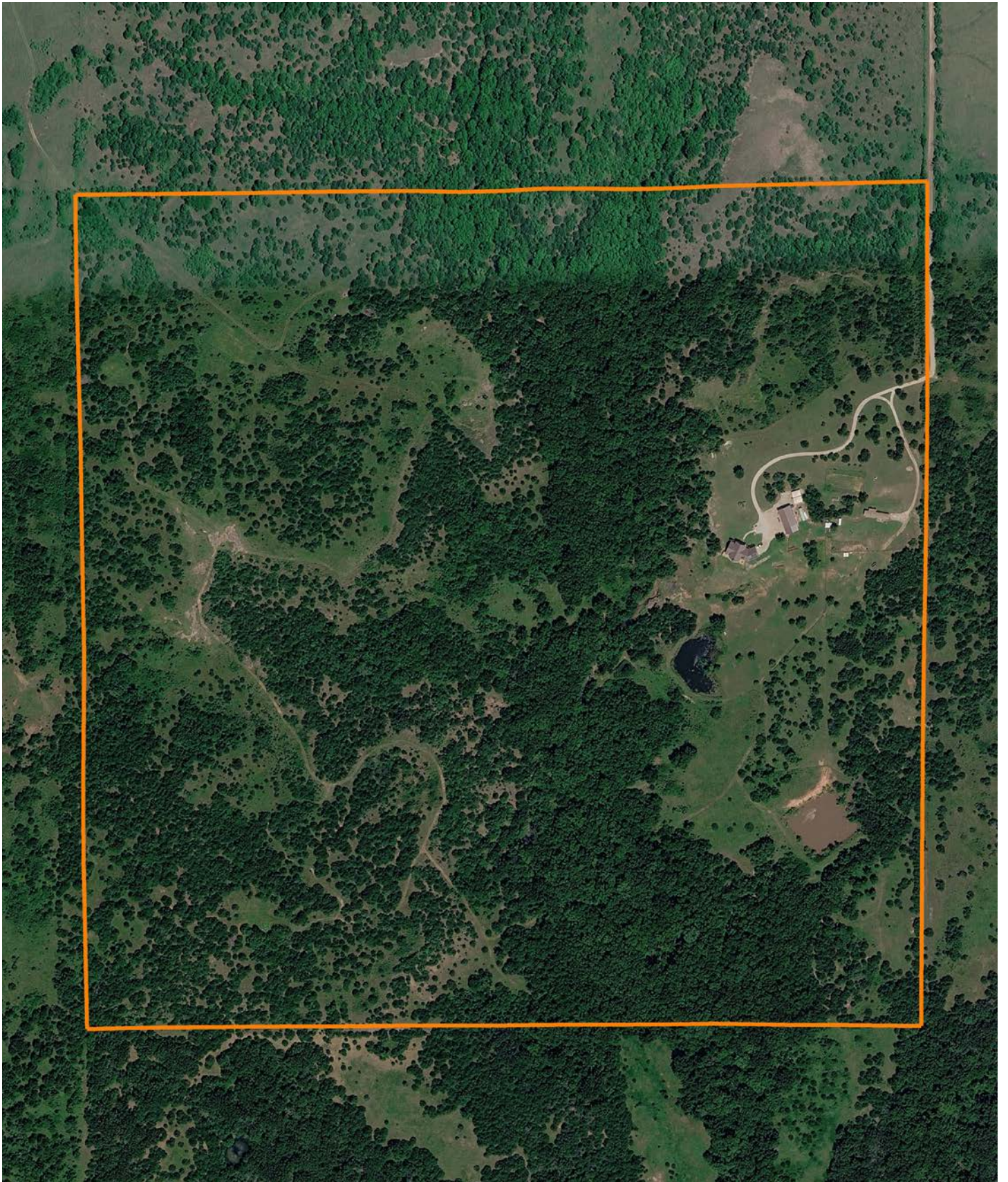
# ADDITIONAL PHOTOS

---

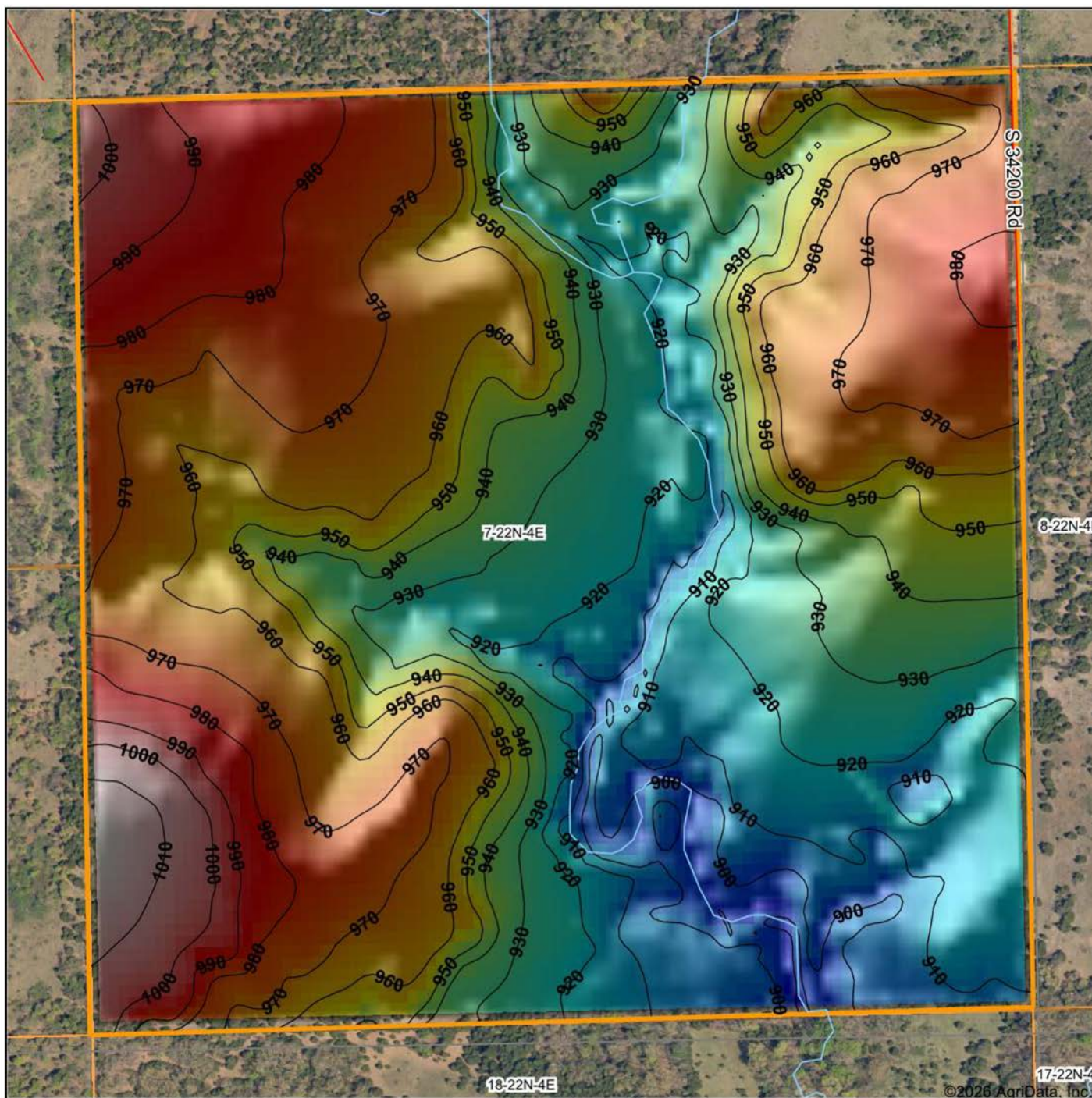


# AERIAL MAP

---



# HILLSHADE MAP



Low Elevation High



Maps Provided By:



© AgriData, Inc. 2025 www.AgriDataInc.com

Source: USGS 10 meter dem  
 Interval(ft): 10  
 Min: 885.2  
 Max: 1,017.9  
 Range: 132.7  
 Average: 948.3  
 Standard Deviation: 28.77 ft

0ft 440ft 880ft

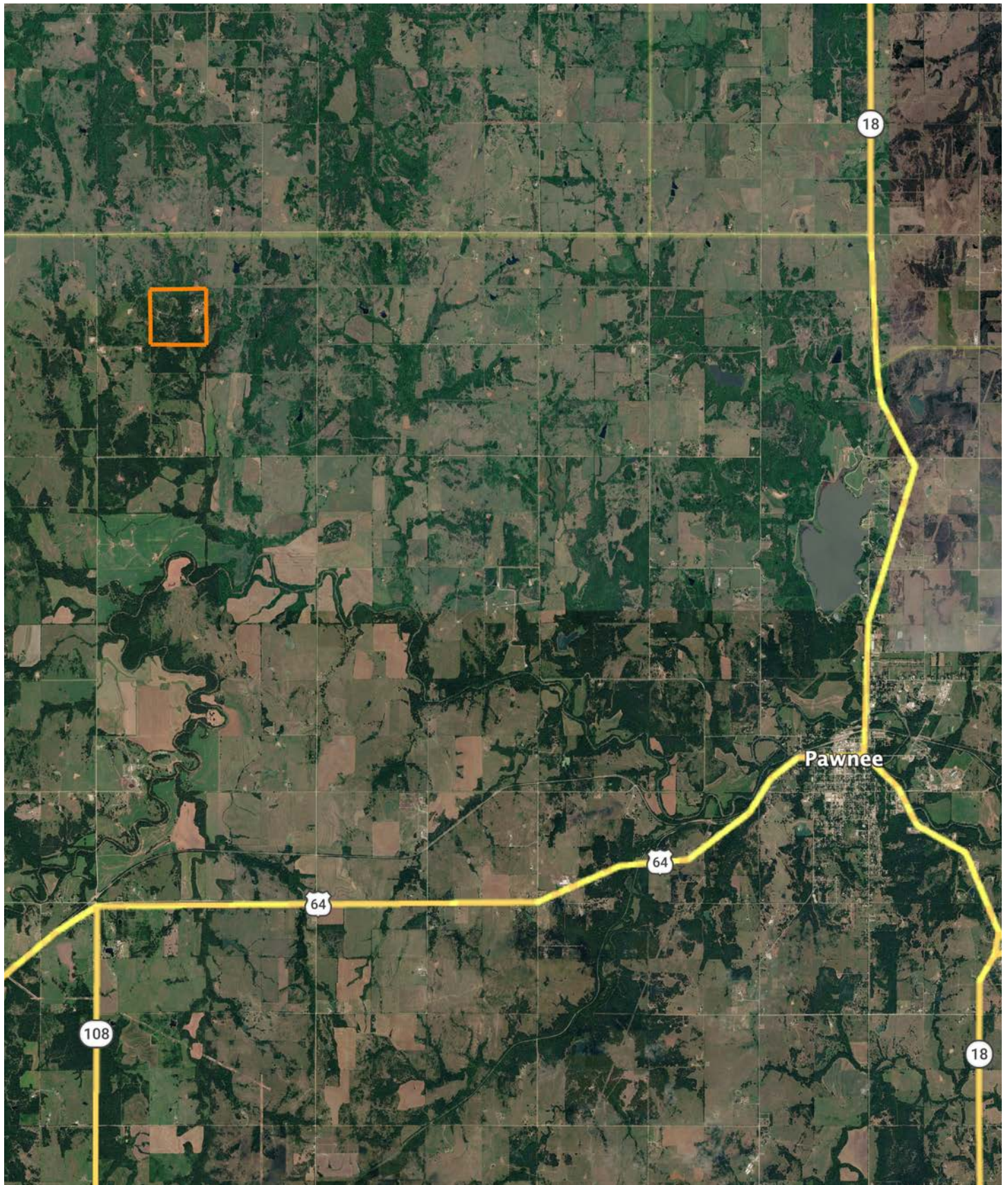


6/14/2026

**7-22N-4E**  
**Pawnee County**  
**Oklahoma**

Boundary Center: 36° 23' 42.29, -96° 54' 42

# OVERVIEW MAP



# AGENT CONTACT

---

When it comes to discussing land or habitat improvement, Will Pester's enthusiasm and passion for the outdoors always shine through. Will was born and raised in Pawhuska, Oklahoma, a little over an hour's drive north of Tulsa. Here, he graduated from Pawhuska High School, went on to attend Rogers State University in Claremore, then obtained a Bachelor's Degree in fire protection and safety technology engineering from Oklahoma State in Stillwater.

For several years, Will worked in the Oil and Gas Industry, specializing in safety and pipeline inspection. At Midwest Land Group, he's able to use his experience in investigation and analysis to market the unique features your land has to offer to potential buyers.

When he's not working, you can often find him chasing mature whitetails with his bow, fishing with his kids, golfing, and traveling with his wife. He also serves as a coach for his son's basketball and football teams. Will lives in Pawhuska with his wife Jeri, sons Beck and Penn, and daughter Karter. If you're ready to buy or sell, give Will a call.



**WILL PESTER,** LAND AGENT  
**918.578.9353**  
WPester@MidwestLandGroup.com



**MidwestLandGroup.com**

This property is being offered by Midwest Land Group, LLC. 913.674.8010. All information provided by Midwest Land Group, LLC or their agents was acquired from sources deemed accurate and reliable, however we do not warrant its accuracy or completeness. Midwest Land Group, LLC assumes no liability for error, omission or investment results. Midwest Land Group, LLC. Licensed in Alabama, Arkansas, Illinois, Indiana, Iowa, Kansas, Kentucky, Louisiana, Minnesota, Mississippi, Missouri, Montana, Nebraska, North Dakota, Ohio, Oklahoma, South Dakota, Tennessee, Texas, Wisconsin, and Wyoming.