

MIDWEST LAND GROUP PRESENTS



35 ACRES  
**NEWTON COUNTY, AR**

HC 31 Box 120 F, Jasper, Arkansas 72641



MIDWEST LAND GROUP IS HONORED TO PRESENT

# WILDERNESS LIVING WITH NATIONAL FOREST BOUNDARY

---

Sitting on 35 +/- acres and bordering the Ozark National Forest, this peaceful homestead is as close to true wilderness living as you're gonna find. The almost 1,578 square foot 2 bedroom, 2 bath home features a spacious living area with large windows that let in lots of natural light. A wood-burning stove creates a cozy feel and provides extra heat during the colder months. The main living area and bedrooms offer durable LVP flooring, while the kitchen features wood cabinets, granite countertops, and a propane cooktop and oven. Sliding doors from both the dining area and primary bedroom lead out to a composite deck, making it the perfect place to grill, entertain guests, or enjoy a quiet morning with a coffee in hand. A large fenced backyard gives pets and kids plenty of room to roam with added peace of mind.

If you've been looking for a place that offers a little more independence, this property is worth a look. Water is supplied by a rainwater collection system with up to 5,000 gallons of storage at any given time, which has comfortably supported a family of four. There is also a backup solar system that will restore power and operate the house for up to three days should the power go out. Several storage buildings provide room for tools, equipment, hobbies, or future projects and could even be converted into a workshop, studio, or guest space. The land itself is a great mix of mature timber, thick cover, and gentle terrain. Nearly a mile of trails winds through the property, making it easy to access your favorite stand

or blinds, ride an ATV, or simply enjoy a hike through the woods. You'll also find numerous locations that could serve as future building sites, making this ideal as a family compound.

Outdoor lovers will appreciate everything this property has to offer. A small pond stocked with bass and channel catfish sits near the northwest corner of the property. The land joins the Ozark National Forest along the southern boundary and touches it again on the northeast corner, giving you direct access to thousands of acres of public land. Just south of the property are impressive rock outcroppings and a seasonal waterfall that make a great spot for exploring, picnicking, or cooling off on a warm day. A creek further into the National Forest offers even more opportunities for outdoor enjoyment. Located just south of the Buffalo and Little Buffalo Rivers, this property puts hunting, fishing, hiking, kayaking, and countless outdoor adventures right at your doorstep.

While this property definitely offers plenty of peace and privacy, you're not completely off the beaten path. Located just 25 minutes from Jasper and a little over an hour from Russellville and Clarksville, it's easy to make a supply run or enjoy an afternoon of dining and shopping. Whether you're looking for a full-time homestead, a hunting basecamp, or a place to get away, this property offers that rare combination that everyone looks for. Call Land Agent Chris Shadrick at (479) 530-2470 to schedule your private tour today.

# PROPERTY FEATURES

COUNTY: **NEWTON** | STATE: **ARKANSAS** | ACRES: **35**

- 1,578 square foot home
- Borders Ozark National Forest
- Deer, bear, and turkey
- Direct public land access
- 35 +/- acres
- Stocked pond
- Nearly 1 mile of trails
- Multiple outbuildings
- 5,000-gallon rainwater system
- Back-up solar power
- Additional build sites
- Just south of Buffalo River area
- Hunting, hiking, kayaking & fishing opportunities
- Fenced backyard
- Good timber & wildlife habitat



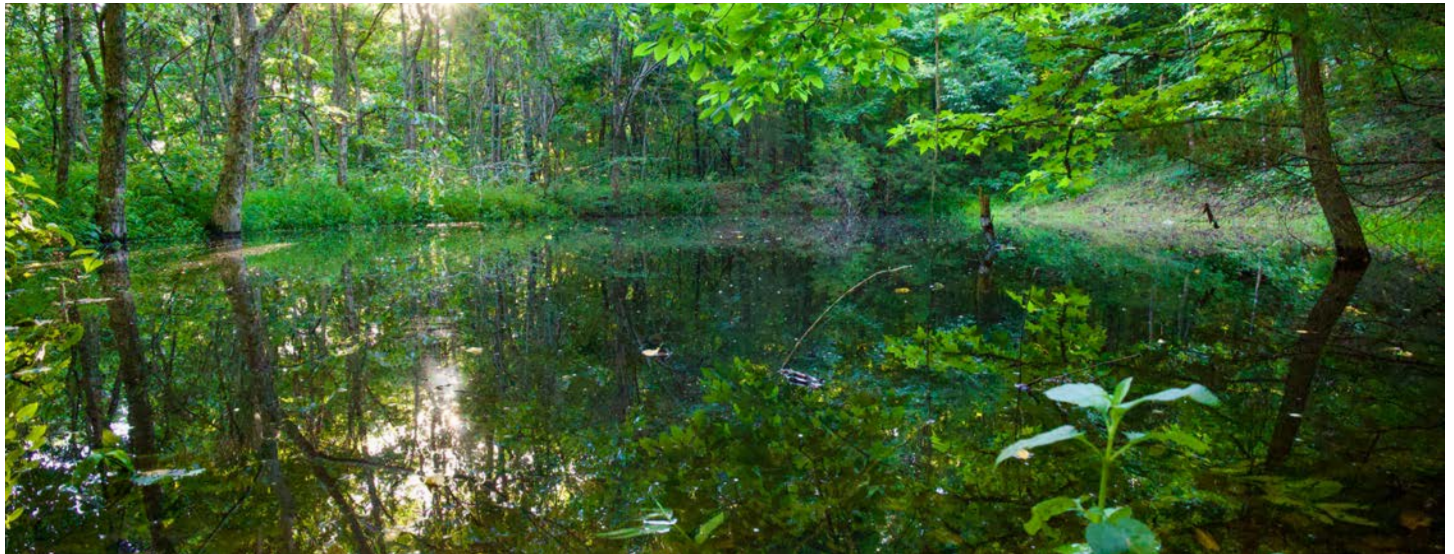
# 1,578 SQUARE FOOT HOME

The almost 1,578 square foot 2 bedroom, 2 bath home features a spacious living area with large windows that let in lots of natural light.



# STOCKED POND

---



# MULTIPLE OUTBUILDINGS

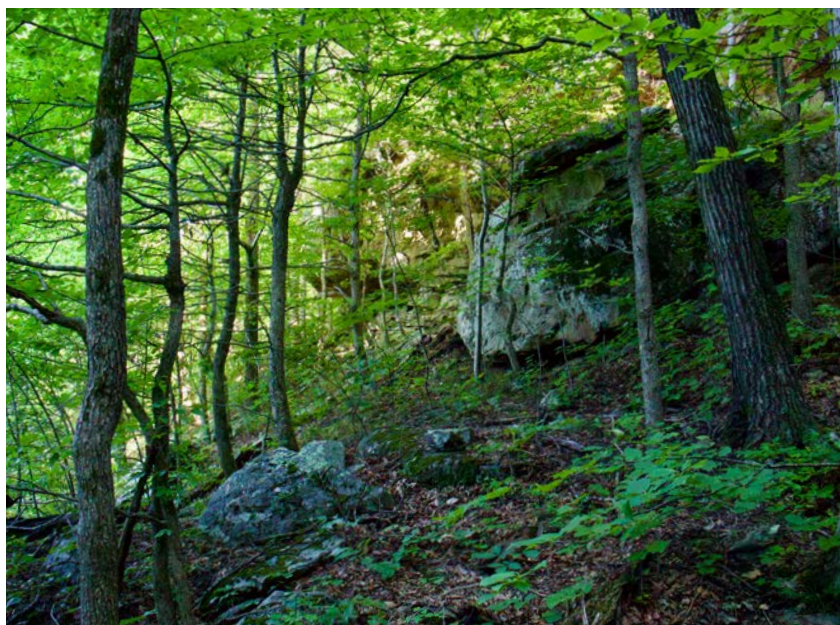
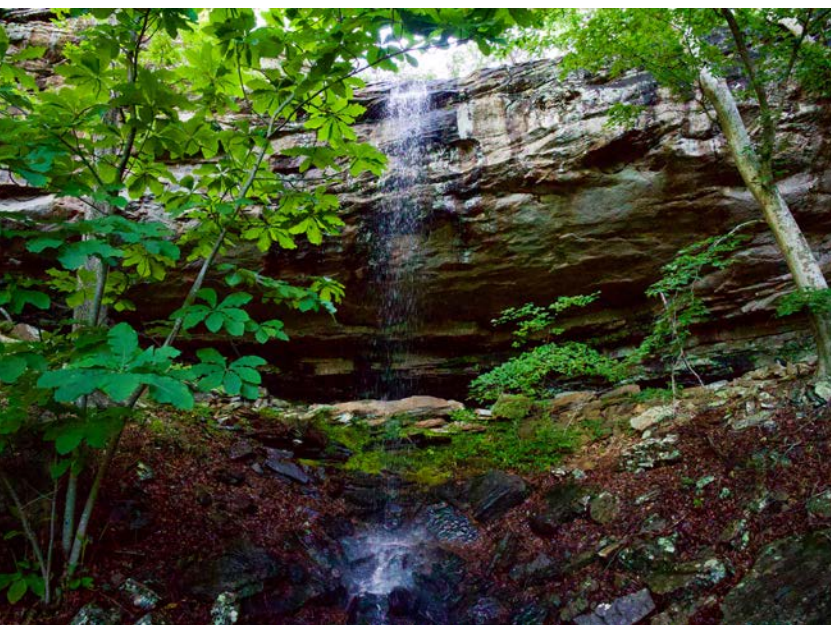
---



# BORDERS OZARK NATIONAL FOREST

---

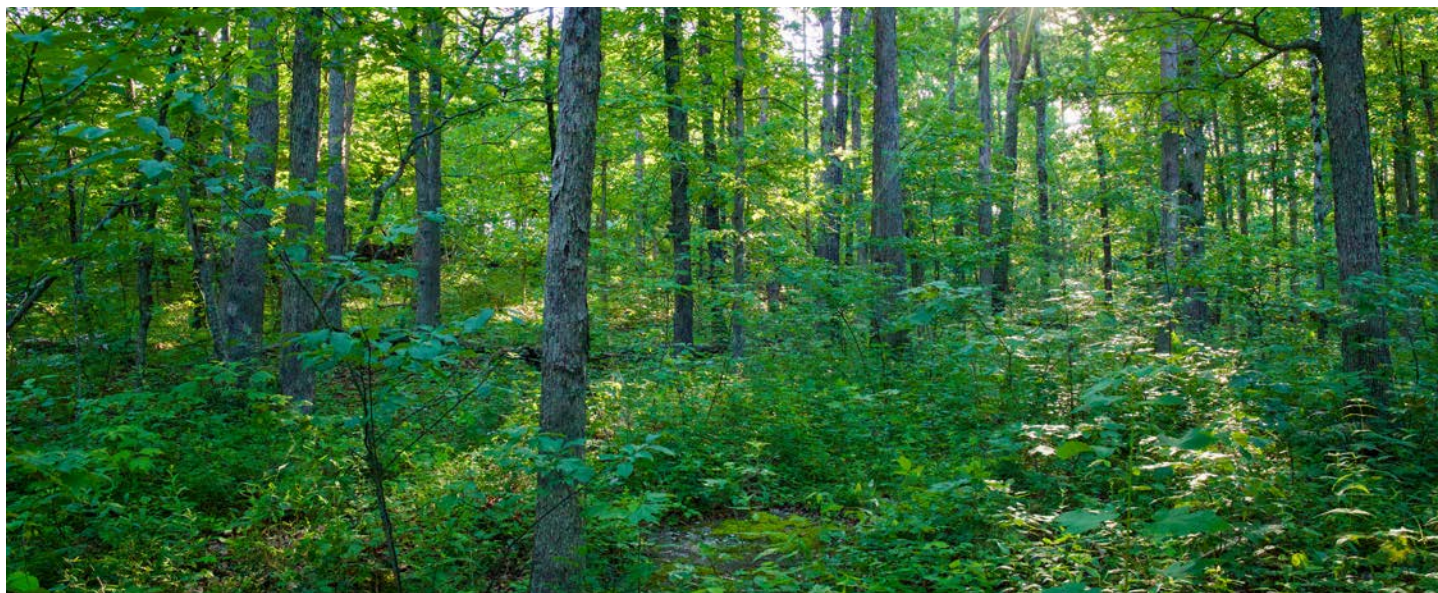
The land joins the Ozark National Forest along the southern boundary and touches it again on the northeast corner, giving you direct access to thousands of acres of public land. Just south of the property are impressive rock outcroppings and a seasonal waterfall that make a great spot for exploring, picnicking, or cooling off on a warm day.



# HUNTING OPPORTUNITIES

---

Located just south of the Buffalo and Little Buffalo Rivers, this property puts hunting, fishing, hiking, kayaking, and countless outdoor adventures right at your doorstep.



# TRAIL CAM PICTURES

---



# AERIAL MAP



Boundary Center: 35° 53' 19.27, -93° 13' 5.03

0ft 277ft 555ft

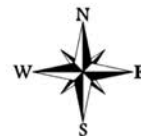


Maps Provided By:



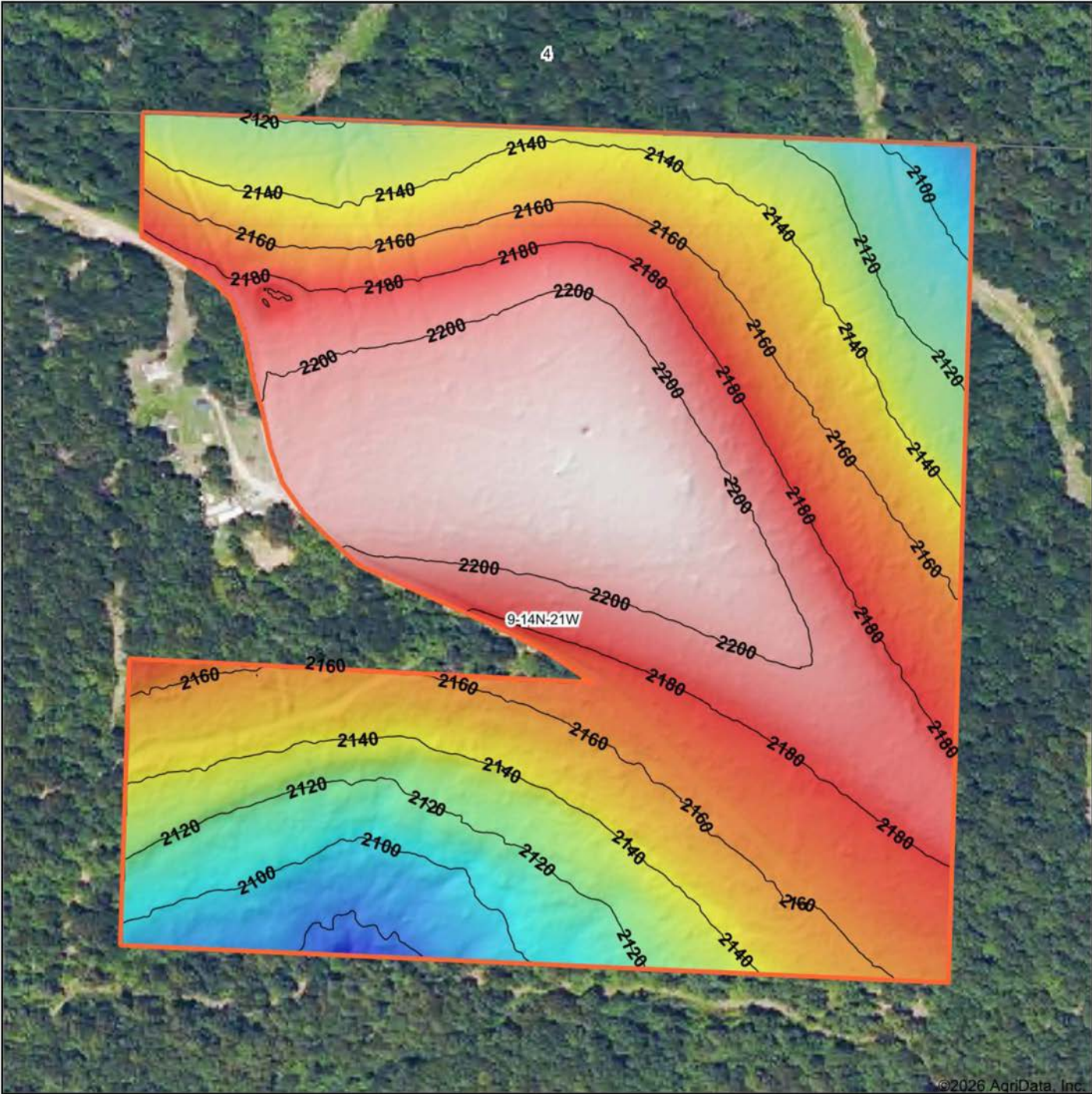
© AgriData, Inc. 2025 www.AgriDataInc.com

**9-14N-21W**  
**Newton County**  
**Arkansas**



6/12/2026

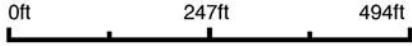
# HILLSHADE MAP



©2026 AgriData, Inc.



Source: USGS 1 meter dem  
 Interval(ft): 20  
 Min: 2,065.0  
 Max: 2,217.5  
 Range: 152.5  
 Average: 2,160.9  
 Standard Deviation: 35.37 ft



**9-14N-21W**  
**Newton County**  
**Arkansas**

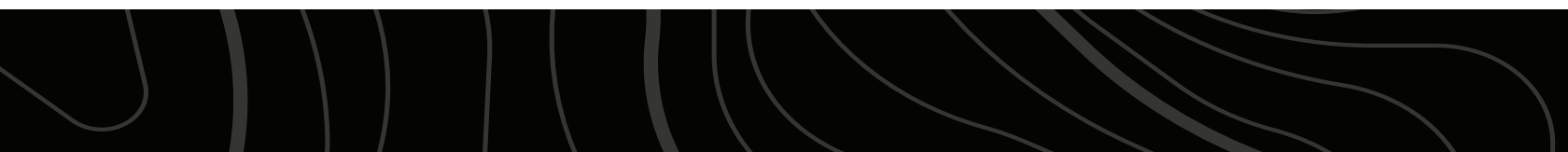
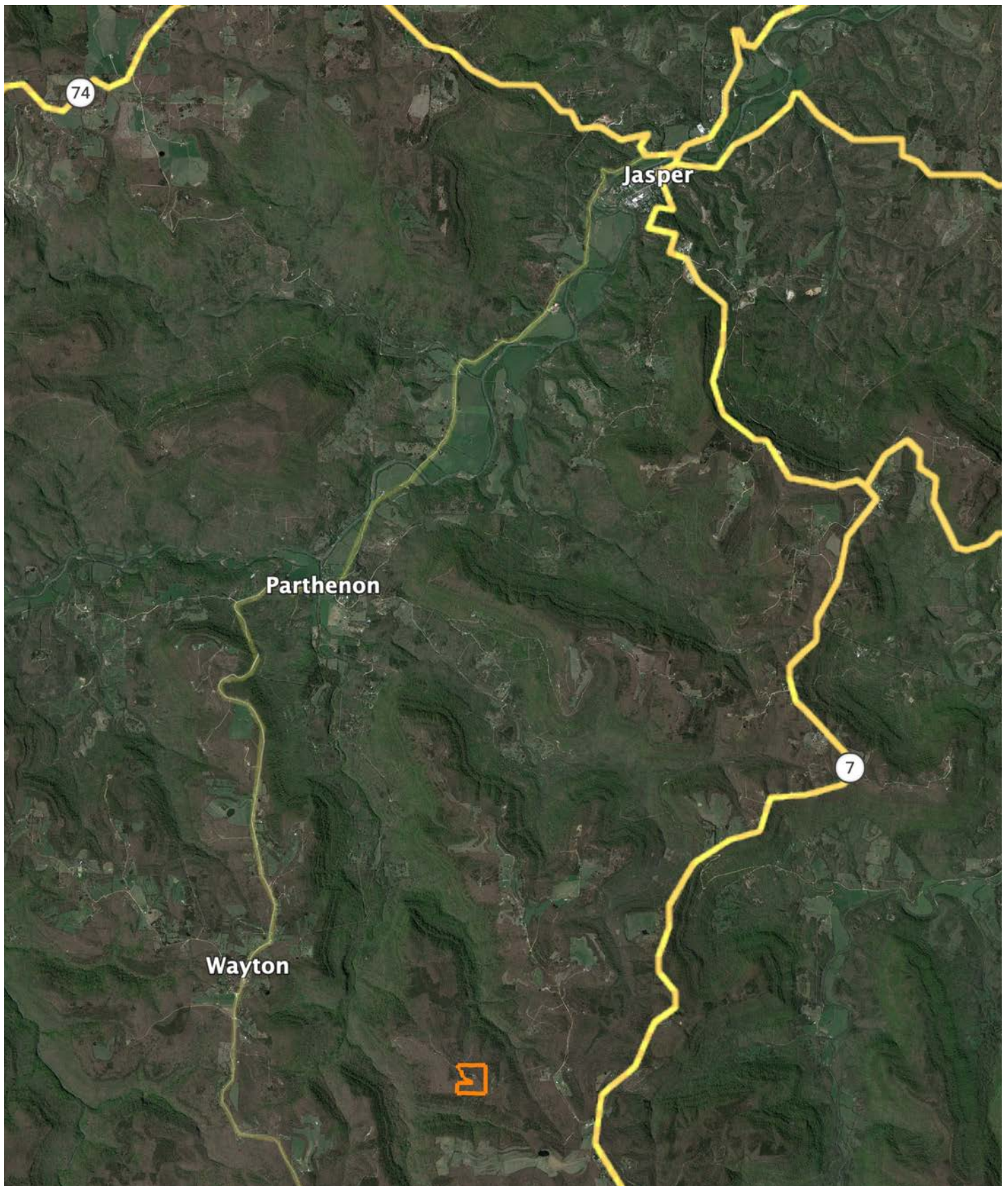
Boundary Center: 35° 53' 19.27, -93° 13' 5.03



Maps Provided By:  
**surety**  
 CUSTOMIZED ONLINE MAPPING  
 © AgriData, Inc. 2025 www.AgriDataInc.com

# OVERVIEW MAP

---



# AGENT CONTACT

Chris Shadrick, an esteemed land agent at Midwest Land Group, seamlessly merges family values with a profound understanding of land sales. Proudly calling Elkins, Arkansas, home alongside his lovely wife, Nikki, and their children, Payten, Axel, and Boone, Chris embodies integrity and dedication in serving his clients.

Hailing from Fayetteville, Arkansas, Chris's roots run deep within the region he passionately serves. His extensive background in automotive sales and management equips him with invaluable skills in relationship building and maintenance—skills cultivated from years of learning the true value of hard work.

Driven by his love for the outdoors and a desire to forge genuine connections with his clients, Chris's transition to land sales was a natural progression. His profound connection to the land stems from his passion for public land bowhunting, granting him unparalleled insights into wildlife behavior and terrain intricacies.

As an ordained minister and active member of New Beginnings Baptist Church, Chris exemplifies integrity and values in every client interaction. Choose Chris Shadrick as your trusted guide in your land journey, where unwavering family values, integrity, and expertise converge to transform your dreams into reality.



**CHRIS SHADRICK**

LAND AGENT

**479.487.1647**

[CShadrick@MidwestLandGroup.com](mailto:CShadrick@MidwestLandGroup.com)



**MidwestLandGroup.com**

This property is being offered by Midwest Land Group, LLC. 913.674.8010. All information provided by Midwest Land Group, LLC or their agents was acquired from sources deemed accurate and reliable, however we do not warrant its accuracy or completeness. Midwest Land Group, LLC assumes no liability for error, omission or investment results. Midwest Land Group, LLC. Licensed in Alabama, Arkansas, Illinois, Indiana, Iowa, Kansas, Kentucky, Louisiana, Minnesota, Mississippi, Missouri, Montana, Nebraska, North Dakota, Ohio, Oklahoma, South Dakota, Tennessee, Texas, Wisconsin, and Wyoming.