

MIDWEST LAND GROUP PRESENTS

.6 ACRES

MARATHON COUNTY, WI

2003 LIBERTY RIDGE WAY, WAUSAU, WI 54401



MidwestLandGroup.com

MIDWEST LAND GROUP IS HONORED TO PRESENT

CUSTOM 2019 PARADE HOME BY TIMBER RIVER IN WAUSAU, WISCONSIN

Move-in-ready executive home perched above Wausau in a prime location! This custom build was completed in 2019 by Timber River and was showcased in the Parade of Homes. The home is set in the exclusive Liberty Ridge subdivision and provides a large, private lot, a beautiful city view, exquisite landscaping, and easy access to highways and shopping. At 3,080 finished square feet, this home offers 5 bedrooms and 3.5 baths. The thoughtful floor plan provides ample natural light, clean aesthetic lines, and in-home privacy.

The exterior blends timeless craftsman-inspired design with a neutral, modern color palette. The property has easy-to-maintain landscaping featuring natural retaining walls. The main level has 10' ceilings and a pleasing blend of neutral colors throughout. The large tri-pane windows and uplit tray ceilings provide ample light. The fireplace in the living room is flanked by floor-to-ceiling stone that provides modern aesthetics. The welcoming foyer and central living room are flanked on each side by the master suite and 2 additional bedrooms, all with their own bath. The main level and tech-forward master suite has a huge walk-in closet with in-floor heat in the master bath. The U by Moen smart

shower system with customizable presets is a great feature of the master bath. The efficient kitchen has a large pantry and the matching, stainless Bosch appliances are all included. The kitchen has heat-resistant Dekton countertops, a large breakfast bar, and is an ideal space for entertaining. Gorgeous maple floors run through the main level.

The finished walkout lower level has 9' ceilings. An additional 2 bedrooms and a large bathroom are on the lower level. The lower level family room has a wet bar and fireplace. A newly installed custom infrared sauna, a large bonus room wired for a theater system, and ample storage are also in the lower level. The lower level has high-end luxury vinyl plank flooring that provides a modern sense of consistency in finishes. The home includes a high-end security system, whole-home water purification system, sprinkler system, and Aprilaire full home air quality system. Both levels have electric fireplaces. The spacious attached 3-car garage is finished and heated. The third stall of the garage is designed to fit a boat trailer. Midwest Land Group is proud to offer this gorgeous custom home in a prime Wausau location near the Aspirus Hospital.

PROPERTY FEATURES

COUNTY: **MARATHON** | STATE: **WISCONSIN** | ACRES: **.6**

- 5 bedrooms, 3.5 baths
- 3,080 finished square feet
- Custom design and custom build by Timber River
- 2019 Parade of Homes property
- .62 acre corner lot
- Bosch stainless appliances
- Infrared sauna, wet bar
- 10' ceilings in the main level, 9' ceilings in the lower level
- U by Moen smart shower system in the master bath
- Large attached, heated, and finished garage
- High-end home security system
- Outstanding location and large manicured yard



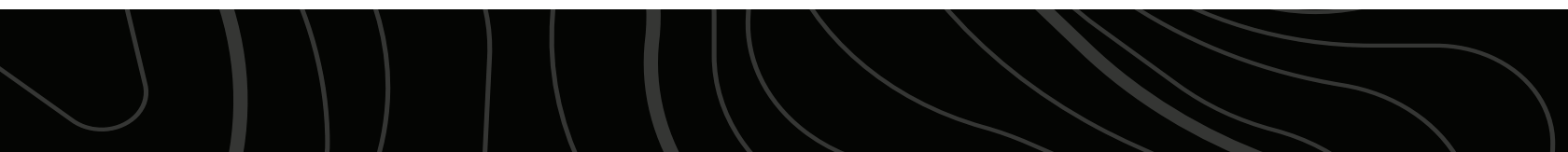
CUSTOM BUILD HOME

Move-in-ready executive home perched on an elevation above Wausau in a prime location! This custom build was completed in 2019 by Timber River and was showcased in the Parade of Homes.



MAIN LEVEL

The efficient kitchen has a large pantry and the matching, stainless Bosch appliances are all included. The kitchen has heat-resistant Dekton countertops, a large breakfast bar, and is an ideal space for entertaining. Gorgeous maple floors run through the main level.

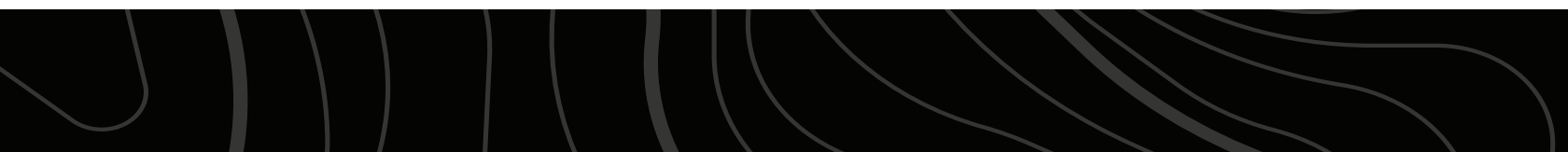


MASTER SUITE

The main level and tech-forward master suite has a huge walk-in closet with in-floor heat in the master bath. The U by Moen smart shower system with customizable presets is a great feature of the master bath.



ADDITIONAL BEDROOMS



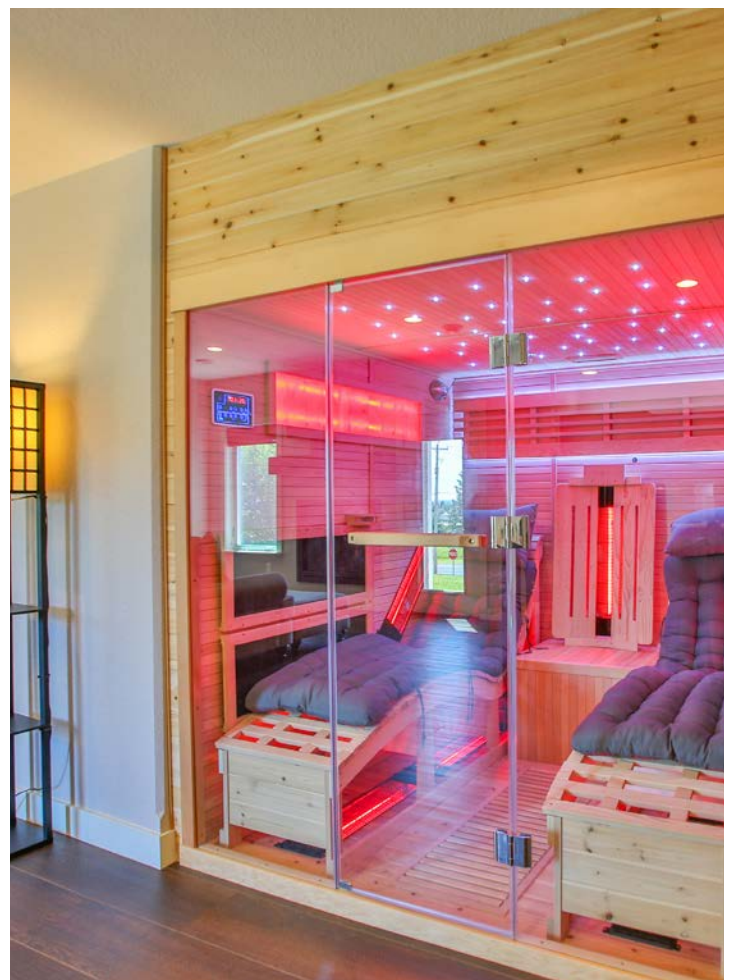
LOWER LEVEL



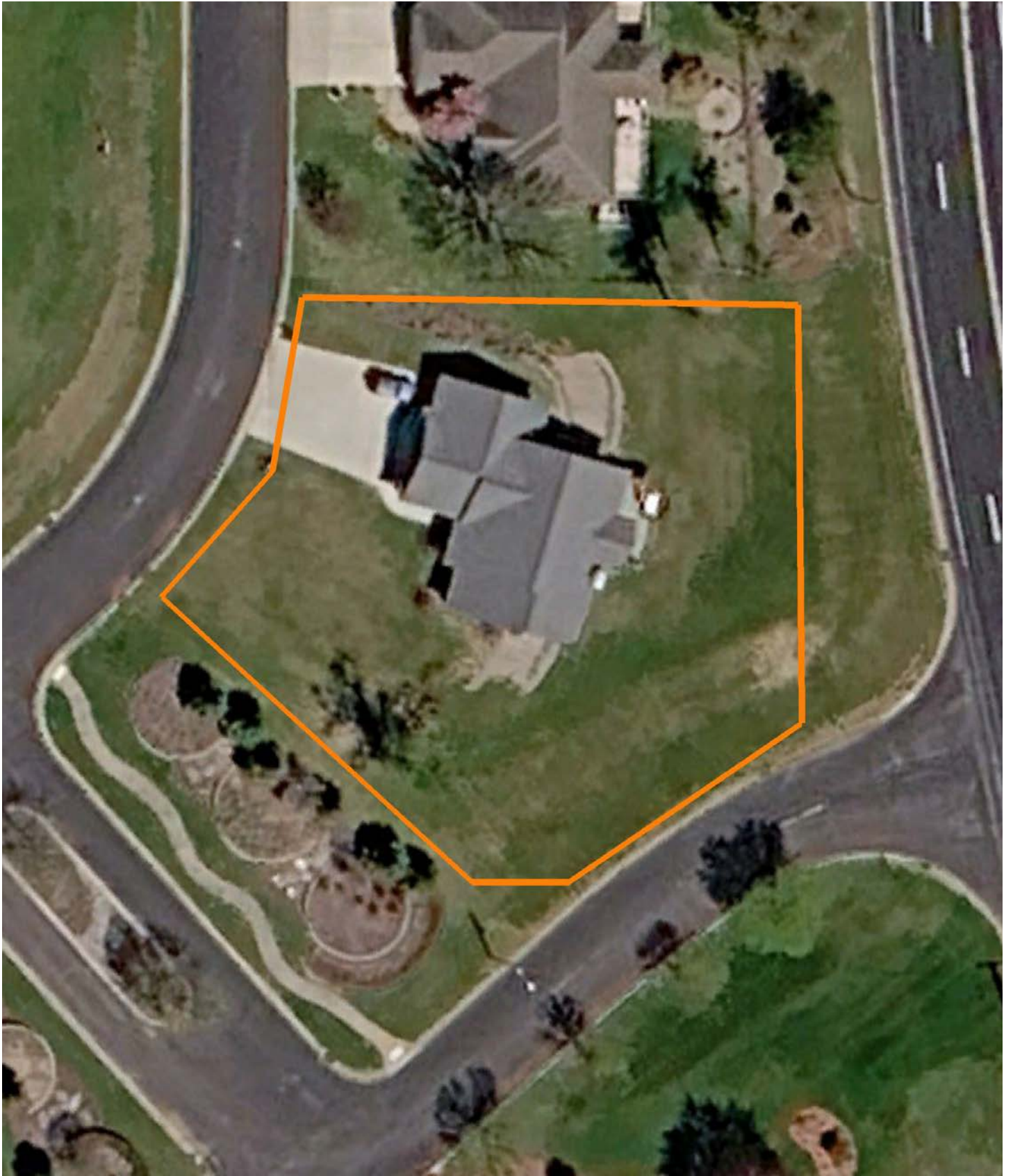
WET BAR



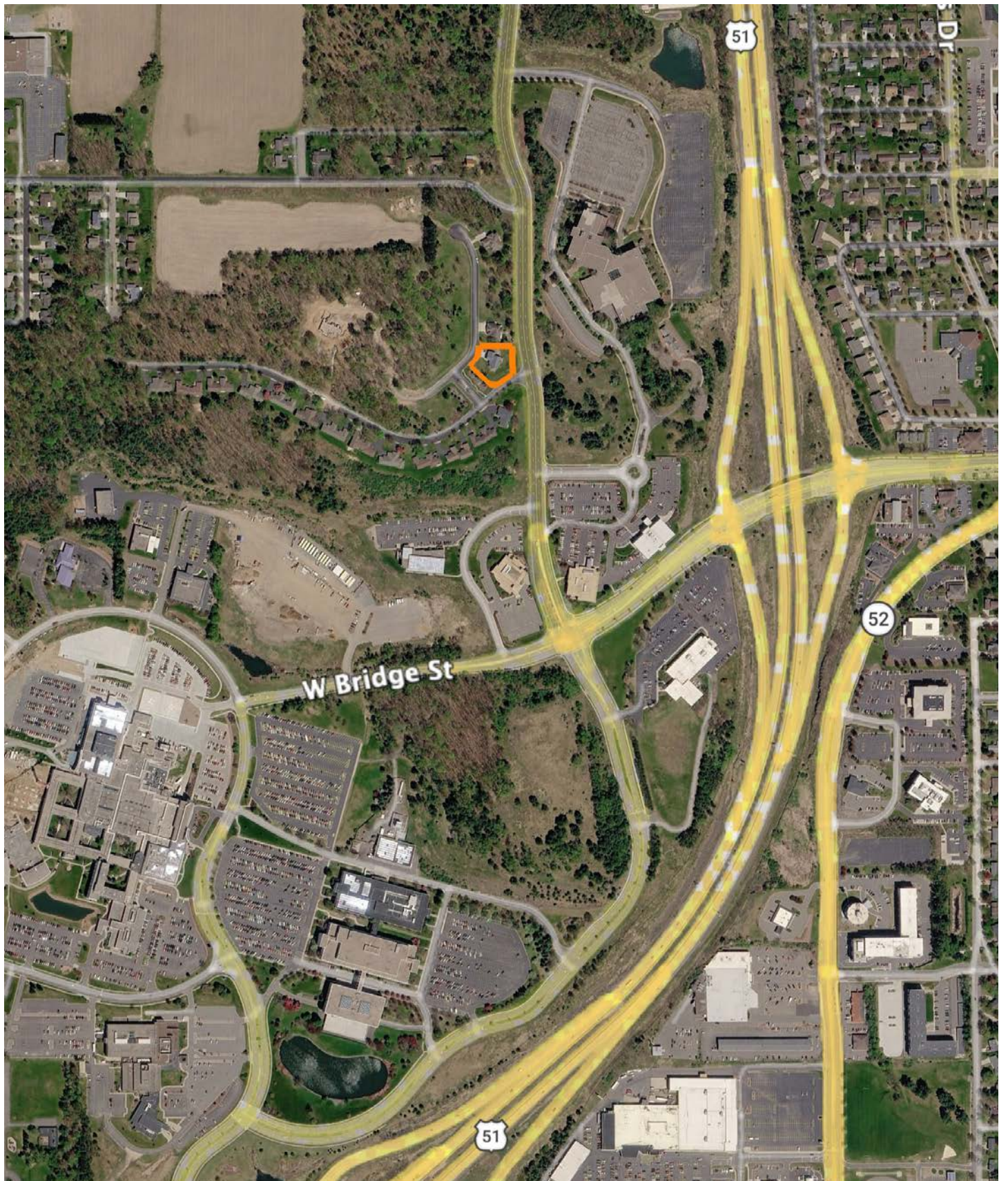
INFRARED SAUNA



AERIAL MAP



OVERVIEW MAP



AGENT CONTACT

Agent Matt Spets has a unique understanding of how the hunting and investment potentials of a parcel of land intertwine. A seasoned land investor and acknowledged whitetail hunting expert, Matt has successfully hunted in various states, gaining deep insights into whitetail deer behavior and how it relates to a given property. With his extensive network throughout Wisconsin, he can connect effortlessly with buyers and sellers, leveraging his expertise to help them achieve their real estate goals.

Born and raised in Ironwood, Michigan, Matt brings over 13 years of experience in educational leadership to his role. During his tenure, he spearheaded numerous financial, construction, and real estate projects, bolstering his school districts' financial standing and fostering relationships with local business leaders. In addition to being a youth baseball coach and serving on the Everest Youth Baseball board, Matt owns and operates Northwoods Baseball Select and is a member of the Everest Wrestling Club board.

Matt is also the founder of the Black River Trout Tournament conservation effort and serves as an advisor to the D.C. Everest Educational Foundation. His personal interests include hunting whitetails, fly fishing, skiing, and residential construction. Notably, in 2019, Matt and a partner ranked 7th overall in the Quest Hunt contest in Wisconsin, where he also won the Big Buck award using archery alone.

Matt resides in Wausau, WI, with his wife Sabrina, their daughter Danika, and sons Sawyer and Grady. His blend of hunting expertise, investment know-how, and broad connections make him a trusted and approachable ally for any real estate needs in Wisconsin.



MATT SPETS,
LAND AGENT
715.393.8387
MSpets@MidwestLandGroup.com



MidwestLandGroup.com

This property is being offered by Midwest Land Group, LLC. 913.674.8010. All information provided by Midwest Land Group, LLC or their agents was acquired from sources deemed accurate and reliable, however we do not warrant its accuracy or completeness. Midwest Land Group, LLC assumes no liability for error, omission or investment results. Midwest Land Group, LLC. Licensed in Alabama, Arkansas, Illinois, Indiana, Iowa, Kansas, Kentucky, Louisiana, Minnesota, Mississippi, Missouri, Montana, Nebraska, North Dakota, Ohio, Oklahoma, South Dakota, Tennessee, Texas, Wisconsin, and Wyoming.