

MIDWEST LAND GROUP PRESENTS



LAFAYETTE COUNTY, MO

15.41 ACRES



MidwestLandGroup.com

MIDWEST LAND GROUP IS HONORED TO PRESENT

WELCOME TO YOUR PRIVATE COUNTRY ESTATE ON 15.41 +/- ACRES IN LAFAYETTE COUNTY, MISSOURI

Experience the perfect blend of luxury living, recreation, and privacy with this stunning custom-built reverse 1.5-story home situated on 15.41 +/- picturesque acres just 20 minutes from the Kansas City Metro. Located on blacktop and set well off the road, this remarkable property offers peaceful seclusion without sacrificing convenience.

Surrounded by a beautiful mix of open ground and approximately 5 acres of mature timber, the property is a wildlife enthusiast's dream. A scenic creek winds through the woods, attracting abundant deer and turkey while creating the perfect backdrop for exploring, hunting, or simply enjoying nature.

Boasting approximately 3,760 square feet, this exceptional home features 4 bedrooms, 3.5 bathrooms, and high-end finishes throughout. From the moment you enter, you'll be impressed by the grand entrance, soaring vaulted ceilings, exposed timber beams, and expansive Anderson windows that flood the home with natural light and seamlessly connect the indoors with the breathtaking outdoor setting.

The heart of the home is the spectacular great room featuring a massive stone fireplace and an impressive sliding wall door system that opens completely to the covered outdoor living area. Here you'll find a second stone fireplace, mounted television, and spacious seating area overlooking the backyard. Thoughtfully designed with resort-style outdoor living in mind, the backyard is perfectly positioned for a future pool and entertainment area. Electrical wiring for the pool has already been installed, and preliminary design renderings and plans are available upon request, providing the next owner with a head start on creating their dream outdoor oasis.

The chef's kitchen is equally impressive with an oversized hidden walk-in pantry featuring a discreet entrance from the kitchen as well as a convenient access door from the garage for unloading groceries.

The luxurious primary suite serves as a private retreat, offering a spa-inspired bathroom complete with a beautiful walk-in shower, separate soaking tub, oversized walk-in closet, and direct access to the main-level laundry room. A second bedroom is also located on the main level, while the finished walkout lower level features two additional bedrooms, a second laundry area, and a dedicated pool bath with exterior access, allowing guests to come and go without tracking through the entertainment space.

Outside, recreation opportunities are endless. Enjoy the professionally lighted pickleball, basketball, and volleyball court, creating the ultimate gathering place for family and friends. Combined with the planned pool area and expansive outdoor living spaces, this property was designed for entertaining on a grand scale.

The improvements continue with a 30'x40' insulated shop featuring 16-foot RV doors, a 10'x40' enclosed lean-to for equipment storage, and a fully finished 14'x30' heated and cooled kennel facility complete with concrete floors and bathroom.

A second finished outbuilding offers incredible flexibility with two bedrooms, a bathroom, kitchen area, and laundry. Whether used as a guest house, home office, business headquarters, fitness center, or multi-generational living space, the possibilities are endless.

From the breathtaking sunsets viewed from the covered deck to the unmatched privacy, wildlife, recreation, and luxury amenities, this one-of-a-kind property truly offers the ultimate country lifestyle. Rarely does an estate of this caliber become available—where peace, quiet, and wide-open spaces meet upscale living just minutes from the city.

Luxury. Privacy. Recreation. Lifestyle. This is the property you've been waiting for.

PROPERTY FEATURES

COUNTY: **LAFAYETTE** | STATE: **MISSOURI** | ACRES: **15.41**

- 15.41 +/- acres of picturesque countryside in Lafayette County, Missouri
- Custom-built reverse 1.5-story home with approximately 3,760 +/- square feet
- Only 20 minutes from the Kansas City Metro with easy blacktop access
- 4 bedrooms and 3.5 bathrooms with an ideal layout for family and guests
- Finished walkout basement designed for entertaining and recreation
- Grand entry, vaulted ceilings, and exposed timber beams creating a striking first impression
- Expansive Andersen windows showcasing panoramic views and abundant natural light
- Spectacular great room featuring a massive stone fireplace
- Oversized multi-panel sliding doors that open completely to the covered outdoor living space
- Covered outdoor entertainment area with a second stone fireplace and mounted television
- Future pool-ready backyard with electrical wiring already installed
- Preliminary pool and outdoor living area plans available to help bring the vision to life
- Chef's kitchen with oversized hidden walk-in pantry and garage access
- Luxury primary suite with spa-inspired bath, soaking tub, oversized closet, and laundry access
- Dedicated pool bath with exterior access from the walkout lower level
- Professionally lighted pickleball, basketball, and volleyball court
- Approximately 5 acres of mature timber loaded with deer and turkey
- Scenic creek winding through the wooded acreage
- 30'x40' insulated shop, heated & cooled with 16-foot RV doors, full bath.
- 14'x30' heated and cooled dog kennel area
- 10'x40' enclosed lean-to for equipment storage
- Finished guest house/outbuilding with 2 bedrooms, bathroom, kitchen area, and laundry—ideal for guests, business/office use or fitness gym.



15.41 +/- ACRES PICTURESQUE COUNTRYSIDE



3,760 +/- SQUARE FEET HOME



4 BEDROOMS AND 3.5 BATHROOMS



COVERED OUTDOOR ENTERTAINMENT



30'X40' INSULATED SHOP

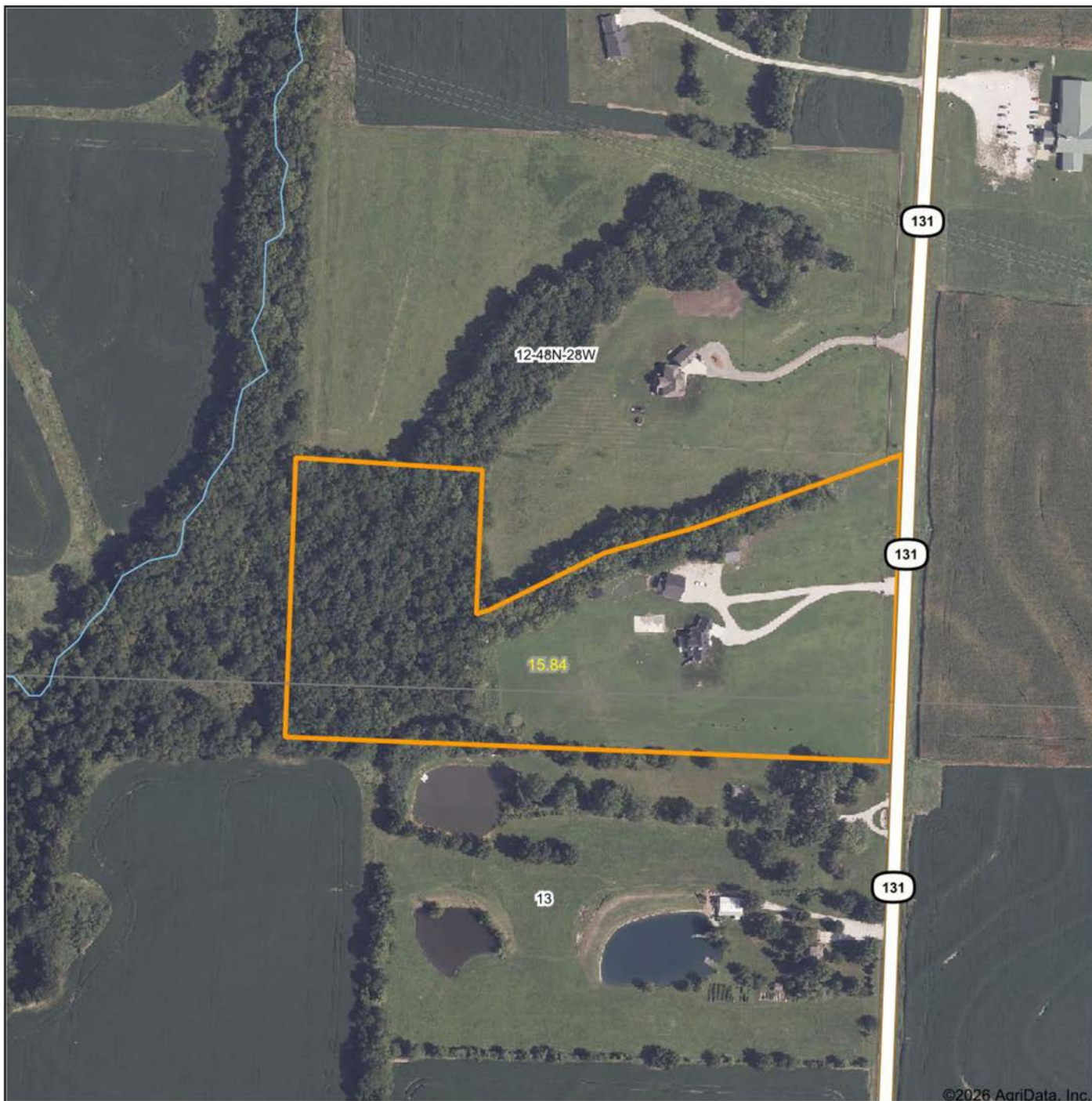


PROFESSIONALLY LIGHTED COURT

Outside, recreation opportunities are endless. Enjoy the professionally lighted pickleball, basketball, and volleyball court, creating the ultimate gathering place for family and friends. Combined with the planned pool area and expansive outdoor living spaces, this property was designed for entertaining on a grand scale.



AERIAL MAP



©2026 AgriData, Inc.

Boundary Center: 38° 58' 18.94, -93° 57' 21.46

0ft 340ft 681ft



Maps Provided By:



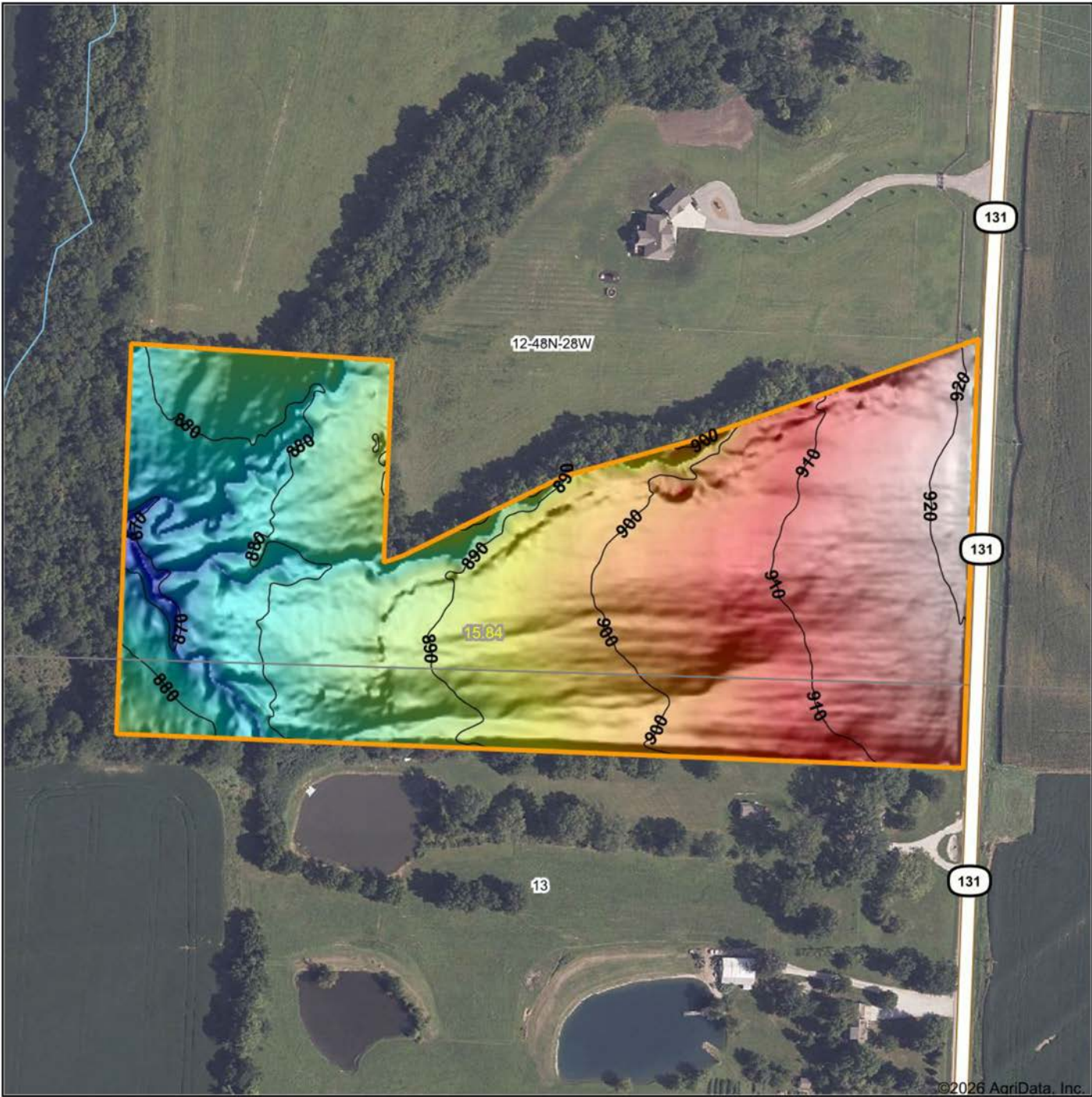
© AgriData, Inc. 2025 www.AgriDataInc.com

12-48N-28W
Lafayette County
Missouri



6/5/2026

HILLSHADE MAP



©2026 AgriData, Inc.



Maps Provided By:
surety
 CUSTOMIZED ONLINE MAPPING
 © AgriData, Inc. 2025 www.AgriDataInc.com

Source: USGS 1 meter dem
 Interval(ft): 10
 Min: 863.9
 Max: 922.8
 Range: 58.9
 Average: 896.0
 Standard Deviation: 14.34 ft

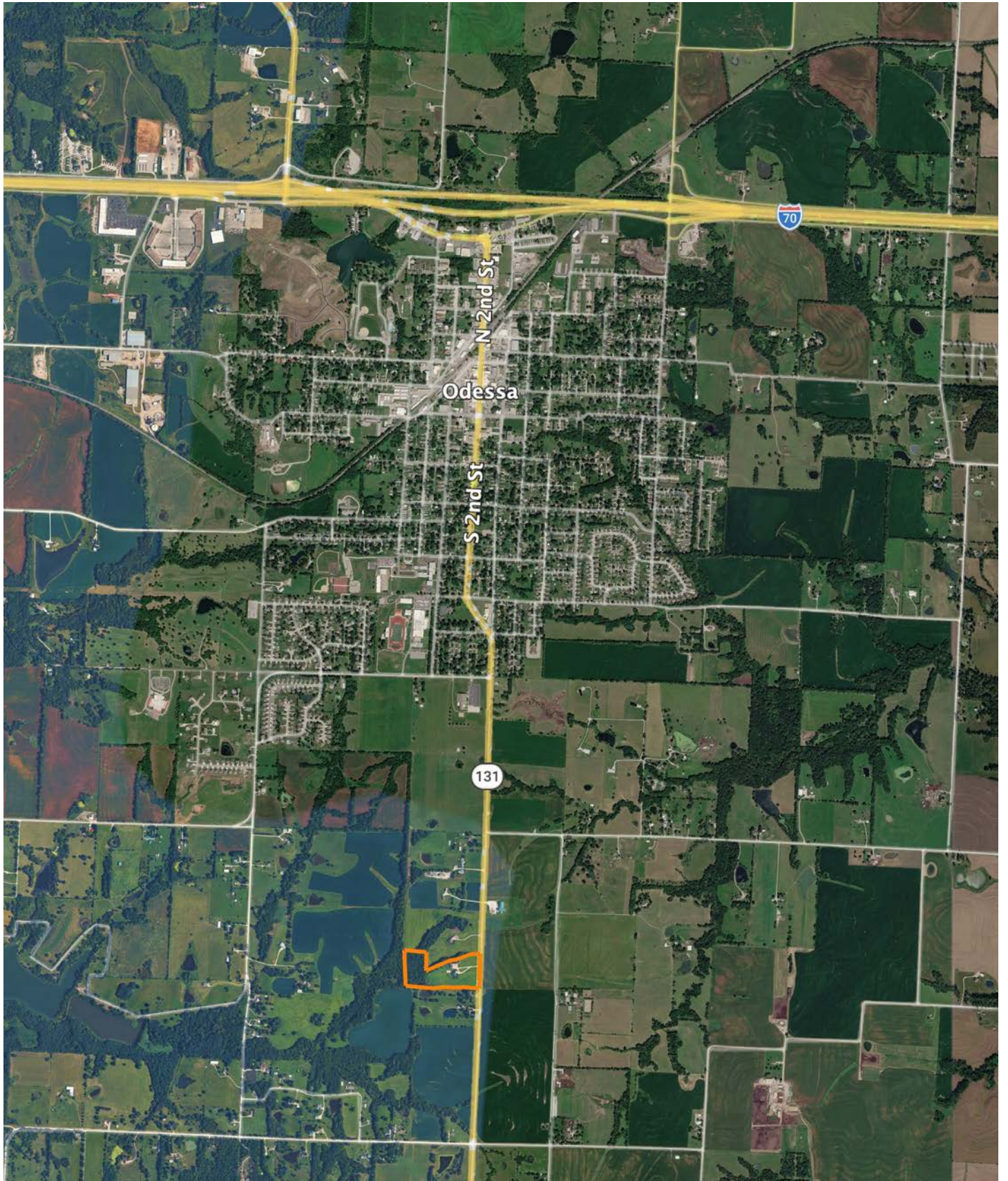


6/5/2026

12-48N-28W
Lafayette County
Missouri

Boundary Center: 38° 58' 18.94, -93° 57' 21.46

OVERVIEW MAP



AGENT CONTACT

Scott's passion for the outdoors is fueled by whitetail, turkey and waterfowl. A member of various duck clubs for over 25 years, Scott has extensive waterfowl knowledge and wetland management skills. When he's not hunting, you can find Scott on the water - fly fishing or tournament bass fishing.

Born in Kansas City, Missouri, Scott graduated from Lee's Summit High School, and went on to earn a degree in Speech Communication from the University of Missouri. Prior to joining Midwest Land Group, he built a career in medical sales serving hospitals, outpatient clinics and ambulatory surgery centers, and earned the President's Club award on multiple occasions. This experience led this agent to become detail-oriented, solutions-driven, and proficient in managing large and complicated business deals, which comes in handy as a land agent.

Scott is an active member of Our Lady of the Presentation church and school; a member of Ducks Unlimited, Delta Waterfowl, the National Wild Turkey Federation, and Lakewood Bass Fishing Club; and is also a coach for the Lee's Summit Softball Association. He and his wife, Stacie, enjoy cheering on their daughters, Ava and Lyla, who keep them busy with sports and activities.



SCOTT VENTIMIGLIA, LAND AGENT
816.695.4294
SVentimiglia@MidwestLandGroup.com



MidwestLandGroup.com

This property is being offered by Midwest Land Group, LLC. 913.674.8010. All information provided by Midwest Land Group, LLC or their agents was acquired from sources deemed accurate and reliable, however we do not warrant its accuracy or completeness. Midwest Land Group, LLC assumes no liability for error, omission or investment results. Midwest Land Group, LLC. Licensed in Alabama, Arkansas, Illinois, Indiana, Iowa, Kansas, Kentucky, Louisiana, Minnesota, Mississippi, Missouri, Montana, Nebraska, North Dakota, Ohio, Oklahoma, South Dakota, Tennessee, Texas, Wisconsin, and Wyoming.