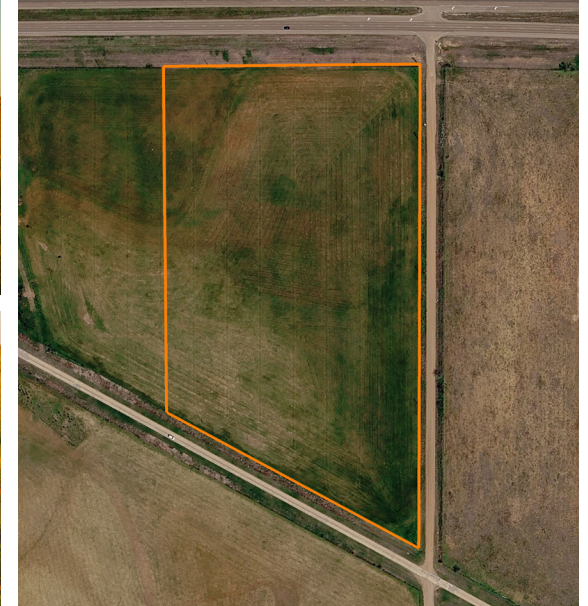


LAND FOR SALE

# 16.2 +/- ACRE HOMESITE BETWEEN LAWTON & ALTUS WITH WICHITA MOUNTAIN VIEWS

COUNTY: **KIOWA**  
STATE: **OKLAHOMA**  
ACRES: **16.2**



## PROPERTY FEATURES

- Bordered by US Highway 62 on the north side for convenient year-round access
- Additional road frontage along 62B on the south boundary
- Beautiful panoramic views of the Wichita Mountains to the north
- Level terrain offers an ideal building site for your dream home, barndominium, or rural retreat
- Rural water district membership available, adding convenience for future development
- Fenced on three sides, helping define property boundaries and reducing initial fencing costs
- Open layout provides flexibility for residential, agricultural, recreational, or investment use

For more information, contact:

**MICHAEL AYERS**, Land Agent

**580.682.0026** | [MAyers@MidwestLandGroup.com](mailto:MAyers@MidwestLandGroup.com)

**MidwestLandGroup.com**

This property is being offered by Midwest Land Group, LLC, 7111 W. 151st Street, Ste. 27, Overland Park, KS 66223, 913.674.8010. Licensed in AL, AR, IA, IL, IN, KS, KY, LA, MN, MO, MS, MT, NE, OH, OK, SD, TN, TX, WI, and WY.

