

MIDWEST LAND GROUP PRESENTS

6.4 ACRES IN

---

# JOHNSON COUNTY ARKANSAS



[MidwestLandGroup.com](http://MidwestLandGroup.com)

MIDWEST LAND GROUP IS HONORED TO PRESENT

# 2,700 SQUARE FOOT HOME ON 6.4 +/- ACRES NORTH OF CLARKSVILLE

Located approximately 3 miles north of Clarksville on County Road 3348, this 2,700-square-foot residence sits on 6.4 scenic acres. The home features 3 bedrooms and 2.5 bathrooms, anchored by a spacious kitchen and dining area and a large living room with a fireplace. Vaulted ceilings enhance the interior's sense of space. The fully finished walkout basement includes one bedroom with a full bath and the laundry room, while the central basement area provides a versatile space suitable for a den or game room.

Constructed with a durable metal roof, brick, and wood siding, the home's exterior is designed for longevity. A spacious deck provides a perfect venue for entertaining while overlooking the property's expansive landscape of mature hardwoods. Additionally, the grounds feature a detached two-car garage, a carport, and a 24'x24' shop, all of which are accessible via a paved driveway.



# PROPERTY FEATURES

COUNTY: **JOHNSON** | STATE: **ARKANSAS** | ACRES: **6.4**

- Large kitchen
- Vaulted ceilings
- Large deck
- Walkout basement
- 24'x24' shop
- 2-car garage
- 3-bedroom
- 2 ½ bath
- Large hardwoods
- 3 miles to downtown Clarksville



# 6.4 +/- ACRES

---



# 2,700 SQUARE FOOT HOME



# LARGE DECK



# 24'X24' SHOP



# 2-CAR GARAGE

---



# ADDITIONAL PHOTOS



# TOPOGRAPHY MAP



©2026 AgriData, Inc.



Maps Provided By:  
**surety**  
 CUSTOMIZED ONLINE MAPPING  
 © AgriData, Inc. 2025 www.AgrIDataInc.com

Source: USGS 1 meter dem  
 Interval(ft): 10.0  
 Min: 576.5  
 Max: 659.9  
 Range: 83.4  
 Average: 624.3  
 Standard Deviation: 16.14 ft

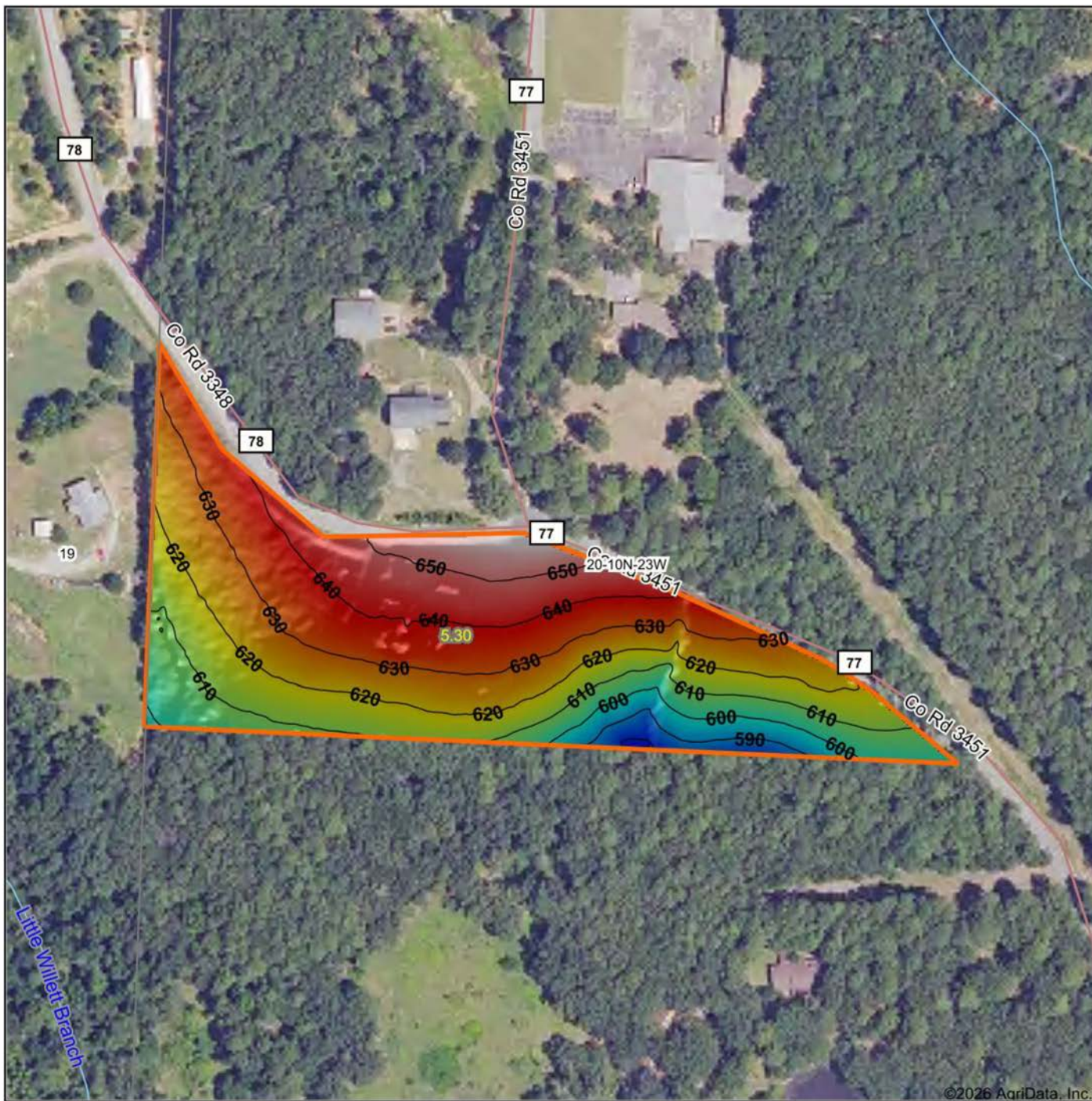


6/3/2026

**20-10N-23W**  
**Johnson County**  
**Arkansas**

Boundary Center: 35° 30' 33.83, -93° 28' 17.41

# HILLSHADE MAP



Low Elevation High



Maps Provided By:



© AgriData, Inc. 2025 www.AgriDataInc.com

Source: USGS 1 meter dem

Interval(ft): 10

Min: 576.5

Max: 659.9

Range: 83.4

Average: 624.3

Standard Deviation: 16.14 ft

0ft 199ft 398ft

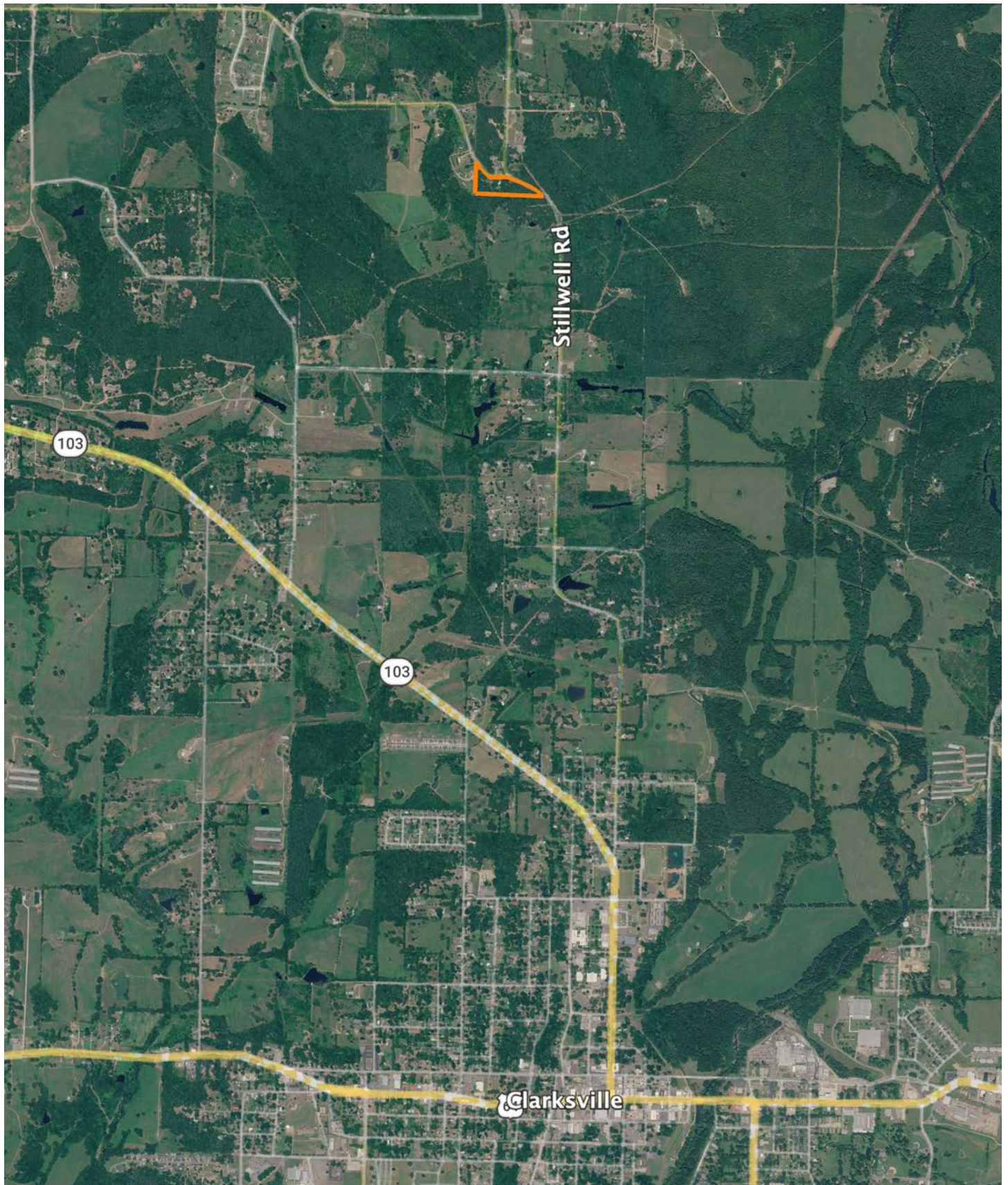


6/3/2026

**20-10N-23W**  
**Johnson County**  
**Arkansas**

Boundary Center: 35° 30' 33.83, -93° 28' 17.41

# OVERVIEW MAP



# AGENT CONTACT

Born in Paris and raised in Scranton, Arkansas, Michael Joe Johnson has spent his entire life connected to the land, the people, and the rural way of life that defines West Central Arkansas. Growing up on a small farm and later discovering his passion for whitetail and turkey hunting in the early 2000s, Michael Joe developed an appreciation for land not only for its value, but for the memories, opportunities, and legacy it provides.

Michael Joe's journey into land sales began from the other side of the table - when he purchased his own farm through Midwest Land Group in 2020. The professionalism, communication, and continued follow-up he received made a lasting impression, inspiring him to help others experience that same level of service. As a former business owner who operated Johnson Industrial Coatings across five states for more than a decade, he understands client expectations, large-scale projects, and the importance of clear and dependable communication.

Whether advising on setting up bare farms for hunting or guiding first-time land buyers through a major investment, Michael Joe brings empathy and firsthand experience to every conversation. A former school board member for four years, a devout Christian, and member of American Legion Post 258, he is proud to serve the region he calls home with honesty, work ethic, and the ability to find common ground with just about anyone.

When you're ready to buy or sell rural property in West Central Arkansas, Michael Joe Johnson is ready to help every step of the way.



**MICHAEL JOE JOHNSON**, LAND AGENT

**479.449.2227**

[MJohnson@MidwestLandGroup.com](mailto:MJohnson@MidwestLandGroup.com)



**MidwestLandGroup.com**

This property is being offered by Midwest Land Group, LLC. 913.674.8010. All information provided by Midwest Land Group, LLC or their agents was acquired from sources deemed accurate and reliable, however we do not warrant its accuracy or completeness. Midwest Land Group, LLC assumes no liability for error, omission or investment results. Midwest Land Group, LLC. Licensed in Alabama, Arkansas, Illinois, Indiana, Iowa, Kansas, Kentucky, Louisiana, Minnesota, Mississippi, Missouri, Montana, Nebraska, North Dakota, Ohio, Oklahoma, South Dakota, Tennessee, Texas, Wisconsin, and Wyoming.