

MIDWEST LAND GROUP PRESENTS

.2 ACRES

# GREENE COUNTY, MO

420 BEAVERTAIL ROAD, ASH GROVE, MISSOURI 65604



[MidwestLandGroup.com](http://MidwestLandGroup.com)

MIDWEST LAND GROUP IS HONORED TO PRESENT

# NEW CONSTRUCTION WITHOUT THE BIG-CITY PRICE TAG, GREENE COUNTY

Welcome to 420 Beavertail Road in Creekside Meadows, Ash Grove's newest subdivision. This brand-new 3 bedroom, 2 bath home offers 1,546 square feet with a warm, inviting feel featuring stained wood cabinets, granite countertops, and an open-concept layout.

The kitchen is designed for gathering, with a walk-in pantry, an island with seating, and an easy flow into the living room. Large windows fill the main living area with natural light, creating a bright and comfortable space to enjoy every day. The split-bedroom floor plan offers

added privacy, while the primary suite features a tray ceiling, a walk-in closet, and a tiled walk-in shower. The second bedroom has a vaulted ceiling, and the third bedroom offers views of the backyard.

Enjoy both a covered front porch and a back patio, giving you plenty of space to relax outdoors. Located in a growing new neighborhood with light subdivision restrictions, this is a great opportunity to own a quality new construction home without the "big city" price tag.



## PROPERTY FEATURES

COUNTY: **GREENE** | STATE: **MISSOURI** | ACRES: **.2**

- Brand new subdivision
- New construction home
- 3 bedroom and 2 bathroom
- 2-car garage
- Split floor plan
- Granite countertops
- Stained wood cabinets
- Walk-in pantry
- Large walk-in master closet
- Open concept living space
- City utilities, natural gas, and fiber optic internet
- Ash Grove School District

# NEW CONSTRUCTION HOME

---

This brand-new 3 bedroom, 2 bath home offers 1,546 square feet with a warm, inviting feel featuring a covered front porch and a back patio, giving you plenty of space to relax outdoors.



# OPEN CONCEPT LIVING SPACE

---



# GRANITE COUNTERTOPS & WALK-IN PANTRY

---



# AERIAL MAP



©2026 AgriData, Inc.

Boundary Center: 37° 19' 22.66, -93° 35' 36.36



Maps Provided By:



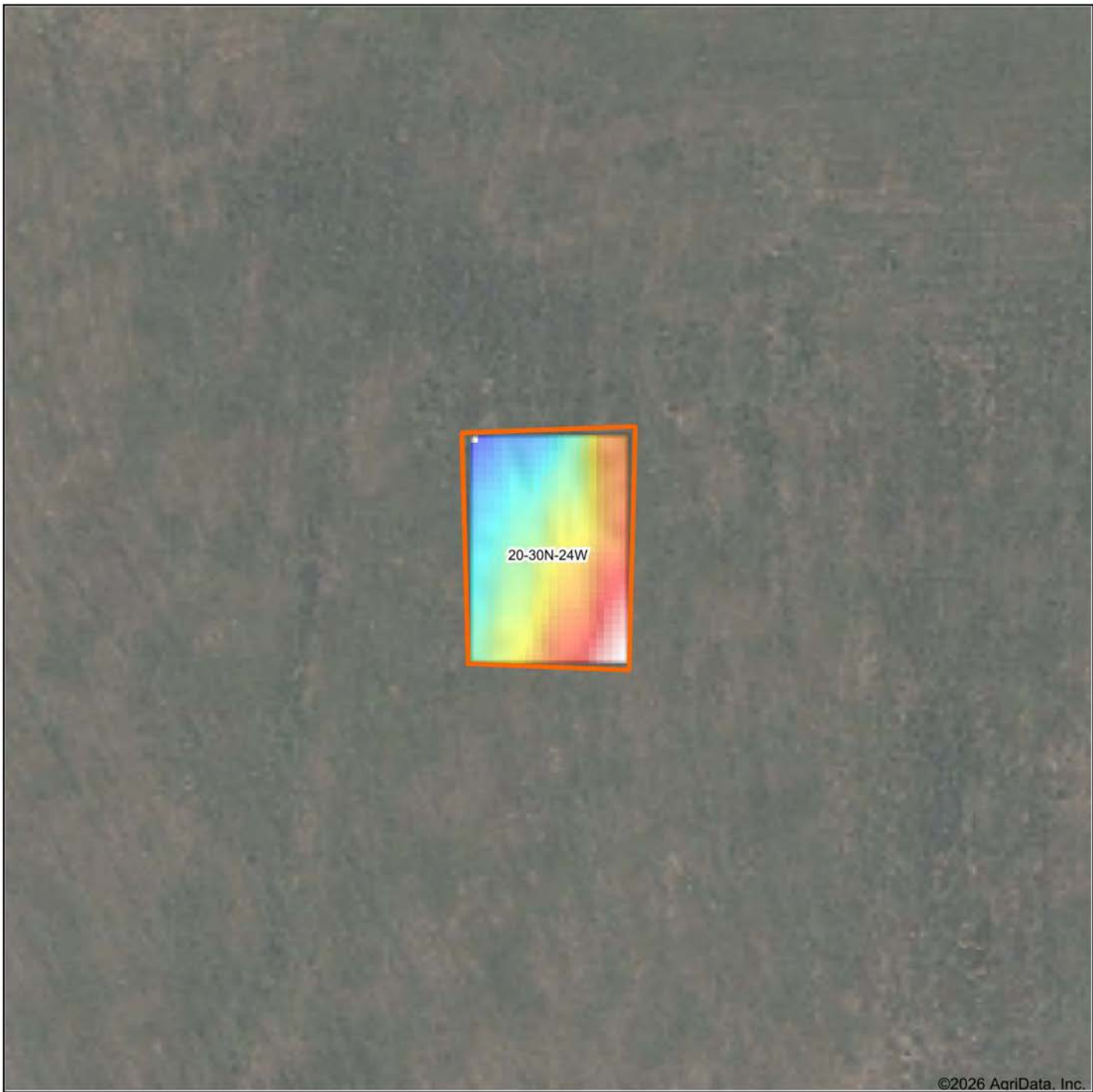
© AgriData, Inc. 2025 www.AgriDataInc.com

**20-30N-24W**  
**Greene County**  
**Missouri**



6/4/2026

# HILLSHADE MAP

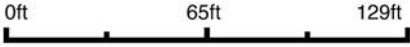


©2026 AgriData, Inc.



Maps Provided By:  
**surety**  
CUSTOMIZED ONLINE MAPPING  
© AgriData, Inc. 2025 www.AgriDataInc.com

Source: USGS 1 meter dem  
Interval(ft): 20  
Min: 1,020.4  
Max: 1,023.3  
Range: 2.9  
Average: 1,021.8  
Standard Deviation: 0.59 ft



6/4/2026

**20-30N-24W**  
**Greene County**  
**Missouri**

Boundary Center: 37° 19' 22.66, -93° 35' 36.36

# OVERVIEW MAP



# AGENT CONTACT

Amber Miller, a Missouri native, brings a wealth of experience and passion to Midwest Land Group. Hailing from Springfield and now residing in Long Lane, Missouri, with her husband Logan, and their sons, Case and Cole, Amber's roots run deep in the region she serves, particularly in Southwest Missouri. Her educational background in Agriculture Business from Missouri State University, coupled with a minor in Finance and Marketing, equips her with a solid foundation for navigating the complexities of real estate transactions.

Amber earned her real estate license in 2018, showcasing her unwavering commitment to excellence in the industry. Amber's journey into land sales is deeply personal, rooted in her upbringing on a small farm in Dade County. From hunting to antique shopping and sourdough baking, she embodies the essence of rural living. Her active involvement in community organizations like Pisgah Baptist Church, Dallas County Elementary School PTO, and Buffalo Women's Professional Development group underscores her commitment to serving others beyond real estate transactions.

What sets Amber apart is her genuine passion for real estate and her unwavering dedication to her clients. Whether it's leveraging her deep understanding of land management or going the extra mile to exceed expectations, Amber's clients trust her to guide them through their land journey with integrity and expertise. With her husband Logan also on board at Midwest Land Group, the Millers offer a dynamic duo poised to deliver unparalleled service and results in land sales across Southwest Missouri.



## AMBER MILLER

LAND AGENT

**417.322.6995**

AMiller@MidwestLandGroup.com



## MidwestLandGroup.com

This property is being offered by Midwest Land Group, LLC. 913.674.8010. All information provided by Midwest Land Group, LLC or their agents was acquired from sources deemed accurate and reliable, however we do not warrant its accuracy or completeness. Midwest Land Group, LLC assumes no liability for error, omission or investment results. Midwest Land Group, LLC. Licensed in Alabama, Arkansas, Illinois, Indiana, Iowa, Kansas, Kentucky, Louisiana, Minnesota, Mississippi, Missouri, Montana, Nebraska, North Dakota, Ohio, Oklahoma, South Dakota, Tennessee, Texas, Wisconsin, and Wyoming.