

MIDWEST LAND GROUP PRESENTS

27.27 ACRES IN

---

# FAYETTE COUNTY ALABAMA



[MidwestLandGroup.com](http://MidwestLandGroup.com)

MIDWEST LAND GROUP IS HONORED TO PRESENT

# 27.27 +/- SURVEYED ACRES ON AL-159 - IDEAL HOMESITE OPPORTUNITY

Located in a desirable rural setting with convenient access to several West Alabama communities, this 27.27 +/- surveyed acre tract offers an excellent opportunity for those seeking a homesite with room to enjoy the outdoors. With frontage along AL-159 and access to nearby utilities, the property is well-positioned for future residential development while maintaining the privacy and charm of country living.

The tract features a beautiful stand of pine timber and a year-round creek that enhances both the scenery and overall character of the property. Multiple potential

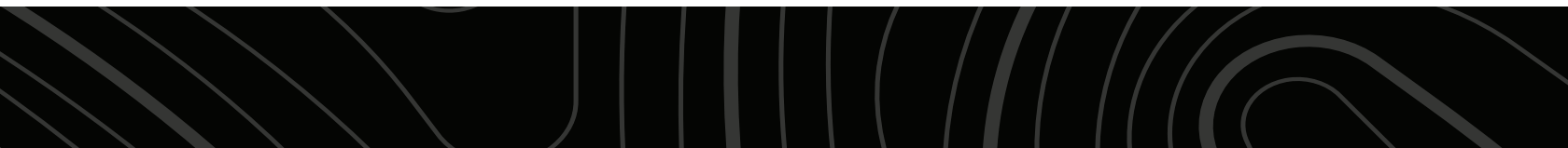
building sites provide flexibility for a custom home or weekend retreat. Whether you're looking to establish a permanent residence or invest in land with future potential, this property offers the space and setting to bring your vision to life.

Conveniently located just 9.5 miles from Fayette, 14 miles from Millport, 21 miles from Gordo, and only 38 miles from Tuscaloosa, you'll enjoy the peace of rural living without being far from shopping, dining, schools, and other everyday amenities.

## PROPERTY FEATURES

COUNTY: **FAYETTE** | STATE: **ALABAMA** | ACRES: **27.27**

- AL-159 frontage
- Access to utilities
- Pine timber
- Year-round creek
- Homesite potential
- 27.27 surveyed acres
- 9.5 miles to Fayette, AL
- 14 miles to Millport, AL
- 21 miles to Gordo, AL
- 38 miles to Tuscaloosa, AL



# AL-159 FRONTAGE

---



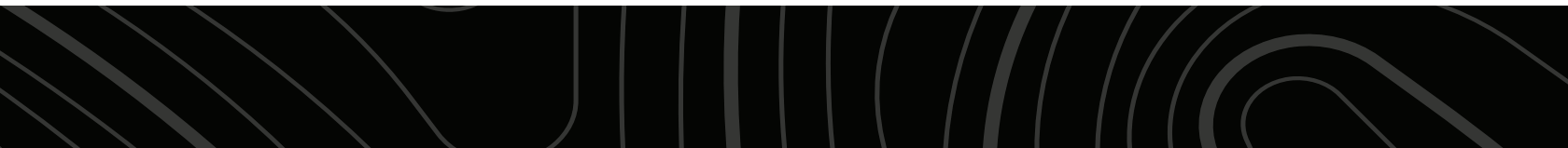
## PINE TIMBER

---



# HOMESITE POTENTIAL

---



# ADDITIONAL PHOTOS

---



# AERIAL MAP



©2026 AgriData, Inc.

Boundary Center: 33° 34' 39.35, -87° 53' 57.82



**16-17S-13W**  
**Fayette County**  
**Alabama**



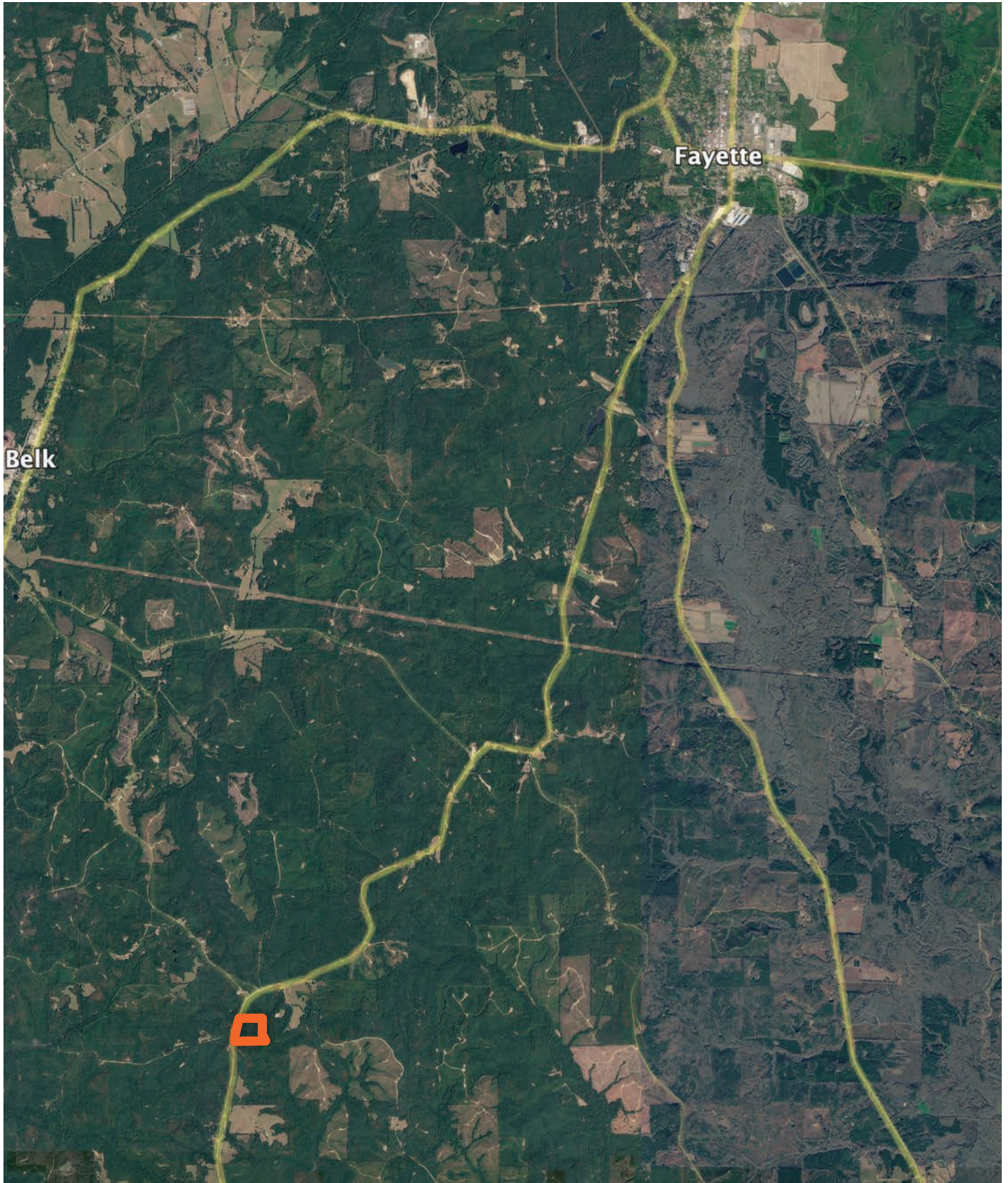
Maps Provided By:  
**surety**  
CUSTOMIZED ONLINE MAPPING  
© AgriData, Inc. 2025 www.AgriDataInc.com

6/8/2026

Field borders provided by Farm Service Agency as of 5/21/2008.

# OVERVIEW MAP

---



# AGENT CONTACT

---

Born and raised in Millport, Alabama, Trenton Wilson grew up where hunting, fishing and quality time with family in the outdoors weren't hobbies, they were a way of life. His upbringing left him with a lot more than memories - it gave him a soul-level understanding of the land, and a lifelong respect for the people who care for it.

After earning a degree from the University of Alabama, Trenton built a career in sales by doing things the right way - showing up, listening close, and delivering what he said he would. Those same values guide him today as a land agent. He takes the time to get to know his clients, how to market a property with purpose, and how to match a buyer to the kind of ground that fits their life.

Trenton serves all of Alabama and Mississippi with a sharp eye and steady hand. He's an active member of Springhill Baptist Church and the kind of guy who believes that trust isn't given, it's earned.



## TRENTON WILSON

LAND AGENT

**205.431.3777**

[TWilson@MidwestLandGroup.com](mailto:TWilson@MidwestLandGroup.com)



---

## MidwestLandGroup.com

This property is being offered by Midwest Land Group, LLC. 913.674.8010. All information provided by Midwest Land Group, LLC or their agents was acquired from sources deemed accurate and reliable, however we do not warrant its accuracy or completeness. Midwest Land Group, LLC assumes no liability for error, omission or investment results. Midwest Land Group, LLC. Licensed in Alabama, Arkansas, Illinois, Indiana, Iowa, Kansas, Kentucky, Louisiana, Minnesota, Mississippi, Missouri, Montana, Nebraska, North Dakota, Ohio, Oklahoma, South Dakota, Tennessee, Texas, Wisconsin, and Wyoming.