

MIDWEST LAND GROUP PRESENTS

269 ACRES

# DOUGLAS COUNTY, MO

000 COUNTY ROAD DD 447, OLDFIELD, MISSOURI, 65720



[MidwestLandGroup.com](http://MidwestLandGroup.com)

MIDWEST LAND GROUP IS HONORED TO PRESENT

# 269 +/- ACRE OZARKS HUNTING RETREAT WITH BEAVER CREEK FRONTAGE

Located in the heart of the Ozarks, this 269 +/- acre recreational property offers an exceptional combination of live water, productive ground, and outstanding wildlife habitat. With rare frontage along beautiful Beaver Creek, the property features lush creek-bottom hay fields, multiple springs, mature hardwood timber, and a well-established trail system that provides easy access throughout the farm.

The diverse landscape creates ideal habitat for deer and turkey, with excellent hunting opportunities and several

prime locations for food plots and stand sites. Beaver Creek and the natural springs provide a year-round water source for wildlife while adding to the property's scenic appeal.

Whether you're looking for a premier hunting property, a productive farm, or a private Ozarks retreat, this tract offers the size, water, and habitat rarely found in one package. From the fertile creek bottoms to the timbered ridges overlooking the valley, this is the kind of property that only gets better the more you explore it.



# PROPERTY FEATURES

COUNTY: **DOUGLAS** | STATE: **MISSOURI** | ACRES: **269**

- Frontage on Beaver Creek
- Lush creek-bottom hay ground
- Multiple natural springs
- Mature hardwood timber
- Established trail system throughout the property
- Excellent deer and turkey hunting
- Prime food plot locations
- Diverse terrain with exceptional wildlife habitat
- Beautiful Ozarks setting with year-round water sources



# FRONTAGE ON BEAVER CREEK

---

With rare frontage along beautiful Beaver Creek, the property features lush creek-bottom hay fields, multiple springs, mature hardwood timber, and a well-established trail system that provides easy access throughout the farm.



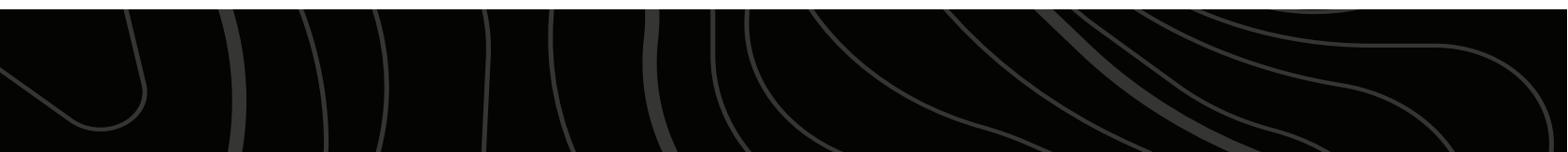
# MATURE HARDWOOD TIMBER

---



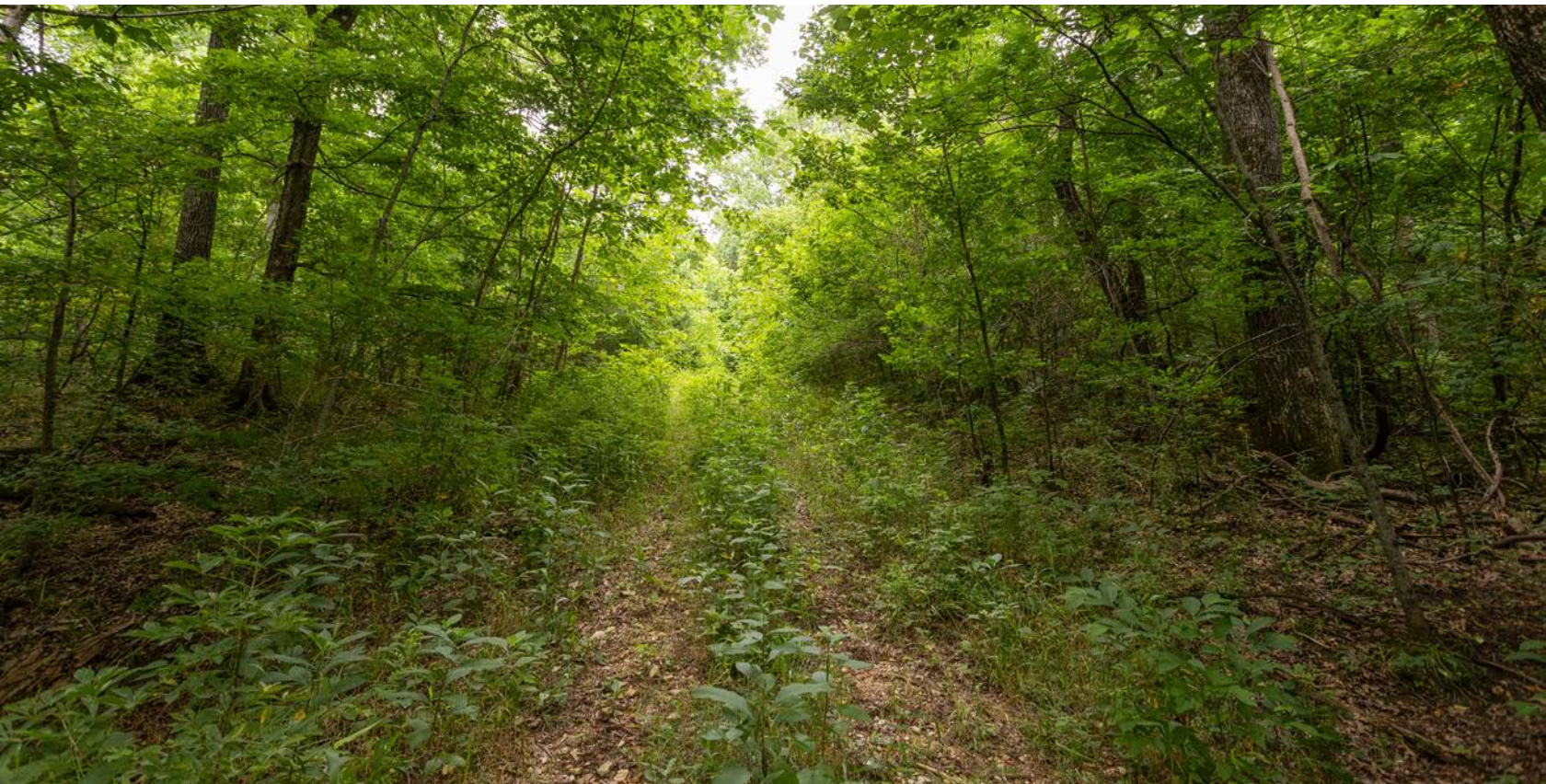
# LUSH CREEK-BOTTOM HAY GROUND

---



# ESTABLISHED TRAIL SYSTEM

---

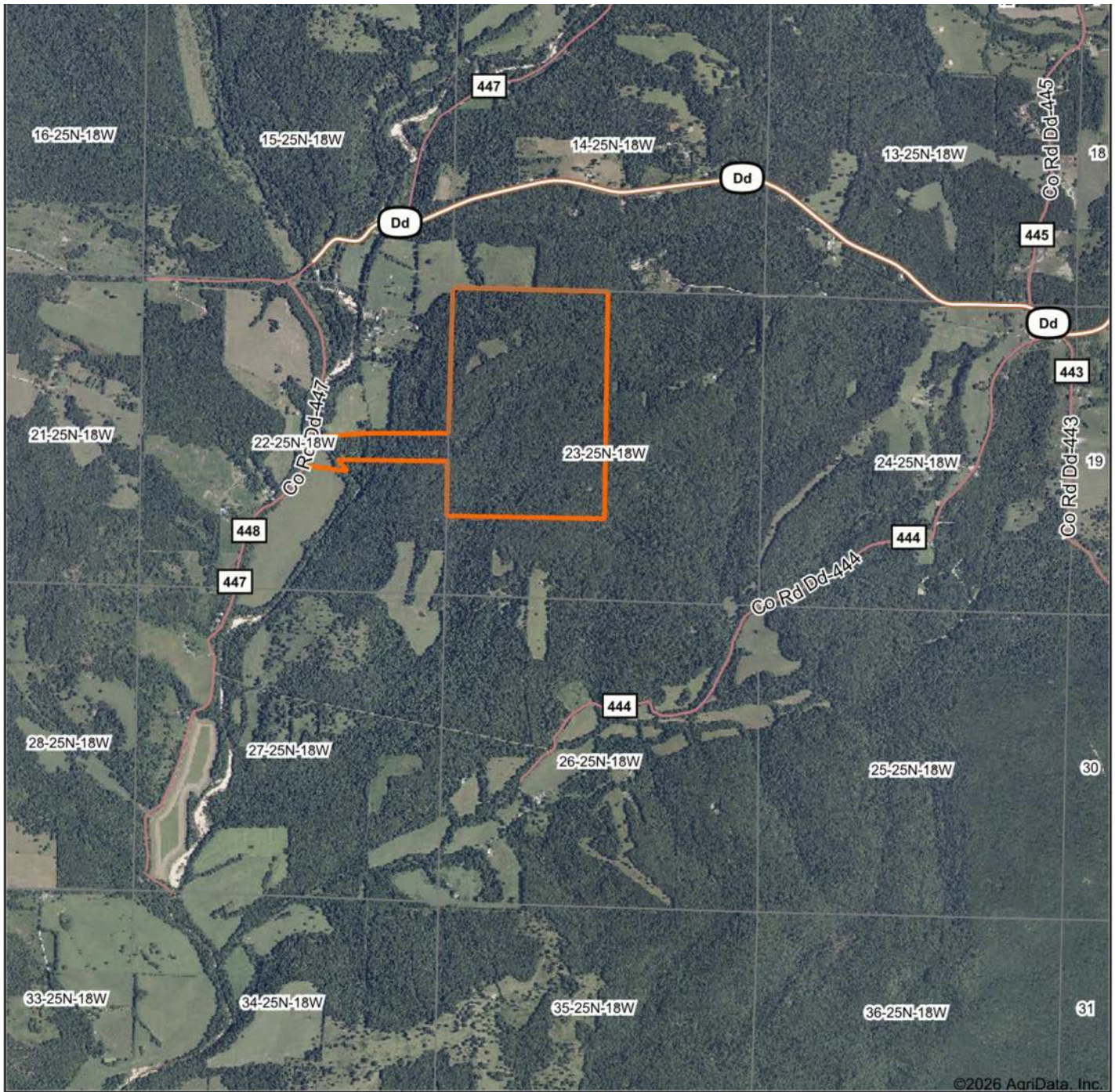


# EXCELLENT DEER AND TURKEY HUNTING

---



# AERIAL MAP



©2026 AgriData, Inc.

Boundary Center: 36° 50' 49.33, -92° 53' 24.73

0ft 2709ft 5418ft



Maps Provided By:



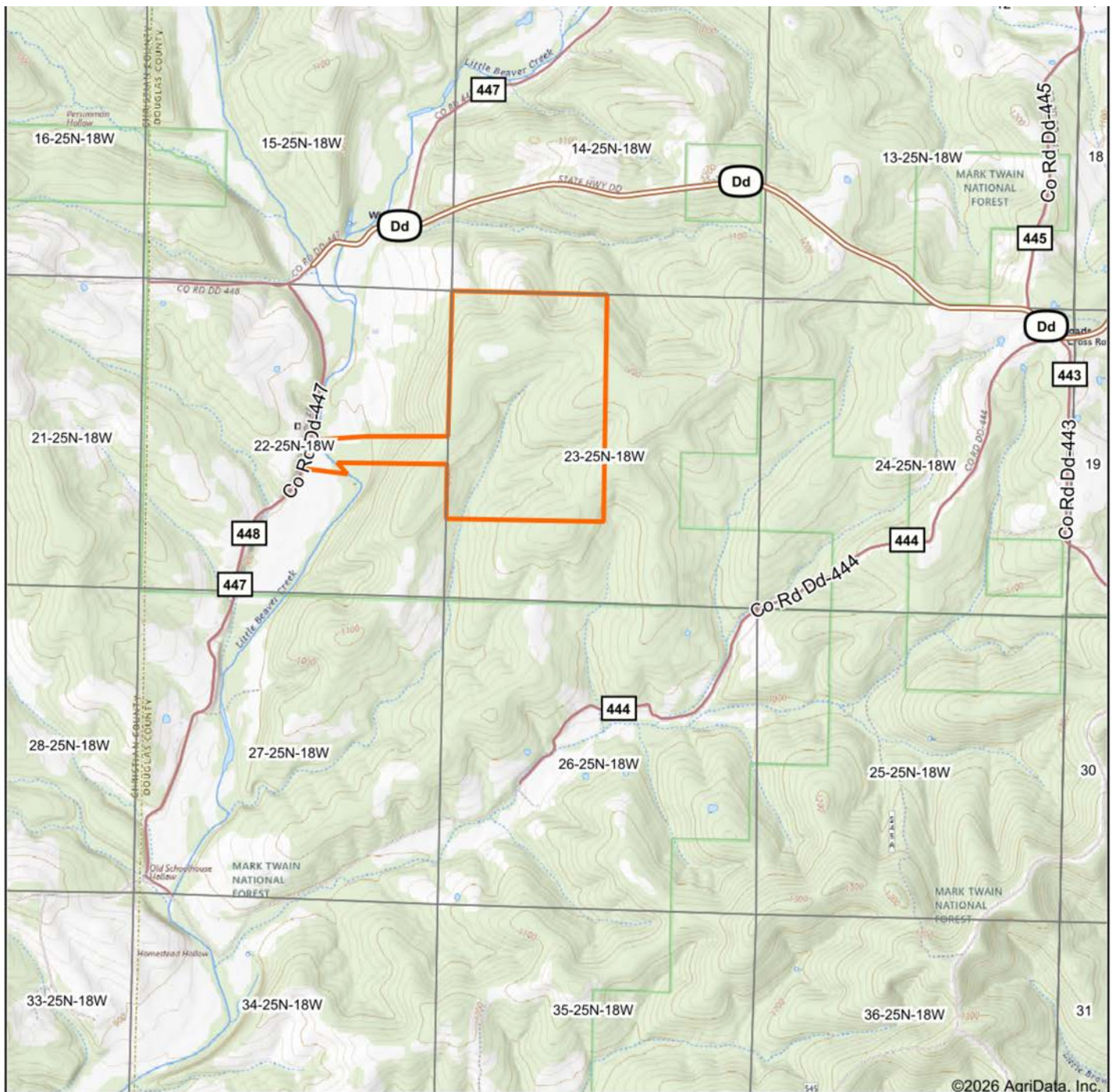
© AgriData, Inc. 2025 www.AgriDataInc.com

**23-25N-18W**  
**Douglas County**  
**Missouri**



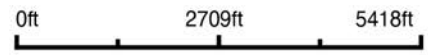
6/22/2026

# TOPOGRAPHY MAP



©2026 AgriData, Inc.

Map Center: 36° 50' 26.25, -92° 53' 3.24



Maps Provided By:



© AgriData, Inc. 2025

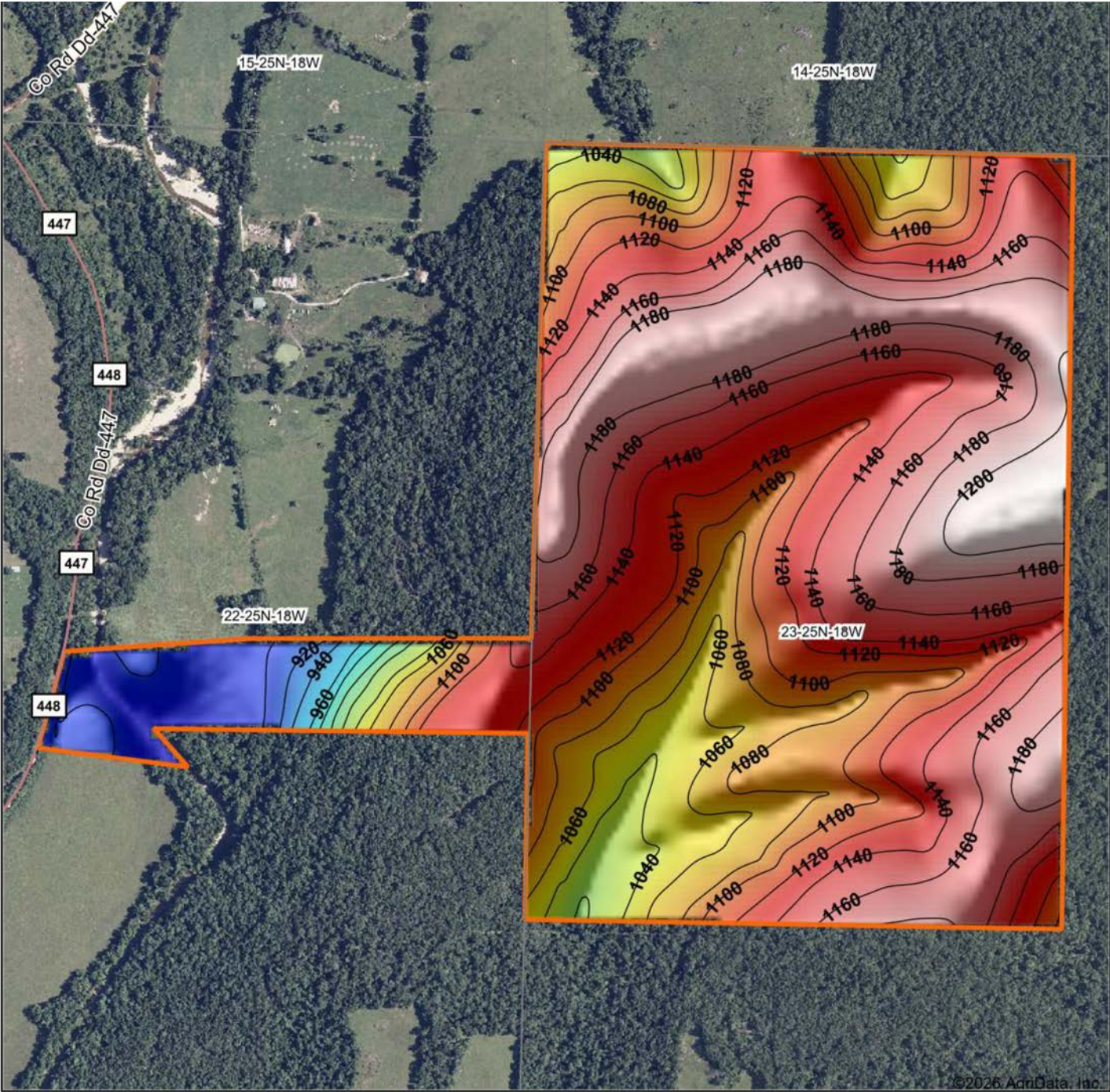
www.AgrIDataInc.com

**23-25N-18W**  
**Douglas County**  
**Missouri**

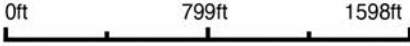


6/22/2026

# HILLSHADE MAP



Source: USGS 10 meter dem  
 Interval(ft): 20  
 Min: 888.1  
 Max: 1,210.6  
 Range: 322.5  
 Average: 1,113.3  
 Standard Deviation: 69.55 ft



**23-25N-18W**  
**Douglas County**  
**Missouri**

Boundary Center: 36° 50' 49.33, -92° 53' 24.73



Maps Provided By:  
**surety**  
 CUSTOMIZED ONLINE MAPPING  
 © AgriData, Inc. 2025 www.AgriDataInc.com

# OVERVIEW MAP

---



# AGENT CONTACT

Looking for land or selling a piece of property can be stressful or overbearing, but not if you're working with the right agent. Bjorn Wilkerson is all about making sure each client has an enjoyable experience from start to finish. A lifelong lover of the outdoors, Bjorn has a background in agriculture and a passion for all things outdoors. This includes hunting, fishing, camping, traveling, hiking, and land management, not to mention his personal favorites: spring turkey hunting, whitetail hunting, and bowfishing. Born in West Plains, Missouri, Bjorn attended Couch High School and graduated from Missouri State University—Springfield with a degree in Wildlife Management. Before coming to Midwest Land Group, he worked in agriculture and operations with Archer Daniels Midland (ADM), a human and animal nutrition company specializing in agricultural origination and processing, where he worked his way around the company, serving in a variety of positions, everything from trainee, plant manager, and recruiter to new manager development specialist and continuous improvement practitioner. Being a service to someone looking for hunting or farming property is what drives Bjorn. He wants each experience to not only be enjoyable, but seamless as well. If you're in the market to sell or buy land, give Bjorn a call.



**BJORN WILKERSON,**  
LAND AGENT

**417.233.1243**

[BWilkerson@MidwestLandGroup.com](mailto:BWilkerson@MidwestLandGroup.com)



**MidwestLandGroup.com**

This property is being offered by Midwest Land Group, LLC. 913.674.8010. All information provided by Midwest Land Group, LLC or their agents was acquired from sources deemed accurate and reliable, however we do not warrant its accuracy or completeness. Midwest Land Group, LLC assumes no liability for error, omission or investment results. Midwest Land Group, LLC. Licensed in Alabama, Arkansas, Illinois, Indiana, Iowa, Kansas, Kentucky, Louisiana, Minnesota, Mississippi, Missouri, Montana, Nebraska, North Dakota, Ohio, Oklahoma, South Dakota, Tennessee, Texas, Wisconsin, and Wyoming.