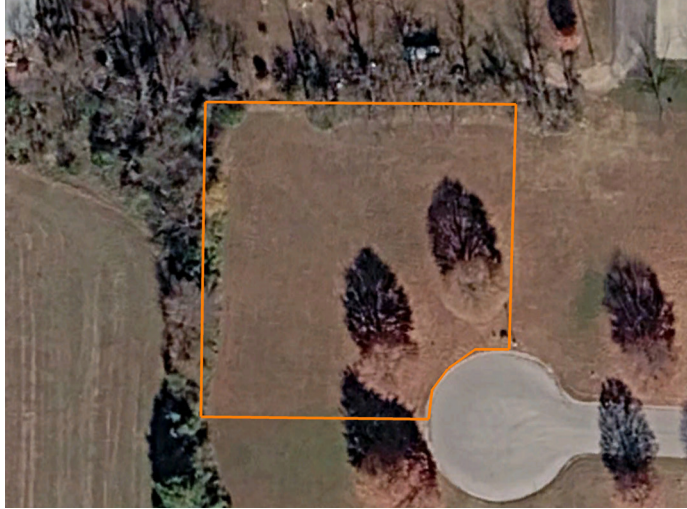


LAND FOR SALE

RESIDENTIAL LOT IN BUFFALO, MISSOURI



PROPERTY FEATURES

- Residential lot in Whispering Lane Estates
- Located at the end of the cul-de-sac
- City utilities
- High-speed internet
- Light CCR
- No HOA or fees
- Close to dining, shopping, and amenities
- Quiet neighborhood
- Quick access to Highway 65
- Buffalo, MO Schools



COUNTY: **DALLAS**

STATE: **MISSOURI**

ACRES: **.59**

For more information, contact:

AMBER MILLER, Land Agent

417.322.6995 | AMiller@MidwestLandGroup.com

MidwestLandGroup.com BUYERS, SELLERS, AND LAND – CONNECTED

This property is being offered by Midwest Land Group, LLC, 7111 W. 151st Street, Ste. 27, Overland Park, KS 66223, 913.674.8010.
Licensed in AL, AR, IA, IL, IN, KS, KY, LA, MN, MO, MS, MT, ND, NE, OH, OK, SD, TN, TX, WI, and WY.

