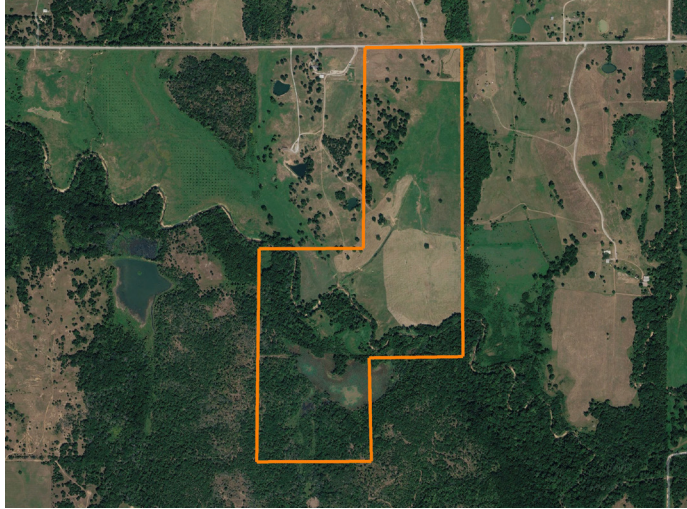


# LAND FOR SALE

## LUSH GRASSLANDS WITH PREMIER DEER & WATERFOWL HUNTING ON PAVED ROAD



### PROPERTY FEATURES

- 200 acres of mixed-use land offering recreation, hunting, and development potential
- 100 acres of grasses
- Combination of improved and native grasses ideal for grazing and wildlife forage
- Salt Creek frontage, a scenic creek running through the center, enhancing habitat and water access
- Newly dozed trail system provides excellent access throughout the entire property



COUNTY: **CREEK**

STATE: **OKLAHOMA**

ACRES: **200**



For more information, contact:

**MICHAEL GILL**, Land Agent

918.399.9333 | [MGill@MidwestLandGroup.com](mailto:MGill@MidwestLandGroup.com)

**MidwestLandGroup.com** BUYERS, SELLERS, AND LAND – CONNECTED

This property is being offered by Midwest Land Group, LLC, 7111 W. 151st Street, Ste. 27, Overland Park, KS 66223, 913.674.8010. Licensed in AL, AR, IA, IL, IN, KS, KY, LA, MN, MO, MS, MT, NE, OH, OK, SD, TN, TX, WI, and WY.

