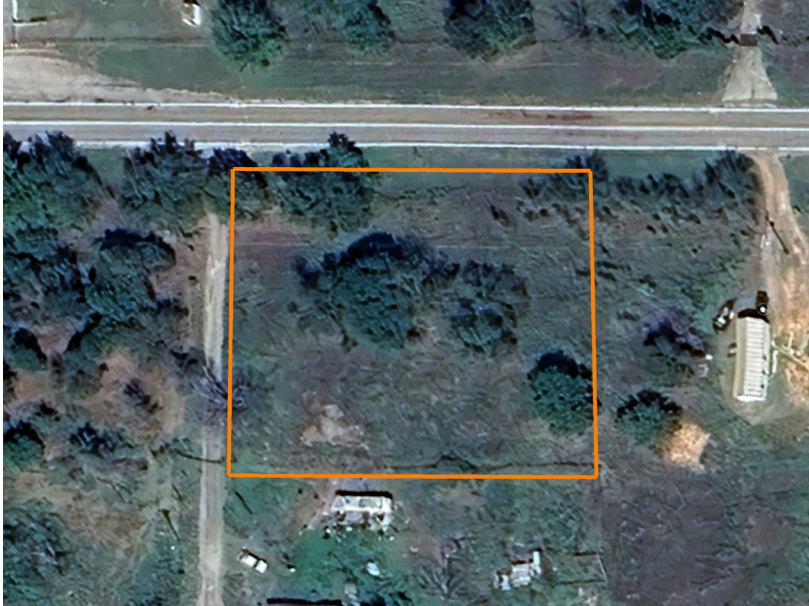


HOME FOR SALE

BRAND NEW 16'X80' MOBILE HOME ON 1 +/- ACRE WITH HIGHWAY FRONTAGE

COUNTY: **CREEK**
STATE: **OKLAHOMA**
ACRES: **1**



PROPERTY FEATURES

- Brand new 16'x80' mobile home
- 3 bedrooms, 2 bathrooms
- 4th flex room that could easily serve as a bedroom, home office, playroom, or hobby space
- Situated on 1 +/- acre
- Located just outside of Bristow off Highway 16
- Highway frontage with easy access
- Covered front deck
- Partially fenced property
- Brand-new privacy fence along back of property
- Spacious yard with room for pets, outdoor activities, or gardening

For more information, contact:

SUMMER WITTY, Land Broker

918.798.1561 | SWitty@MidwestLandGroup.com

MidwestLandGroup.com

This property is being offered by Midwest Land Group, LLC, 7111 W. 151st Street, Ste. 27, Overland Park, KS 66223, 913.674.8010. Licensed in AL, AR, IA, IL, IN, KS, KY, LA, MN, MO, MS, MT, ND, NE, OH, OK, SD, TN, TX, WI, and WY.

