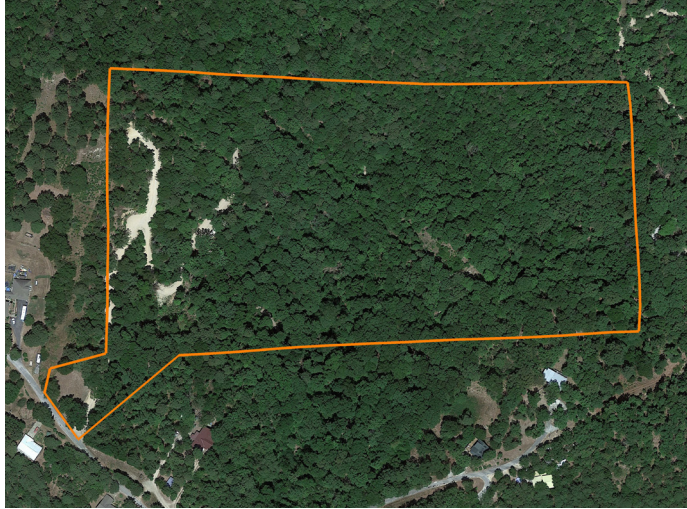


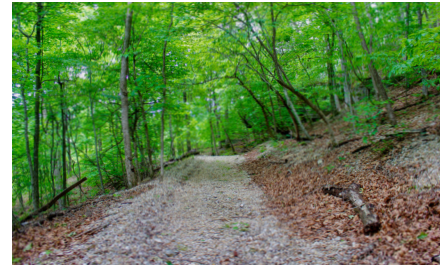
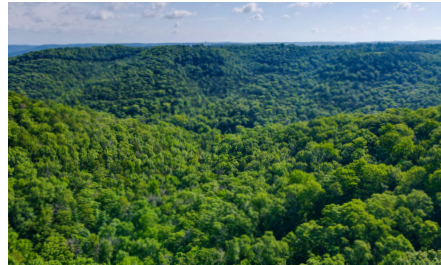
# LAND FOR SALE

## 22 +/- ACRES WITH PAVED ROAD FRONTAGE AND PUBLIC WATER AVAILABLE



### PROPERTY FEATURES

- Paved road frontage
- Public water available
- Electric available on two sides
- Vehicle size internal roads
- Adjoins Lake Leatherwood bike trails
- Unique rock features
- Seasonal creek/springs
- 3 miles to Downtown Eureka Springs
- 12 miles to Beaver Lake Dam



For more information, contact:

**JON MASSIE**, Land Agent

785.313.0981 | [JMassie@MidwestLandGroup.com](mailto:JMassie@MidwestLandGroup.com)

**MidwestLandGroup.com** BUYERS, SELLERS, AND LAND – CONNECTED

This property is being offered by Midwest Land Group, LLC, 7111 W. 151st Street, Ste. 27, Overland Park, KS 66223, 913.674.8010. Licensed in AL, AR, IA, IL, IN, KS, KY, LA, MN, MO, MS, MT, ND, NE, OH, OK, SD, TN, TX, WI, and WY.



COUNTY: **CARROLL**

STATE: **ARKANSAS**

ACRES: **22**

