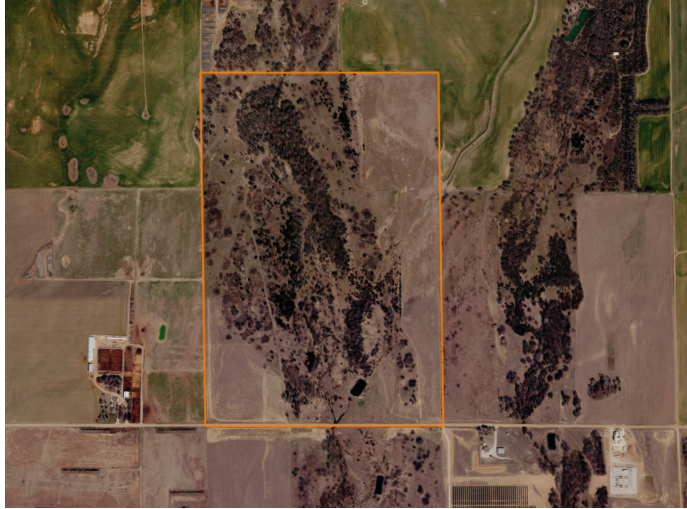


LAND FOR SALE

PREMIUM HUNTING PROPERTY IN RENOWNED BARBER COUNTY



PROPERTY FEATURES

- 65 +/- acres FSA cropland
- Mature timber
- Live spring
- Pit ponds
- Diverse habitat
- World-class whitetail hunting
- Rio Grande turkeys
- Upland birds
- Fully fenced and gated
- Minutes from Medicine Lodge



COUNTY: **BARBER**

STATE: **KANSAS**

ACRES: **240**



For more information, contact:

COLE SCHUMACHER, Land Agent

785.624.2191 | CSchumacher@MidwestLandGroup.com

MidwestLandGroup.com BUYERS, SELLERS, AND LAND – CONNECTED

This property is being offered by Midwest Land Group, LLC, 7111 W. 151st Street, Ste. 27, Overland Park, KS 66223, 913.674.8010. Licensed in AL, AR, IA, IL, IN, KS, KY, LA, MN, MO, MS, MT, NE, OH, OK, SD, TN, TX, WI, and WY.