

MIDWEST LAND GROUP PRESENTS

10.4 ACRES IN

TAYLOR COUNTY WISCONSIN



MidwestLandGroup.com

MIDWEST LAND GROUP IS HONORED TO PRESENT

CUSTOM BUILT HOME ON BEAUTIFUL RIVER FRONTAGE

This one checks all the boxes! This rural retreat starts with a modern 3 bedroom and 2 bath, story and half home with high-end rustic finishes built in 2019. Next is the 30'x36' heated and finished attached garage with a 540 square foot unfinished bonus room above. There is also a new 40'x28' detached shed for even more space. Last, but not least, the 10.4 acres is simply gorgeous. The setting is very private. The home is set above a beautiful stretch of the Jump River, and the views are a delight.

The custom built home is 1/2 log-sided with steel and cement board accents. A large covered porch with stamped concrete flanks the main entrance. There is another covered porch facing the river. Inside the home, tile, concrete, and luxury vinyl plank flooring cover the main level. The upstairs has a large bedroom with recently installed carpet and an open loft space. A custom log staircase, tongue and groove planking, rustic trim, and 20' vaulted ceilings create the perfect northwoods vibe.

The attached garage is heated and has water. Finished in steel, the attached garage provides a ton of flexibility to fit any outdoor lifestyle. The unfinished bonus room spans an additional 540 square feet - offering even more storage and potential.

The 10.4 acres packs a punch of its own. The 850 feet of river frontage is gorgeous. The frontage is all accessible, and the fishing in the Jump River is excellent. While the Jump River can and does produce musky - walleyes, and smallmouth bass are prevalent. The Jump River is a fantastic waterway for canoeing/kayaking as well. The acreage offers plenty of room to hunt. The sellers have been successful year over year with mature bucks. The western part of the land is a ridge set high above the river and contains an excellent stand location. The lot is loaded with primarily mature trees and provides room for any outdoor activity. A new build on such beautiful land on the Jump River does not come available very often.



PROPERTY FEATURES

COUNTY: **TAYLOR** | STATE: **WISCONSIN** | ACRES: **10.4**

- A fantastic primary residence or vacation home
- 1,800 square foot modern home
- 3 bedrooms, 2 baths
- High-end, rustic finishes
- High output, 6" drilled well with excellent water
- Large heated, attached garage with huge bonus room above
- Additional 40'x28' detached garage
- 850 feet of frontage on the Jump River
- 10.4 acres of outstanding fishing and deer, bear, and turkey hunting
- Private and quiet setting



1,800 SQUARE FOOT MODERN HOME

This rural retreat starts with a modern 3 bedroom and 2 bath, story and half home with high-end rustic finishes built in 2019. Next is the 30'x36' heated and finished attached garage with a 540 square foot unfinished bonus room above.



LARGE HEATED, ATTACHED GARAGE

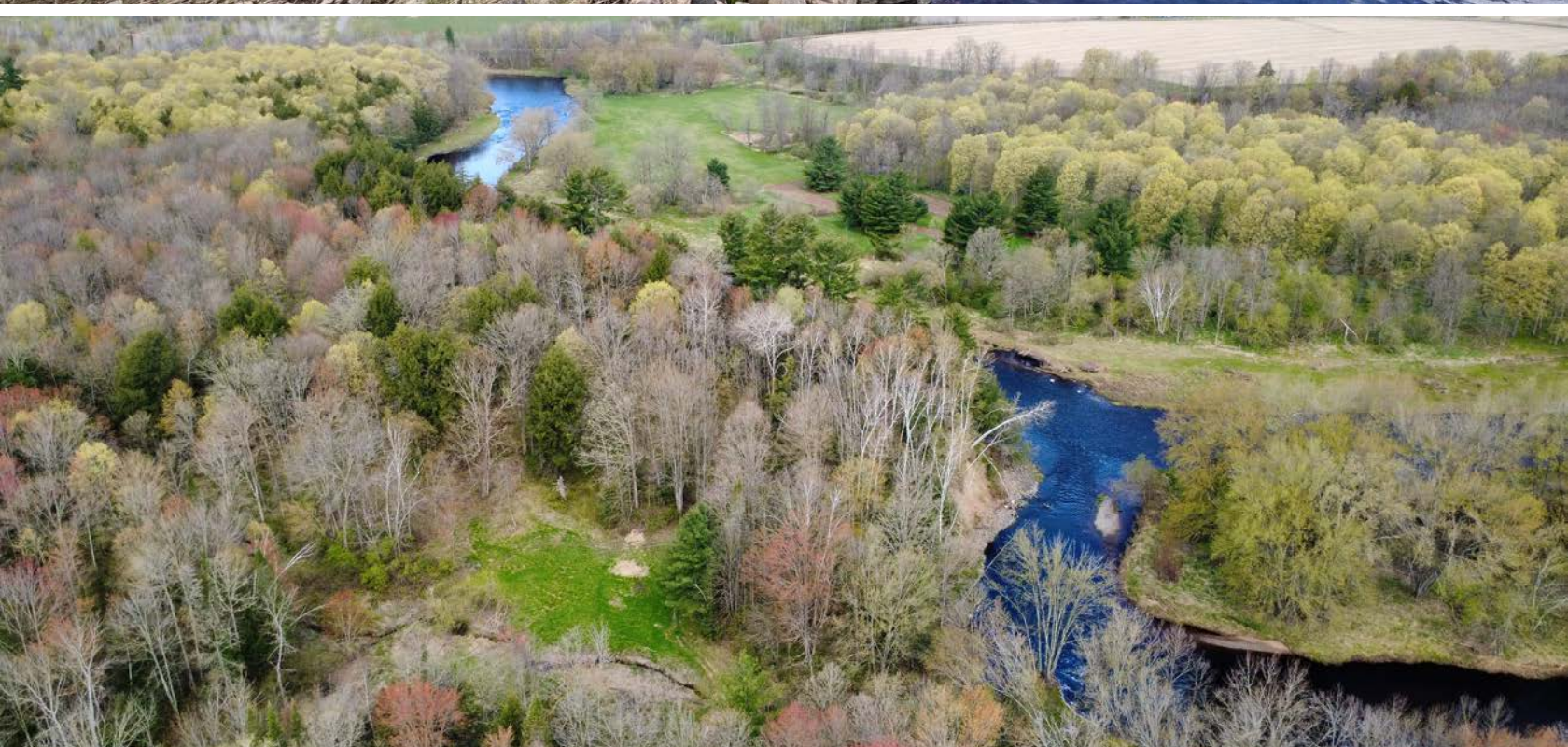


ADDITIONAL 40'X28' DETACHED GARAGE



850 FEET OF JUMP RIVER FRONTAGE

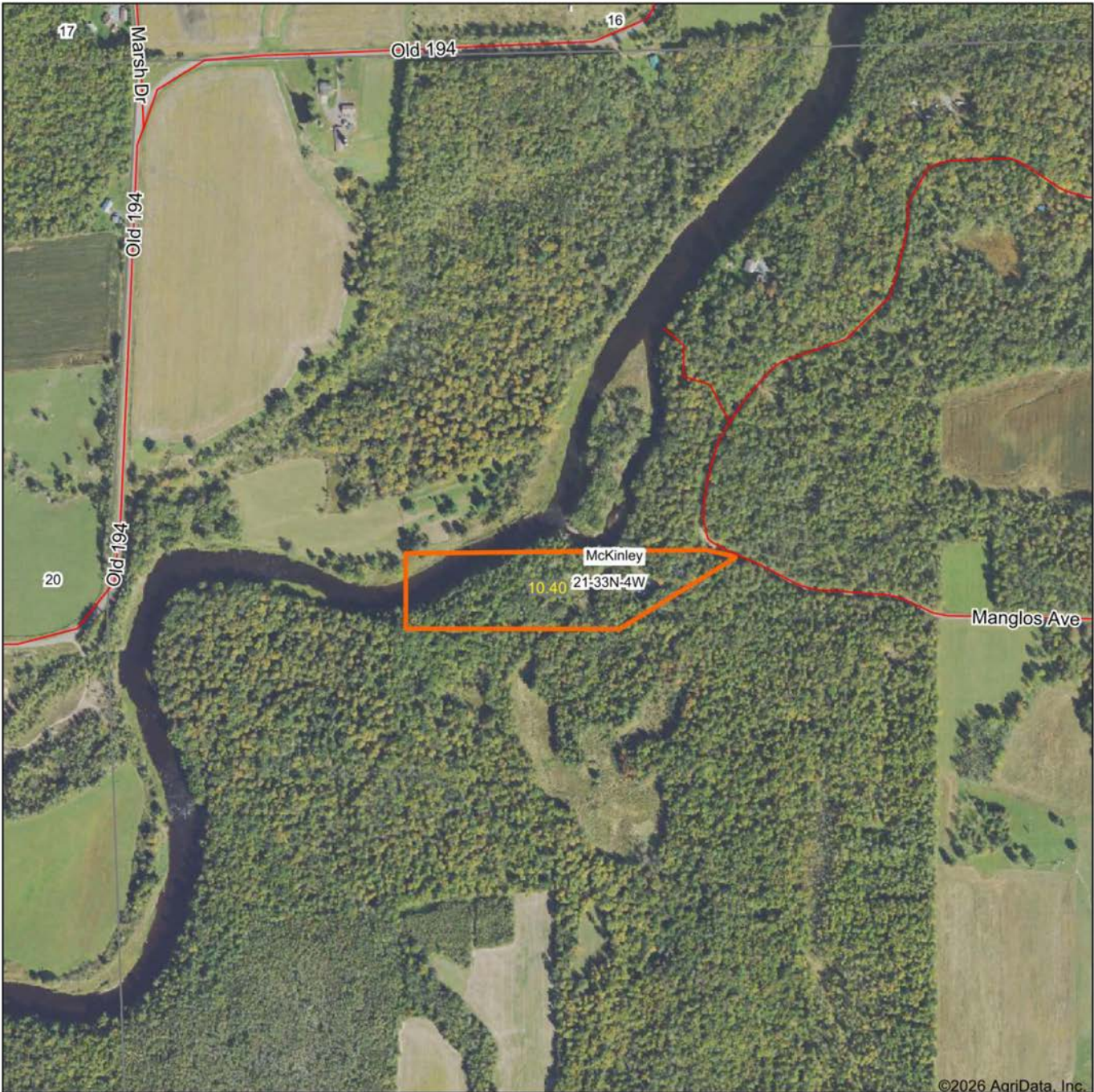
The frontage is all accessible, and the fishing in the Jump River is excellent. While the Jump River can and does produce musky - walleyes, and smallmouth bass are prevalent.



ADDITIONAL PHOTOS



AERIAL MAP



©2026 AgriData, Inc.

Boundary Center: 45° 19' 41.36, -90° 52' 32.28

0ft 719ft 1437ft



Maps Provided By:



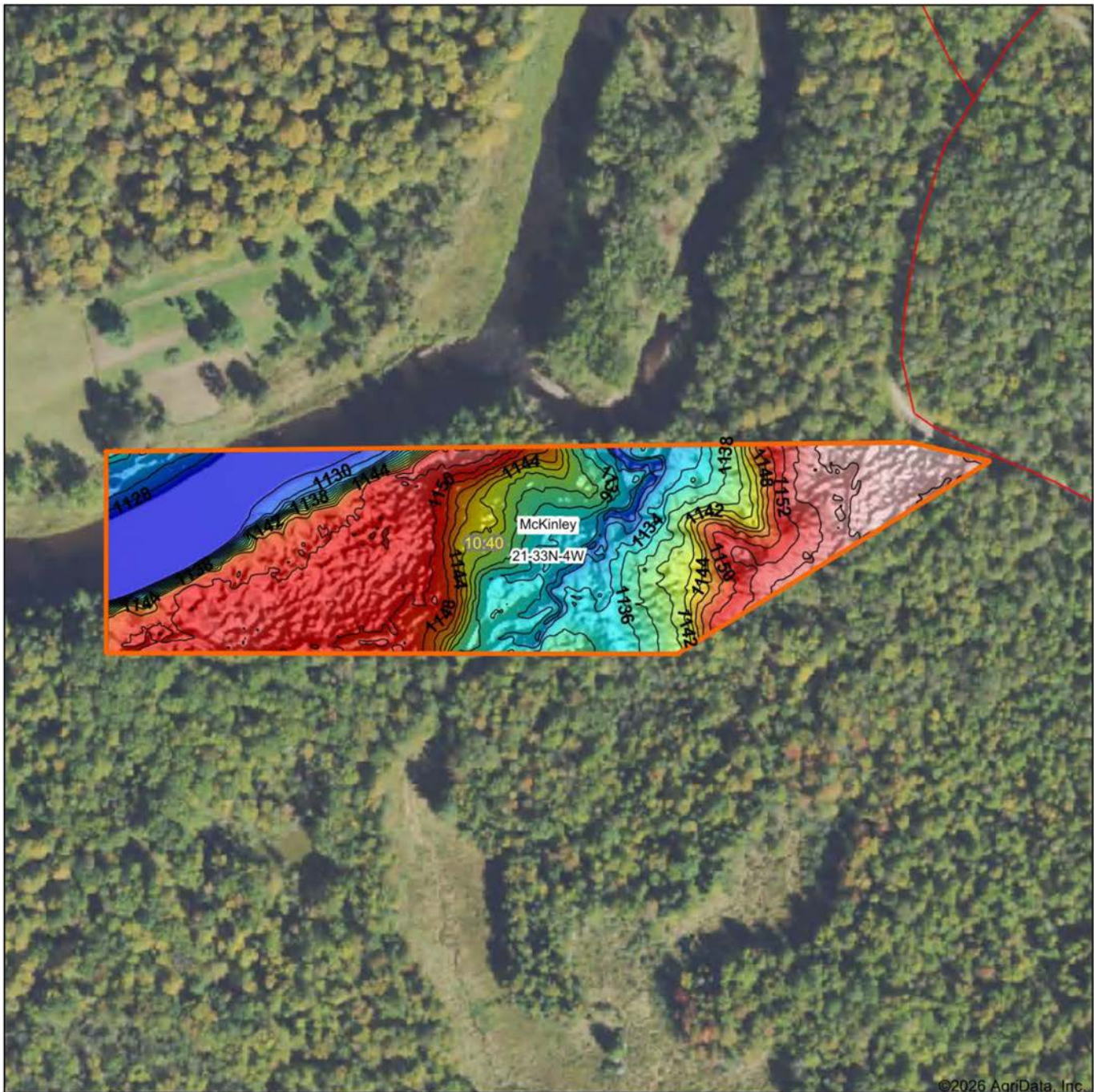
© AgriData, Inc. 2025 www.AgriDataInc.com

21-33N-4W
Taylor County
Wisconsin



4/10/2026

HILLSHADE MAP



©2026 AgriData, Inc.



Maps Provided By:



© AgriData, Inc. 2025 www.AgriDataInc.com

Source: USGS 1 meter dem
Interval(ft): 2

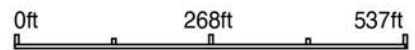
Min: 1,126.6

Max: 1,158.3

Range: 31.7

Average: 1,142.2

Standard Deviation: 9.48 ft

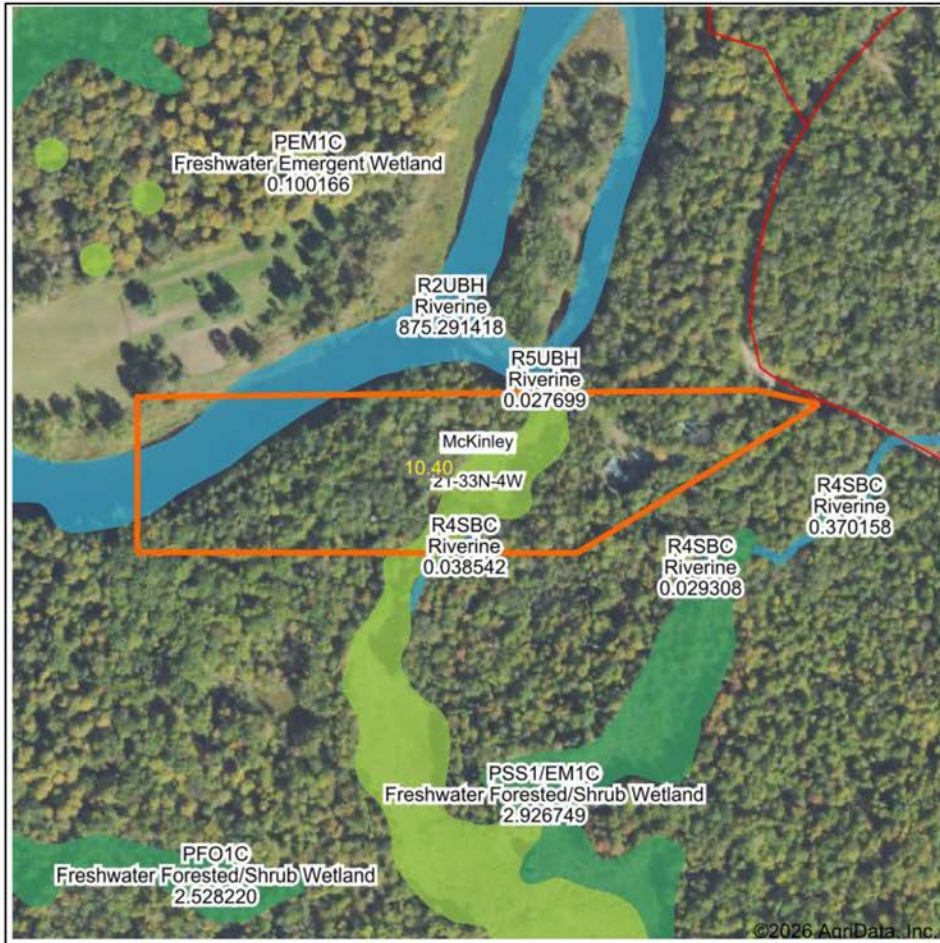


4/10/2026

21-33N-4W
Taylor County
Wisconsin

Boundary Center: 45° 19' 41.36, -90° 52' 32.28

WETLANDS MAP



State: **Wisconsin**
 Location: **21-33N-4W**
 County: **Taylor**
 Township: **McKinley**
 Date: **4/10/2026**

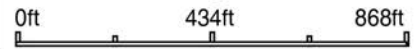


Maps Provided By:



© AgriData, Inc. 2025

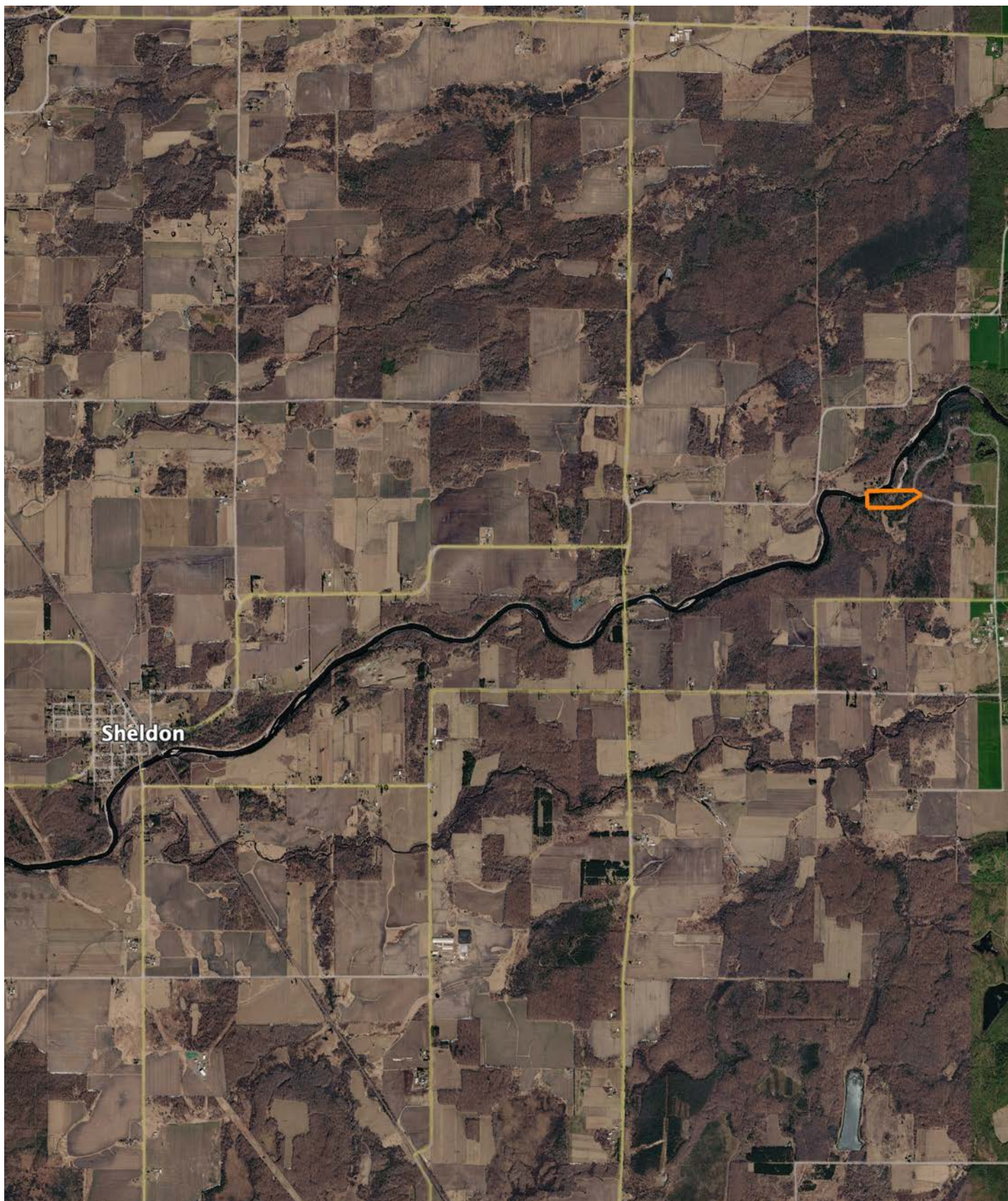
www.AgriDataInc.com



Classification Code	Type	Acres
PEM1C	Freshwater Emergent Wetland	1.25
R2UBH	Riverine	1.11
R4SBC	Riverine	0.03
Total Acres		2.39

Data Source: National Wetlands Inventory website. U.S. DoI, Fish and Wildlife Service, Washington, D.C. <http://www.fws.gov/wetlands/>

OVERVIEW MAP



AGENT CONTACT

Agent Matt Spets has a unique understanding of how the hunting and investment potentials of a parcel of land intertwine. A seasoned land investor and acknowledged whitetail hunting expert, Matt has successfully hunted in various states, gaining deep insights into whitetail deer behavior and how it relates to a given property. With his extensive network throughout Wisconsin, he can connect effortlessly with buyers and sellers, leveraging his expertise to help them achieve their real estate goals.

Born and raised in Ironwood, Michigan, Matt brings over 13 years of experience in educational leadership to his role. During his tenure, he spearheaded numerous financial, construction, and real estate projects, bolstering his school districts' financial standing and fostering relationships with local business leaders. In addition to being a youth baseball coach and serving on the Everest Youth Baseball board, Matt owns and operates Northwoods Baseball Select and is a member of the Everest Wrestling Club board.

Matt is also the founder of the Black River Trout Tournament conservation effort and serves as an advisor to the D.C. Everest Educational Foundation. His personal interests include hunting whitetails, fly fishing, skiing, and residential construction. Notably, in 2019, Matt and a partner ranked 7th overall in the Quest Hunt contest in Wisconsin, where he also won the Big Buck award using archery alone.

Matt resides in Wausau, WI, with his wife Sabrina, their daughter Danika, and sons Sawyer and Grady. His blend of hunting expertise, investment know-how, and broad connections make him a trusted and approachable ally for any real estate needs in Wisconsin.



MATT SPETS,
LAND AGENT
715.393.8387
MSpets@MidwestLandGroup.com



MidwestLandGroup.com

This property is being offered by Midwest Land Group, LLC. 913.674.8010. All information provided by Midwest Land Group, LLC or their agents was acquired from sources deemed accurate and reliable, however we do not warrant its accuracy or completeness. Midwest Land Group, LLC assumes no liability for error, omission or investment results. Midwest Land Group, LLC. Licensed in Alabama, Arkansas, Illinois, Indiana, Iowa, Kansas, Kentucky, Louisiana, Minnesota, Mississippi, Missouri, Montana, Nebraska, Ohio, Oklahoma, South Dakota, Tennessee, Texas, Wisconsin, and Wyoming.