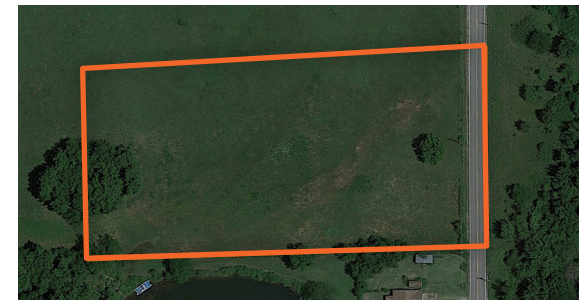


LAND FOR SALE

GREAT 3.01 +/- ACRE CLAREMORE, OKLAHOMA BUILD SITE - TRACT 4

COUNTY: **ROGERS**
STATE: **OKLAHOMA**
ACRES: **3.01**



PROPERTY FEATURES

- Surveyed 3.01 +/- acre tract
- Paved county road frontage
- Excellent build sites
- Minutes from Oologah Lake
- Convenient access to Highway 88
- Open pasture with scenic surroundings
- Light deed restrictions to protect property values
- Ideal for custom homes or weekend retreats
- Less than 5 miles to Redbud Marina



For more information, contact:

TONY PRIDEAUX, Land Agent

918.960.1226 | TPrideaux@MidwestLandGroup.com

MidwestLandGroup.com

