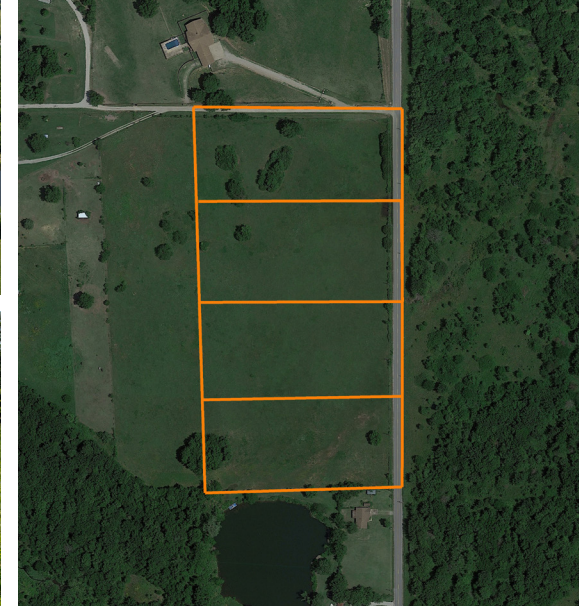


LAND FOR SALE

GREAT 3.01 +/- ACRE CLAREMORE, OKLAHOMA BUILD SITES

COUNTY: **ROGERS**
STATE: **OKLAHOMA**
ACRES: **12.4**



PROPERTY FEATURES

- Four surveyed 3.01 +/- acre tracts
- Paved county road frontage
- Water and electric available
- Excellent build sites
- Minutes from Oologah Lake
- Convenient access to Highway 88
- Open pasture with scenic surroundings
- Ideal for custom homes
- Light deed restrictions to protect property values
- 35 miles to Tulsa Airport
- 8 miles to the nearest hospital
- 4.8 miles to Redbud Marina



For more information, contact:

TONY PRIDEAUX, Land Agent

918.960.1226 | TPrideaux@MidwestLandGroup.com

MidwestLandGroup.com

