

MIDWEST LAND GROUP PRESENTS

157 ACRES IN

---

# REPUBLIC COUNTY KANSAS



00000 SHADY ROAD, BELLEVILLE, KANSAS 66935

MIDWEST LAND GROUP IS HONORED TO PRESENT

# UNMATCHED HUNTING PROPERTY IN NORTH CENTRAL KANSAS

This quarter section in Republic County, Kansas, stands as one of the best recreational farm opportunities hitting the market in 2026. A quick review of the aerial map confirms its potential. Spanning 157 acres, this property offers a rare combination of diverse and extensive habitats, making it a standout in a region renowned for world-class Whitetail deer and turkey hunting. It holds immense potential, awaiting the right owner to transform it into something truly exceptional.

West Creek traverses the property from the northwest to the southeast, providing clear, flowing water and dense hardwood timber. From the southwest, another large, densely timbered draw system, rich with hardwoods and cedars, connects to the creek. These travel corridors converge at the farm's center, creating an ideal environment for cruising bucks during the rut. The western half features rolling topography, native grass, deep draws, and varying timber density, serving as the main bedding area, strategically positioned away from roads and out of sight.

Secluded from road frontage, the farm benefits from a northern boundary road that is now a dead end with minimal traffic. Most of the property is screened by timber and elevation changes, enhancing its privacy. A large interior field surrounded by cover is a rare find in North Central Kansas, with smaller fields perfect for development into food plots. Approximately 55 acres of cropland rotate between wheat, corn, soybeans, and milo, with alfalfa being a promising option for the area.

An efficient interior trail system provides access throughout the property, which feels and functions larger than its actual size. There are numerous potential sites for stands and blinds. Situated in one of Kansas's most sought-after regions, just a mile off Highway 81 and minutes from Belleville and Concordia, the location offers convenient year-round access and proximity to resources. The seller believes all mineral rights are intact and included. Property taxes are approximately \$1,600 annually. This opportunity is rare and unlikely to be available for long. Contact the listing agent today to schedule a private tour.



# PROPERTY FEATURES

COUNTY: **REPUBLIC** | STATE: **KANSAS** | ACRES: **157**

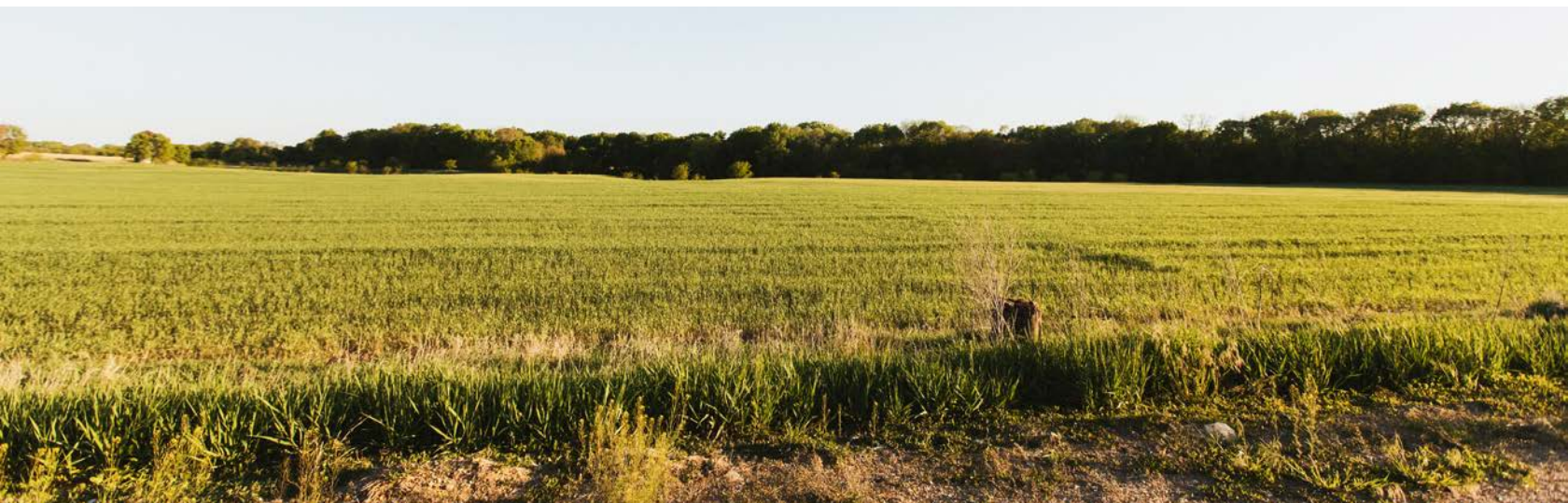
- 55 +/- acres of cropland
- 1 mile west of Highway 81
- Minutes from Belleville and Concordia
- West Creek
- Hardwood timber
- World-Class whitetail and turkey hunting
- Interior trail system
- Little road visibility
- Mineral rights included



# 55 +/- ACRES OF CROPLAND

---

Approximately 55 acres of cropland rotate between wheat, corn, soybeans, and milo, with alfalfa being a promising option for the area.



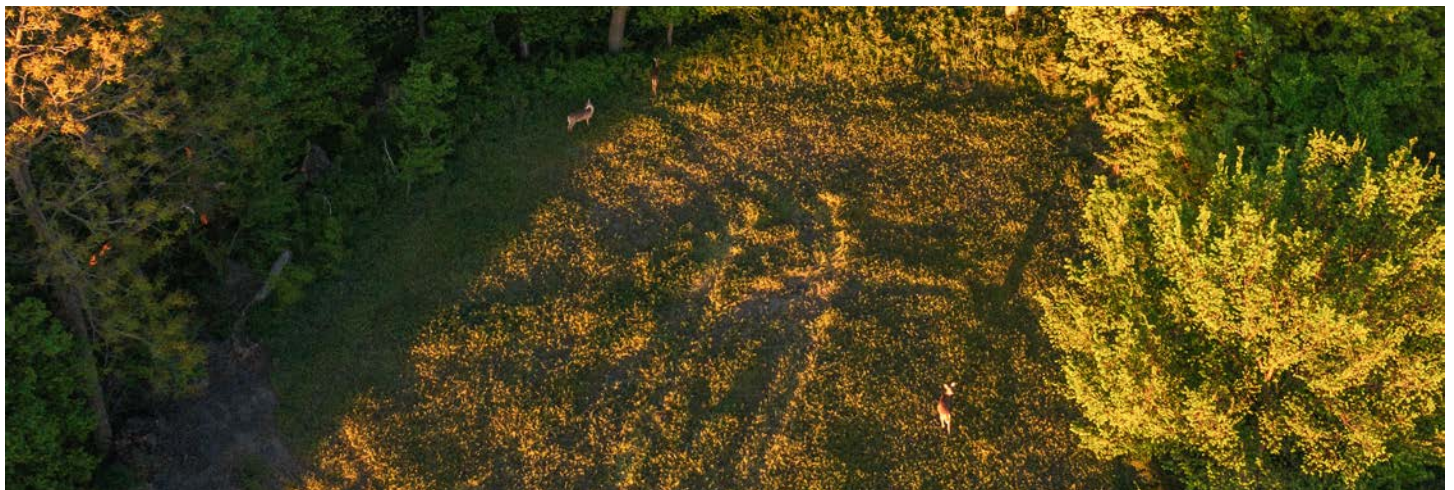
# NATIVE GRASSES

---



# WHITETAIL AND TURKEY HUNTING

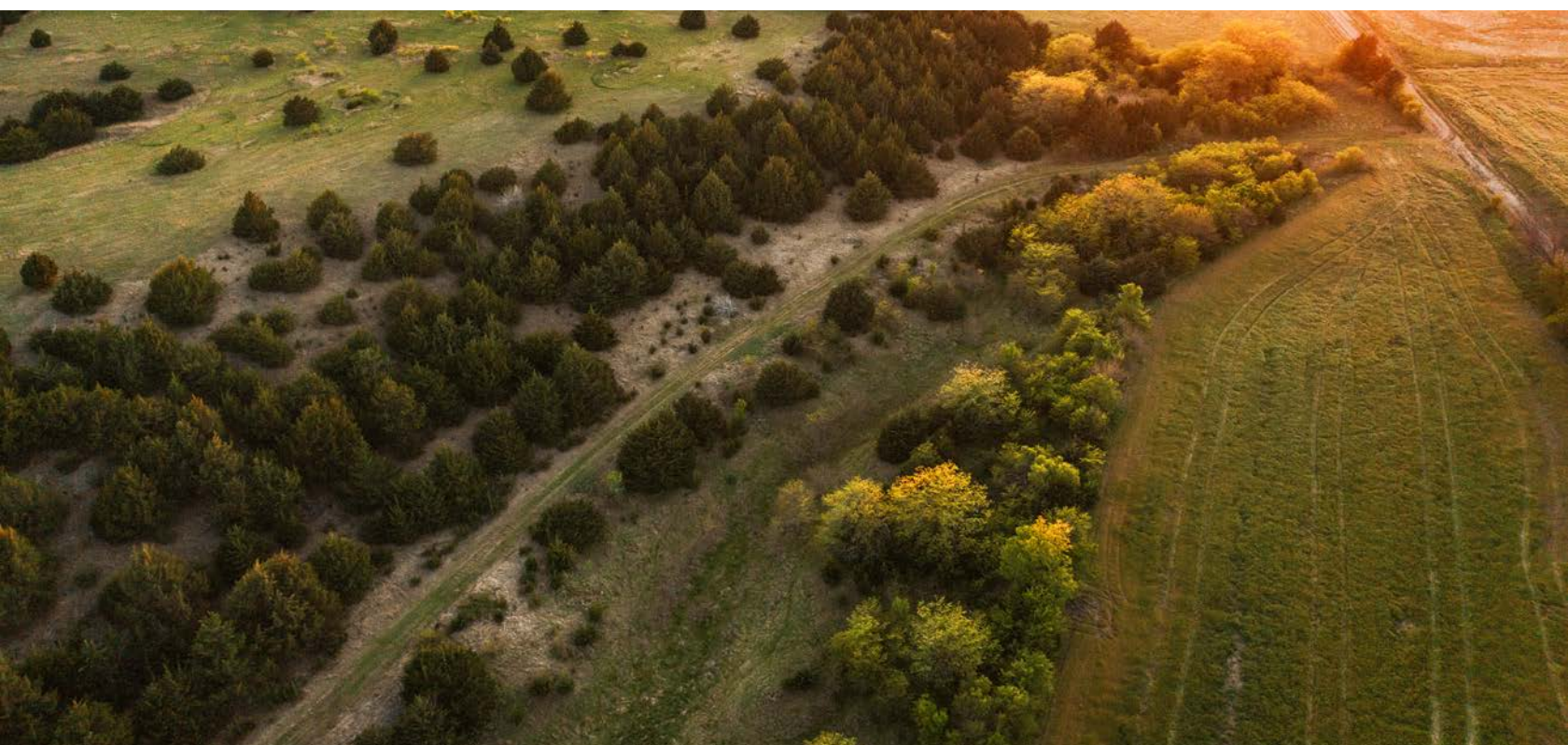
---



# INTERIOR TRAIL SYSTEM

---

An efficient interior trail system provides access throughout the property, which feels and functions larger than its actual size. There are numerous potential sites for stands and blinds.

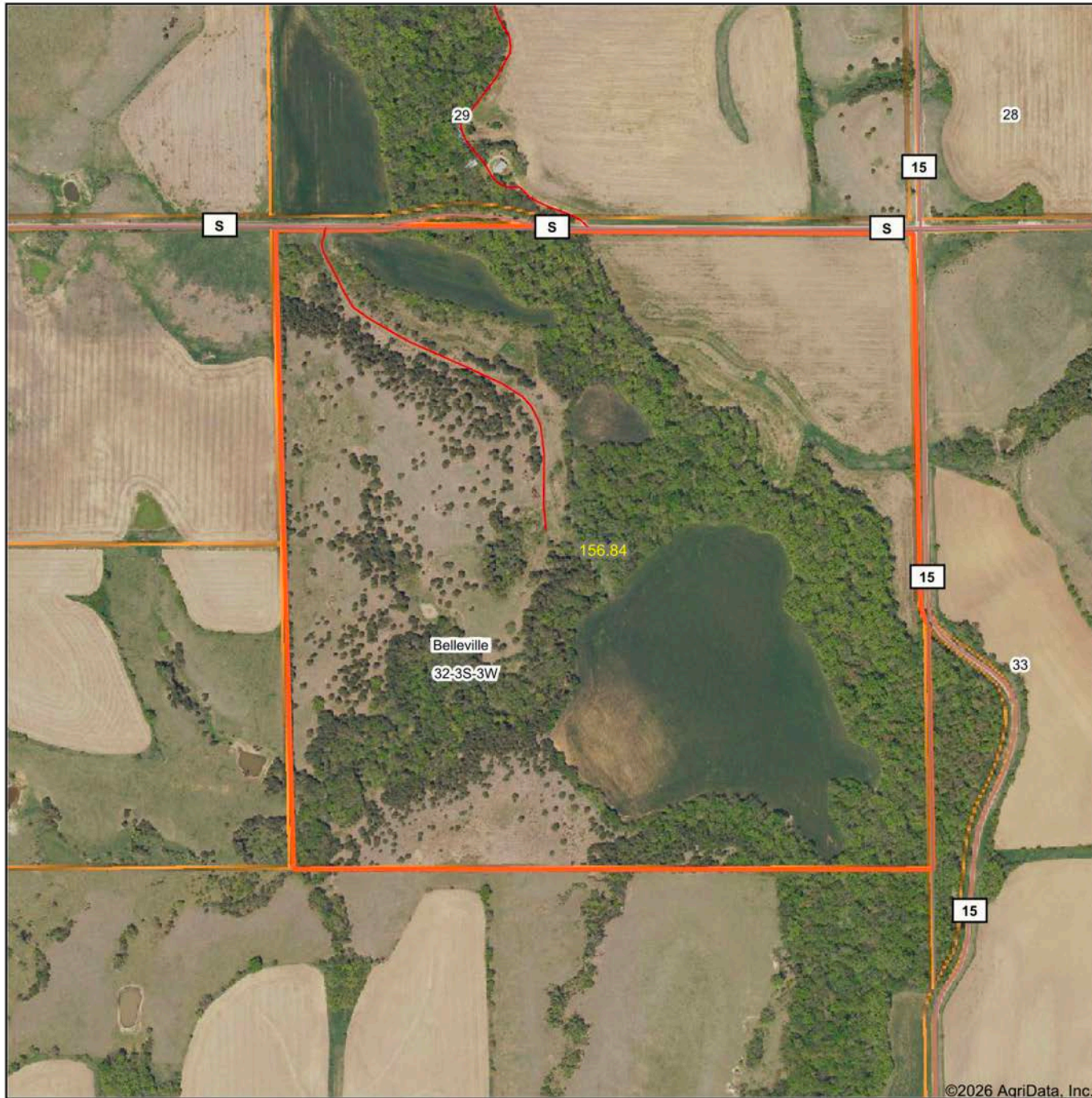


# 157 +/- SECLUDED ACRES

Most of the property is screened by timber and elevation changes, enhancing its privacy. A large interior field surrounded by cover is a rare find in North Central Kansas, with smaller fields perfect for development into food plots.



# AERIAL MAP



©2026 AgriData, Inc.

Boundary Center: 39° 45' 4.16, -97° 40' 31.51

0ft 640ft 1280ft



Maps Provided By:



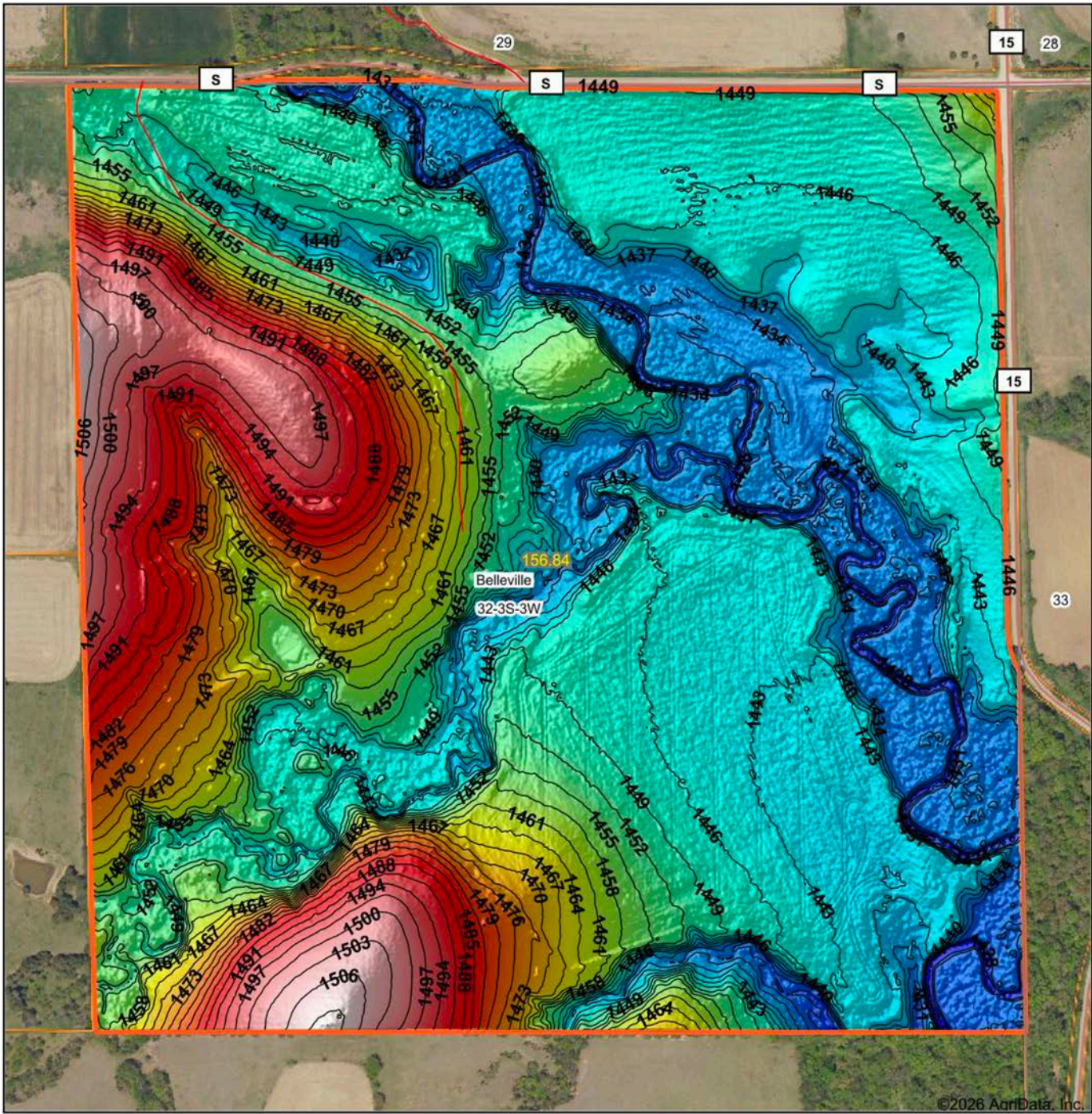
© AgriData, Inc. 2025 www.AgriDataInc.com

**32-3S-3W**  
**Republic County**  
**Kansas**



4/24/2026

# HILLSHADE MAP



©2026 AgriData, Inc.

Low Elevation High



Maps Provided By:



© AgriData, Inc. 2025 www.AgriDataInc.com

Source: USGS 1 meter dem  
 Interval(ft): 3  
 Min: 1,421.6  
 Max: 1,509.9  
 Range: 88.3  
 Average: 1,454.9  
 Standard Deviation: 19.75 ft

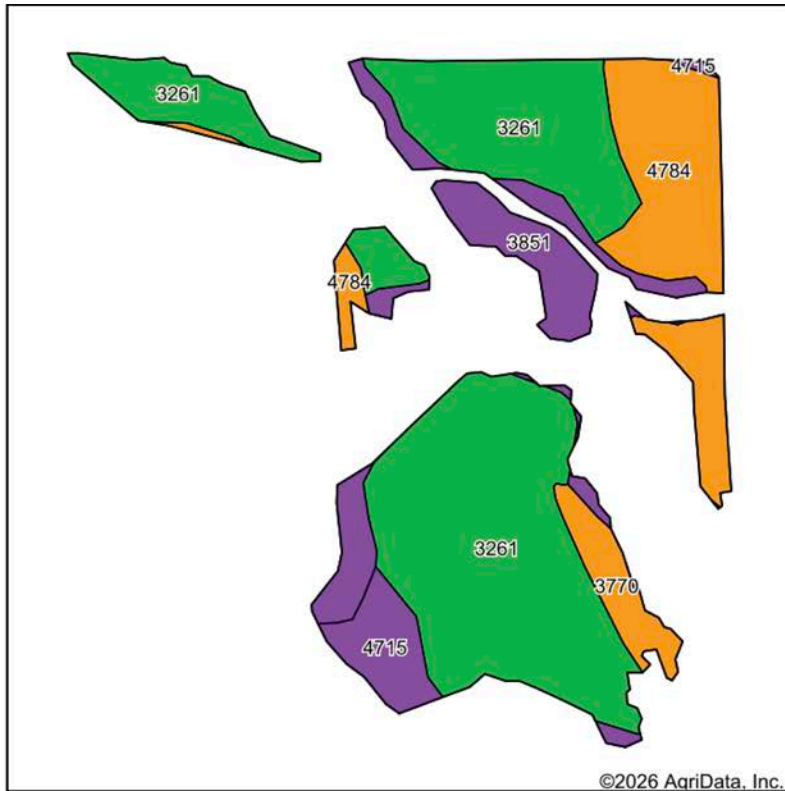


4/24/2026

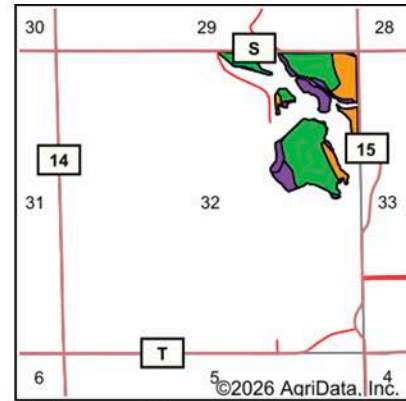
**32-3S-3W**  
**Republic County**  
**Kansas**

Boundary Center: 39° 45' 4.16, -97° 40' 31.51

# SOILS MAP



Soils data provided by USDA and NRCS.








State: **Kansas**  
 County: **Republic**  
 Location: **32-3S-3W**  
 Township: **Belleville**  
 Acres: **54.16**  
 Date: **4/24/2026**



Maps Provided By:  
 **surety**  
 CUSTOMIZED ONLINE MAPPING  
 © AgriData, Inc. 2025 www.AgriDataInc.com



Area Symbol: KS157, Soil Area Version: 24

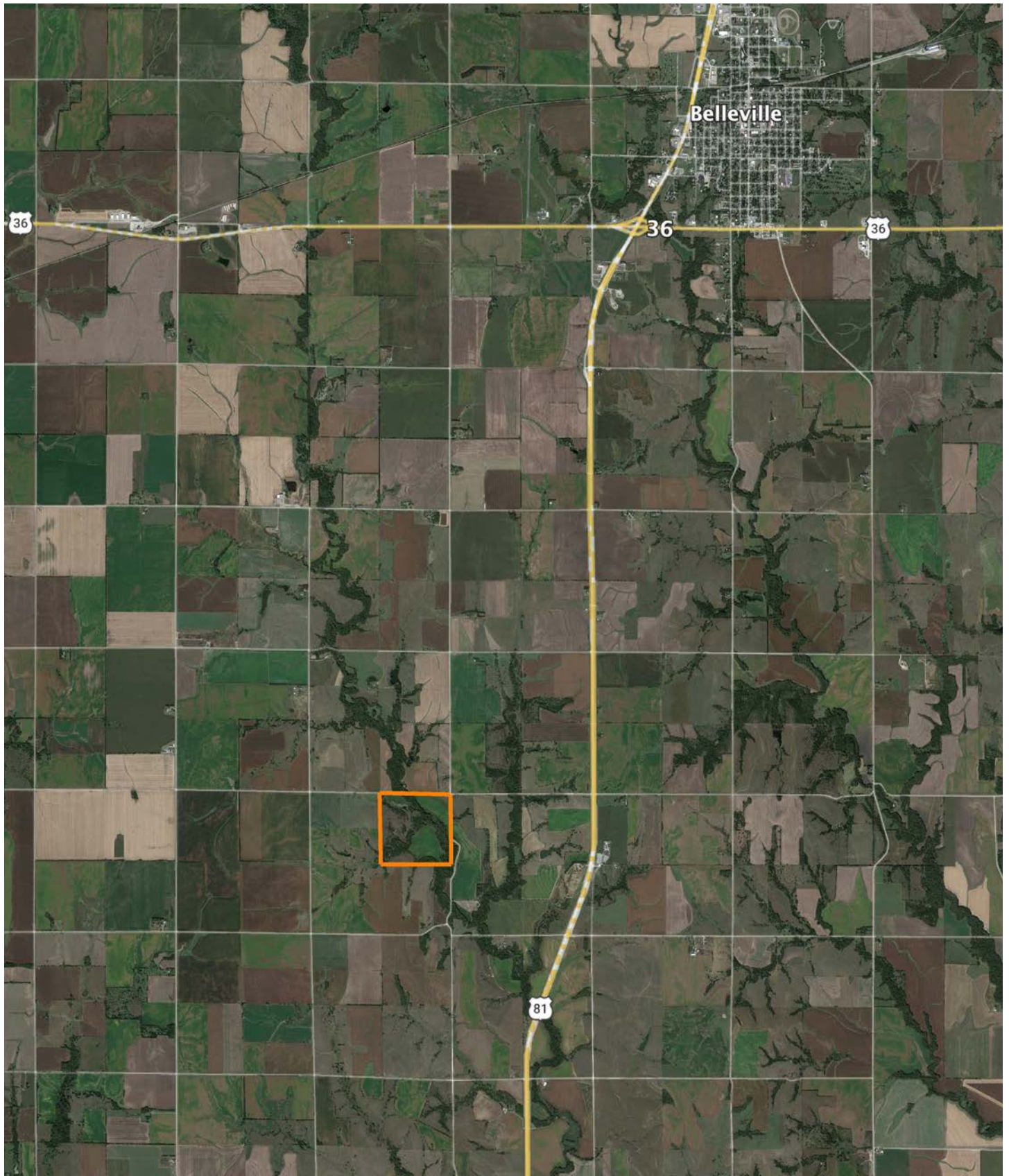
Code	Soil Description	Acres	Percent of field	Non-Irr Class Legend	Restrictive Layer	Soil Drainage	Non-Irr Class *c	Irr Class *c	Range Production (lbs/acre/yr)	*n NCCPI Overall
3261	Muir silt loam, very rarely flooded	31.60	58.4%		> 6.5ft.	Well drained	lw	lw	4540	82
4784	Tully silty clay loam, 3 to 7 percent slopes, eroded	10.10	18.6%		> 6.5ft.	Well drained	Ille	Ille	4045	53
3851	Geary-Hobbs silt loams, 0 to 30 percent slopes	7.41	13.7%		> 6.5ft.	Well drained	Vle		4745	66
4715	Kipson soils, 5 to 30 percent slopes	2.72	5.0%		1.3ft. (Paralithic bedrock)	Somewhat excessively drained	Vls		2705	32
3770	Muir silt loam, 3 to 7 percent slopes, eroded	2.33	4.3%		> 6.5ft.	Well drained	Ille	Ille	4615	70
<b>Weighted Average</b>							<b>2.39</b>	<b>*-</b>	<b>4386.8</b>	<b>*n 71.4</b>

\*n: The aggregation method is "Weighted Average using all components"

\*c: Using Capabilities Class Dominant Condition Aggregation Method

\*- Irr Class weighted average cannot be calculated on the current soils data due to missing data.

# OVERVIEW MAP



## AGENT CONTACT

An avid hunter, Cole spends his free time outdoors. He loves chasing giant whitetails and other big game, as well as turkey and upland hunting. Born in Hays, Kansas, Cole enjoys scouting and running cameras across the state, as well as shed hunting, doing conservation work and habitat improvements on the family farm, and introducing youth to the great outdoors. With a knack for harvesting world-class whitetails, Cole has killed two bucks over 200" and many over the Boone & Crockett mark.

Cole attended Fort Hays State University where he earned his Bachelor's degree in Biology, researching fawn recruitment and mortality in whitetail deer, mule deer, and elk. While in school, Cole worked in the state conservation department, helping manage and improve local state wildlife areas. After earning his Bachelor's degree, Cole pursued a career in land real estate to fulfill his passion for land and its native inhabitants. At Midwest Land Group, he's able to bring extensive knowledge on all things outdoors, thanks to a lifetime immersed in hunting, agriculture, and ranching.

This driven agent strives to make both buyers and sellers leave the table with a smile on their face. Between his grasp on creating and improving farms, from food plot placement to improving native cover, and his vast network of landowner relationships, Cole is able to help his clients plan their next move. If you're ready to buy or sell, give Cole a call.



**COLE SCHUMACHER,**

LAND AGENT

**785.624.3191**

[CSchumacher@MidwestLandGroup.com](mailto:CSchumacher@MidwestLandGroup.com)



**MidwestLandGroup.com**

This property is being offered by Midwest Land Group, LLC. 913.674.8010. All information provided by Midwest Land Group, LLC or their agents was acquired from sources deemed accurate and reliable, however we do not warrant its accuracy or completeness. Midwest Land Group, LLC assumes no liability for error, omission or investment results. Midwest Land Group, LLC. Licensed in Alabama, Arkansas, Illinois, Indiana, Iowa, Kansas, Kentucky, Louisiana, Minnesota, Mississippi, Missouri, Montana, Nebraska, Ohio, Oklahoma, South Dakota, Tennessee, Texas, Wisconsin, and Wyoming.