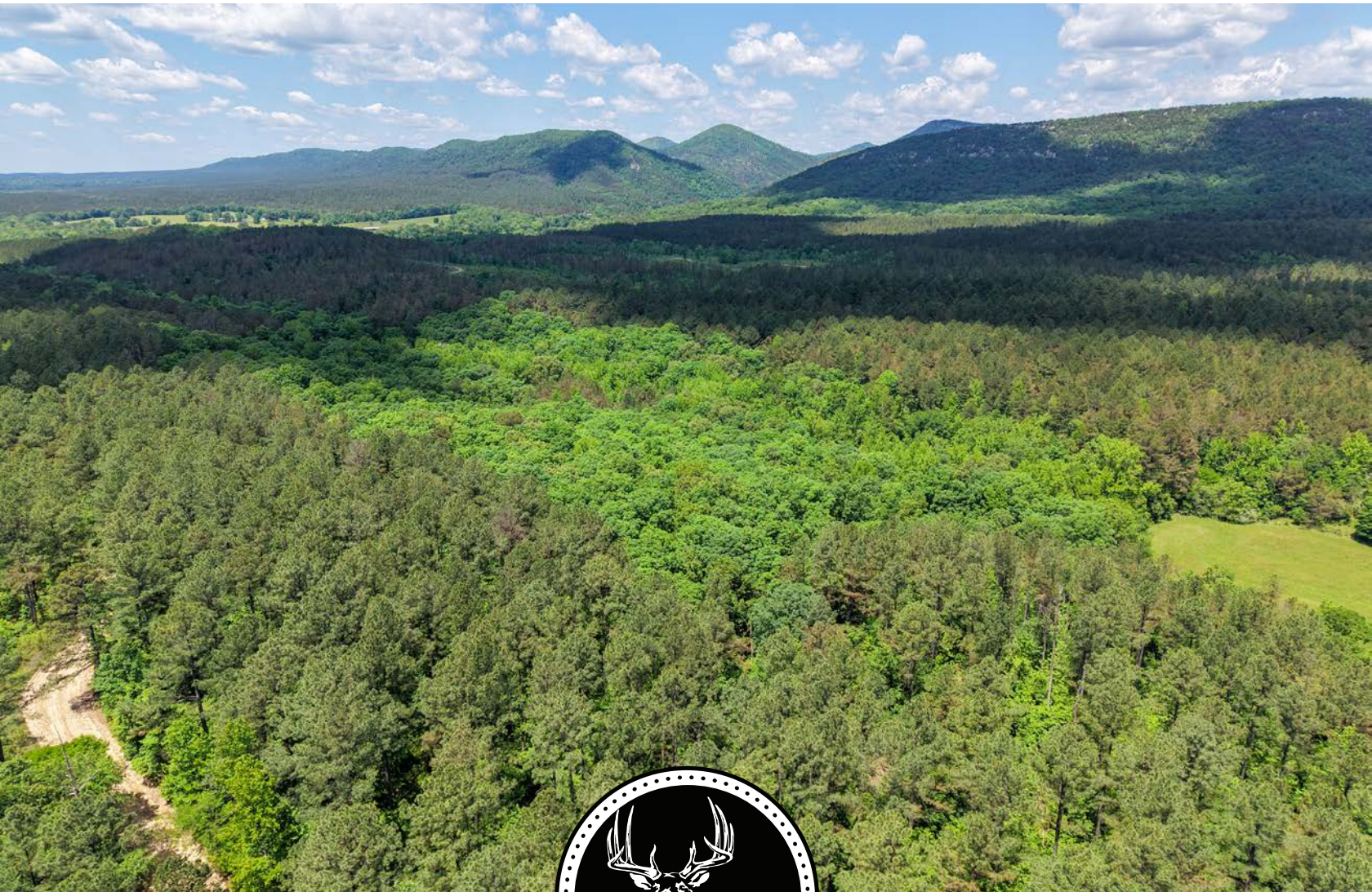


MIDWEST LAND GROUP PRESENTS

20 ACRES IN

PIKE COUNTY ARKANSAS

OBAR LANE, LANGLEY, AR 71952



MidwestLandGroup.com

MIDWEST LAND GROUP IS HONORED TO PRESENT

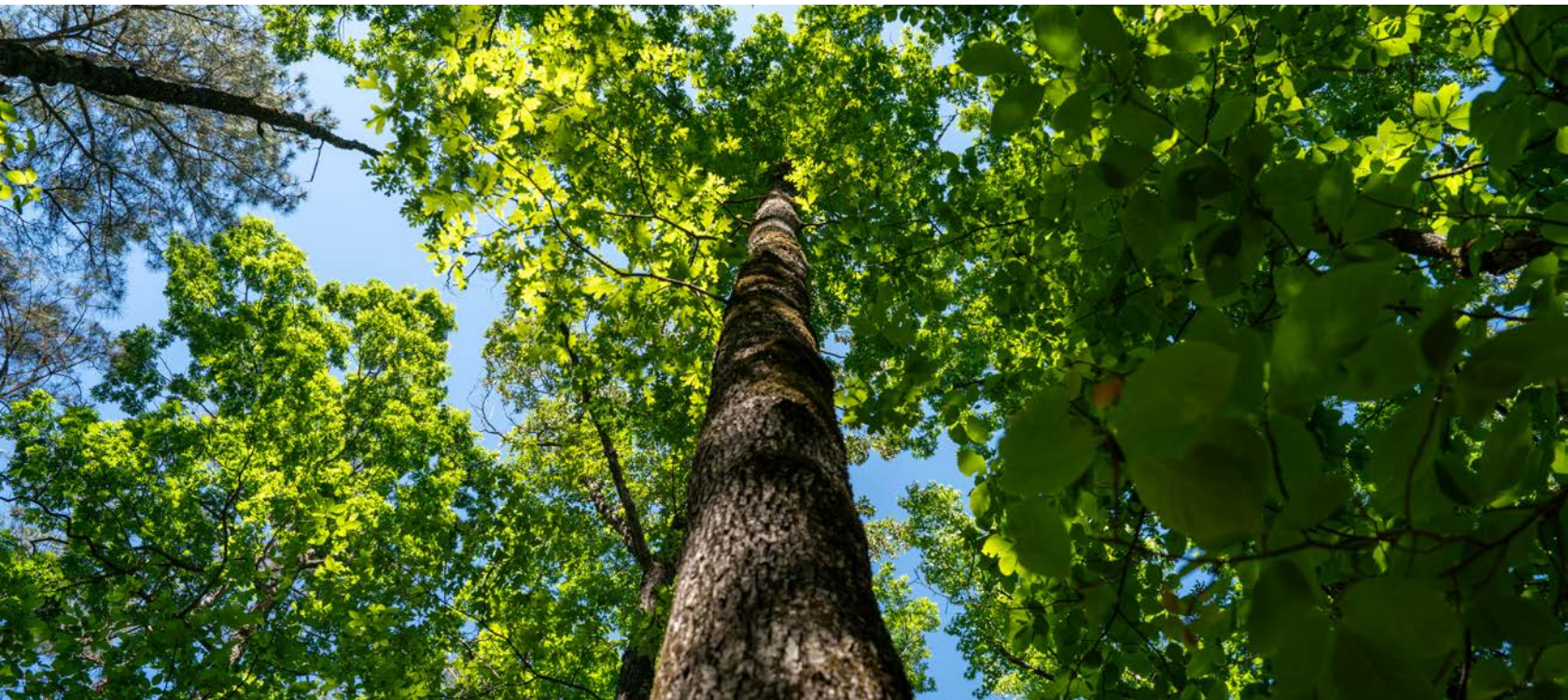
20 +/- ACRES BORDERING NATIONAL FOREST: A PRIME WHITETAIL & BEAR HUNTING RETREAT

Resting in the southern edge of the Ouachita Mountains near Langley, this 20 +/- acre tract offers a truly rare opportunity for hunters, outdoor enthusiasts, or those seeking an escape from the business of everyday life. Bordered on three sides by U.S. Forest Service land, the usable footprint expands from 20 acres to thousands of accessible wilderness acres, providing unmatched privacy and room to roam.

This property is a proven hunting haven, with a strong history of large whitetail deer harvests. Located in Bear Zone 2, it also offers excellent opportunities for black bear hunting. The land is rich with mature oak timber, producing an abundant mast crop that consistently

draws wildlife from the surrounding pine forests. A wet-weather creek runs east to west through the center of the property, eventually feeding into the nearby Little Missouri River.

Conveniently located just 15 minutes from Albert Pike Recreation Area, outdoor adventure is always within reach. The property is also just over an hour from Hot Springs and approximately 1.5 hours from Texarkana, making it an easy getaway from city life. With electric and internet available within a quarter mile, this tract offers a great mix of getaway and nearby amenities, making it ideal for a hunting cabin, recreational retreat, or long-term investment.



PROPERTY FEATURES

COUNTY: **PIKE** | STATE: **ARKANSAS** | ACRES: **20**

- 20 +/--acre wooded tract in Langley
- Bordered on three sides by U.S. Forest Service land, offering access to thousands of additional acres
- Proven hunting property with a strong history of large whitetail deer harvests
- Located in Bear Zone 2 with opportunities for black bear hunting
- Mature oak timber throughout, providing abundant acorn mast production
- Surrounded by pine timber, naturally drawing deer from long distances
- Wet-weather creek runs east to west through the property
- Creek feeds into the nearby Little Missouri River
- Excellent habitat supporting diverse wildlife and game populations
- Just 15 minutes from the Albert Pike Recreation Area for camping, hiking, and outdoor recreation
- Approximately 1 hour from Hot Springs
- About 1.5 hours from Texarkana
- Electric and internet available within ¼ mile
- Ideal for a hunting cabin, recreational getaway, or private retreat



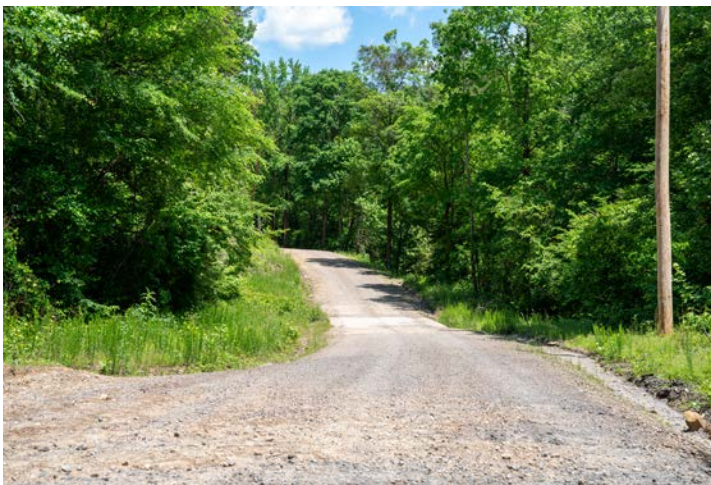
MATURE TIMBER THROUGHOUT



WET-WEATHER CREEK



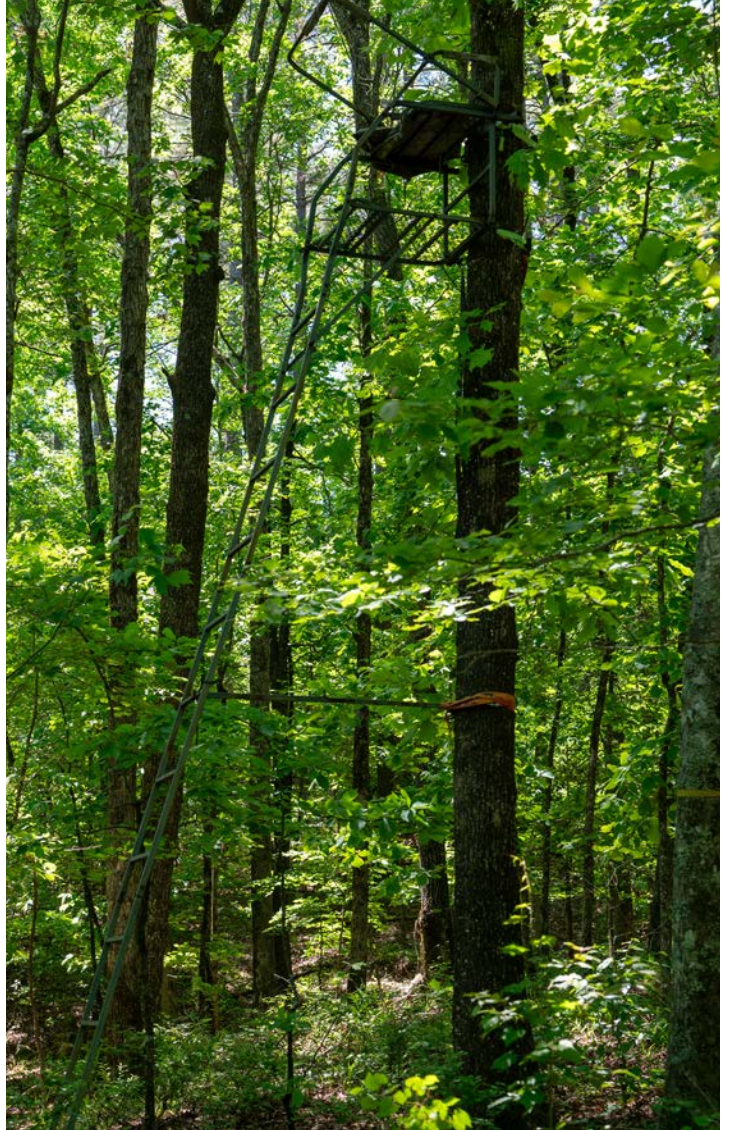
IDEAL FOR HUNTING CABIN, PRIVATE RETREAT



15 MINUTES FROM ALBERT PIKE RECREATION



PROVEN HUNTING PROPERTY



AERIAL MAP



©2026 AgriData, Inc.

Boundary Center: 34° 19' 35.1, -93° 53' 59.17



Maps Provided By:



© AgriData, Inc. 2025 www.AgriDataInc.com

9-5S-27W
Pike County
Arkansas



5/5/2026

TOPOGRAPHY MAP



©2026 AgriData, Inc.



Maps Provided By



© AgriData, Inc. 2025 www.AgriDataInc.com

Source: USGS 1 meter dem

Interval(ft): 10.0

Min: 821.0

Max: 913.6

Range: 92.6

Average: 858.9

Standard Deviation: 21.39 ft

0ft 265ft 530ft

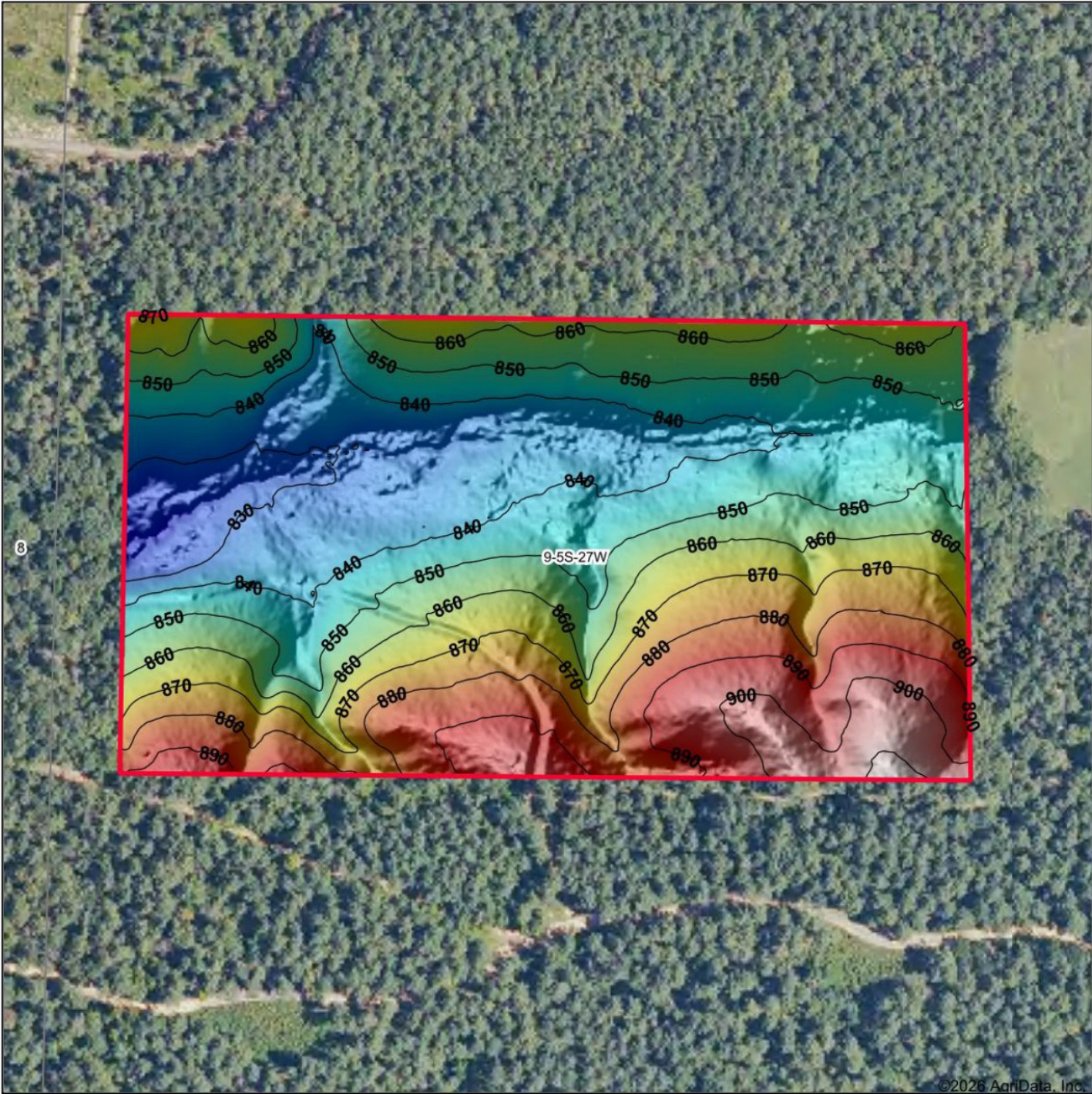


5/5/2026

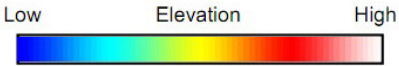
9-5S-27W
Pike County
Arkansas

Boundary Center: 34° 19' 35.1, -93° 53' 59.17

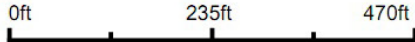
HILLSHADE MAP



©2026 AgriData, Inc.



Source: USGS 1 meter dem
 Interval(ft): 10
 Min: 821.0
 Max: 913.6
 Range: 92.6
 Average: 858.9
 Standard Deviation: 21.39 ft



5/5/2026

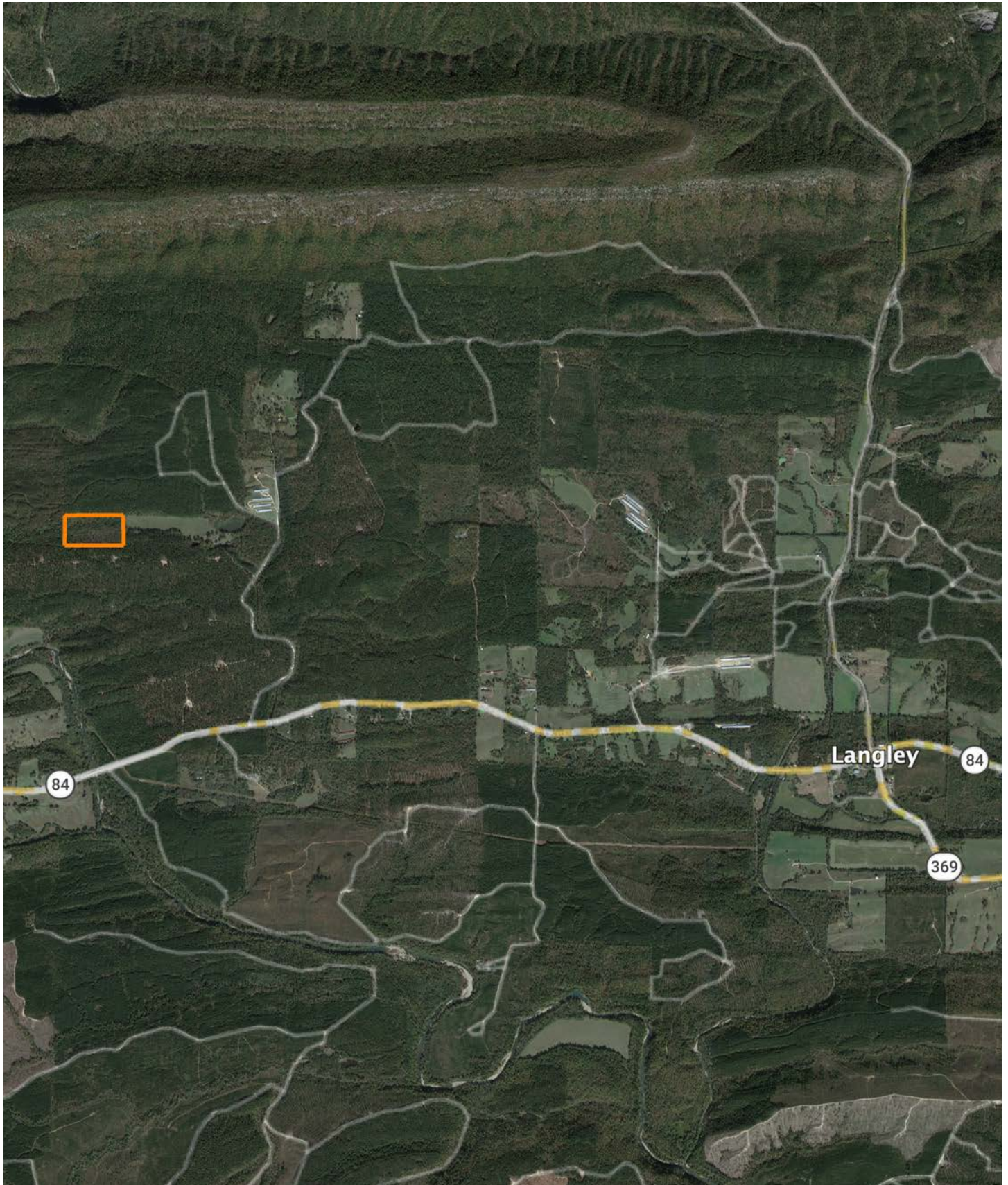
9-5S-27W
Pike County
Arkansas

Boundary Center: 34° 19' 35.1, -93° 53' 59.17



Maps Provided By
surety
 CUSTOMIZED ONLINE MAPPING
 © AgriData, Inc. 2025 www.AgriDataInc.com

OVERVIEW MAP



AGENT CONTACT

Born and raised in Northeast Texas, Kyle Snow grew up with a deep appreciation for land, wildlife, and the generational value rural properties hold. After graduating from Queen City High School, he studied Kinesiology at the University of Texas at Tyler before spending more than a decade in manufacturing management, leading large teams in fast-paced environments. That experience ingrained in him a strong sense of urgency, clear communication, and the importance of building trust - qualities he now brings to serving landowners.

Although Kyle's professional skills define how he operates, his outdoor experiences shape how he sees the land. From hunting whitetail with his father and brother in the oak bottoms of Texas, to baiting bears in the Ouachita Mountains, to duck hunts in flooded timber and bayou wetlands, he has spent his life exploring and understanding the terrain that makes this region special. Today, he shares those same traditions with his children, and his love for the outdoors fuels his passion for helping others achieve their land goals.

A man grounded in faith, family, and service to others, Kyle is committed to guiding clients honestly and humbly. Whether a small recreational getaway or a multi-generation family farm, Kyle approaches every property as if it were his own.



KYLE SNOW, LAND AGENT
903.472.7091
KSnow@MidwestLandGroup.com



MidwestLandGroup.com

This property is being offered by Midwest Land Group, LLC. 913.674.8010. All information provided by Midwest Land Group, LLC or their agents was acquired from sources deemed accurate and reliable, however we do not warrant its accuracy or completeness. Midwest Land Group, LLC assumes no liability for error, omission or investment results. Midwest Land Group, LLC. Licensed in Alabama, Arkansas, Illinois, Indiana, Iowa, Kansas, Kentucky, Louisiana, Minnesota, Mississippi, Missouri, Montana, Nebraska, Ohio, Oklahoma, South Dakota, Tennessee, Texas, Wisconsin, and Wyoming.