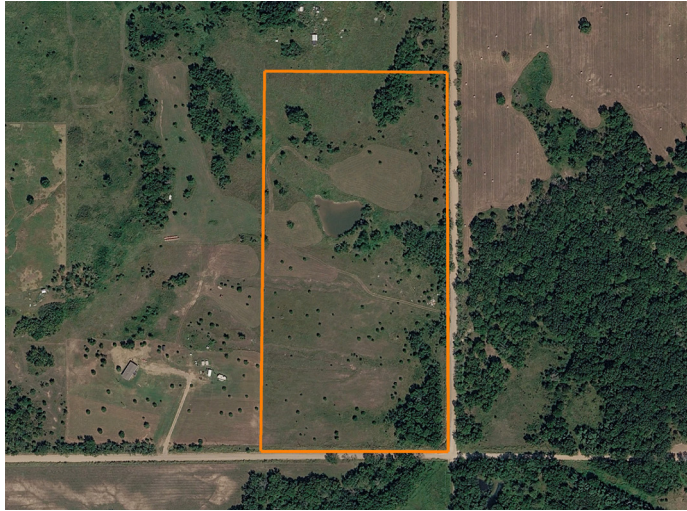


LAND FOR SALE

SCENIC 20 ACRES WITH POND & ELECTRIC - PERFECT HOMESITE



PROPERTY FEATURES

- 20 acres in Okfuskee County
- Pond providing water and scenic views
- Electric available at the road
- Excellent build site potential
- Ideal for a home, cabin, or weekend getaway
- Plenty of room for livestock or small farm setup
- Peaceful rural setting with privacy
- Great mix of open space for multiple uses
- Easy access to nearby towns and amenities
- Perfect for recreation, relaxation, or investment



For more information, contact:

CADEN WITTY, Land Agent

918.552.9093 | CWitty@MidwestLandGroup.com

MidwestLandGroup.com BUYERS, SELLERS, AND LAND – CONNECTED

This property is being offered by Midwest Land Group, LLC, 7111 W. 151st Street, Ste. 27, Overland Park, KS 66223, 913.674.8010.
Licensed in AL, AR, IA, IL, IN, KS, KY, LA, MN, MO, MS, MT, NE, OH, OK, SD, TN, TX, WI, and WY.



COUNTY: **OKFUSKEE**

STATE: **OKLAHOMA**

ACRES: **20**

