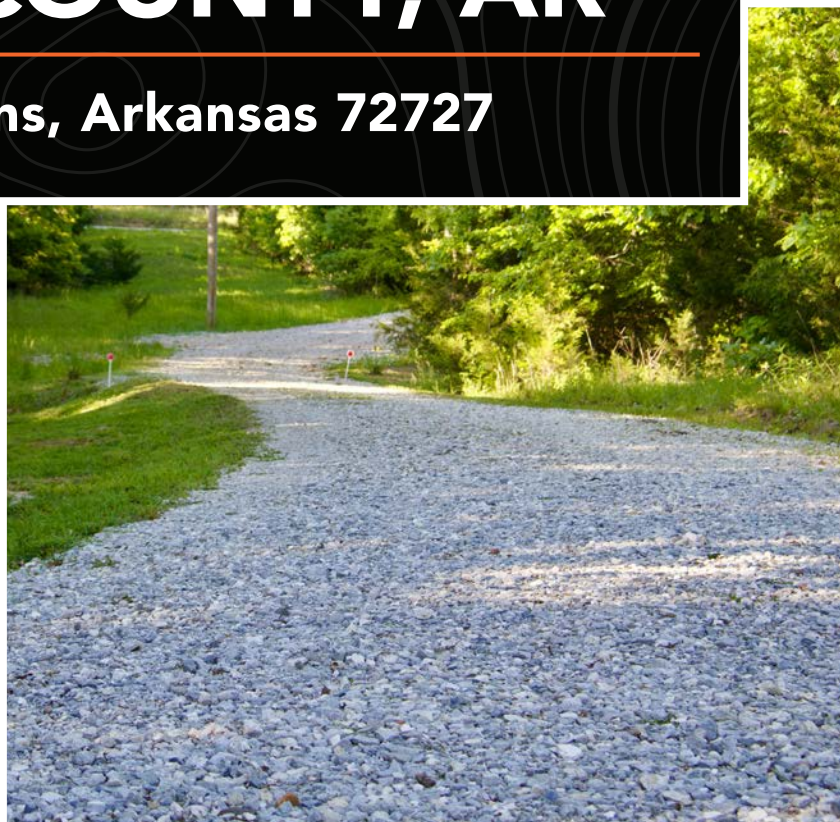


MIDWEST LAND GROUP PRESENTS



**5.32 ACRES**  
**MADISON COUNTY, AR**

**3225 CR 6041, Elkins, Arkansas 72727**



MIDWEST LAND GROUP IS HONORED TO PRESENT

# SPACIOUS HOME & COUNTRY LIVING NEAR ELKINS, ARKANSAS

---

Welcome to your own slice of country living just southeast of Elkins, where space, comfort, and the outdoors come together in a truly special way. Situated on 5.32 +/- acres, this spacious 4,076 +/- square foot home offers room to spread out while still enjoying the peace and privacy of a rural setting.

Built on a solid concrete slab, this thoughtfully designed home features two levels that nearly mirror each other, making it ideal for large families, multi-generational living, or hosting guests. With 5 bedrooms and 3 full bathrooms, there's no shortage of space for everyone to feel at home. Each level includes its own living area and kitchen space, creating flexibility and convenience for entertaining or extended stays.

The upper level welcomes you with natural hardwood floors, warm wood trim finishes, and a beautiful wood-burning fireplace that sets the tone for cozy evenings. The main kitchen is well-appointed with rich wood cabinetry, granite countertops, a deep stainless steel sink, and a generously sized pantry. The master suite, complete with a private ensuite bath, is also located on this level, along with two additional bedrooms and another full bath.

Downstairs, you'll find two more bedrooms, a full bath, a second living area, and a propane fireplace that adds comfort and charm. There's also a storage room on the

east side that could easily be converted into a sixth bedroom or office space. A built-in storm shelter on the lower level provides added peace of mind.

Step outside and take in the beauty of the surrounding acreage from over 800 square feet of covered deck and porch space, which is perfect for relaxing, entertaining, or simply enjoying the quiet countryside. The property also includes an attached two-car garage and a 40'x30' shop equipped with ample outlets and a 220 plug, ready for projects, hobbies, or equipment.

Though tucked away in a scenic rural area, this home is well-connected with Ozarks Electric, OzarksGo high-speed fiber internet, and Madison County Rural Water, so you have modern conveniences without sacrificing the country lifestyle. For outdoor enthusiasts, this location is hard to beat. Ride your buggy or four-wheeler for miles along nearby backroads, take in the stunning scenery, or head to the nearby White River. Plus, you're within 30 minutes of thousands of acres of National Forest, offering endless opportunities for hunting, hiking, camping, and exploring.

With a new roof installed in 2020 and so much to offer both inside and out, this property is more than just a home. It's a place to live, gather, and enjoy all that the Ozarks have to offer.

# PROPERTY FEATURES

COUNTY: **MADISON** | STATE: **ARKANSAS** | ACRES: **5.32**

---

- 4,076 +/- square foot home
- Room to expand
- 5 bed, 3 bath
- 5.32 +/- acres
- Plenty of covered deck & porch space
- En suite master bath
- Natural hardwood floors on the main level
- Natural wood trim throughout
- 2 fireplaces
- Built-in storm shelter
- Attached 2-car garage
- Detached 40'x30' shop
- New roof in 2020
- OzarksGo high-speed fiber internet



# 4,076 +/- SQUARE FOOT HOME

---



# PLENTY OF COVERED DECK & PORCH SPACE

---



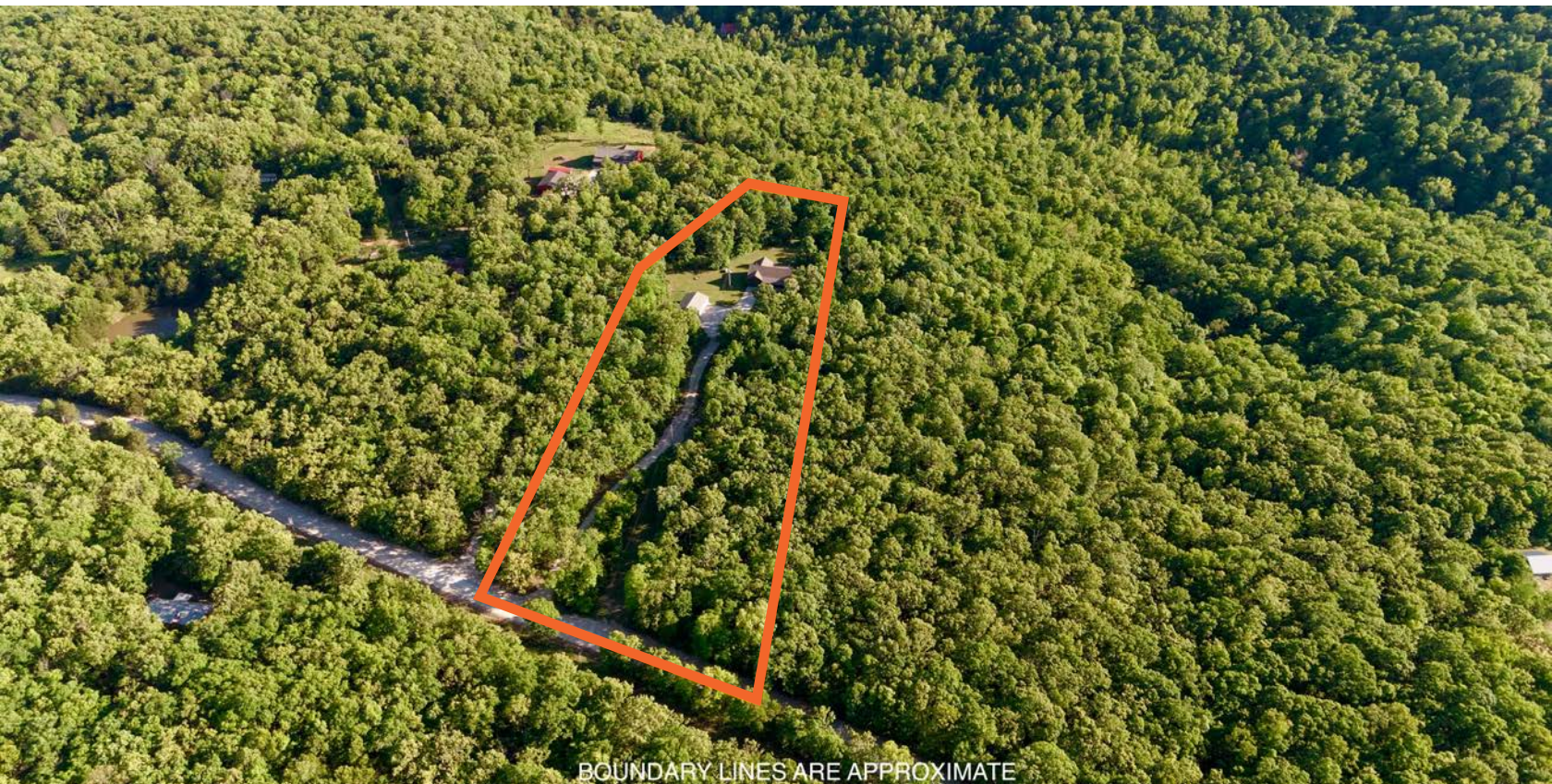
5 BED, 3 BATH

---



5.32 +/- ACRES

---



BOUNDARY LINES ARE APPROXIMATE



# DETACHED 40'X30' SHOP

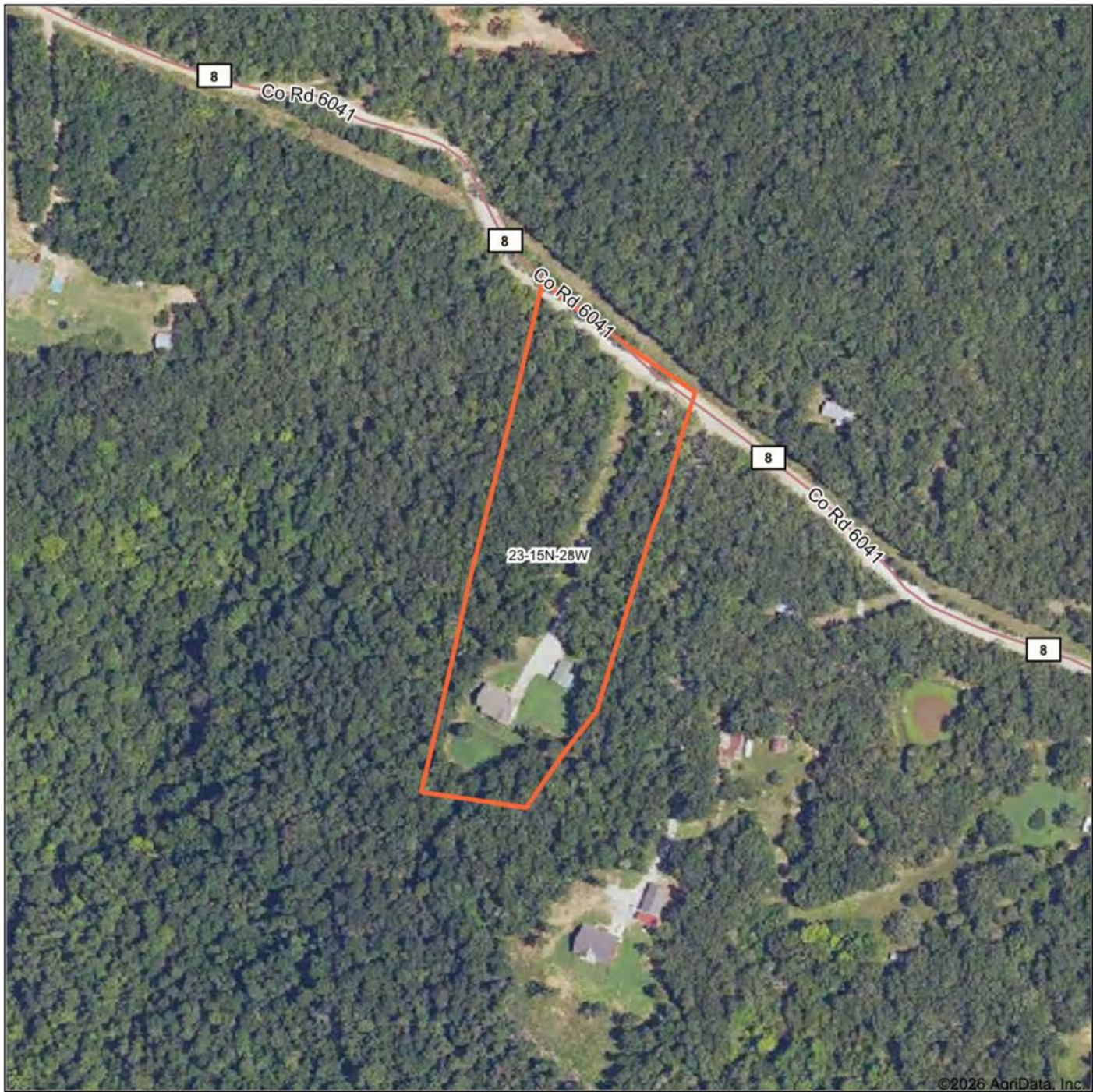


# ADDITIONAL PHOTOS

---



# AERIAL MAP



©2026 AgriData, Inc.

Boundary Center: 35° 57' 31.77, -93° 55' 19.85

0ft 278ft 556ft

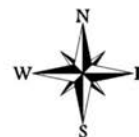


Maps Provided By:



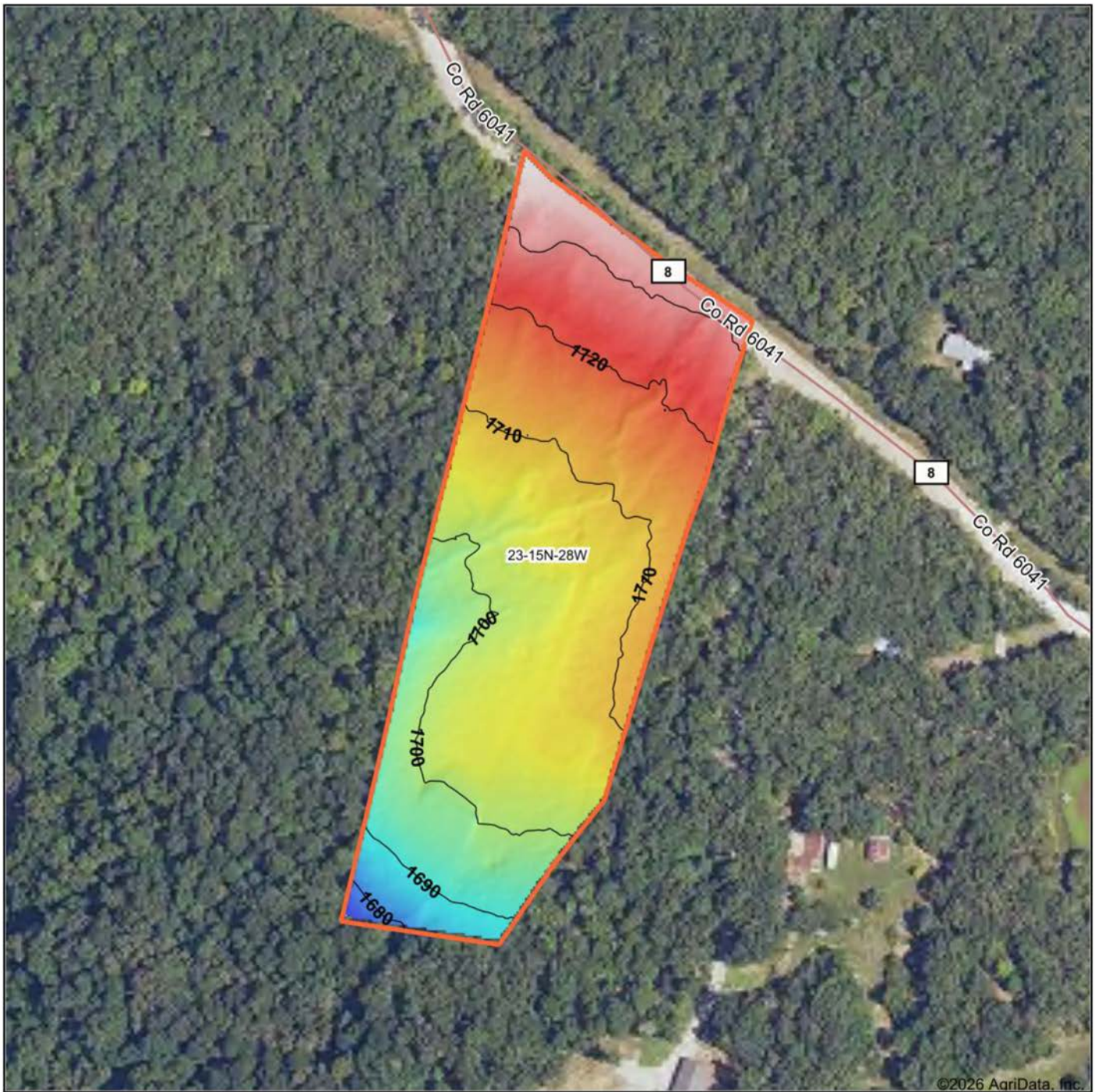
© AgriData, Inc. 2025 www.AgriDataInc.com

**23-15N-28W**  
**Madison County**  
**Arkansas**



4/30/2026

# HILLSHADE MAP



Low Elevation High



Maps Provided By:



© AgriData, Inc. 2025 www.AgriDataInc.com

Source: USGS 1 meter dem

Interval(ft): 10

Min: 1,671.9

Max: 1,738.6

Range: 66.7

Average: 1,708.6

Standard Deviation: 12.01 ft

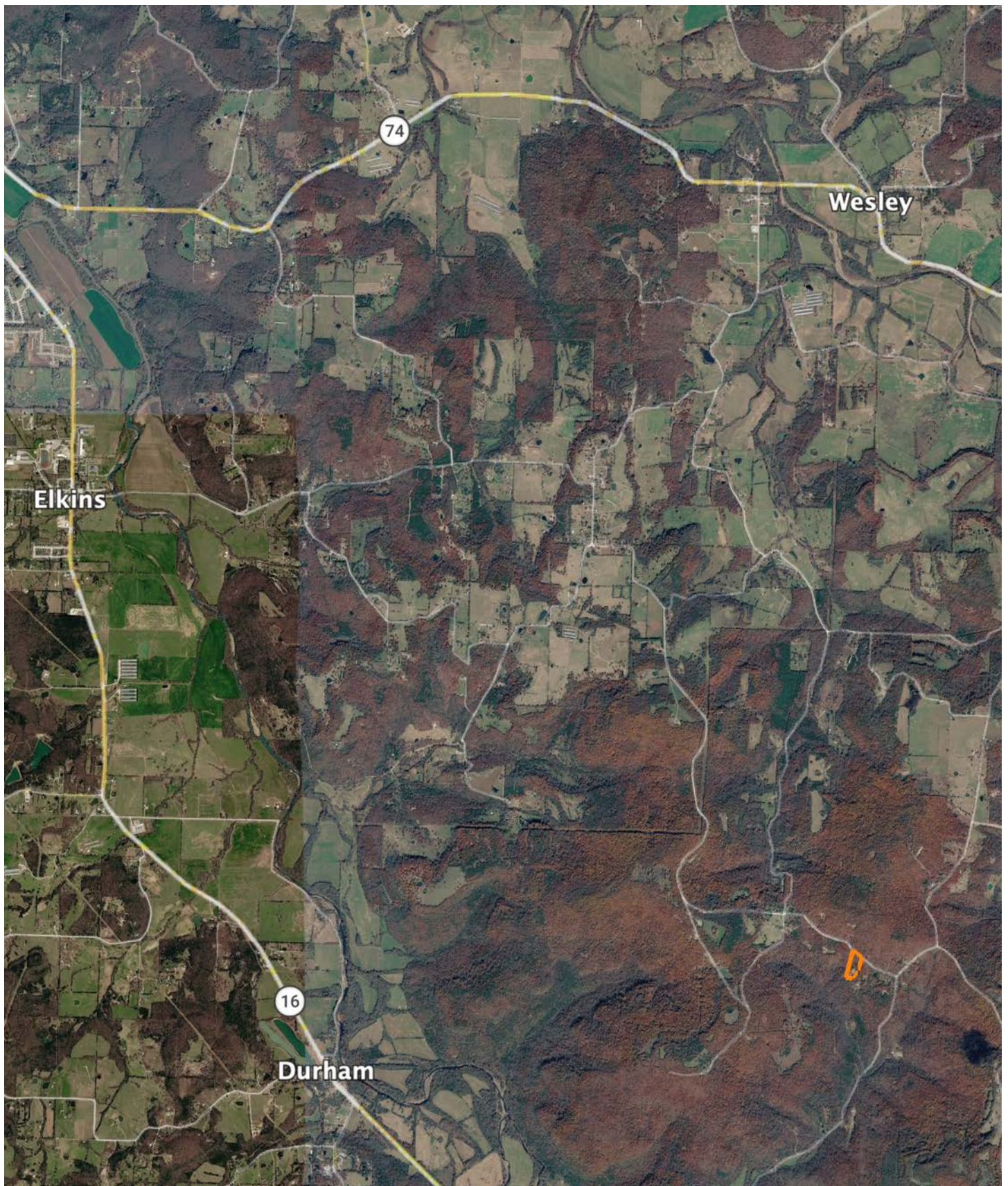


4/30/2026

**23-15N-28W**  
**Madison County**  
**Arkansas**

Boundary Center: 35° 57' 31.77, -93° 55' 19.85

# OVERVIEW MAP



# AGENT CONTACT

Chris Shadrick, an esteemed land agent at Midwest Land Group, seamlessly merges family values with a profound understanding of land sales. Proudly calling Elkins, Arkansas, home alongside his lovely wife, Nikki, and their children, Payten, Axel, and Boone, Chris embodies integrity and dedication in serving his clients.

Hailing from Fayetteville, Arkansas, Chris's roots run deep within the region he passionately serves. His extensive background in automotive sales and management equips him with invaluable skills in relationship building and maintenance—skills cultivated from years of learning the true value of hard work.

Driven by his love for the outdoors and a desire to forge genuine connections with his clients, Chris's transition to land sales was a natural progression. His profound connection to the land stems from his passion for public land bowhunting, granting him unparalleled insights into wildlife behavior and terrain intricacies.

As an ordained minister and active member of New Beginnings Baptist Church, Chris exemplifies integrity and values in every client interaction. Choose Chris Shadrick as your trusted guide in your land journey, where unwavering family values, integrity, and expertise converge to transform your dreams into reality.



## CHRIS SHADRICK

LAND AGENT

**479.487.1647**

[CShadrick@MidwestLandGroup.com](mailto:CShadrick@MidwestLandGroup.com)



## MidwestLandGroup.com

This property is being offered by Midwest Land Group, LLC. 913.674.8010. All information provided by Midwest Land Group, LLC or their agents was acquired from sources deemed accurate and reliable, however we do not warrant its accuracy or completeness. Midwest Land Group, LLC assumes no liability for error, omission or investment results. Midwest Land Group, LLC. Licensed in Alabama, Arkansas, Illinois, Indiana, Iowa, Kansas, Kentucky, Louisiana, Minnesota, Mississippi, Missouri, Montana, Nebraska, Ohio, Oklahoma, South Dakota, Tennessee, Texas, Wisconsin, and Wyoming.