

MIDWEST LAND GROUP PRESENTS

0.27 ACRES IN

HENRY COUNTY MISSOURI



MidwestLandGroup.com

MIDWEST LAND GROUP IS HONORED TO PRESENT

REMODELED RANCH HOME IN CLINTON, MISSOURI

You will fall in love with the charm of this amazing, remodeled house in the heart of Clinton, Missouri. The home sits along Green Street and 6th Street, which is just minutes away from the square, schools, and other amenities throughout the town.

The three bedroom, one bathroom ranch home has been renovated throughout with modern finishes. The family room and dining area offers plenty of space for gatherings and entertainment. Enjoy the kitchen with newer appliances and a sink that overlooks the backyard. The spacious bedrooms have newer carpet and are close to the large full bathroom with a double vanity. The home features a partial basement which

is great for additional storage and a storm shelter. Outside, you will enjoy the large yards in the front and back. The backyard features an awesome covered porch and parking area. Another bonus is the detached 1-car garage and storage space. Mature trees around the home and yard provide plenty of shade throughout the day. It sets up perfectly for outdoor enjoyment! The home even has a newer 3-year-old roof. Talk about a move-in-ready setup!

Newly remodeled homes in great shape like this one don't come around often. Contact Skyler Wirsig at (816) 500-0168 for more information or to schedule a showing.

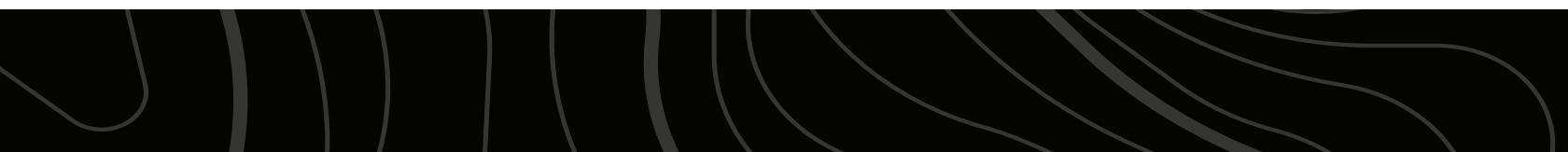
PROPERTY FEATURES

COUNTY: **HENRY** | STATE: **MISSOURI** | ACRES: **0.27**

- Remodeled ranch home
- Built in 1960
- 3 bed, 1 bath
- 1,364 +/- square feet
- Great layout
- Spacious family room
- Partial basement
- Covered back porch
- Covered parking area
- Detached garage
- 3-year-old roof
- Large yard
- Shade trees
- Just minutes from schools and other amenities
- Close to Truman Lake

REMODELED RANCH HOME

The three bedroom, one bathroom ranch home has been renovated throughout with modern finishes. The family room and dining area offers plenty of space for gatherings and entertainment.



3 BEDROOM, 1 BATH



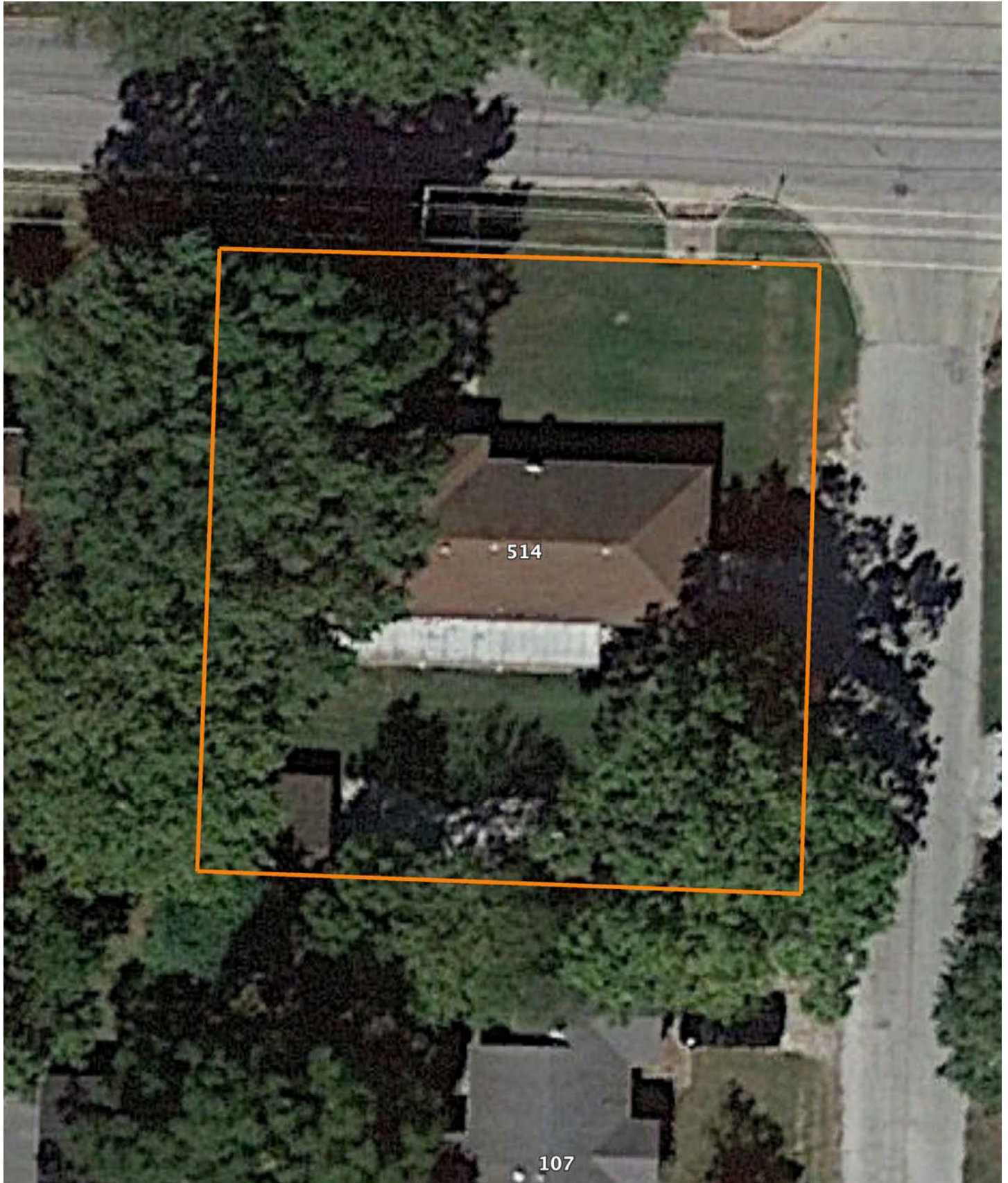
DETACHED GARAGE



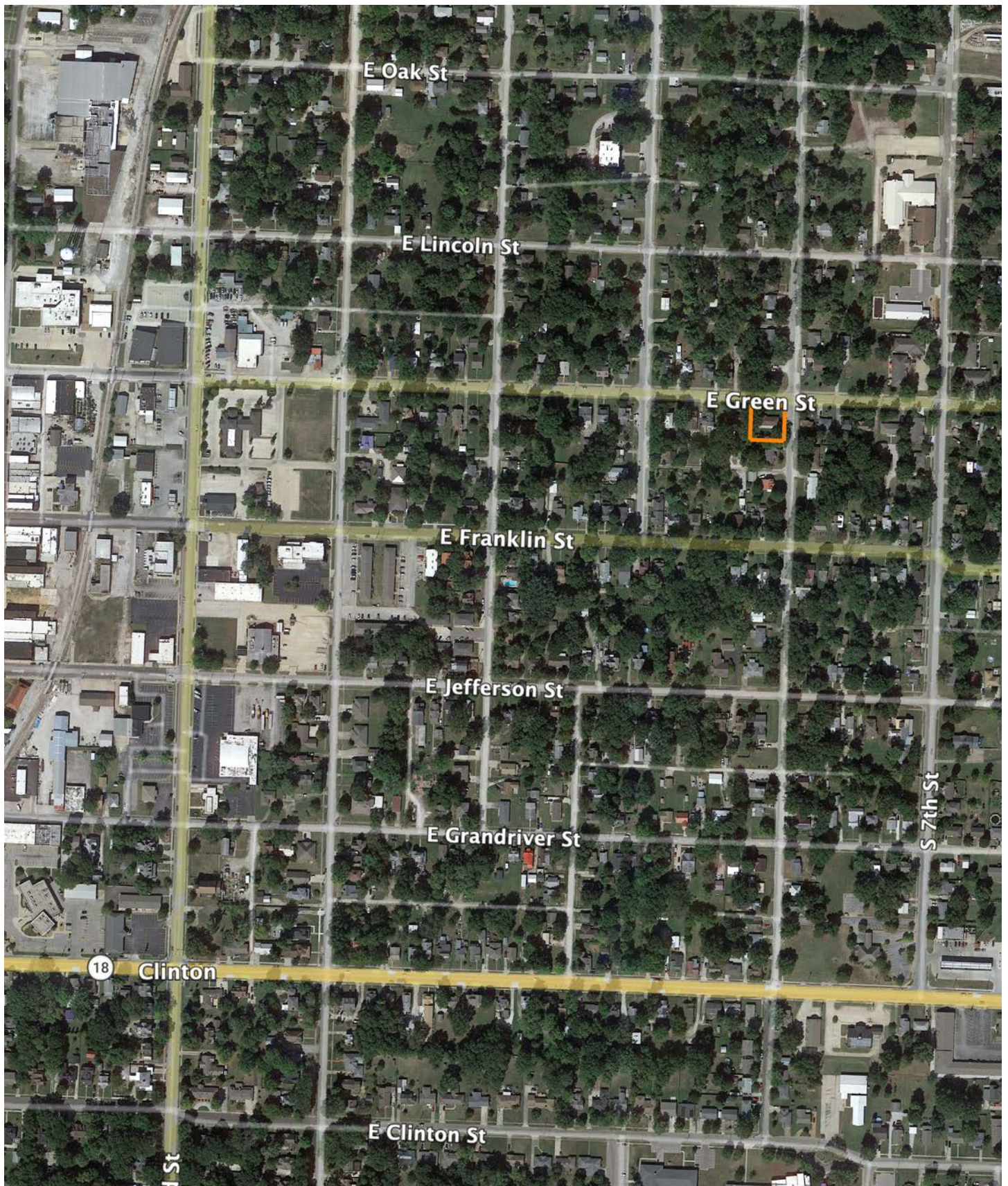
COVERED BACK PORCH



AERIAL MAP



OVERVIEW MAP



AGENT CONTACT

Skyler Wirsig is a seasoned steward of the land with a firm focus on developing and managing agricultural properties. Over 15 years, he has gained invaluable experience filming and hunting for the Outdoor Channel's Heartland Bowhunter, which has earned several accolades under his watch.

Hailing from Kansas City, Missouri, Skyler graduated from William Jewell College with degrees in Business Administration and Critical Thought & Inquiry. His previous role as an operations manager, handling sales and customer relationships across 20 countries, enhances his effectiveness as a real estate agent.

A dedicated sportsman, Skyler proudly holds the Archery Missouri State Record for an 8-point whitetail. Despite his professional accomplishments, he remains approachable, enjoying fishing, sports, and travel with his family. Skyler also volunteers for the Wounded Warriors in Action Foundation. Residing on his farm in Grain Valley, Missouri, with his wife and sons, Skyler brings a wealth of expertise and a down-to-earth attitude to land sales in the Midwest.



SKYLER WIRSIG

LAND AGENT

816.500.0168

SWirsig@MidwestLandGroup.com



MidwestLandGroup.com

This property is being offered by Midwest Land Group, LLC. 913.674.8010. All information provided by Midwest Land Group, LLC or their agents was acquired from sources deemed accurate and reliable, however we do not warrant its accuracy or completeness. Midwest Land Group, LLC assumes no liability for error, omission or investment results. Midwest Land Group, LLC. Licensed in Alabama, Arkansas, Illinois, Indiana, Iowa, Kansas, Kentucky, Louisiana, Minnesota, Mississippi, Missouri, Montana, Nebraska, Ohio, Oklahoma, South Dakota, Tennessee, Texas, Wisconsin, and Wyoming.