

# LAND FOR SALE

## PICTURESQUE HARPER COUNTY FARM AND WIND



### PROPERTY FEATURES

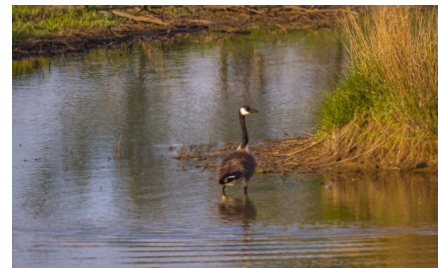
- 6 miles south of Zenda
- Less than 2 miles from blacktop
- 156 acres of crop land
- Excellent Upland and deer hunting
- Producing wind rights included
- Sellers mineral rights included
- Excellent access
- Pond
- Solar well
- Good fencing and gated entry



COUNTY: **HARPER**

STATE: **KANSAS**

ACRES: **241**



For more information, contact:

**COLE SCHUMACHER**, Land Agent

785.624.2191 | [CSchumacher@MidwestLandGroup.com](mailto:CSchumacher@MidwestLandGroup.com)

**MidwestLandGroup.com** BUYERS, SELLERS, AND LAND – CONNECTED

This property is being offered by Midwest Land Group, LLC, 7111 W. 151st Street, Ste. 27, Overland Park, KS 66223, 913.674.8010. Licensed in AL, AR, IA, IL, IN, KS, KY, LA, MN, MO, MS, MT, NE, OH, OK, SD, TN, TX, WI, and WY.

