

MIDWEST LAND GROUP PRESENTS

35 ACRES IN

GREENWOOD COUNTY KANSAS



MidwestLandGroup.com

MIDWEST LAND GROUP IS HONORED TO PRESENT

TURN-KEY HUNTING RETREAT WITH FURNISHED LOG CABIN NEAR SEVERY, KANSAS

This is the kind of small-acreage property that hunts big. Located near Severy, Kansas, this turn-key 35 +/- acre hunting setup offers outstanding whitetail and turkey hunting with everything already in place to start enjoying it on day one. The centerpiece of the property is a 1,700 square foot lofted log cabin being sold fully furnished. The cabin offers a comfortable hunting camp atmosphere while still leaving room for a new owner to add their own finishing touches and personal style. There are also two other outbuildings that can be used for storage for equipment. The seller is also offering some equipment, such as a 4x4 SUV, SXS, and a zero-turn mower, to be purchased with the property.

Whether you're looking for a weekend getaway, hunting headquarters, or a year-round escape, this property is built for making memories. The hunting setup is second to none for a tract this size. With multiple stand locations, feeders, and wind setups, this tract will hunt great year-round. The property has also been meticulously maintained and features an established year-round protein feeding program. Multiple box blinds and feeders are already in place and will pass with the sale to the new owner. Deer and turkey numbers in this area are great and have been managed over the years.



PROPERTY FEATURES

COUNTY: **GREENWOOD** | STATE: **KANSAS** | ACRES: **35**

- 1,700 sq. ft. log cabin
- 2 shops
- 4 box blinds
- 4 feeders
- Food plots
- Planted switch grass
- Established trails
- Established year-round feed program
- 60 miles from Wichita, KS
- 120 miles from Tulsa, OK



1,700 SQ. FT. LOG CABIN



ADDITIONAL INTERIOR PHOTOS



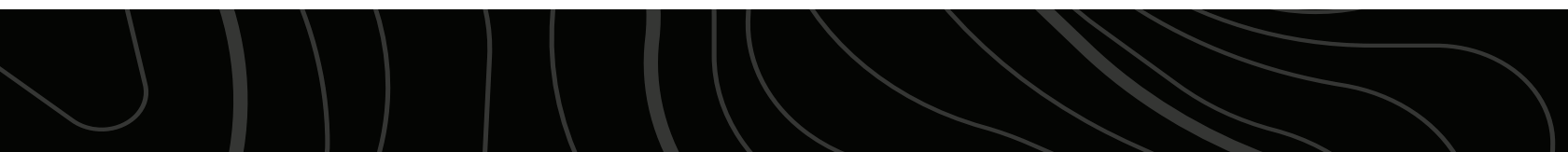
2 SHOPS



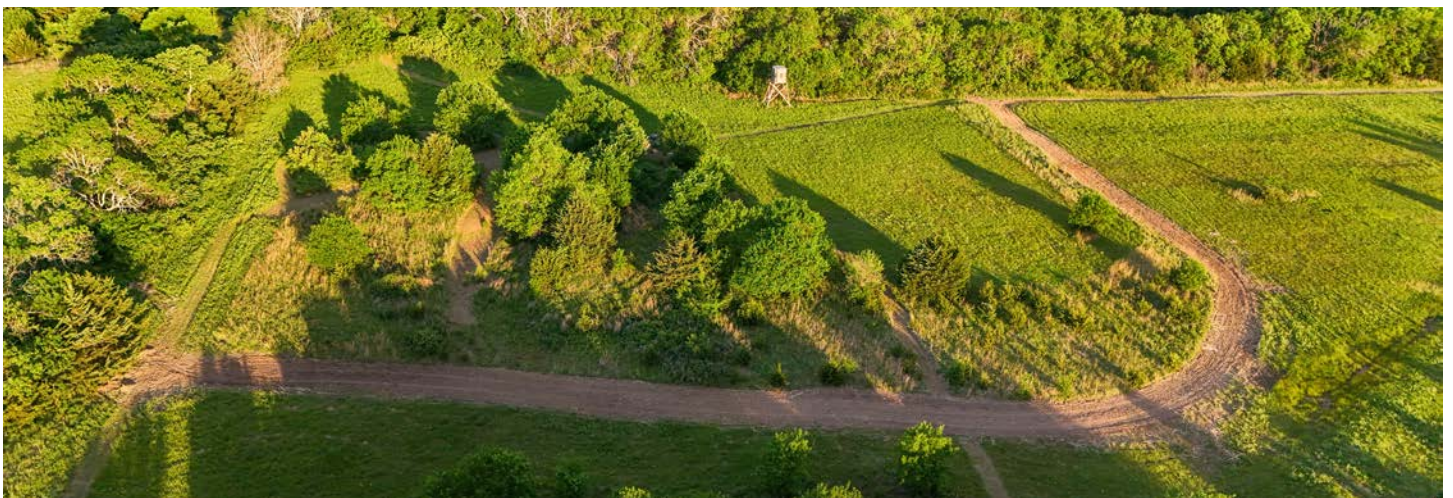
4 BOX BLINDS



35 +/- ACRES



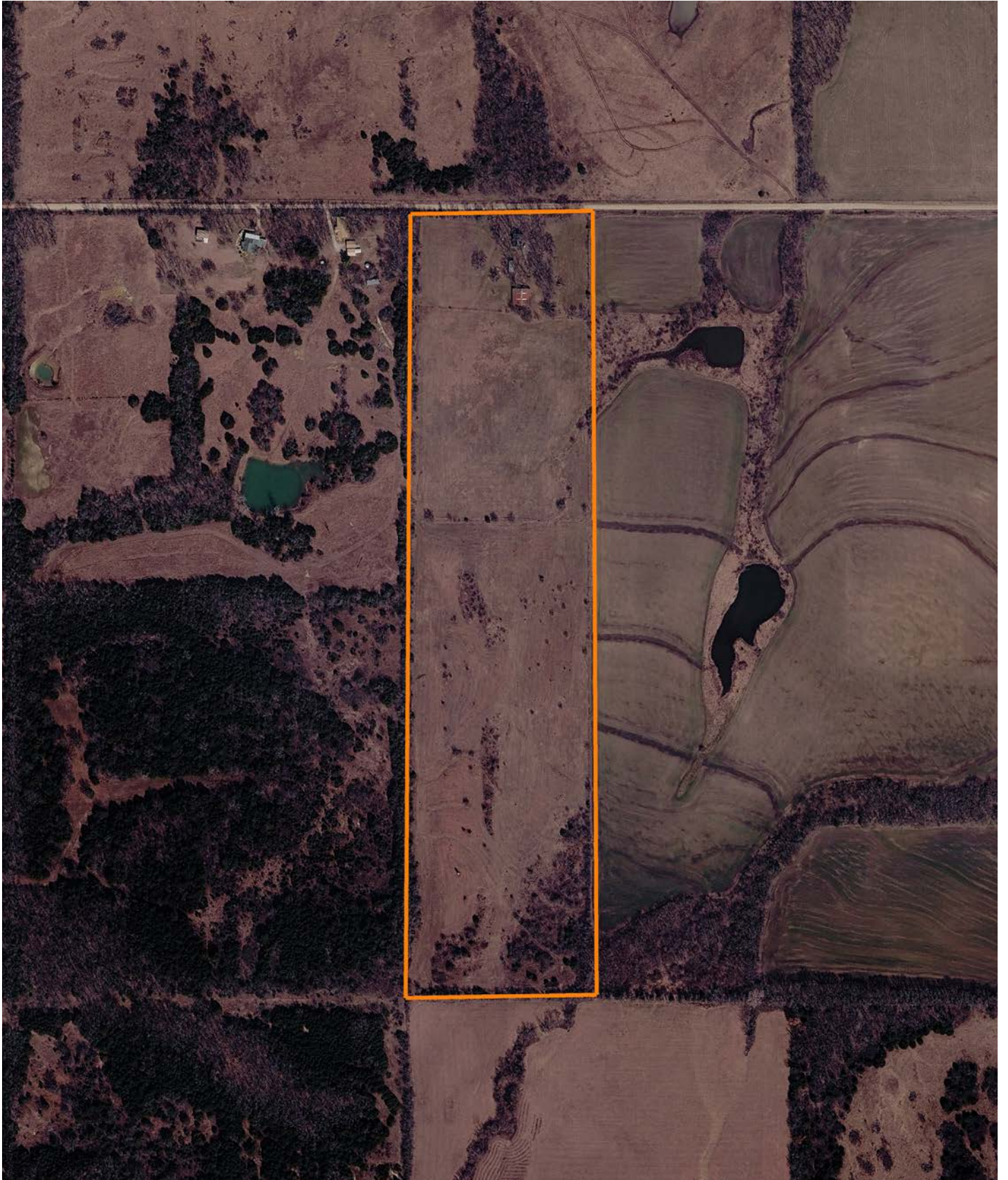
ESTABLISHED TRAILS & FOOD PLOTS



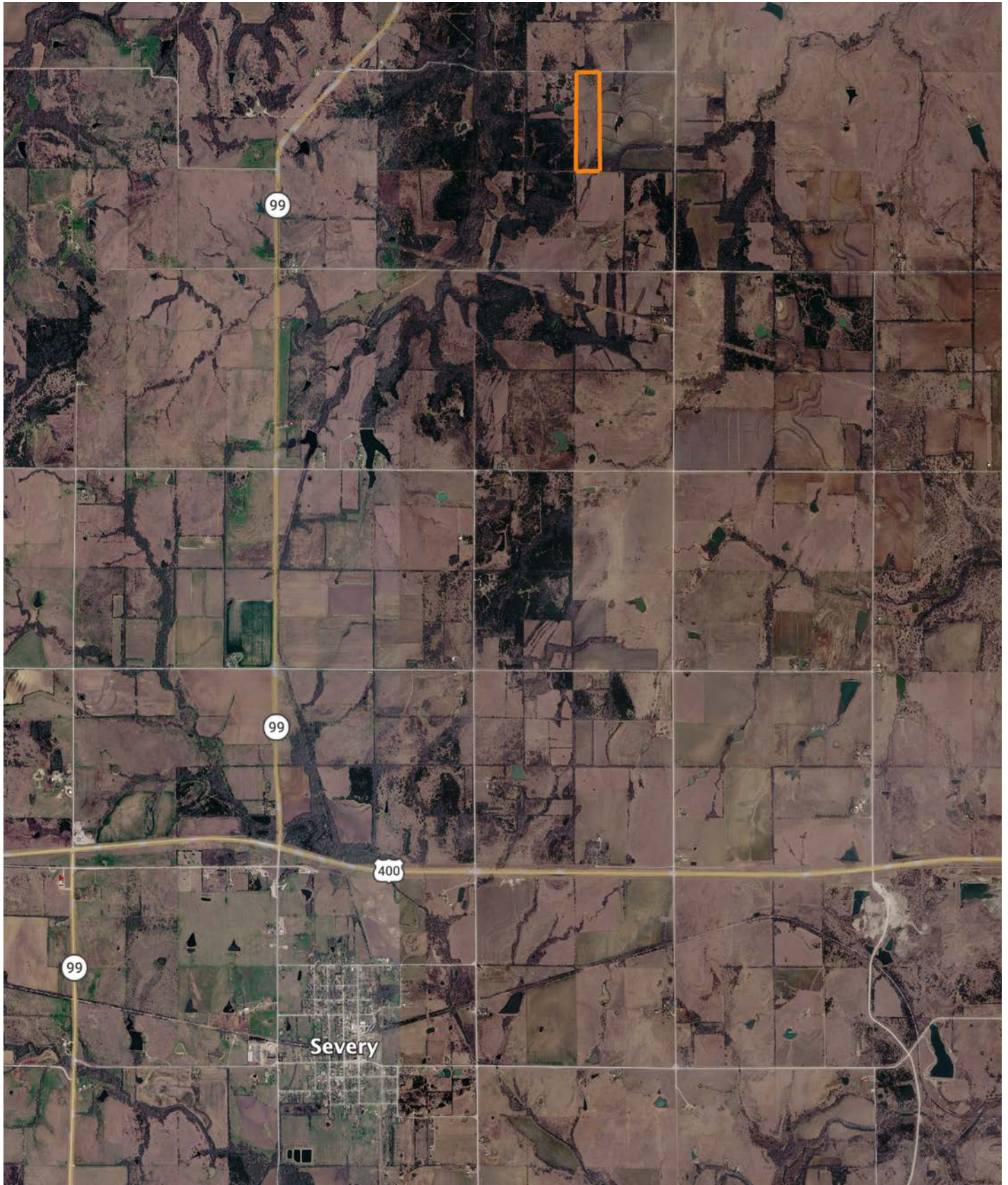
TRAIL CAM PICTURES



AERIAL MAP



OVERVIEW MAP



AGENT CONTACT

Ben Jacks has been an avid outdoorsman since he was a boy. His dad would take him and his brother out to hunt and fish every chance he got. Between that and years of bow hunting, Ben learned the process of managing hunting properties. He loves to assess a property and find the potential in a piece of land that someone else might not have seen. Ben was born on a military base in North Carolina and raised in northeast Oklahoma. While in school, he worked on a ranch, where he grew a great respect for farmers and ranchers. He moved to Kansas for college and to continue his baseball career. He went to Neosho County Community College and graduated from Emporia State University, having played baseball at each.

After helping a friend acquire a piece of property, he caught the land real estate bug and hasn't looked back once since. Driven by his passion to help people, Ben offers clients a hard-working, trustworthy, and dedicated agent who will help them throughout the entire process. When he's not working or spending time with family, you can find him out in the woods hunting, fishing, managing hunting properties, or golfing. He's a member of Ducks Unlimited, QDMA, and the First Baptist Church in Chanute, Kansas, where he resides with his son Gunner and two large, active dogs. Contact Ben today to experience the Midwest Land Group difference!



BEN JACKS, LAND AGENT
620.605.3175
BJacks@MidwestLandGroup.com



MidwestLandGroup.com

This property is being offered by Midwest Land Group, LLC. 913.674.8010. All information provided by Midwest Land Group, LLC or their agents was acquired from sources deemed accurate and reliable, however we do not warrant its accuracy or completeness. Midwest Land Group, LLC assumes no liability for error, omission or investment results. Midwest Land Group, LLC. Licensed in Alabama, Arkansas, Illinois, Indiana, Iowa, Kansas, Kentucky, Louisiana, Minnesota, Mississippi, Missouri, Montana, Nebraska, Ohio, Oklahoma, South Dakota, Tennessee, Texas, Wisconsin, and Wyoming.