

MIDWEST LAND GROUP PRESENTS

**.2 ACRES IN**

---

# **GREENE COUNTY MISSOURI**

**416 BEAVER TAIL ROAD, ASH GROVE, MO 65604**



**[MidwestLandGroup.com](http://MidwestLandGroup.com)**

MIDWEST LAND GROUP IS HONORED TO PRESENT

# NEW CONSTRUCTION HOME IN GREENE COUNTY'S LATEST CREEKSIDE MEADOWS SUBDIVISION

Welcome to Creekside Meadows Subdivision, where modern style, quality craftsmanship, and small-town charm come together. Sitting on a spacious corner lot, this brand-new 4 bedroom, 2 bathroom home with a 3-car garage offers 1,667 square feet of thoughtfully designed living space that is sure to impress from the moment you walk in. The open-concept layout was made for gathering, featuring a bright kitchen with white shaker cabinetry, granite countertops, and seamless flow into the living area anchored by a natural gas stone fireplace. The split-bedroom floor plan provides privacy

and functionality, while the spacious primary suite feels like a retreat with tray ceilings, a large walk-in closet, and a tiled shower with rich dark accents. As the very first completed home in Creekside Meadows, this is a unique opportunity to be part of Ash Grove's newest growing community from the start. Light subdivision restrictions are in place to help maintain the beauty and value of the neighborhood. With quality new construction and a great layout, this home is one you'll want to see in person!



## PROPERTY FEATURES

COUNTY: **GREENE** | STATE: **MISSOURI** | ACRES: **.2**

- Brand new subdivision
- New construction home
- 4 bedrooms and 2 bathrooms
- 3-car garage
- Natural gas fireplace
- Split floor plan
- Granite countertops
- Corner lot
- Large walk-in master closet
- Open concept living space
- Ash Grove School District

# NEW CONSTRUCTION

---



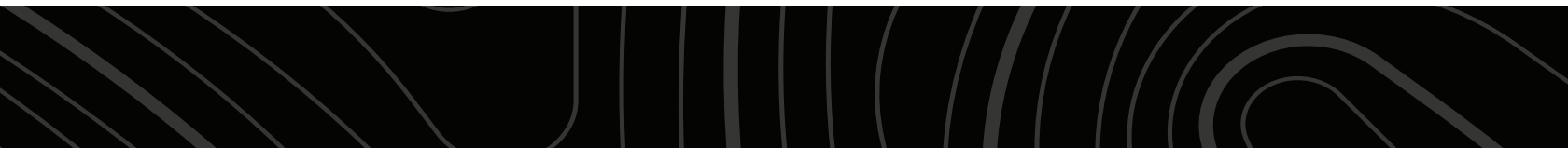
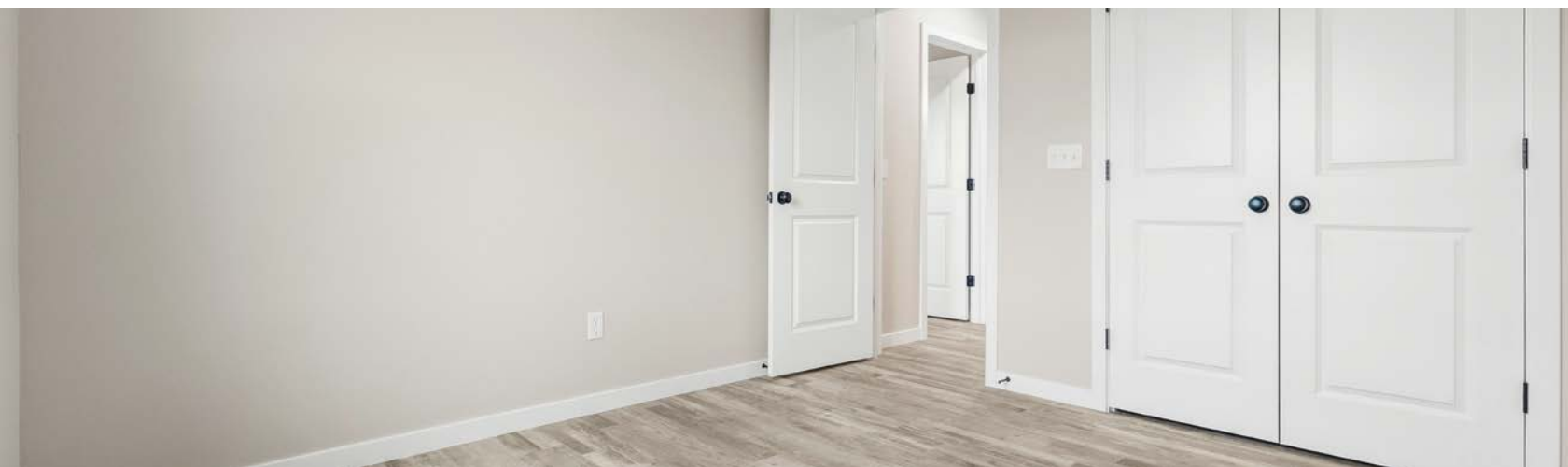
# OPEN CONCEPT LIVING SPACE

---



# 4 BEDROOMS AND 2 BATHROOMS

---



# ADDITIONAL PHOTOS



# AERIAL MAP



©2026 AgriData, Inc.

Boundary Center: 37° 19' 22.57, -93° 35' 37.07



Maps Provided By:



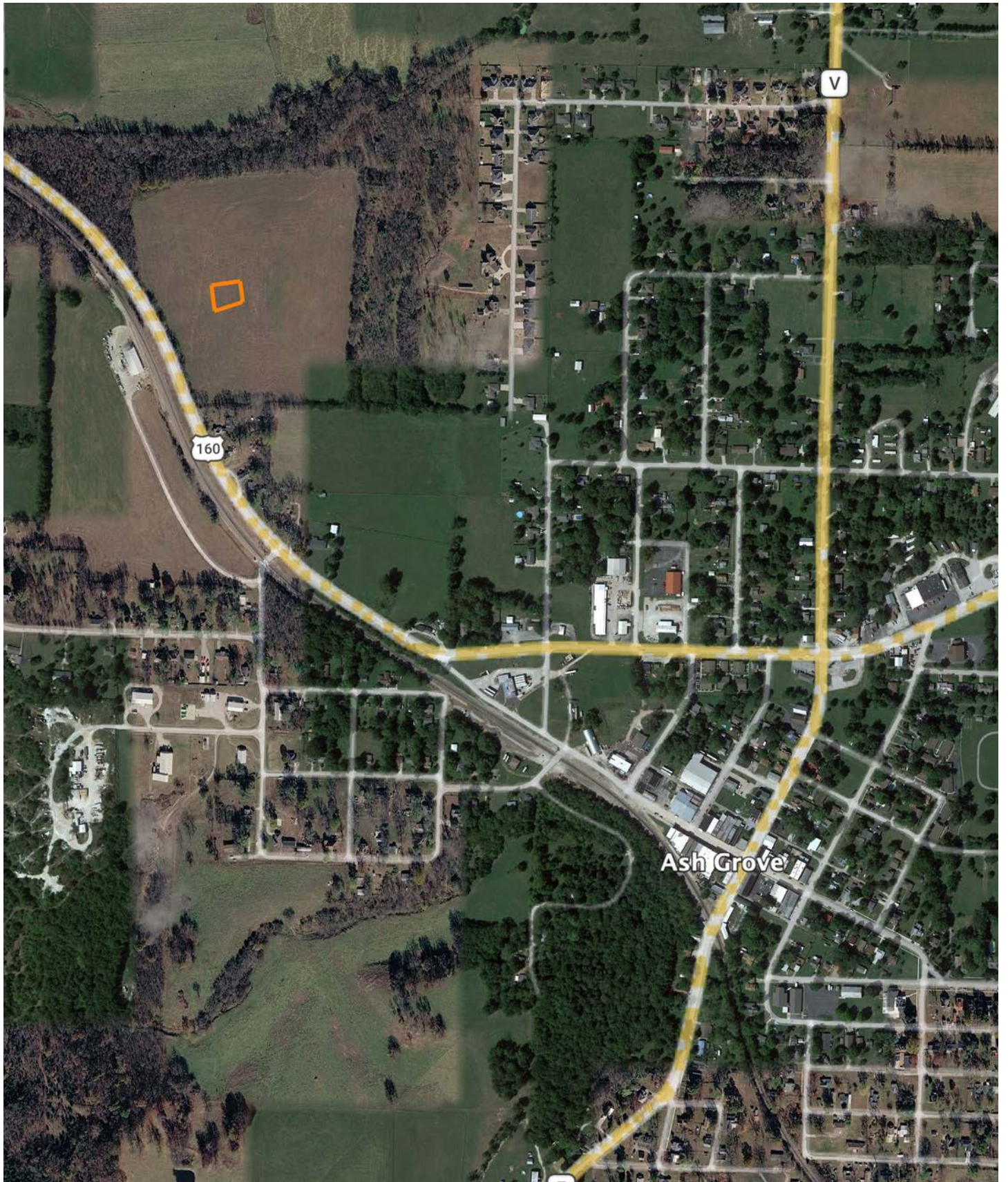
© AgriData, Inc. 2025 www.AgriDataInc.com

20-30N-24W  
Greene County  
Missouri



5/11/2026

# OVERVIEW MAP



# AGENT CONTACT

Amber Miller, a Missouri native, brings a wealth of experience and passion to Midwest Land Group. Hailing from Springfield and now residing in Long Lane, Missouri, with her husband Logan, and their sons, Case and Cole, Amber's roots run deep in the region she serves, particularly in Southwest Missouri. Her educational background in Agriculture Business from Missouri State University, coupled with a minor in Finance and Marketing, equips her with a solid foundation for navigating the complexities of real estate transactions.

Amber earned her real estate license in 2018, showcasing her unwavering commitment to excellence in the industry. Amber's journey into land sales is deeply personal, rooted in her upbringing on a small farm in Dade County. From hunting to antique shopping and sourdough baking, she embodies the essence of rural living. Her active involvement in community organizations like Pisgah Baptist Church, Dallas County Elementary School PTO, and Buffalo Women's Professional Development group underscores her commitment to serving others beyond real estate transactions.

What sets Amber apart is her genuine passion for real estate and her unwavering dedication to her clients. Whether it's leveraging her deep understanding of land management or going the extra mile to exceed expectations, Amber's clients trust her to guide them through their land journey with integrity and expertise. With her husband Logan also on board at Midwest Land Group, the Millers offer a dynamic duo poised to deliver unparalleled service and results in land sales across Southwest Missouri.



## AMBER MILLER

LAND AGENT

**417.322.6995**

AMiller@MidwestLandGroup.com



## MidwestLandGroup.com

This property is being offered by Midwest Land Group, LLC. 913.674.8010. All information provided by Midwest Land Group, LLC or their agents was acquired from sources deemed accurate and reliable, however we do not warrant its accuracy or completeness. Midwest Land Group, LLC assumes no liability for error, omission or investment results. Midwest Land Group, LLC. Licensed in Alabama, Arkansas, Illinois, Indiana, Iowa, Kansas, Kentucky, Louisiana, Minnesota, Mississippi, Missouri, Montana, Nebraska, Ohio, Oklahoma, South Dakota, Tennessee, Texas, Wisconsin, and Wyoming.