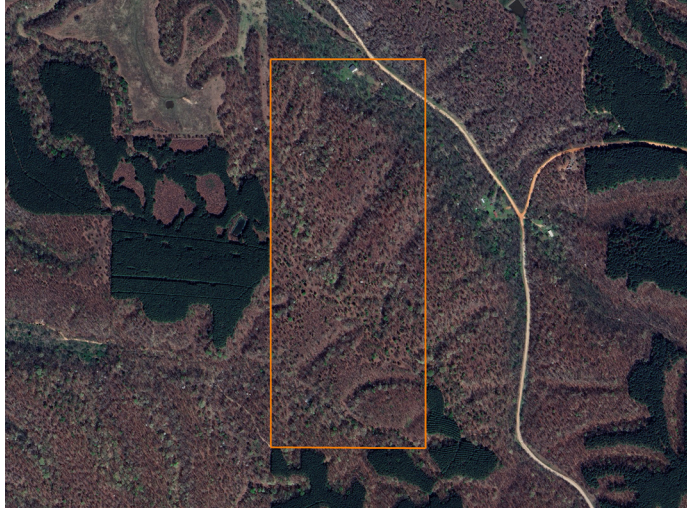


LAND FOR SALE

TIMBER TRACT IN EASTERN OKLAHOMA



PROPERTY FEATURES

- Wet-weather creek
- Mature timber
- Whitetail deer
- Gravel road frontage
- Oak trees
- Over 110 feet of elevation change
- Maintained gravel road
- 10 miles to Lake Eucha
- 60 miles to Tulsa, OK
- 22 miles from Silom Springs, AR



COUNTY: **DELAWARE**

STATE: **OKLAHOMA**

ACRES: **100**



For more information, contact:

VANCE MULLENDORE, Land Agent

918.505.4865 | VMullendore@MidwestLandGroup.com

MidwestLandGroup.com BUYERS, SELLERS, AND LAND – CONNECTED

This property is being offered by Midwest Land Group, LLC, 7111 W. 151st Street, Ste. 27, Overland Park, KS 66223, 913.674.8010.
Licensed in AL, AR, IA, IL, IN, KS, KY, LA, MN, MO, MS, MT, NE, OH, OK, SD, TN, TX, WI, and WY.