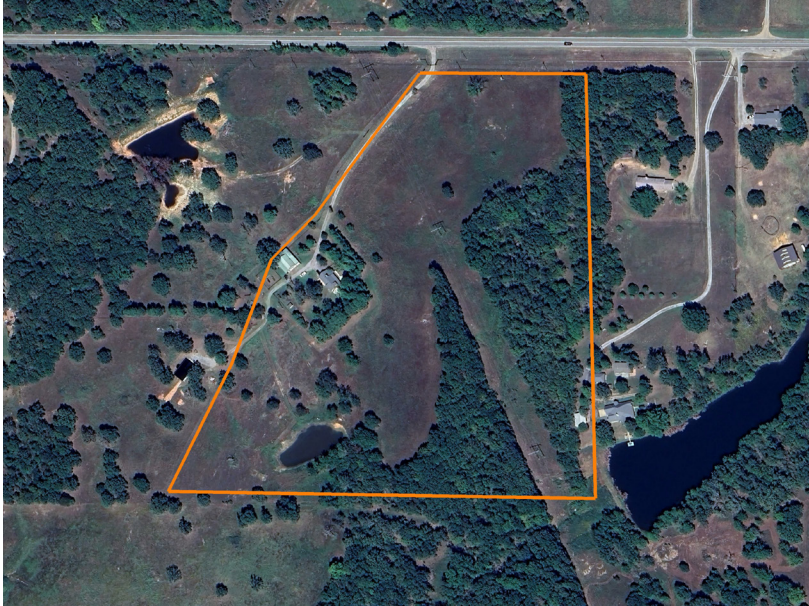


LAND FOR SALE

LOG HOME ON 24.6 ACRES WITH POND, SHOP & WALK-OUT BASEMENT

COUNTY: **CREEK**
STATE: **OKLAHOMA**
ACRES: **24.6**



PROPERTY FEATURES

- Beautiful log home with wood walls & exposed beams throughout
- Pond, pasture & fully fenced property
- Electric gated entrance
- Separate fenced area for dogs
- 2 living areas & wood-burning fireplace
- Main level bedrooms combined into oversized room - easily converted back to 3 bedrooms
- Full walk-out basement with separate entrance, bath, laundry & mini kitchen
- Approx. 36'x40' fully insulated shop with lean-to
- Shop includes A/C & wood stove for heat
- 2 concrete firepit pads
- Fiber optic internet available

For more information, contact:

SUMMER WITTY, Land Broker

918.798.1561 | SWitty@MidwestLandGroup.com

MidwestLandGroup.com

