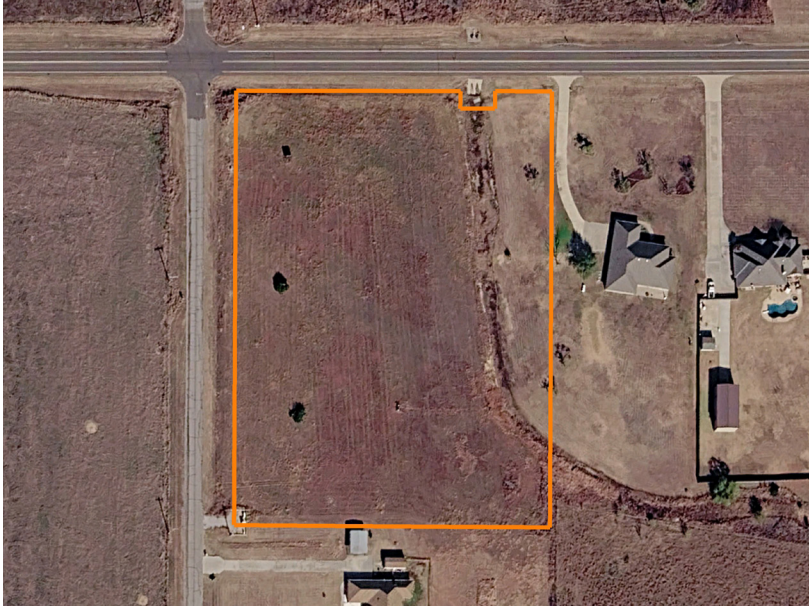


LAND FOR SALE

# 4.15 ACRE BUILDING SITE JUST WEST OF LAWTON IN THE CACHE SCHOOL DISTRICT

COUNTY: **COMANCHE**  
STATE: **OKLAHOMA**  
ACRES: **4.15**



## PROPERTY FEATURES

- 4.15 acres located at Lee Boulevard & Paint Road
- Between Cache and Lawton
- Beautiful views of the Wichita Mountains to the north
- Scenic, open setting with great potential homesite options
- Just minutes from both Cache and the west side of Lawton
- Includes a water district membership
- Nearby electricity available
- Convenient access to nearby shopping, dining, and commuting routes
- Great opportunity to own acreage in southwest Oklahoma
- Ideal location to build and enjoy the country feel

For more information, contact:

**MICHAEL AYERS**, Land Agent

**580.682.0026** | [MAyers@MidwestLandGroup.com](mailto:MAyers@MidwestLandGroup.com)

**MidwestLandGroup.com**

This property is being offered by Midwest Land Group, LLC, 7111 W. 151st Street, Ste. 27, Overland Park, KS 66223, 913.674.8010. Licensed in AL, AR, IA, IL, IN, KS, KY, LA, MN, MO, MS, MT, NE, OH, OK, SD, TN, TX, WI, and WY.

