

MIDWEST LAND GROUP PRESENTS

20 ACRES IN

CASS COUNTY MISSOURI



MidwestLandGroup.com

MIDWEST LAND GROUP IS HONORED TO PRESENT

TURN-KEY 20 +/- ACRE GEM IN CASS COUNTY

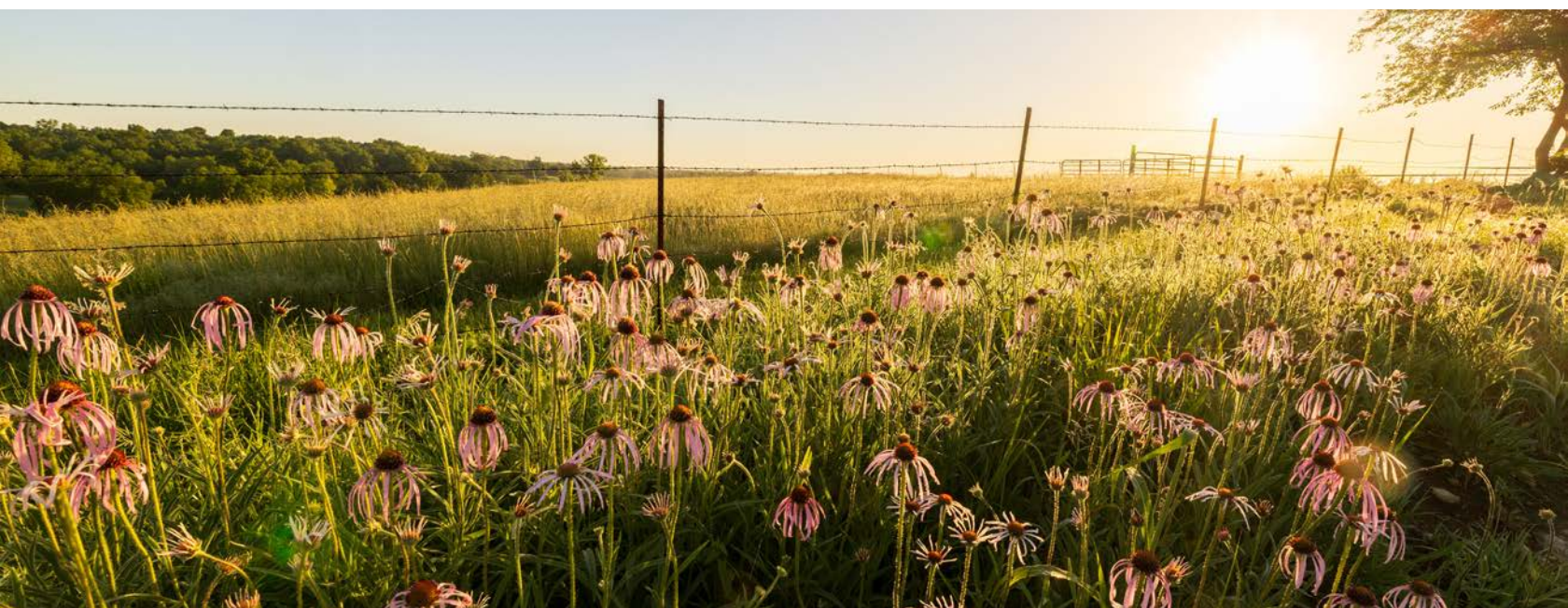
This could quite possibly be the best 20 +/- acre property to hit the market in Cass County. It's got it all! The property sits just 6 miles east of Archie, Missouri, with great blacktop road access. The location couldn't be any more convenient, as it is just 5 miles from I-49 and under 1 hour to the Kansas City area. Rural water is along the road, and electricity has been run underground 750+ feet to a picturesque home, cabin, or campsite.

Currently, there is a gravel camper site overlooking the pond complete with electric hookups. This makes for the perfect weekend getaway or permanent home or cabin build site location. The rolling topography of the land is awesome and has incredible views! It features a great mix of open ground, huge mature trees, a fishing pond, and a creek. The pond was recently renovated and expanded in size. It even features a new windmill

and aerator. Another amazing upgrade is the newer 14'x24' shed with electricity. It's super handy to store equipment and other gear.

Deer and turkey hunting opportunities are great, and there are amazing locations to plant food plots. Talk about a recreational paradise that offers a little bit of everything! Hunt and explore right out the back door. Fish in the pond. Ride four wheelers. Enjoy amazing sunrises and sunsets. The list goes on and on with the fun to be had on this property!

You can see the pride of ownership of this property on full display. It has been incredibly manicured and maintained. Contact Skyler Wirsig at (816) 500-0168 for more information or to schedule a showing.



PROPERTY FEATURES

COUNTY: **CASS** | STATE: **MISSOURI** | ACRES: **20**

- 20 +/- surveyed acres
- Blacktop road access
- Water along the road
- Electricity run underground 750+ feet
- Gravel camper site with electricity
- 14'x24' shed with electricity
- Picturesque build site
- Rolling topography with amazing views
- Open pasture and mature trees
- Renovated pond and creek
- New windmill and pond aerator
- Deer and turkey hunting
- Great recreational opportunities
- Fencing on 3 sides
- Archie School District
- 6 miles to Archie
- 8 miles to Garden City
- 18 miles to Harrisonville
- Under 1 hour to Kansas City area



PICTURESQUE BUILD SITE



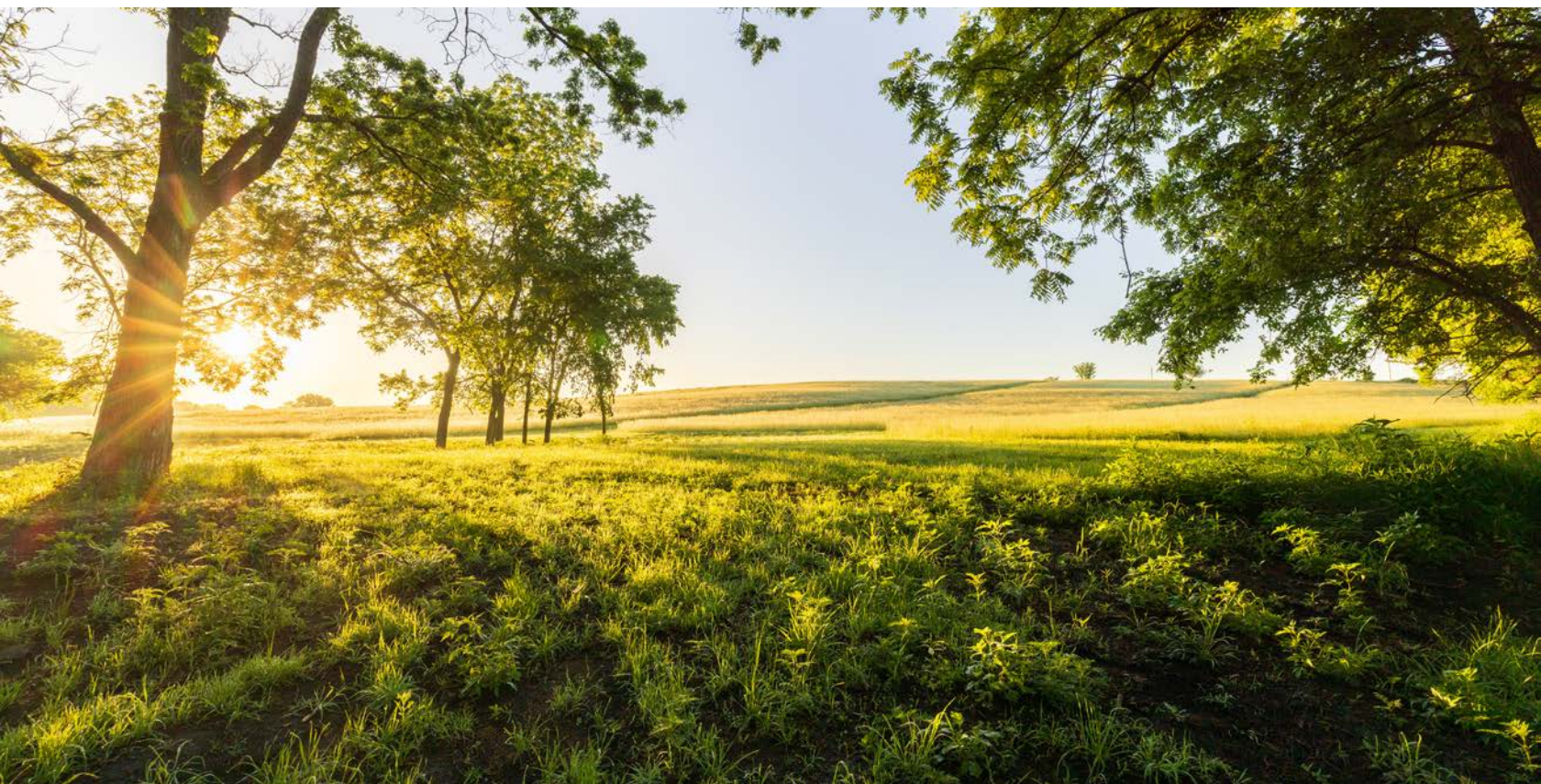
BLACKTOP ROAD ACCESS



14'X24' SHED WITH ELECTRICITY



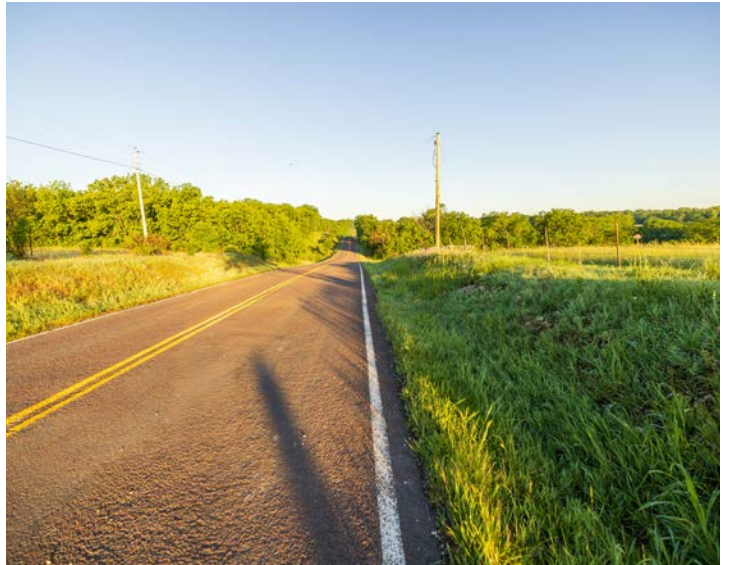
ROLLING TOPOGRAPHY & AMAZING VIEWS



RENOVATED POND AND CREEK



ADDITIONAL PHOTOS



AERIAL MAP



©2026 AgriData, Inc.

Boundary Center: 38° 29' 10.87, -94° 14' 29.47

0ft 363ft 726ft

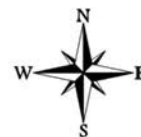


Maps Provided By:



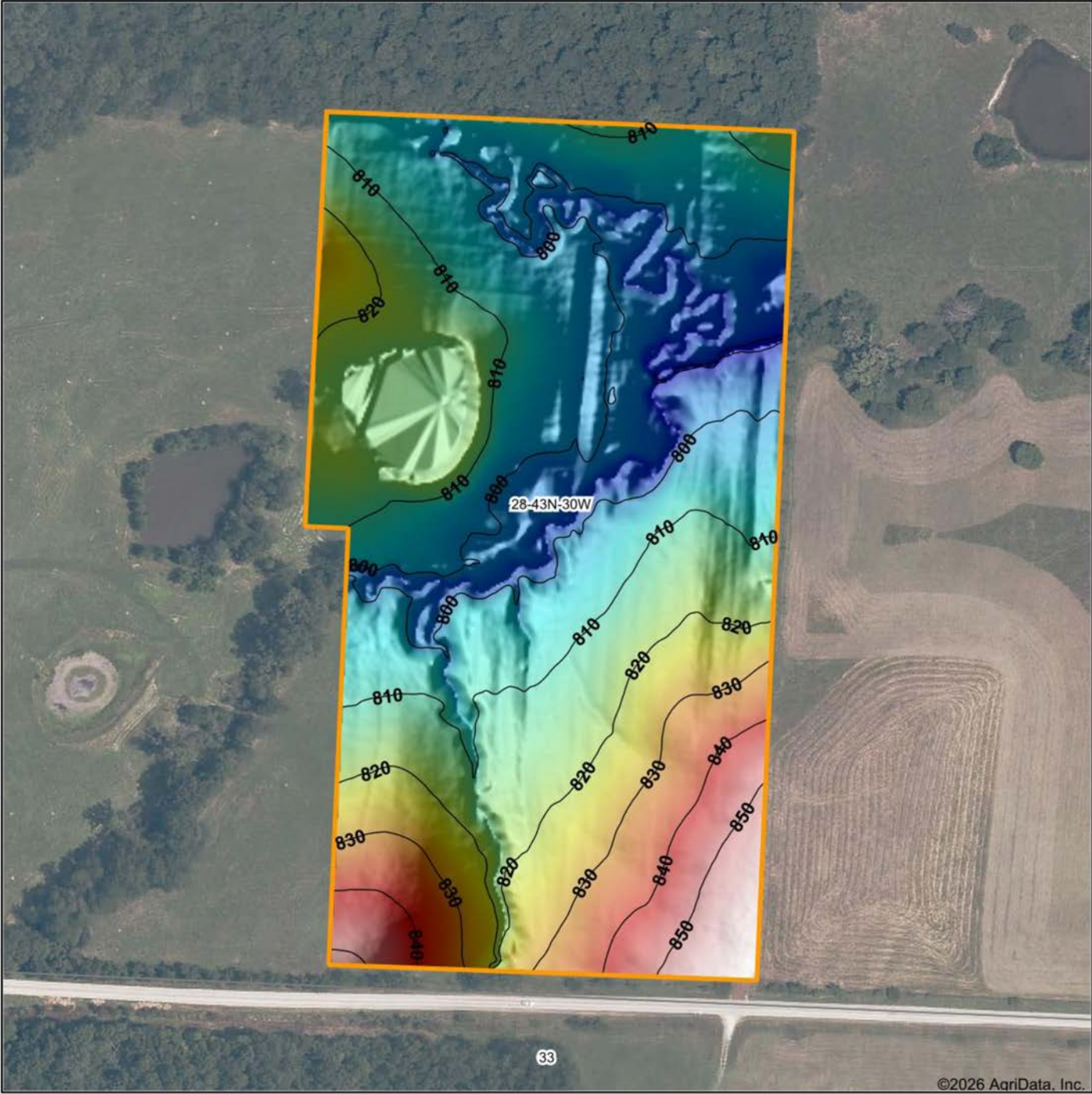
© AgriData, Inc. 2025 www.AgriDataInc.com

28-43N-30W
Cass County
Missouri



5/12/2026

HILLSHADE MAP



©2026 AgriData, Inc.

Low Elevation High

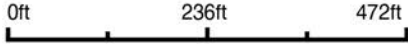


Maps Provided By:



© AgriData, Inc. 2025 www.AgriDataInc.com

Source: USGS 1 meter dem
 Interval(ft): 10
 Min: 788.9
 Max: 858.0
 Range: 69.1
 Average: 813.8
 Standard Deviation: 14.76 ft

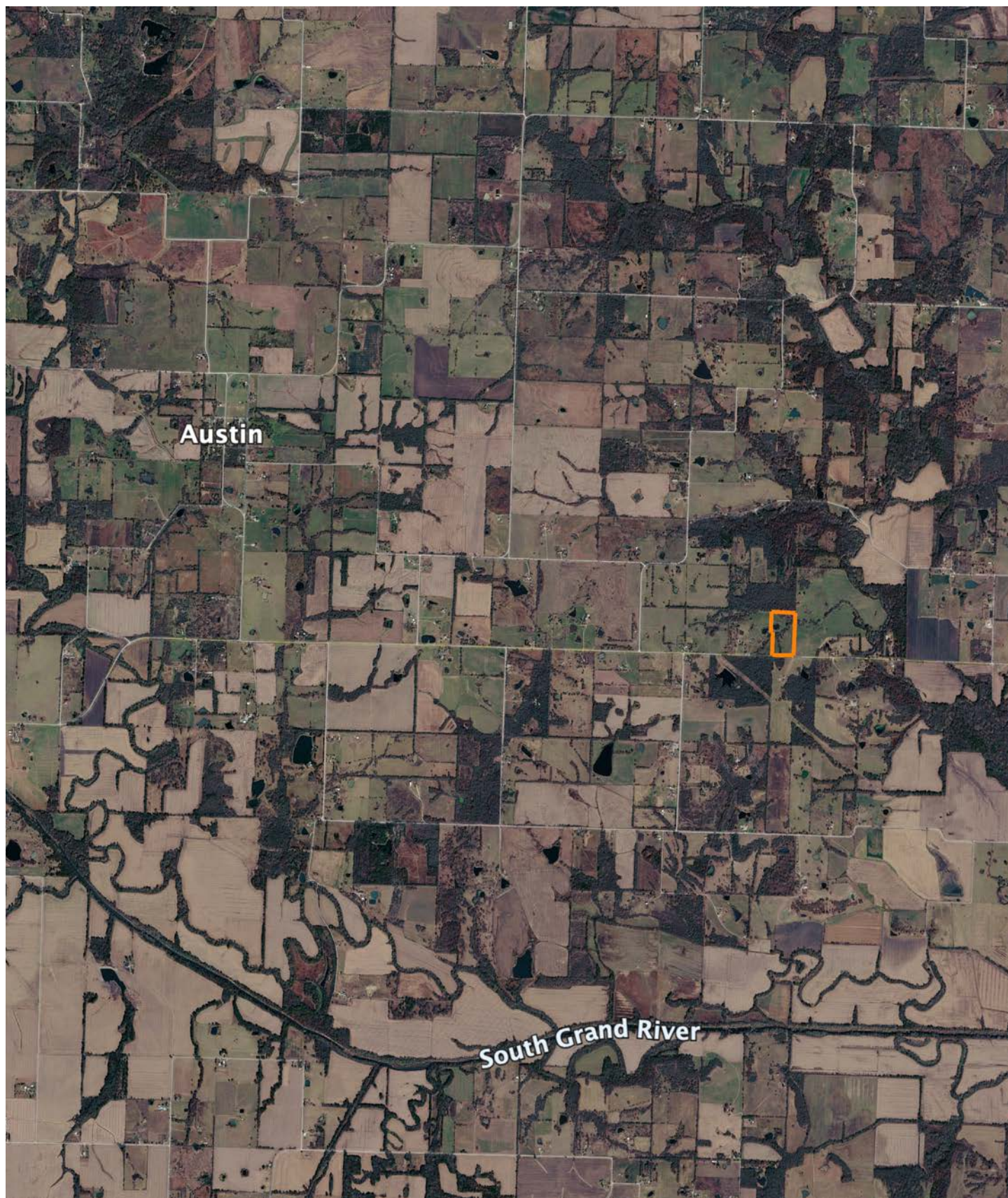


5/12/2026

28-43N-30W
Cass County
Missouri

Boundary Center: 38° 29' 10.87, -94° 14' 29.47

OVERVIEW MAP



AGENT CONTACT

Skyler Wirsig is a seasoned steward of the land with a firm focus on developing and managing agricultural properties. Over 15 years, he has gained invaluable experience filming and hunting for the Outdoor Channel's Heartland Bowhunter, which has earned several accolades under his watch.

Hailing from Kansas City, Missouri, Skyler graduated from William Jewell College with degrees in Business Administration and Critical Thought & Inquiry. His previous role as an operations manager, handling sales and customer relationships across 20 countries, enhances his effectiveness as a real estate agent.

A dedicated sportsman, Skyler proudly holds the Archery Missouri State Record for an 8-point whitetail. Despite his professional accomplishments, he remains approachable, enjoying fishing, sports, and travel with his family. Skyler also volunteers for the Wounded Warriors in Action Foundation. Residing on his farm in Grain Valley, Missouri, with his wife and sons, Skyler brings a wealth of expertise and a down-to-earth attitude to land sales in the Midwest.



SKYLER WIRSIG

LAND AGENT

816.500.0168

SWirsig@MidwestLandGroup.com



MidwestLandGroup.com

This property is being offered by Midwest Land Group, LLC. 913.674.8010. All information provided by Midwest Land Group, LLC or their agents was acquired from sources deemed accurate and reliable, however we do not warrant its accuracy or completeness. Midwest Land Group, LLC assumes no liability for error, omission or investment results. Midwest Land Group, LLC. Licensed in Alabama, Arkansas, Illinois, Indiana, Iowa, Kansas, Kentucky, Louisiana, Minnesota, Mississippi, Missouri, Montana, Nebraska, Ohio, Oklahoma, South Dakota, Tennessee, Texas, Wisconsin, and Wyoming.