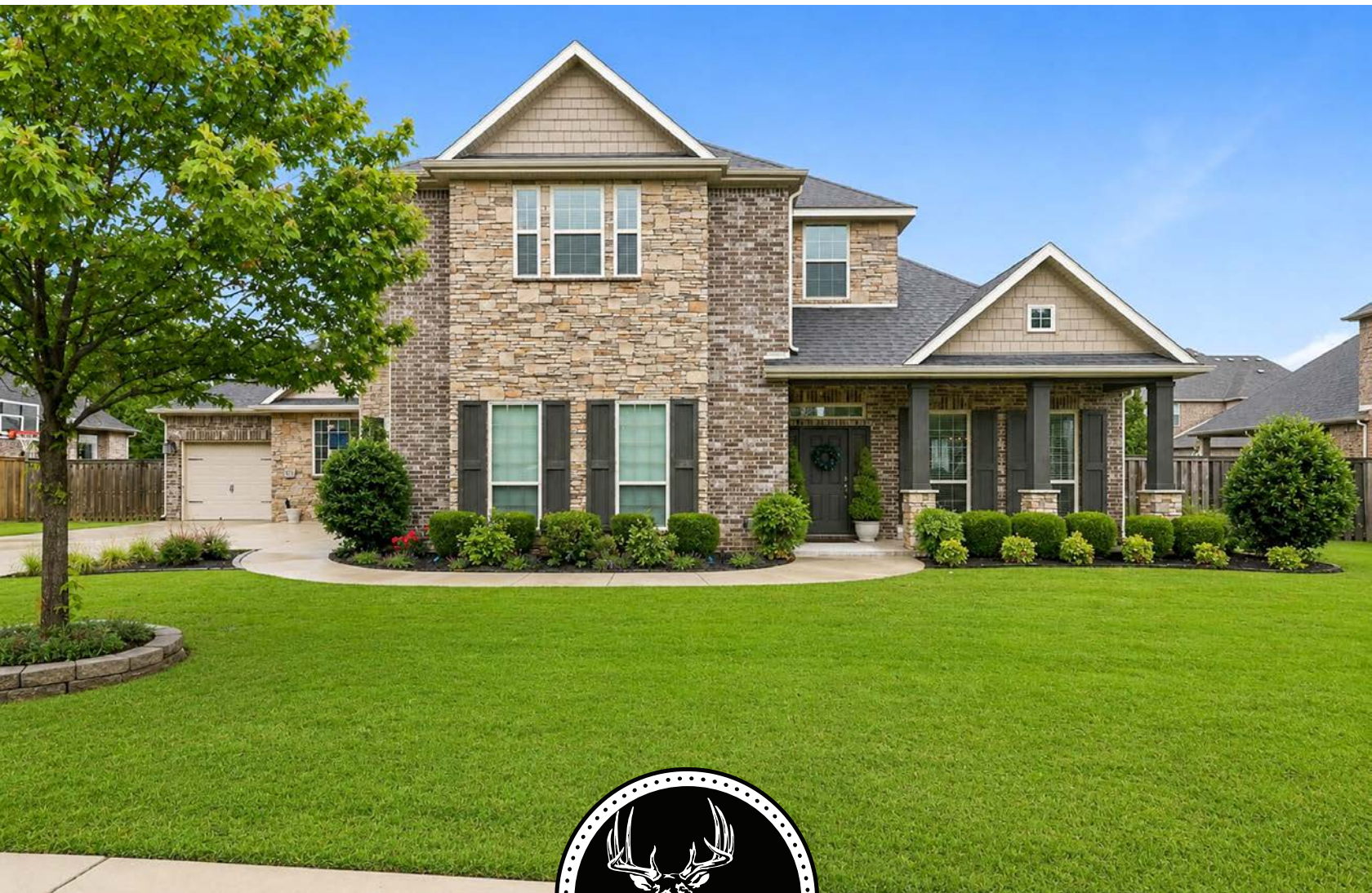


MIDWEST LAND GROUP PRESENTS

.2 ACRES IN

BENTON COUNTY ARKANSAS

6107 SOUTH 28TH STREET, ROGERS, AR 72758



MidwestLandGroup.com

MIDWEST LAND GROUP IS HONORED TO PRESENT

BEAUTIFUL ROGERS, ARKANSAS HOME IN SOUGHT-AFTER NEIGHBORHOOD

Step into comfort, space, and convenience in this beautifully designed 4 bedroom, 3.5 bath home in the sought-after Silo Falls neighborhood. Built in 2016 and offering 3,091 square feet, this home features an open layout with a spacious kitchen and living area filled with abundant natural light, perfect for everyday living and entertaining. The main-level primary suite offers a private retreat with a cozy sitting area and built-in office space, creating the perfect blend of relaxation and functionality. Upstairs, you'll find 3 additional bedrooms and a flexible living space to fit a variety of needs. Enjoy

outdoor living with a large, flat backyard featuring a screened-in porch and a beautiful flagstone fire pit area ideal for gathering with friends and family. Take in stunning sunsets from the front porch while appreciating the evening shade in the backyard. Additional features include a 3-car garage and exceptional neighborhood amenities, including a community pool, clubhouse, playground, stocked fishing pond, and direct access to the Greenway bike trail. This home offers the space you need and the lifestyle you've been looking for in one exceptional location.



PROPERTY FEATURES

COUNTY: **BENTON** | STATE: **ARKANSAS** | ACRES: **.2**

- 3,091 square feet
- 4 bed, 3.5 bath
- Large kitchen
- Main level master suite
- Custom built-ins
- 3-car garage
- Large flat yard
- Screened back porch
- Neighborhood amenities
- Under 10 minutes to Pinnacle Hills Promenade
- Walking distance to the local school

3,091 SQUARE FOOT HOME

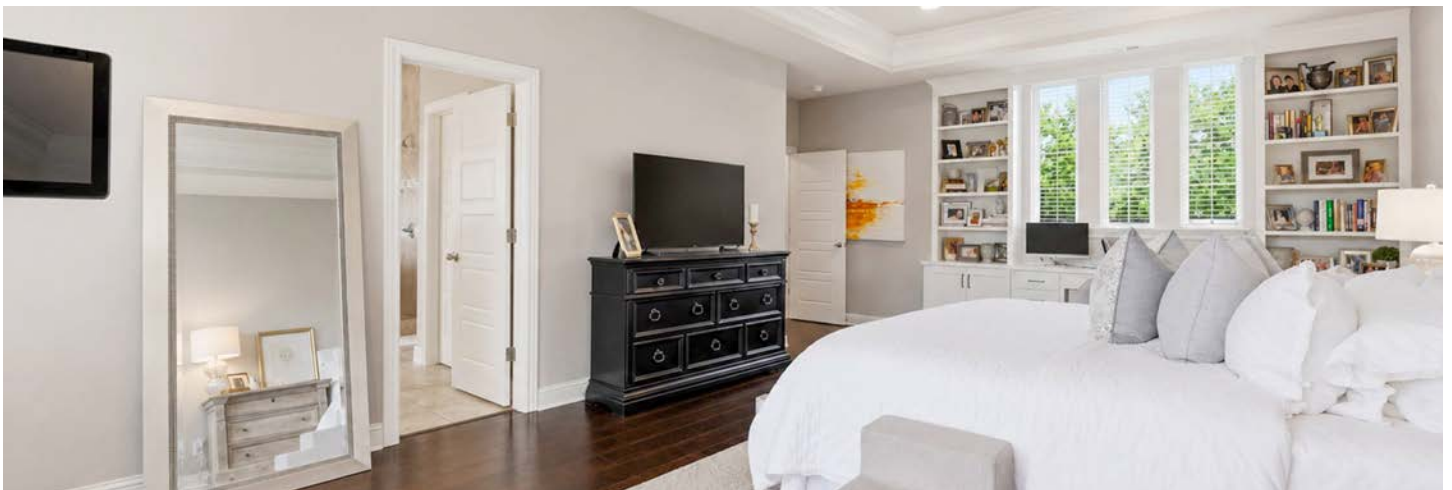
Built in 2016 and offering 3,091 square feet, this home features an open layout with a spacious kitchen and living area filled with abundant natural light, perfect for everyday living and entertaining.



CUSTOM BUILT-INS



MAIN LEVEL MASTER SUITE



SCREENED BACK PORCH



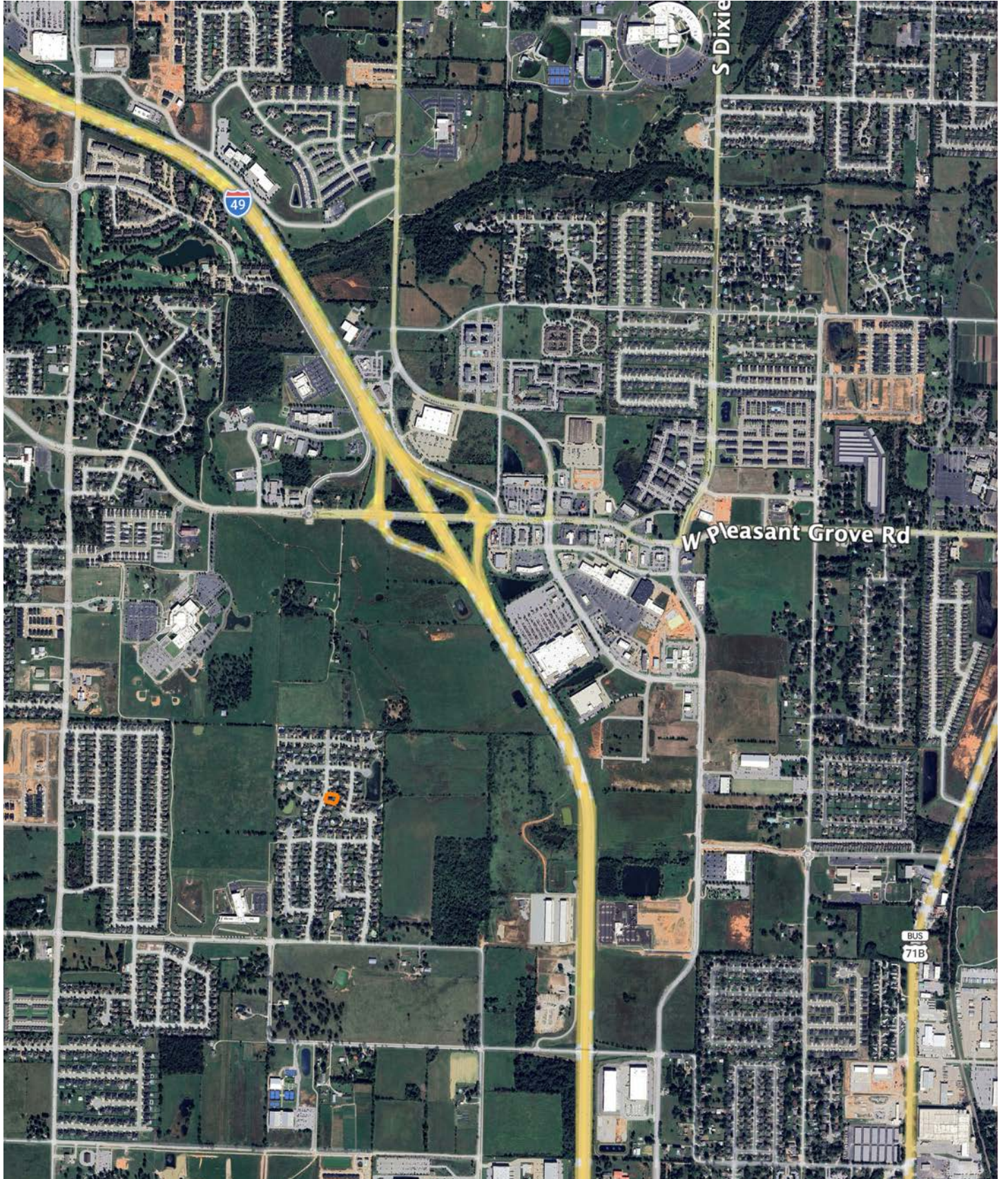
3-CAR GARAGE



AERIAL MAP



OVERVIEW MAP



AGENT CONTACT

A passion for the outdoors, respect for the value of land, and expertise in land utilization and preservation give Max Farrell a solid foundation for helping you with Northwest Arkansas real estate. Max holds a Graduate Certificate in Geographic Information Systems (GIS), and has a four-year background in ensuring environmental compliance at the state level. He spent 11 years administering a GIS database and coordinating third-party land survey crews and environmental assessment teams for the oil and gas pipeline industry. Proficient in aerial photography and topographic interpretation, Max was also heavily involved in wetland determination and spent a lot of time obtaining utility easements without the use of condemnation. This required a great deal of listening and understanding with individual landowners across a wide variety of large-scale projects.

Max is an avid whitetail bowhunter and turkey hunter, enjoys bass fishing and has experience in wildlife habitat improvement. He also has knowledge of government-subsidized conservation programs available to landowners. Max lives in Rogers with his wife, Rachel, and their two daughters, Weezie and Daisy. His experience gives him the ability to help buyers and sellers quickly recognize valuable features of rural property including drainage, location concerns, access, development potential, benefits to wildlife, historical relics, plant species, livestock considerations, and more. He also has deep community connections — and looks forward to helping his clients utilize them to achieve their goals.



MAX FARRELL,
ASSOCIATE LAND BROKER
479.426.8303
MFarrell@MidwestLandGroup.com



MidwestLandGroup.com

This property is being offered by Midwest Land Group, LLC. 913.674.8010. All information provided by Midwest Land Group, LLC or their agents was acquired from sources deemed accurate and reliable, however we do not warrant its accuracy or completeness. Midwest Land Group, LLC assumes no liability for error, omission or investment results. Midwest Land Group, LLC. Licensed in Alabama, Arkansas, Illinois, Indiana, Iowa, Kansas, Kentucky, Louisiana, Minnesota, Mississippi, Missouri, Montana, Nebraska, Ohio, Oklahoma, South Dakota, Tennessee, Texas, Wisconsin, and Wyoming.