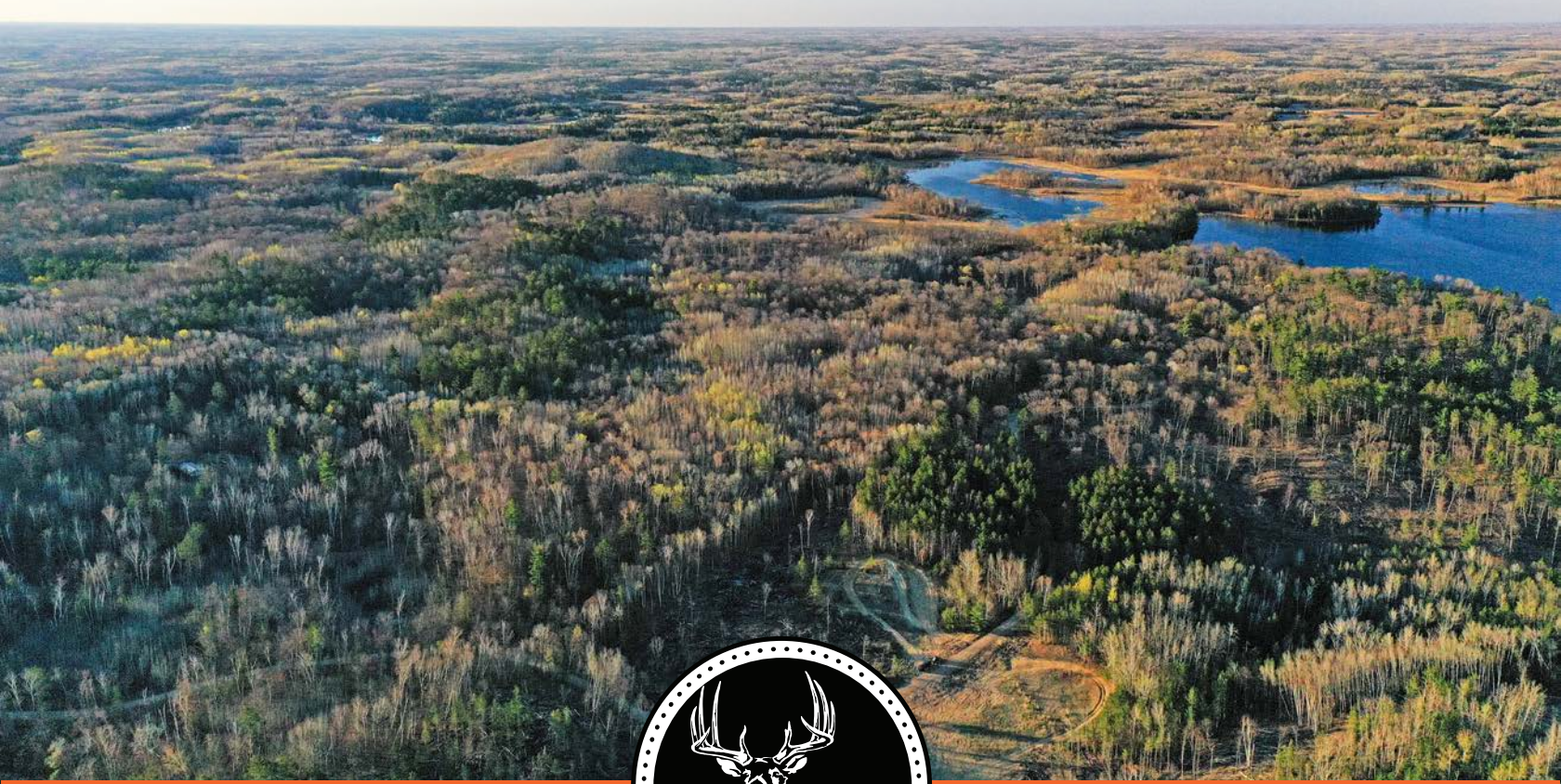


MIDWEST LAND GROUP PRESENTS

120 ACRES IN

---

# BECKER COUNTY MINNESOTA



[MidwestLandGroup.com](http://MidwestLandGroup.com)

MIDWEST LAND GROUP IS HONORED TO PRESENT

# DREAM OFF-GRID HUNTING CAMP 120 +/- ACRES WITH PROVEN TROPHY BUCK OUTPUT

Shaded by spectacular hardwoods, a recently built 60'x40' pole barn featuring a two-stall garage and sizable living quarters is surrounded by breathtaking rolling hills loaded with impressive security cover. This dream Northern Minnesota hunting camp also offers another one-room cabin, a semi-trailer for storage, plus a wood shed, now available to change hands, a rare opportunity indeed. These 120 +/- acres share three borders with the Smoky Hills State Forest, adding over 14,000 additional acres to hunt and explore.

The front gate is nearly half a mile off of Smoky Hills Forest Road on a legally established easement providing serenity and privacy. Not only is there a history of big deer, wild turkeys, black bears, but also grouse are abundant. Existing and manicured trails are just right

for side-by-side access, and lead to a number of proven shooting houses and stands.

The property is located 20 miles west of Park Rapids, 26 miles east of Detroit Lakes, offering access to countless amenities, including hardware stores, gas stations, and awesome eateries featuring renowned meat raffles. On top of that, this property is just down the road from tons of amazing Northern Minnesota lakes full of eager large- and smallmouth bass, crappies, bluegills, walleyes, pike, and muskies. Becker County whitetail hunting is known to be exceptional, but when combined with the built-in amenities that complement the property and accessibility to local lakes and communities, this place is a grand slam.



# PROPERTY FEATURES

COUNTY: **BECKER** | STATE: **MINNESOTA** | ACRES: **120**

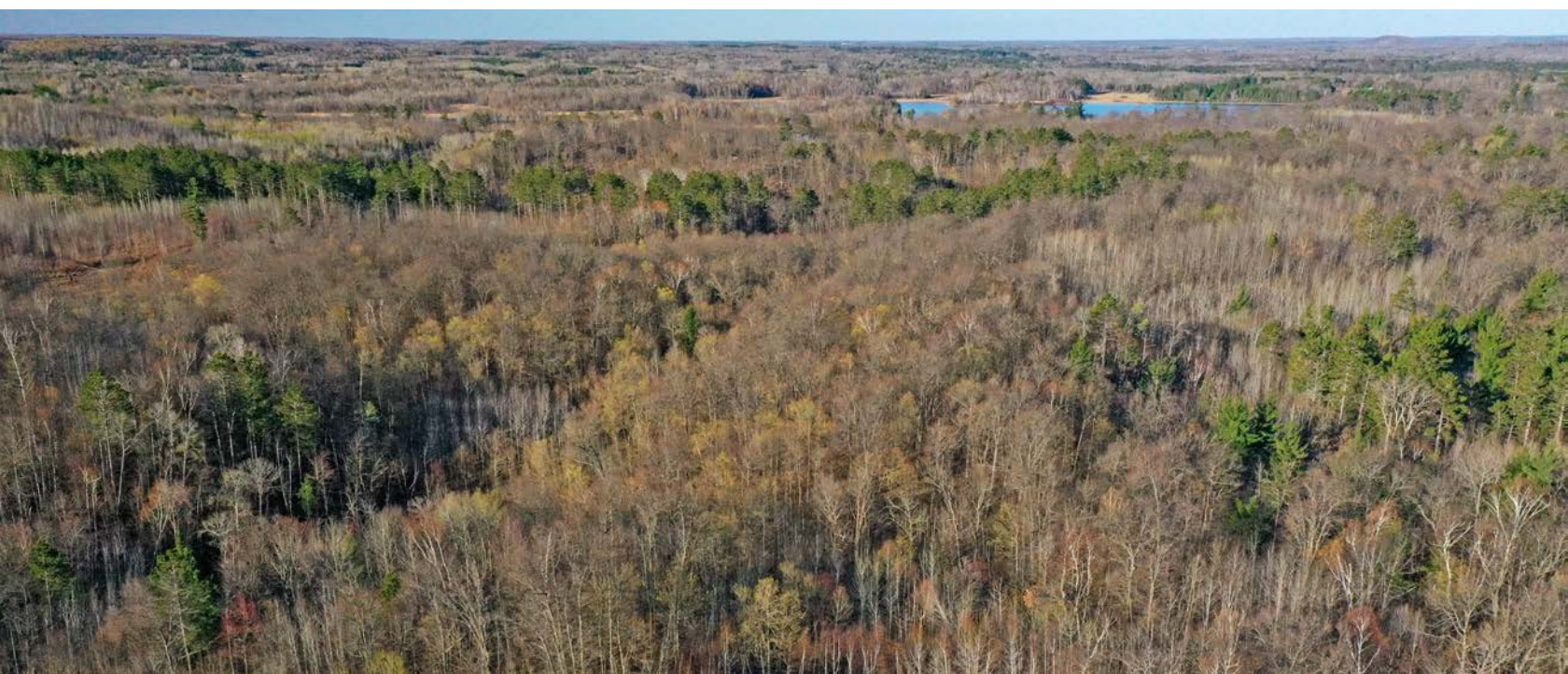
---

- Hardwoods and rolling hills
- Adjacent to 14,000 acres of state forest land
- Proven big-buck history
- Hunting opportunities for whitetails, turkeys, black bears, and grouse
- 60'x40' pole barn with 2-stall garage and living quarters
- Living quarters are plumbed for a well and septic installation
- Additional hunting cabin and storage
- Manicured trails
- Existing stand and shooting house locations
- Access to countless world-class lakes
- 20 miles from Park Rapids
- 26 miles from Detroit Lakes



# HARDWOODS AND ROLLING HILLS

---



# ACCESS TO COUNTLESS WORLD-CLASS LAKES

---



## 60'X40' POLE BARN

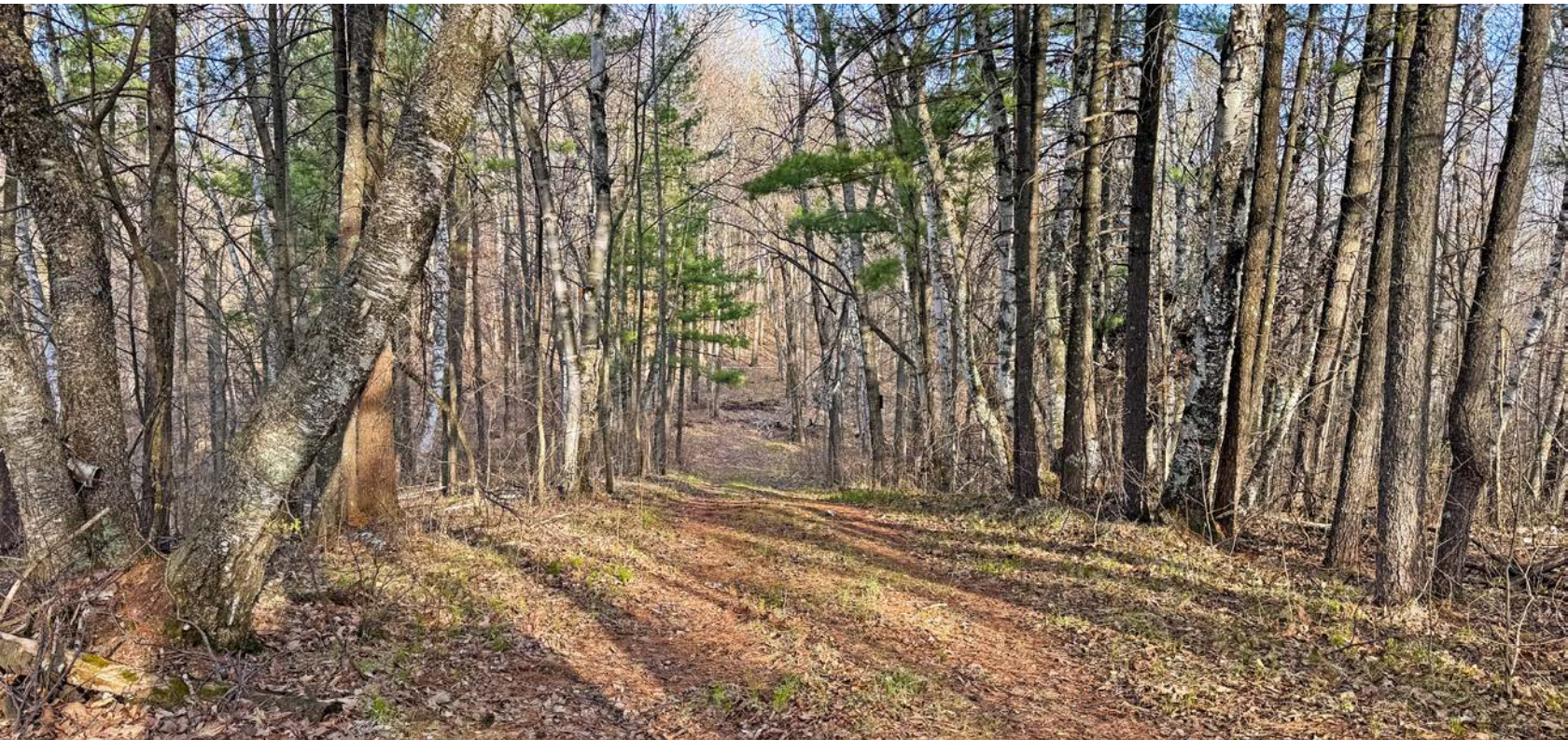
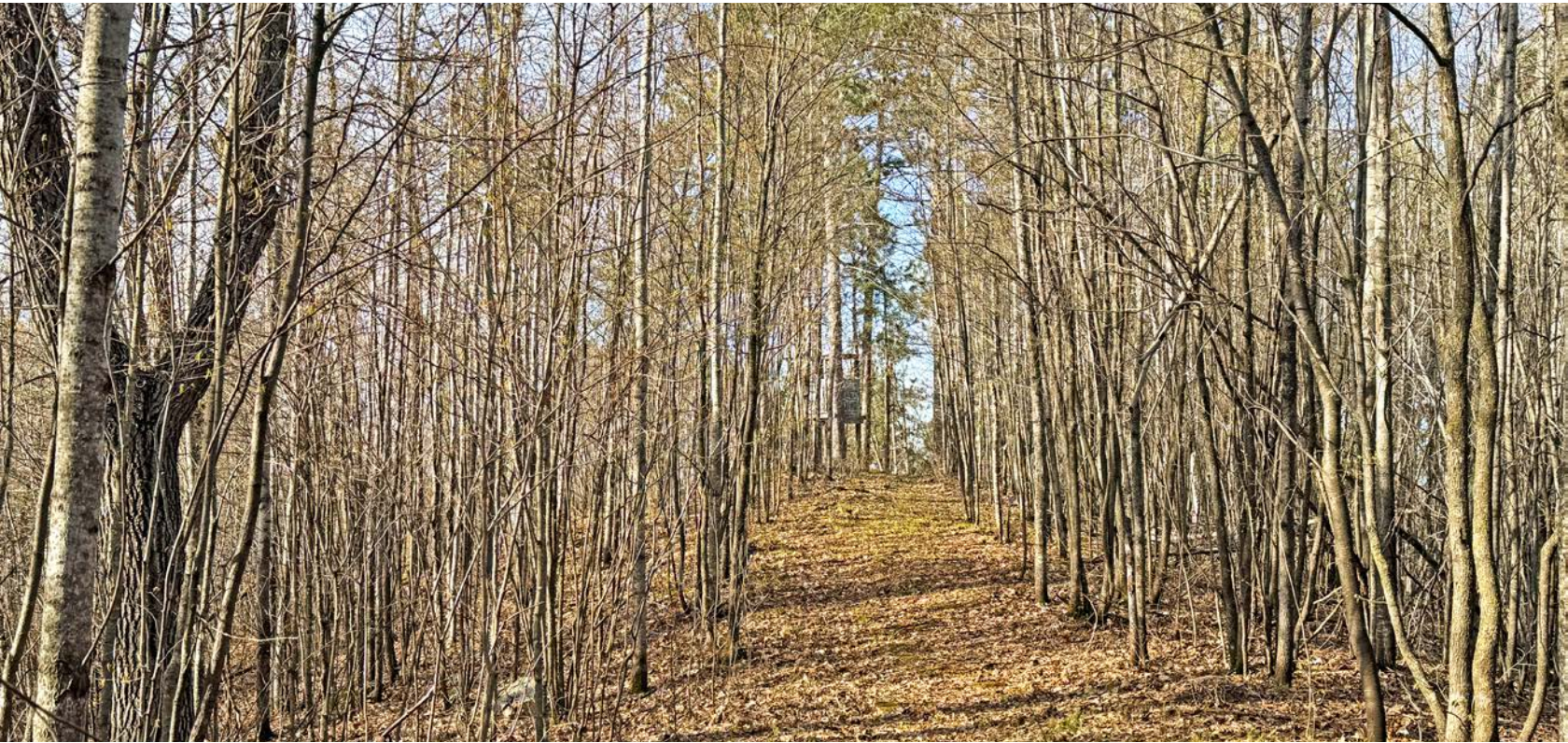
---



# MANICURED TRAILS

---

Existing and manicured trails are just right for side-by-side access, and lead to a number of proven shooting houses and stands.



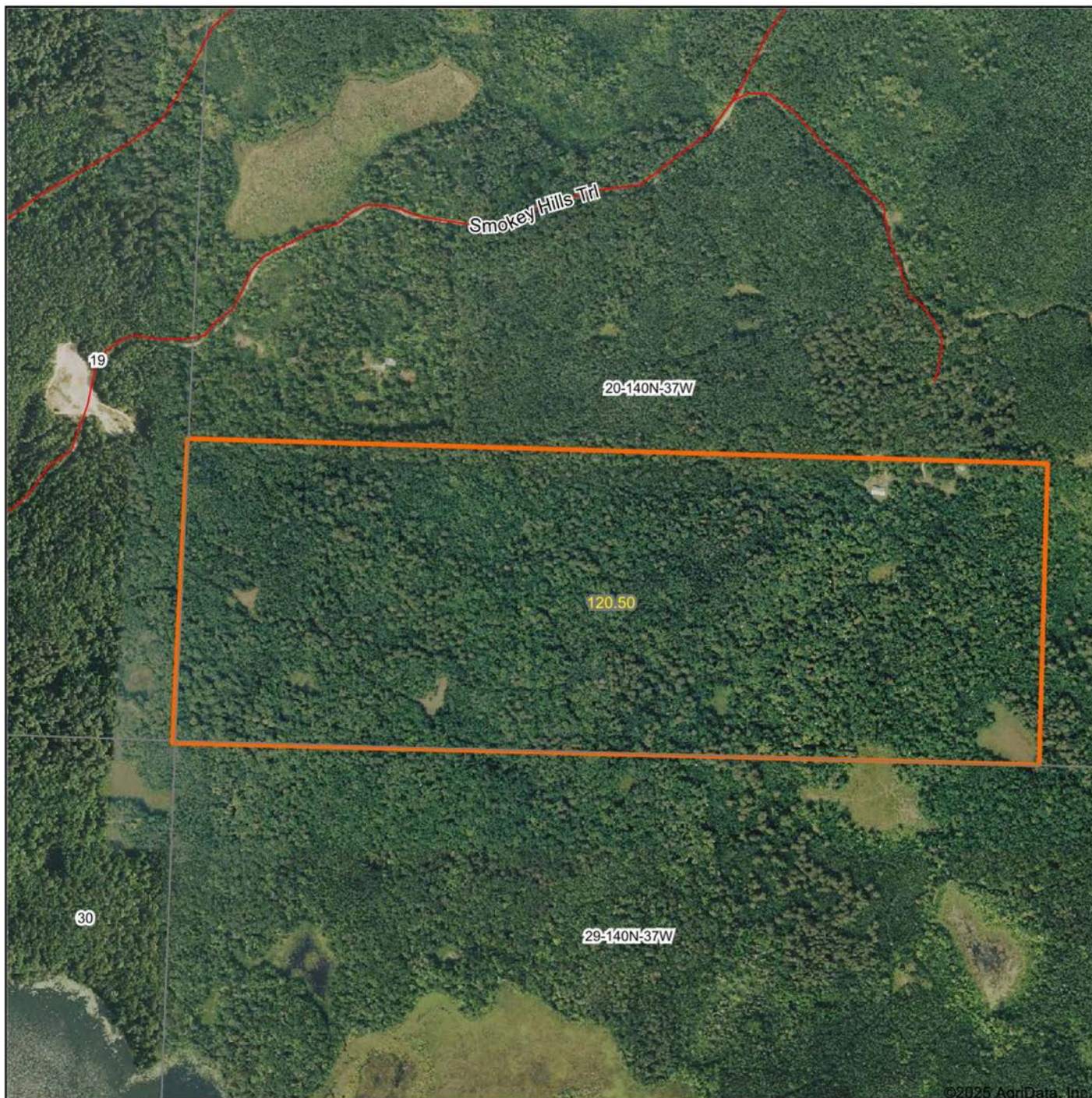
# HUNTING OPPORTUNITIES

---

Not only is there a history of big deer, wild turkeys, black bears, but also grouse are abundant. Becker County whitetail hunting is known to be exceptional, but when combined with the built-in amenities that complement the property and accessibility to local lakes and communities, this place is a grand slam.



# AERIAL MAP



Boundary Center: 46° 55' 14.71, -95° 23' 10.67

0ft 700ft 1399ft



Maps Provided By:



© AgriData, Inc. 2023 www.AgriDataInc.com

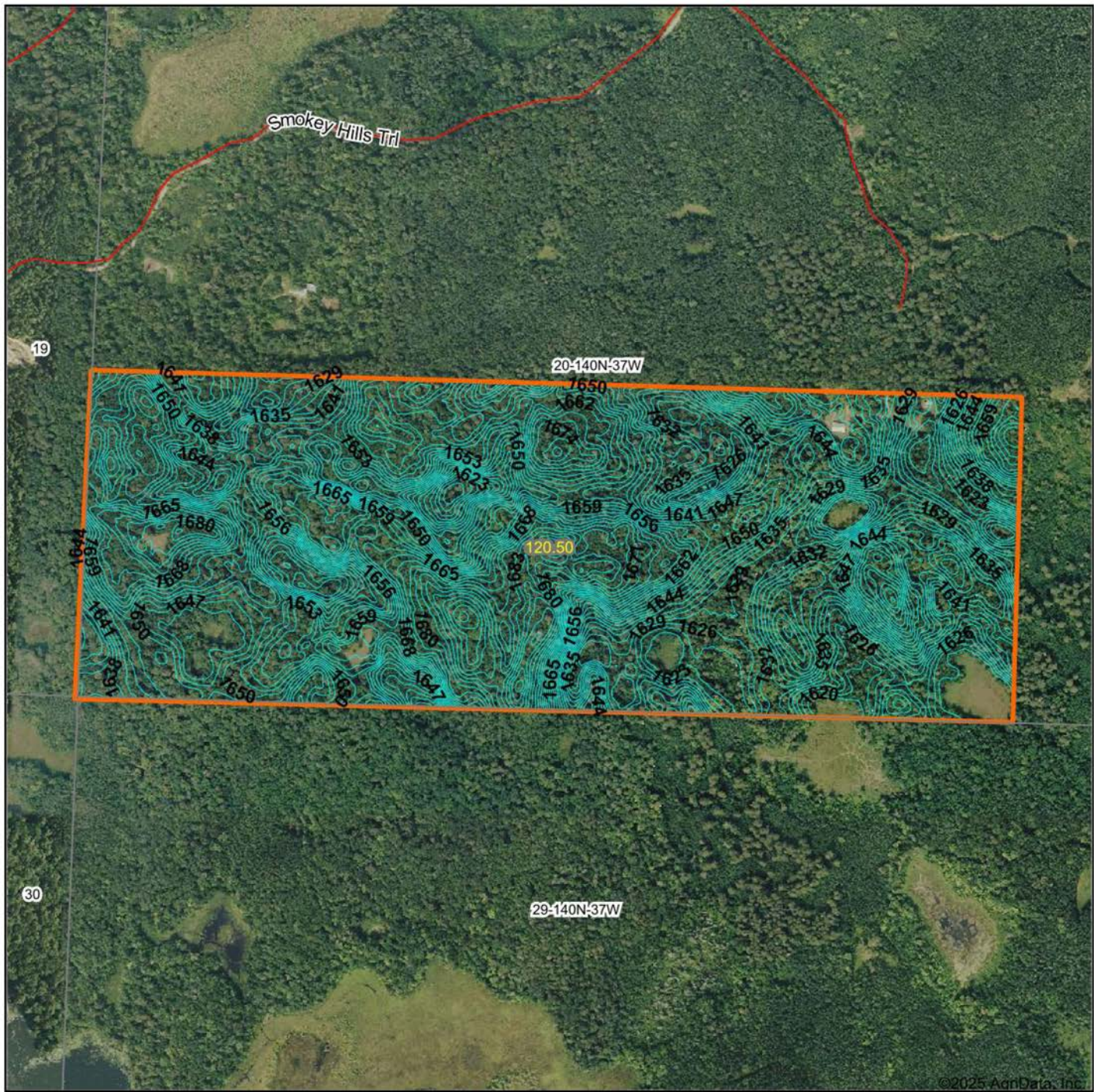
**20-140N-37W**  
**Becker County**  
**Minnesota**



11/9/2025

Field borders provided by Farm Service Agency as of 5/21/2008.

# TOPOGRAPHY MAP



Maps Provided By:



© AgriData, Inc. 2023 www.AgriDataInc.com

Field borders provided by Farm Service Agency as of 5/21/2008.

Source: USGS 3 meter dem

Interval(ft): 3.0

Min: 1,601.5

Max: 1,702.6

Range: 101.1

Average: 1,648.8

Standard Deviation: 19.03 ft

0ft 643ft 1286ft

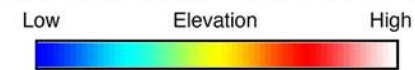
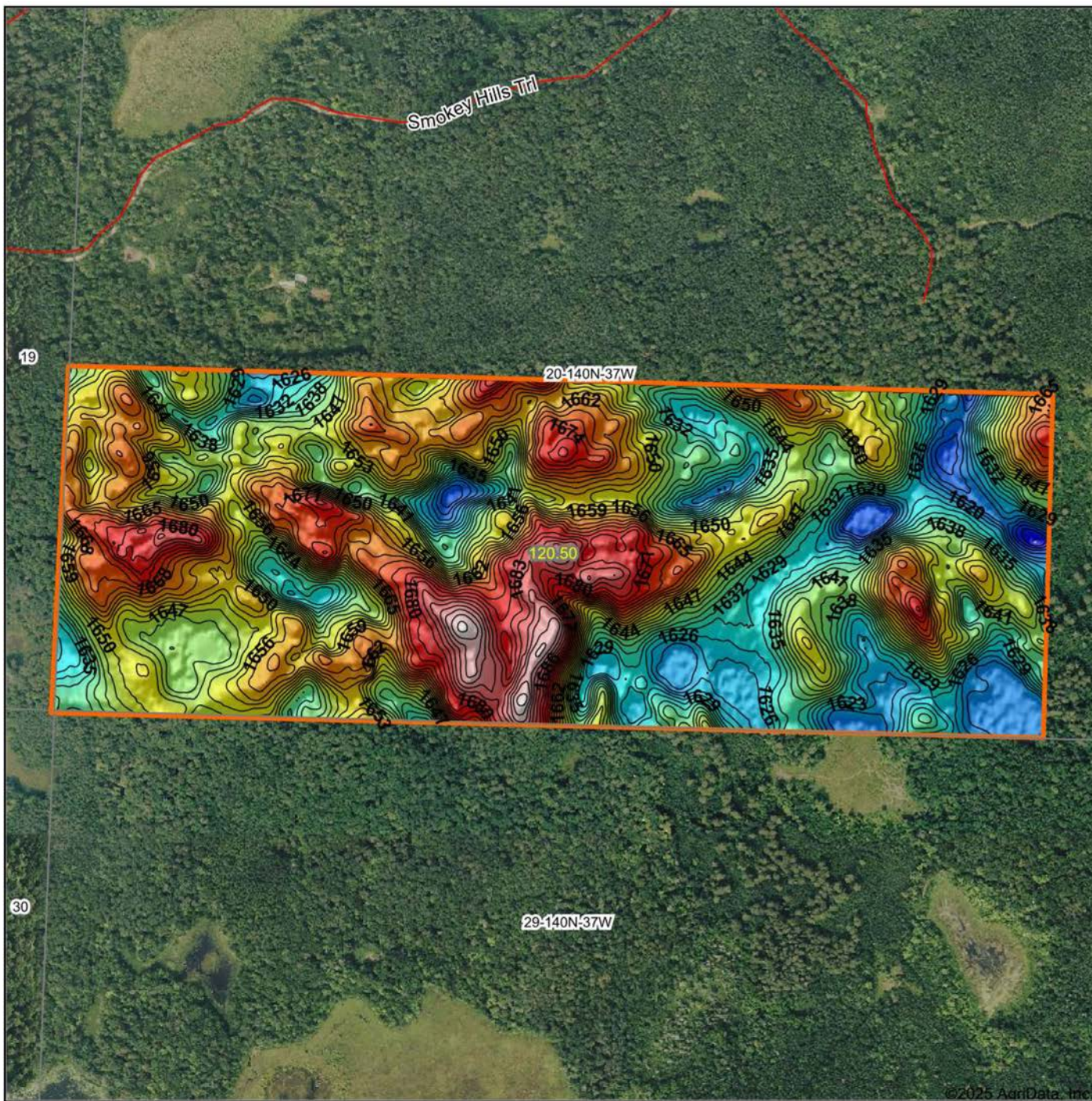


11/9/2025

**20-140N-37W**  
**Becker County**  
**Minnesota**

Boundary Center: 46° 55' 14.71, -95° 23' 10.67

# HILLSHADE MAP



Source: USGS 3 meter dem  
 Interval(ft): 3  
 Min: 1,601.5  
 Max: 1,702.6  
 Range: 101.1  
 Average: 1,648.8  
 Standard Deviation: 19.03 ft



**20-140N-37W**  
**Becker County**  
**Minnesota**

Boundary Center: 46° 55' 14.71, -95° 23' 10.67



Maps Provided By:

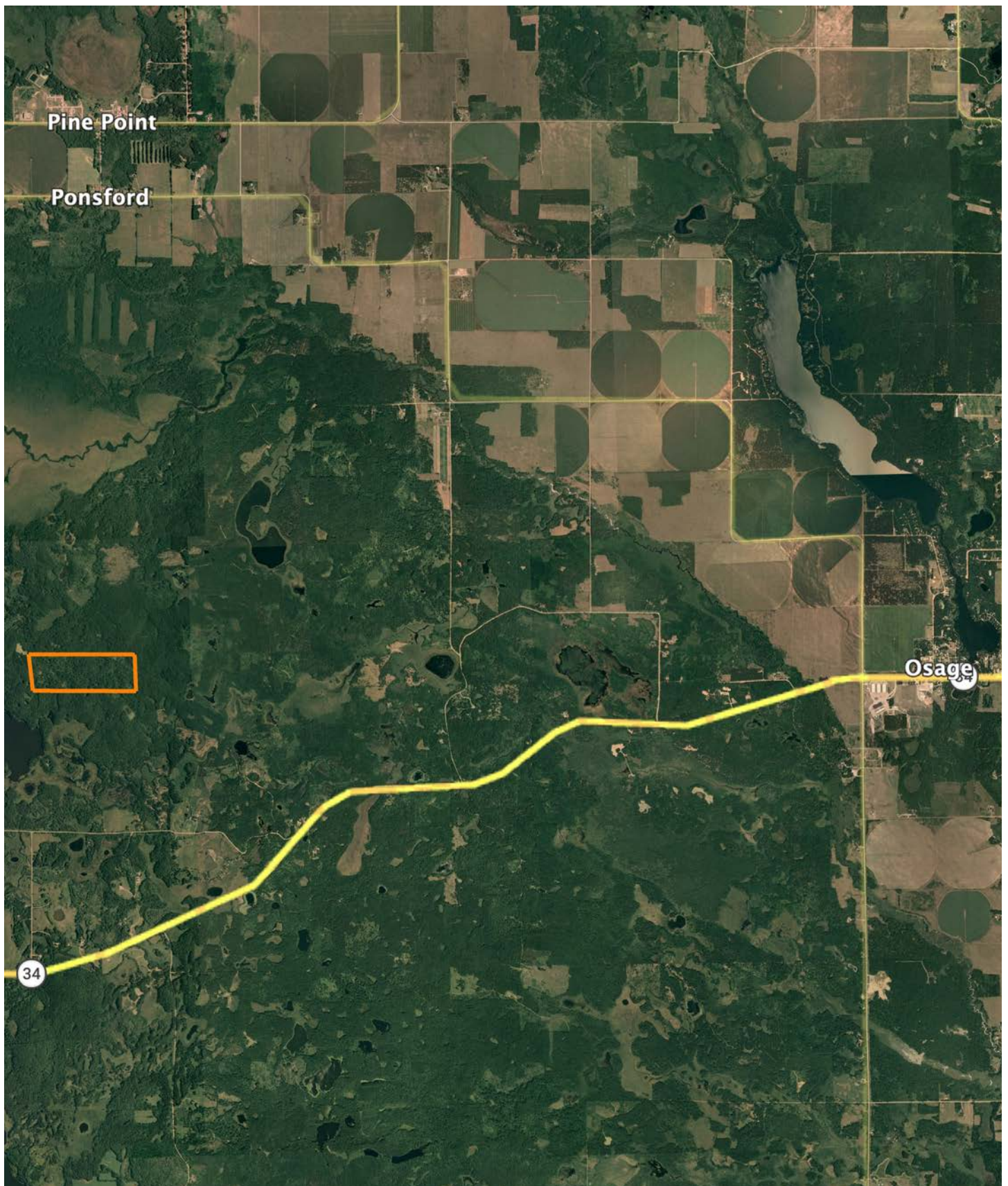


© AgriData, Inc. 2023 www.AgriDataInc.com

Field borders provided by Farm Service Agency as of 5/21/2008.

©2025 AgriData, Inc.

# OVERVIEW MAP



# AGENT CONTACT

Thomas Allen has spent over four decades pursuing life in the great outdoors, which created a deep appreciation for the land and the opportunities it provides. Born in Wisconsin and raised in Eastern Iowa, he grew up exploring creeks, catching catfish, and learning every detail of the timber that surrounded him. Those early adventures led to a lifelong passion for bass and muskie fishing, and especially hunting spring turkeys and Midwestern whitetails. He has since chased gobblers across 15 states, but what he values most are the memories made in the field with his family.

Now living in Brainerd, Minnesota, Thomas and his wife, Kathryn, have been married since 2003 and share two children, Tommy and Taylor, who are both lethal spring turkey hunters. God, family and the Midwestern outdoors are top priorities for the Allens.

Before joining Midwest Land Group, Thomas built a 20-year career as an outdoor media and communications specialist, having held editor chairs at *The Iowa Sportsman*, *North American Fisherman*, *Bassmaster/B.A.S.S. Times* magazines—and most recently at *In-Fisherman* based out of Brainerd. His work has also appeared in respected publications including *North American Whitetail*, *Game & Fish*, *North American Hunter*, and many more. That experience has provided a unique ability to connect with fellow landowners, hunters, and outdoor enthusiasts who share the same love for the outdoor lifestyle.

Thomas' passion for the Midwestern hardwoods was naturally coupled with a love for land management, strategic food-plot establishment, treestand wizardry, and sharing the boat or shooting house with family and friends, whether behind the gun, bow or lens. It is this passionate expertise that will make for a confident experience buying and selling land through the team at Midwest Land Group. If you're in the market, give Thomas a call.



**THOMAS ALLEN**, LAND AGENT  
**218.656.0061**  
TAllen@MidwestLandGroup.com



**MidwestLandGroup.com**

This property is being offered by Midwest Land Group, LLC. 913.674.8010. All information provided by Midwest Land Group, LLC or their agents was acquired from sources deemed accurate and reliable, however we do not warrant its accuracy or completeness. Midwest Land Group, LLC assumes no liability for error, omission or investment results. Midwest Land Group, LLC. Licensed in Alabama, Arkansas, Illinois, Indiana, Iowa, Kansas, Kentucky, Louisiana, Minnesota, Mississippi, Missouri, Montana, Nebraska, Ohio, Oklahoma, South Dakota, Tennessee, Texas, Wisconsin, and Wyoming.