

MIDWEST LAND GROUP PRESENTS

20 ACRES IN

BATES COUNTY MISSOURI



16223 NORTHWEST COUNTY ROAD 701 ARCHIE, MO 64725

MIDWEST LAND GROUP IS HONORED TO PRESENT

RESORT-STYLE LUXURY ESTATE ON 20 +/- ACRES

Situated South of Kansas City, this one-of-a-kind luxury estate offers an exceptional blend of architectural sophistication, resort-style amenities, and peaceful country privacy. Set on approximately 20 private acres, the newly constructed 9,187 square foot custom-built residence reflects uncompromising attention to detail throughout.

The home features four bedrooms, five full bathrooms, and two half baths, seamlessly combining refined craftsmanship with advanced smart-home technology inside and out. Resort-style amenities include a heated and cooled 18'x36' shotcrete pool, pool house with kitchen, outdoor kitchen, heated lanai with fireplace and television, sauna, steam shower, private theater room, wine room, and dedicated exercise space.

The expansive primary suite offers a spa-like retreat with his-and-hers closets, steam shower, heated towel drawer, oversized vanities, and thoughtful design elements rarely found outside the most exclusive luxury homes. Additional features include a whole-house generator, elevator, whole-house water purification system, and a three-car garage with

full HVAC, electric vehicle charging capability, and a dog washing station.

Supporting improvements include a recently constructed 28'x30' shop with electric and water, plumbed and framed for a bathroom, along with a greenhouse and chicken coop on concrete pads for those seeking a more self-sufficient lifestyle. An electronic gated entrance, scenic views, and a quiet rural setting complete this exceptional offering, all while remaining in close proximity to Interstate 49 for convenient regional access.

There is one existing neighboring residence nearby, with all surrounding land currently in agricultural use, helping to ensure long-term low-density surroundings and overall stability of the area. This rare opportunity to own a luxury estate typically found in Kansas City's most prestigious neighborhoods is now available in a secluded, private country setting. Customizable acreage, additional acreage, and buildings available. Call Paul Lowry at (816) 500-2513 to schedule your private tour today.

PROPERTY FEATURES

COUNTY: **BATES** | STATE: **MISSOURI** | ACRES: **20**

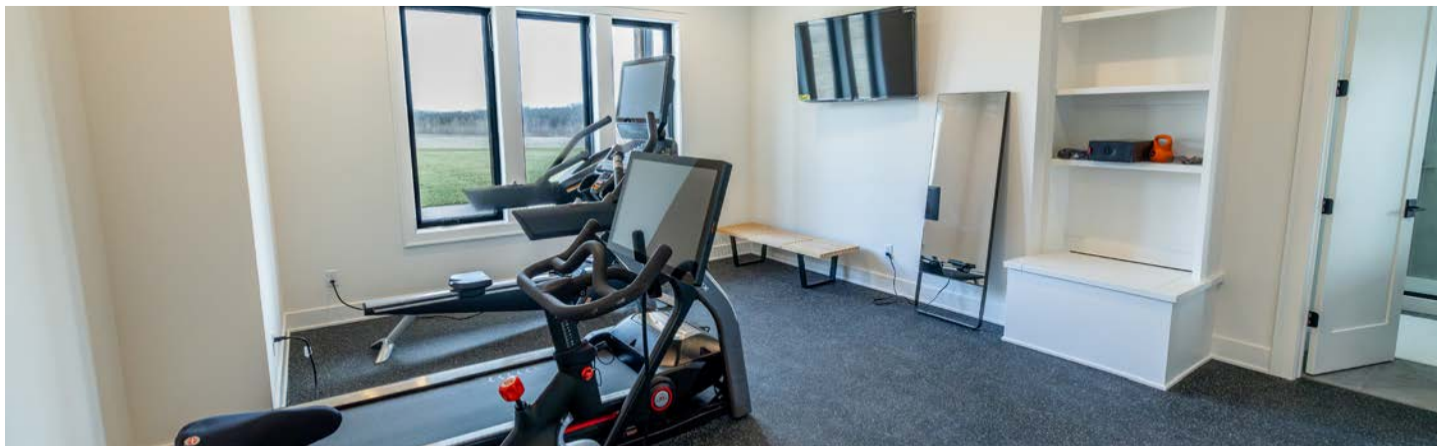
- 9,187 square feet of newly constructed custom home
- 4 bedroom, 5 full bathrooms, 2 ½ baths
- Sauna, theater room, exercise room, wine room
- Full smart home connection inside and out
- Massive master bedroom and bath
- His/hers closets
- Steam shower, heated towel drawer, large vanities
- Large 3-car garage with full HVAC and dog washing station
- Wired for an electric vehicle charger
- 18'x36' shotcrete pool, heated and cooled
- 2 large pool decks
- Outdoor kitchen next to the pool
- Pool house with kitchen
- Heated Lanai with TV and fireplace
- 28'x30' new outbuildings with textured metal siding
- Greenhouse and chicken coop
- Amazing views
- Electronic gated entrance
- Close access to Interstate 49

NEWLY CONSTRUCTED HOME

A newly constructed 9,187 square-foot custom-built home with 4 bedrooms, 5 full baths, and 2 ½ baths. Every attention to detail has been thought out in the design of this home. Offering the most luxurious amenities you will find in the most secluded country setting.



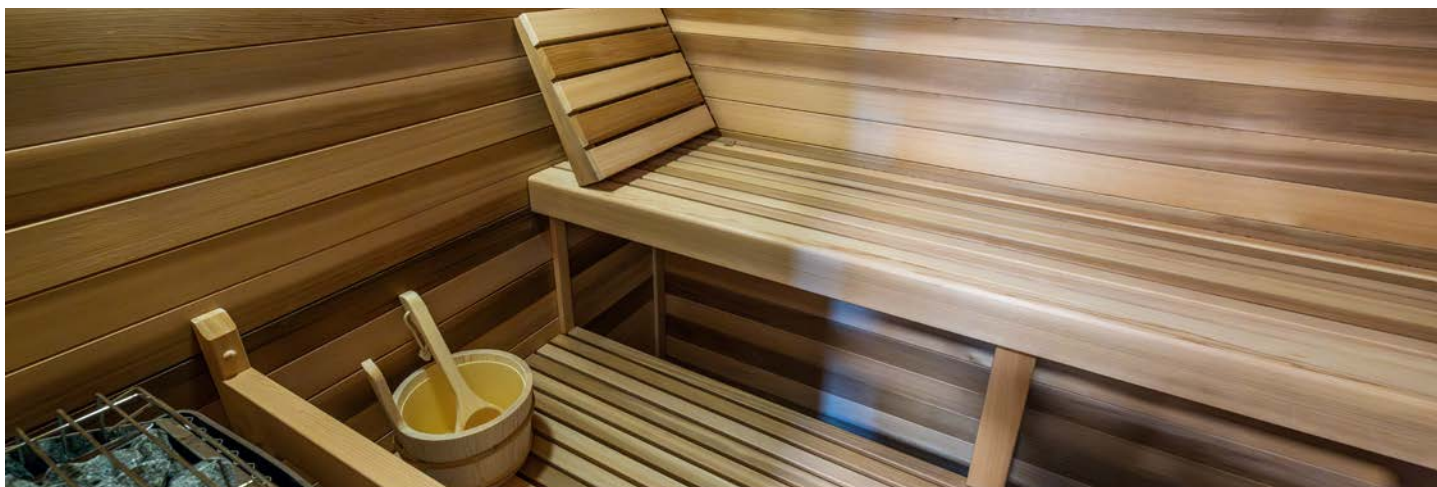
EXERCISE ROOM



THEATER ROOM



SAUNA



SHOP, GREENHOUSE, AND CHICKEN COOP

A 28'x30' shop has recently been constructed North of the house with electric and water, plumbed and framed for a bathroom, with textured metal siding. A large greenhouse and chicken coop are located adjacent on concrete pads for those who prefer to be more self-sufficient.



OUTDOOR RECREATION

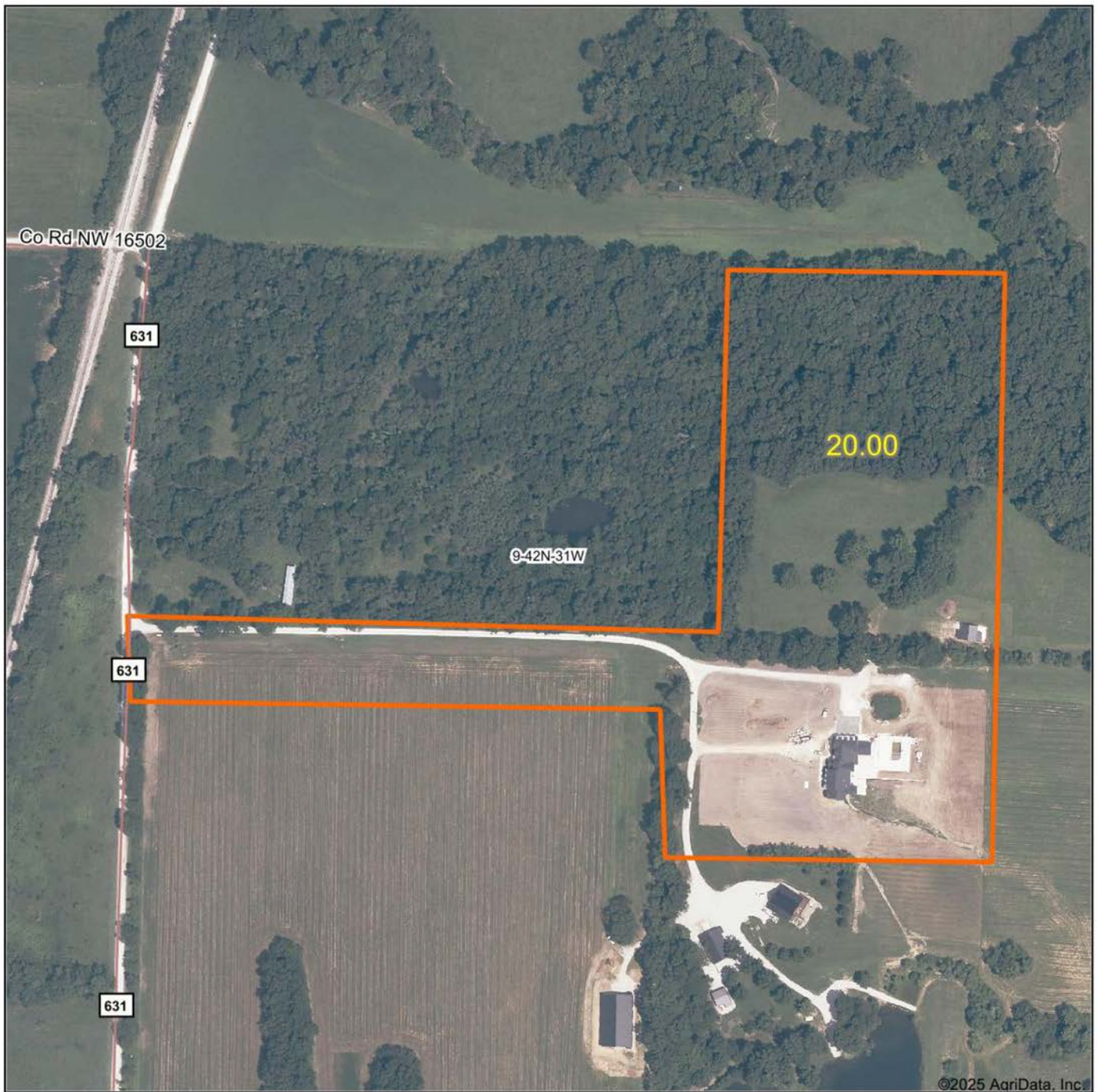
Relax and entertain with a heated pool, outdoor kitchen, pool house, and cozy lanai with fireplace and TV.



ADDITIONAL INTERIOR PHOTOS



AERIAL MAP



Boundary Center: 38° 27' 29.07, -94° 21' 10.73

0ft 309ft 618ft



Maps Provided By:



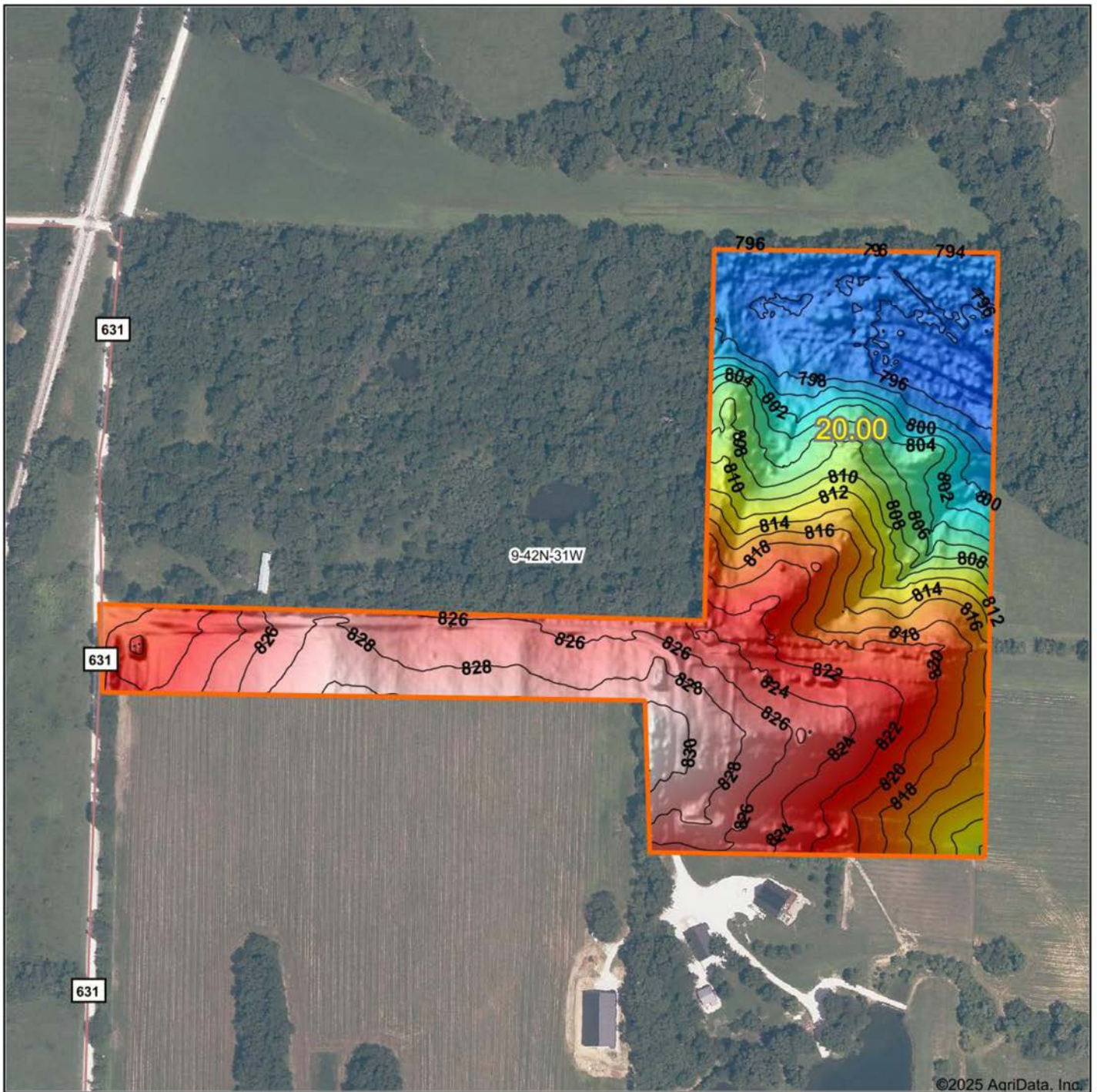
© AgriData, Inc. 2023 www.AgriDataInc.com

9-42N-31W
Bates County
Missouri

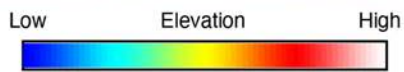


9/22/2025

HILLSHADE MAP



©2025 AgriData, Inc.



Source: USGS 1 meter dem
 Interval(ft): 2
 Min: 791.8
 Max: 831.9
 Range: 40.1
 Average: 815.1
 Standard Deviation: 11.55 ft



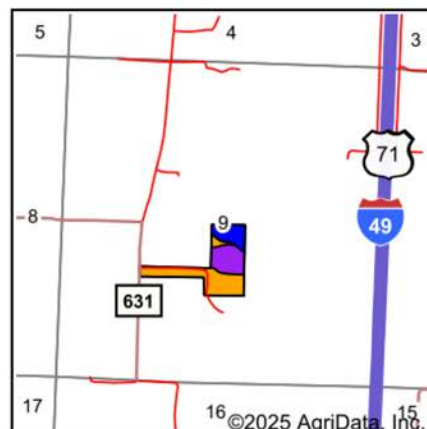
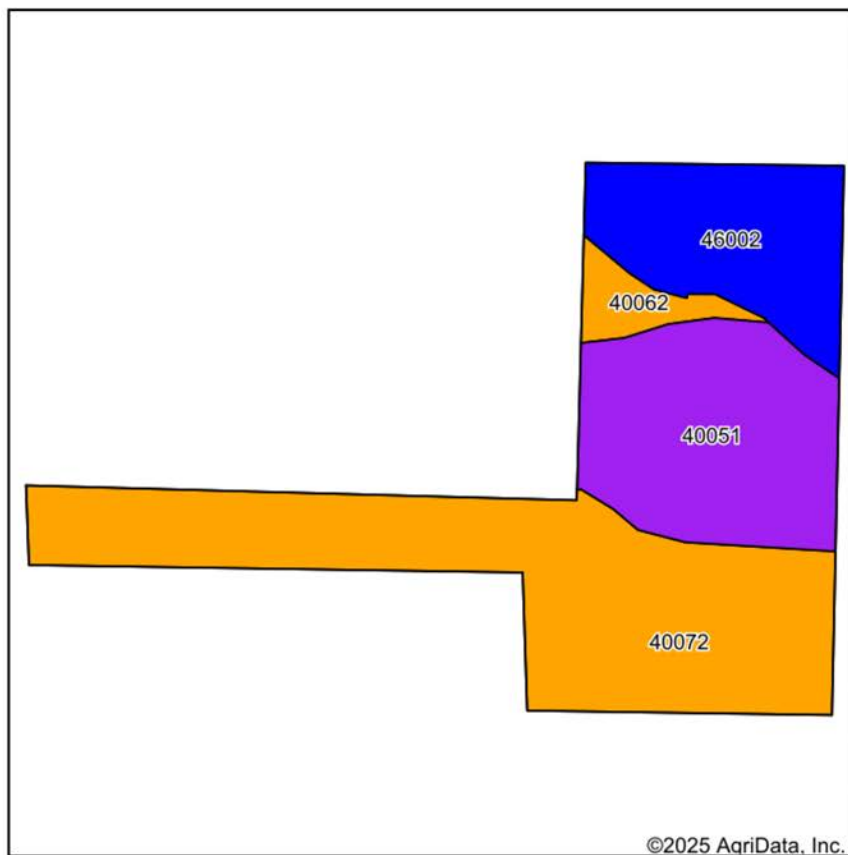
9-42N-31W
Bates County
Missouri

Boundary Center: 38° 27' 29.07, -94° 21' 10.73



Maps Provided By:
surety
 CUSTOMIZED ONLINE MAPPING
 © AgriData, Inc. 2023 www.AgriDataInc.com

SOILS MAP



State: **Missouri**
 County: **Bates**
 Location: **9-42N-31W**
 Township: **Deer Creek**
 Acres: **20**
 Date: **9/22/2025**



Maps Provided By:

 CUSTOMIZED ONLINE MAPPING
 © AgriData, Inc. 2023 www.AgriDataInc.com



Soils data provided by USDA and NRCS.

Area Symbol: MO013, Soil Area Version: 28

Code	Soil Description	Acres	Percent of field	Non-Irr Class Legend	Non-Irr Class *c	Range Production (lbs/acre/yr)	*n NCCPI Overall	*n NCCPI Corn	*n NCCPI Soybeans
40072	Kenoma silt loam, 1 to 3 percent slopes	9.93	49.8%		Ille	3888	59	56	59
40051	Coweta loam, 5 to 14 percent slopes	5.46	27.3%		Vls	0	37	37	24
46002	Hepler silt loam, 0 to 2 percent slopes, occasionally flooded	3.80	19.0%		Ilw	8100	85	85	80
40062	Eram silt loam, 2 to 5 percent slopes, eroded	0.81	4.0%		Ille	0	41	41	29
Weighted Average					3.63	3469.4	*n 57.2	*n 55.7	*n 52.2

*n: The aggregation method is "Weighted Average using all components"

*c: Using Capabilities Class Dominant Condition Aggregation Method

OVERVIEW MAP



AGENT CONTACT

Raised in a Central Iowa farming community, Paul Lowry was always outdoors. Whether working the land baling hay, farming row crops, raising livestock and horses or roaming acres hunting, hiking and fishing, his love of the land was formed at an early age. With this foundation and years of professional experience as a wildlife biologist, Paul sees the unique features and potential in a property, which is exactly what buyers and sellers need in today's market.

Paul earned his animal ecology degree from Iowa State University and moved to Missouri in 2001, spending almost 14 years with the Missouri Department of Conservation. He has taught habitat and wildlife management courses, co-chaired the Private Land Deer Management Team, was a hunter education and private land burn instructor, and assisted with writing state deer management and hunting guides to help landowners create and sustain the best hunting and/or farming conditions possible on a property.

In 2015, Paul's wife, Kari, was offered a career opportunity in Australia where Paul worked as a wildland firefighter. The couple now resides back in Missouri, where Paul is putting his expertise in land management and conservation to work on his clients' behalf as a Midwest Land Group agent. Spending years walking and evaluating farms, mapping out habitat projects and working with farm bill programs, he understands what makes land special to each buyer and seller. Knowing everyone has different needs and goals, Paul's expertise will help you find the perfect hunting tract, farm, recreational haven or investment property.



PAUL LOWRY, LAND AGENT
816.500.2513
PLowry@MidwestLandGroup.com



MidwestLandGroup.com

This property is being offered by Midwest Land Group, LLC. 913.674.8010. All information provided by Midwest Land Group, LLC or their agents was acquired from sources deemed accurate and reliable, however we do not warrant its accuracy or completeness. Midwest Land Group, LLC assumes no liability for error, omission or investment results. Midwest Land Group, LLC. Licensed in Alabama, Arkansas, Illinois, Indiana, Iowa, Kansas, Kentucky, Louisiana, Minnesota, Mississippi, Missouri, Montana, Nebraska, Ohio, Oklahoma, South Dakota, Tennessee, Texas, Wisconsin, and Wyoming.