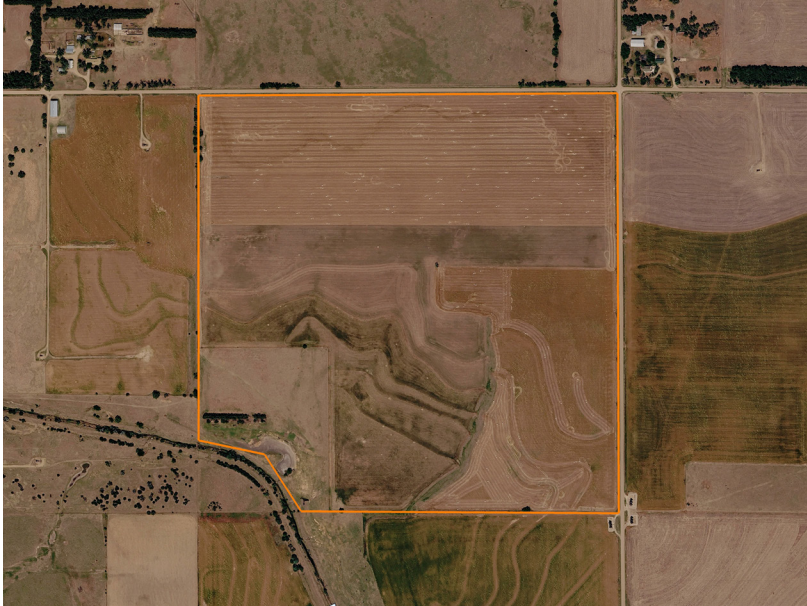


LAND FOR SALE

BARTON COUNTY CROPLAND & PASTURE

COUNTY: **BARTON**
STATE: **KANSAS**
ACRES: **153.98**



PROPERTY FEATURES

- NE/4 Section 12, Township 19 South, Range 12 West
- Approximately 138.81 +/- acres cropland
- Approximately 15.12 +/- acres native grass pasture
- 51 +/- acres second-year alfalfa
- Remaining cropland planted to wheat
- 5-strand barbed wire fence
- Windmill livestock well
- 1 acre pond
- Little Cheyenne Creek frontage
- Class II soils
- NCCPI rating of 60.9



For more information, contact:

KAYANNA HEMMEKE, Land Agent

620.566.7889 | KHammeke@MidwestLandGroup.com

MidwestLandGroup.com

This property is being offered by Midwest Land Group, LLC, 7111 W. 151st Street, Ste. 27, Overland Park, KS 66223, 913.674.8010.
Licensed in AL, AR, IA, IL, IN, KS, KY, LA, MN, MO, MS, MT, NE, OH, OK, SD, TN, TX, WI, and WY.

