

MIDWEST LAND GROUP PRESENTS

**.14 ACRES IN**

---

# **WASHINGTON COUNTY ARKANSAS**

**3444 NORTH GREENBRIAR DRIVE, FAYETTEVILLE, AR 72703**



[MidwestLandGroup.com](http://MidwestLandGroup.com)

MIDWEST LAND GROUP IS HONORED TO PRESENT

# GOLF COURSE TOWNHOME ON PARADISE VALLEY

This charming townhome, located next to Paradise Valley Golf Course, boasts stunning views of the 15th green and fairway. Designed with comfort and elegance in mind, it features beautiful wood flooring and large windows that invite natural light. The kitchen is equipped with granite countertops, and the spacious living area

flows seamlessly to a screened-in back porch, making it perfect for entertaining. With two generous bedrooms and two full baths, the home accommodates various living arrangements. Additionally, a two-car garage provides ample built-in storage, complemented by extra screened storage space beneath the covered porch.



## PROPERTY FEATURES

COUNTY: **WASHINGTON** | STATE: **ARKANSAS** | ACRES: **.14**

- Located on Paradise Valley Golf Course
- 2 bed, 2 bath
- 1,508 square feet
- Granite countertops
- Screened-in porch
- 2-car garage
- Large living space
- Built-in storage
- Covered storage under the porch
- Adjacent to paved biking and walking trails
- 15 minutes to the University of Arkansas
- 10 minutes to Lake Fayetteville

## 2 BED, 2 BATH

---



## SCREENED-IN PORCH

---



# LARGE LIVING SPACE

---



## 2-CAR GARAGE WITH BUILT-IN STORAGE

---



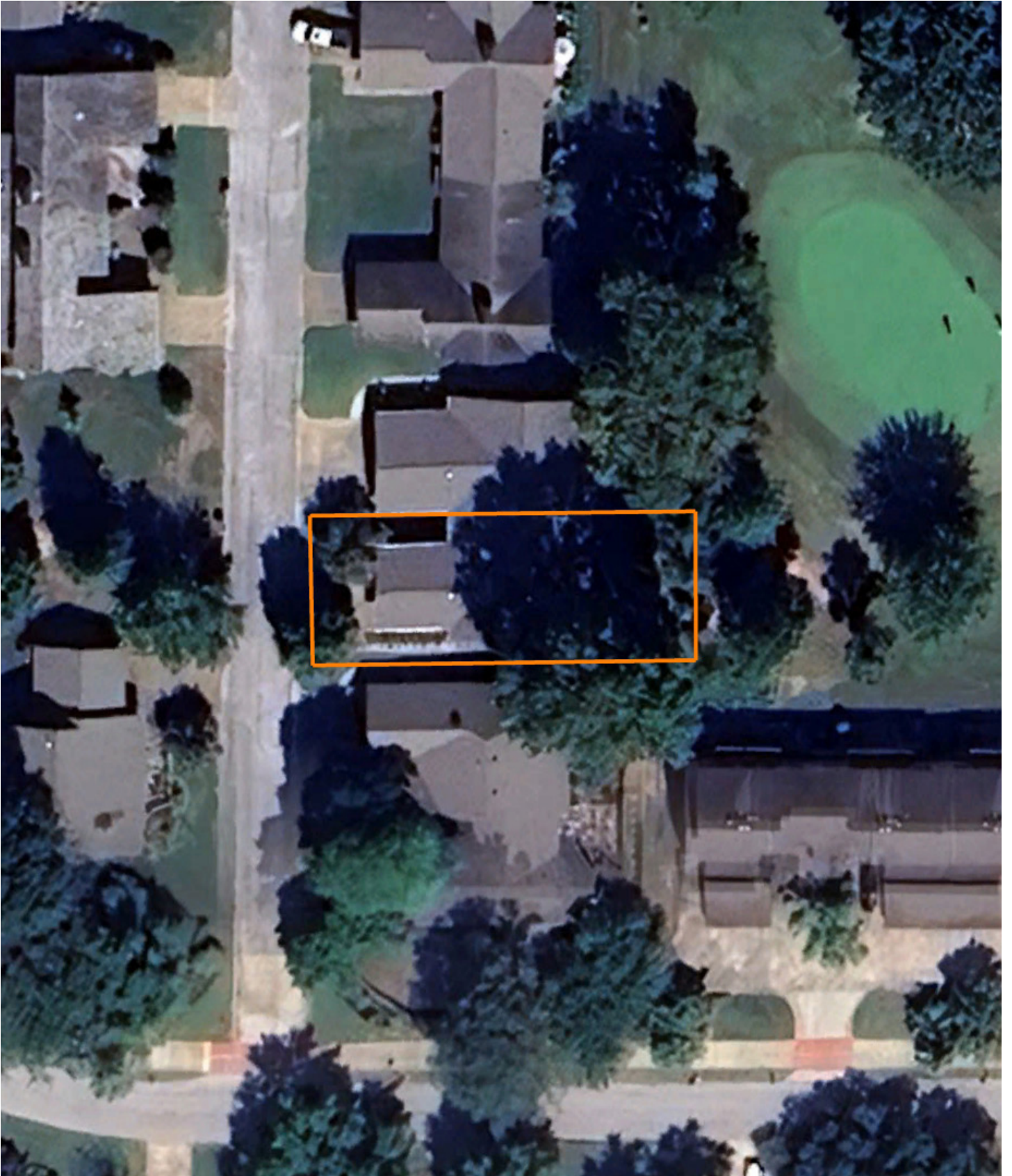
## GRANITE COUNTER TOPS

---



# AERIAL MAP

---



# OVERVIEW MAP



# AGENT CONTACT

Ben Williams is passionate about working with land and living life in the great outdoors. A native of Topeka, Kansas, Ben graduated from Kansas State University with dual Bachelor's Degrees in park management and conservation, as well as natural resource management.

During his college years, Ben conducted research on invasive plant and wildlife species to assess their impact on native species. His studies also covered wildlife habitat preservation, conservation, flooding and erosion control, and public hunting land management. Before joining Midwest Land Group, Ben worked as an arborist in Benton County, Arkansas, caring for trees and maintaining their health.

In his free time, Ben enjoys hunting waterfowl, golfing, and hiking. Now residing in Bentonville, Arkansas, with his wife Kaitlynn and son Bodie, Ben is a devoted family man whose care and understanding of people extends to his work as a land agent. His enthusiasm for helping clients achieve their goals is evident in his commitment to exceptional service. If you're looking to buy or sell land in Northwest Arkansas, don't hesitate to give Ben a call. He'll go above and beyond to ensure you find exactly what you're searching for.



**BEN WILLIAMS,**

LAND AGENT

**479.487.0177**

[BWilliams@MidwestLandGroup.com](mailto:BWilliams@MidwestLandGroup.com)



**MidwestLandGroup.com**

This property is being offered by Midwest Land Group, LLC. 913.674.8010. All information provided by Midwest Land Group, LLC or their agents was acquired from sources deemed accurate and reliable, however we do not warrant its accuracy or completeness. Midwest Land Group, LLC assumes no liability for error, omission or investment results. Midwest Land Group, LLC. Licensed in Alabama, Arkansas, Illinois, Indiana, Iowa, Kansas, Kentucky, Louisiana, Minnesota, Mississippi, Missouri, Montana, Nebraska, Ohio, Oklahoma, South Dakota, Tennessee, Texas, Wisconsin, and Wyoming.