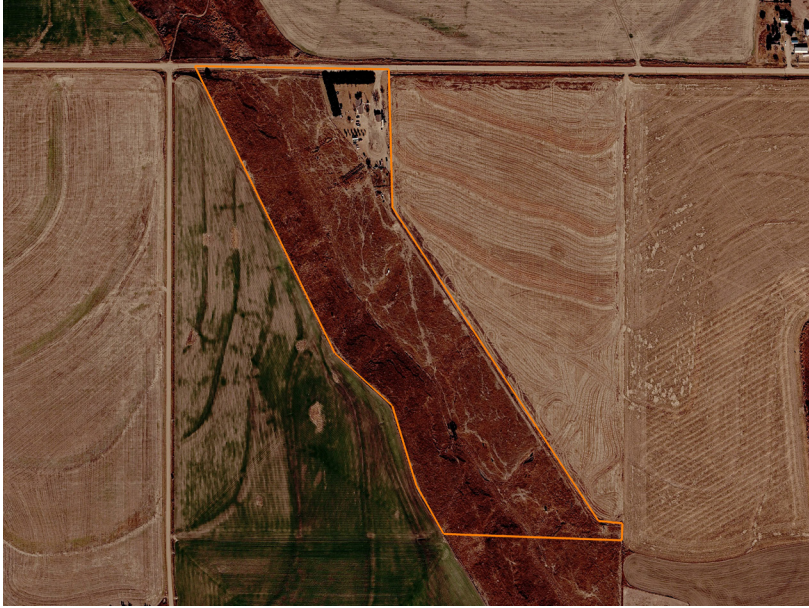


LAND FOR SALE

# BEAUTIFUL HOME AND ACREAGE NEAR THE GOLF COURSE

COUNTY: **SHERIDAN**  
STATE: **KANSAS**  
ACRES: **48.4**



## PROPERTY FEATURES

- Great location
- 2,800 sq. ft. ranch farmhouse
- Mature windbreak
- Oak trees
- Large kitchen
- Large living area
- 5 bed, 2 bath
- Lots of storage
- Fully finished basement
- 2 car garage
- 864 sq. ft. outbuilding/garage
- Chicken coop

For more information, contact:

**MITCH NEWCOMER**, Land Agent

**816.569.1965** | [MNewcomer@MidwestLandGroup.com](mailto:MNewcomer@MidwestLandGroup.com)

**MidwestLandGroup.com**

This property is being offered by Midwest Land Group, LLC, 7111 W. 151st Street, Ste. 27, Overland Park, KS 66223, 913.674.8010.  
Licensed in AL, AR, IA, IL, IN, KS, KY, LA, MN, MO, MS, MT, NE, OH, OK, SD, TN, TX, WI, and WY.

