

MIDWEST LAND GROUP PRESENTS



9.5 ACRES
SHANNON COUNTY, MO

000 County Road 421, Birch Tree, Missouri 65438



MIDWEST LAND GROUP IS HONORED TO PRESENT

ULTIMATE OZARK BASECAMP: 9.5 ACRES OF TIMBER & TRAILS

Escape to the heart of Shannon County with this 9.5 +/- acre timber tract designed for the serious outdoorsman. Located on County Road 421 just outside of Birch Tree, Missouri, this property serves as the perfect private launchpad for hunting, fishing, backcountry exploration, or a personal retreat! A ready-to-use hunter's retreat, this acreage features a gated driveway for immediate security and a camper/cabin site tucked into the timber, ideal for a hunt camp, off-grid shed, or camper setup. An established interior trail system allows for stealth treks to your stand or easy ATV access across the ridge.

This ground is highlighted by its established timber stands, bedding ground, and quality mast for local whitetail deer and wild turkey, in addition to other wild game. A seasonal creek meanders through the property, serving as a natural travel corridor and access

for game. Additionally, this property is a gateway to the Mark Twain National Forest, giving you thousands of additional acres to scout and hunt just minutes away.

This property has world-class fishing and floating. When you aren't in the woods, you're in the center of Missouri's "River Country." The Jack's Fork and Current Rivers are located just a short drive away. These National Scenic Riverways offer some of the best smallmouth bass fishing and gravel-bar camping in the Midwest. The Eleven Point River is another nearby world-class cold-water spring-fed river providing premier trout fishing opportunities. Whether you're looking for a seasonal hunting camp or a permanent homestead in a sportsman's paradise, this Shannon County gem is ready for your boots on the ground. Birch Tree is situated in the heart of the Missouri Ozarks, known for its rugged beauty and outdoor recreation.

PROPERTY FEATURES

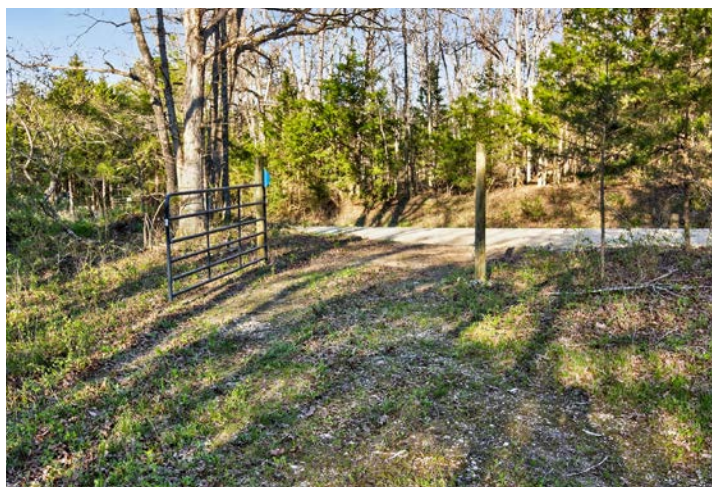
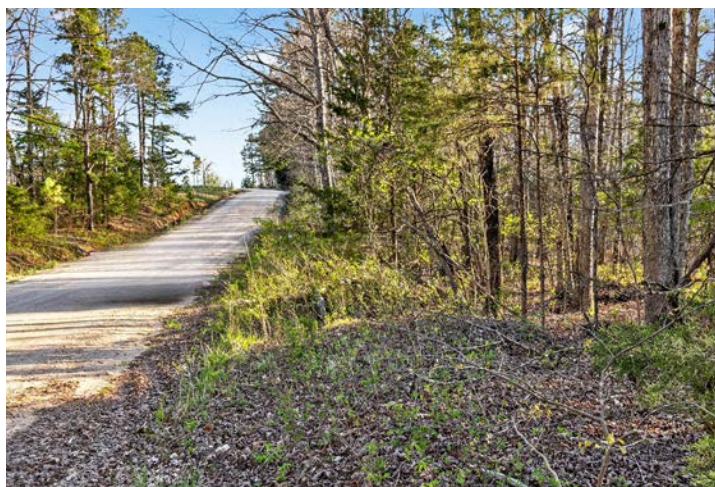
COUNTY: **SHANNON** | STATE: **MISSOURI** | ACRES: **9.5**

- Gated entrance and pad
- Camper/cabin site prepped for off-grid shed or base camp
- Gentle hillside and flat ground make for a fantastic backdrop for hunting, camping & enjoyment on this piece of ground
- Established timber stands, bedding ground, and quality mast for abundant game animals
- ATV/UTV trails to access property and stand locations
- Seasonal wet weather creeks meander throughout the property, creating access and travel corridors
- The area is surrounded by thousands of acres of the Mark Twain National Forest, perfect for extended hunting and hiking
- Nearby highlights include the Jack's Fork, Eleven Point, and Current Rivers, famous for world-class floating, fishing, and scenic bluffs
- Community: Located approximately 11 miles east of Mountain View and 8.5 miles west of Winona
- 9.5 +/- acres
- Direct frontage on County Road 421

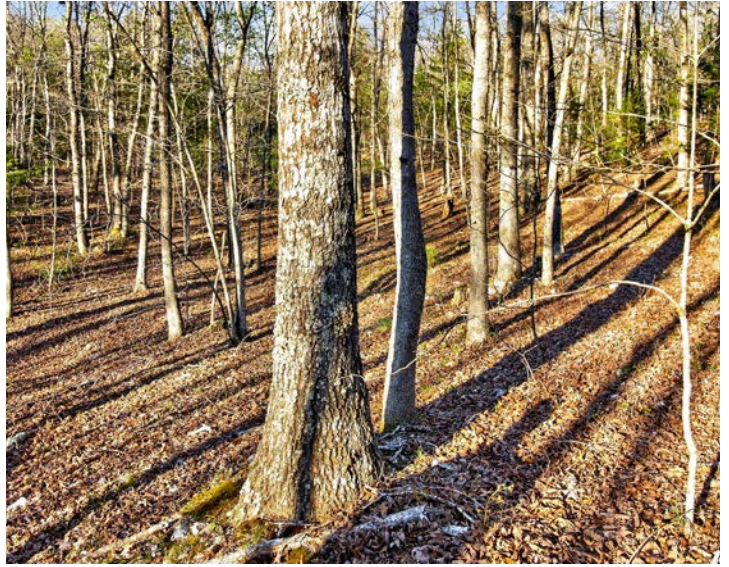
CABIN/CAMPER SITE



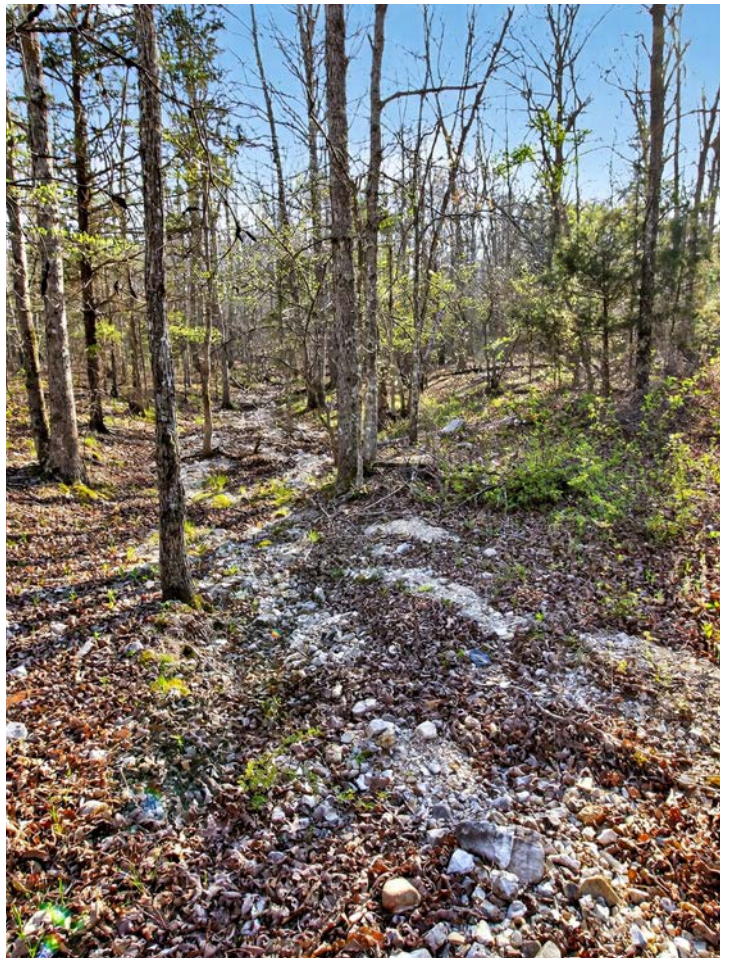
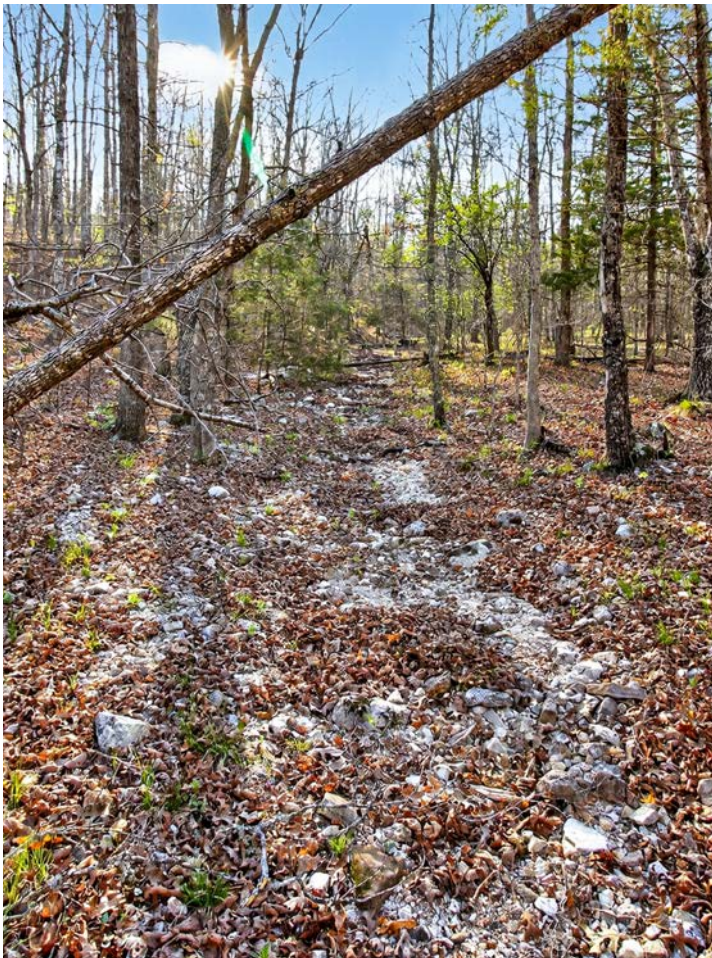
GATED ENTRANCE



ESTABLISHED TIMBER STANDS



INTERIOR TRAIL SYSTEM



AERIAL MAP



Boundary Center: 37° 1' 27.31, -91° 26' 42.18

0ft 203ft 405ft



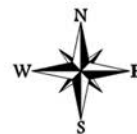
Maps Provided By:



© AgriData, Inc. 2025

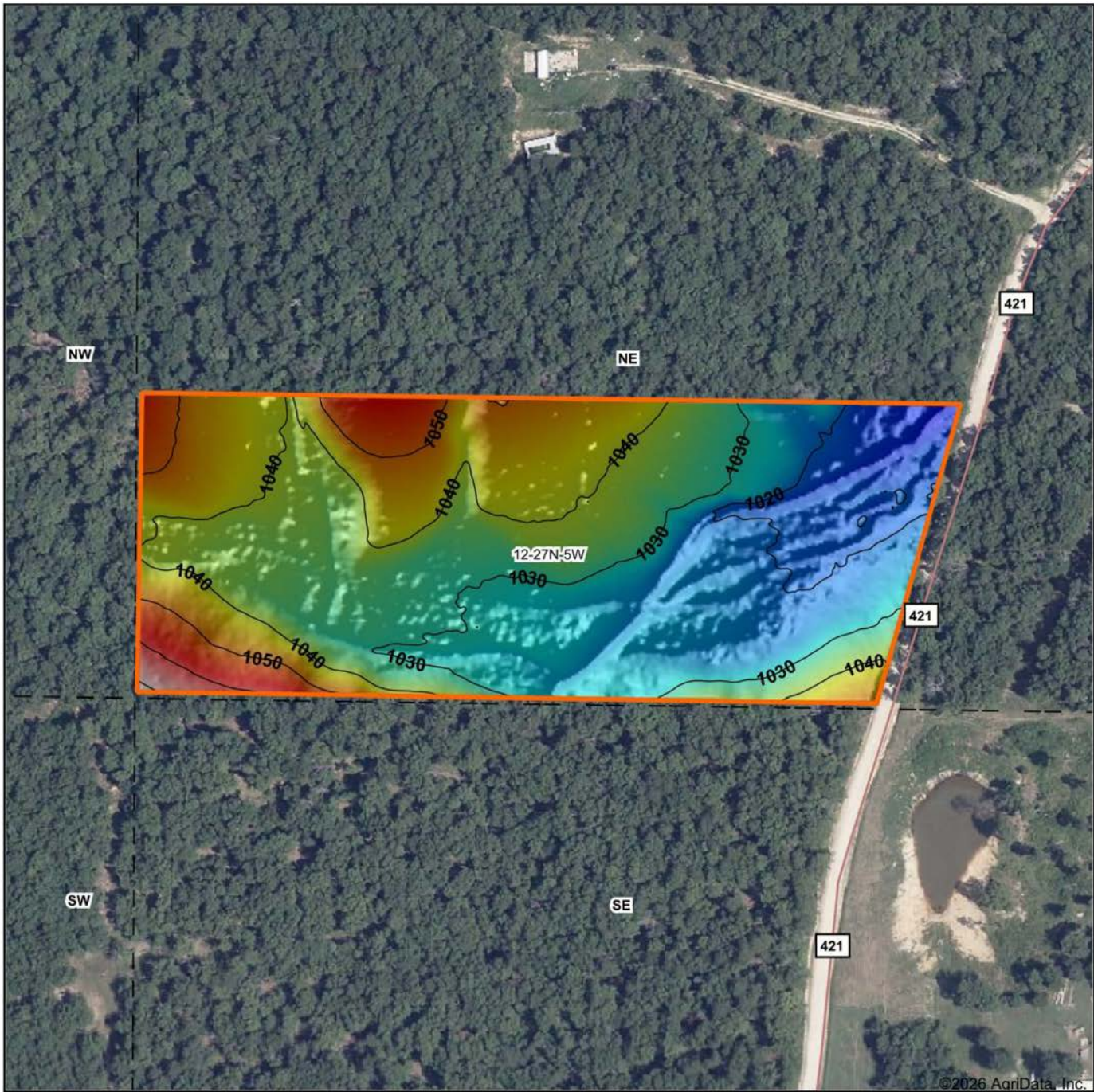
www.AgriDataInc.com

12-27N-5W
Shannon County
Missouri

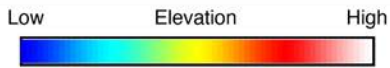


3/27/2026

HILLSHADE MAP

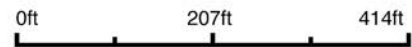


©2026 AgriData, Inc.



Maps Provided By:
surety[®]
 CUSTOMIZED ONLINE MAPPING
 © AgriData, Inc. 2025 www.AgriDataInc.com

Source: USGS 1 meter dem
 Interval(ft): 10
 Min: 1,013.1
 Max: 1,071.6
 Range: 58.5
 Average: 1,034.2
 Standard Deviation: 10.56 ft

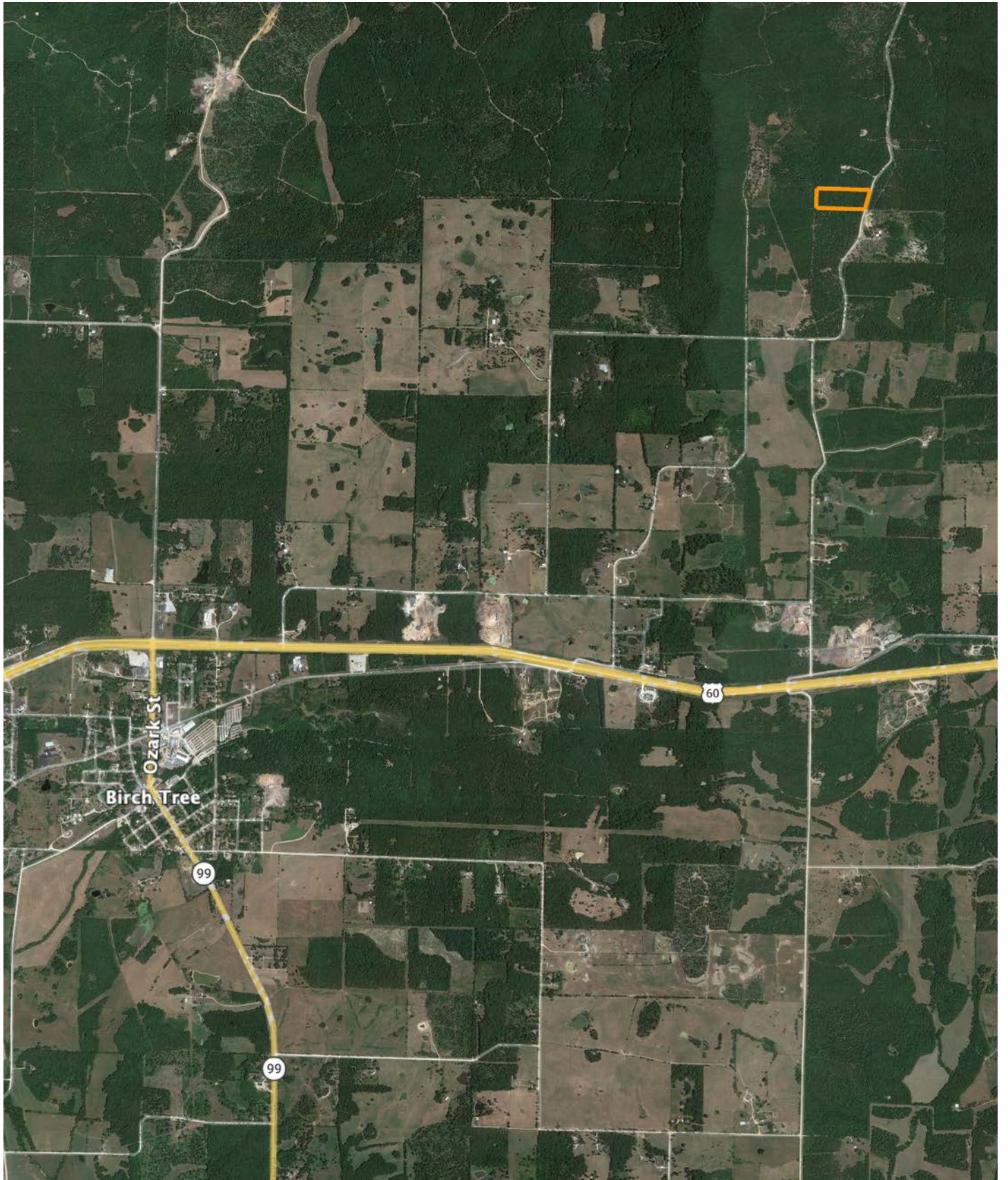


3/27/2026

12-27N-5W
Shannon County
Missouri

Boundary Center: 37° 1' 27.31, -91° 26' 42.18

OVERVIEW MAP



AGENT CONTACT

Rooted in a lifelong love for the outdoors and a deep commitment to people, Andy Ogle brings passion, leadership, and integrity to every land transaction. Born in Knoxville, Tennessee and raised on a farm in Lenoir City, Andy grew up exploring springs, fishing a 10-acre pond, and learning firsthand the value of working and stewarding the land. Today, he and his wife, Olivia, along with their three children, Wyatt, Boone, and Josie—call Cape Girardeau, Missouri home, where their family life continues to center around faith, family, and the outdoors.

For nearly 25 years, Andy served in full-time ministry, including 22 years on staff with Young Life, building teams, leading organizations, and investing deeply in people. His professional background also includes outside sales in construction materials, general management of a motorcycle dealership, national account management within the outdoor industry, deer management services, and owning and operating a Christmas tree farm. These roles refined his ability to lead, negotiate, solve problems, and follow through with consistency.

Andy is an avid whitetail hunter, Certified Hunt Master in Tennessee, and hands-on land manager who understands habitat improvement, property potential, and the long-term value of ground. He believes knowing a property means walking it, learning its story, understanding its neighbors, and maximizing its strengths. As he often says, "If I don't know it, I'll find out."

His relational approach, business acumen, and unwavering work ethic position him to serve his clients with excellence. If you're ready to buy or sell land, Andy Ogle is ready to work relentlessly on your behalf and steward your property as if it were his own.



ANDY OGLE

LAND AGENT

573.290.2293

Aogle@MidwestLandGroup.com



MidwestLandGroup.com

This property is being offered by Midwest Land Group, LLC. 913.674.8010. All information provided by Midwest Land Group, LLC or their agents was acquired from sources deemed accurate and reliable, however we do not warrant its accuracy or completeness. Midwest Land Group, LLC assumes no liability for error, omission or investment results. Midwest Land Group, LLC. Licensed in Alabama, Arkansas, Illinois, Indiana, Iowa, Kansas, Kentucky, Louisiana, Minnesota, Mississippi, Missouri, Montana, Nebraska, Ohio, Oklahoma, South Dakota, Tennessee, Texas, Wisconsin, and Wyoming.