

MIDWEST LAND GROUP PRESENTS

10 ACRES IN

SCOTT COUNTY ARKANSAS



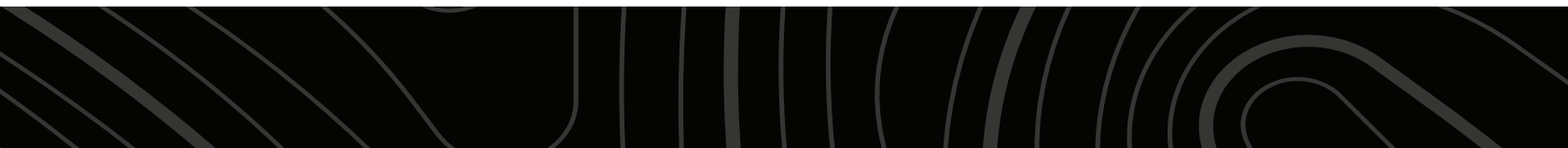
MidwestLandGroup.com

MIDWEST LAND GROUP IS HONORED TO PRESENT

BEAUTIFUL LOG CABIN ON 10 +/- PRIVATE ACRES

If you have been looking for privacy and seclusion, but don't want the maintenance that comes with large acreage, you need to take a look at this beautiful log cabin and acreage! The 10 +/- acres is located off of a quiet county road with very few neighbors. The 1,250 +/- square foot log cabin is just that, a true log cabin finished with all of the cozy amenities that you would expect - like the rock fireplace, front and back porches, and loft overlooking the living area. The cabin speaks for itself, with beautiful rustic finishes that perfectly fit the space. Outside, there are flower beds and garden areas, barns, outbuildings, and even a treehouse with a slide.

The 10 +/- acres is truly special as well, with no neighbors in sight, and an amount of privacy and seclusion that is rare to find on a tract this size. The land is mostly open, with rows of timber around the property boundary and scattered across the acreage. The Ouachita National Forest is just 1/4 mile away, giving access to hundreds of thousands of acres of public land with great hunting opportunities. All of this is located just 10 miles from Waldron, Arkansas. If you have been looking for a cabin, Airbnb, weekend getaway, or retirement home, you don't want to miss this one! Call Jake Fowler to schedule your private tour today!



PROPERTY FEATURES

PRICE: **\$239,000** | COUNTY: **SCOTT** | STATE: **ARKANSAS** | ACRES: **10**

- 1,250 +/- sq. ft. log home
- 3 bed, 2 bath
- National forest access a quarter of a mile away
- Rock fireplace
- Nice porches
- Barns and outbuildings
- Some fencing in place
- Rural water
- Water well for backup water supply
- Very private and secluded
- Treehouse
- Garden and flower bed areas
- 10 miles from Waldron, AR
- 50 miles from Fort Smith, AR



1,250 +/- SQ. FT. LOG HOME



3 BED, 2 BATH



ROCK FIREPLACE

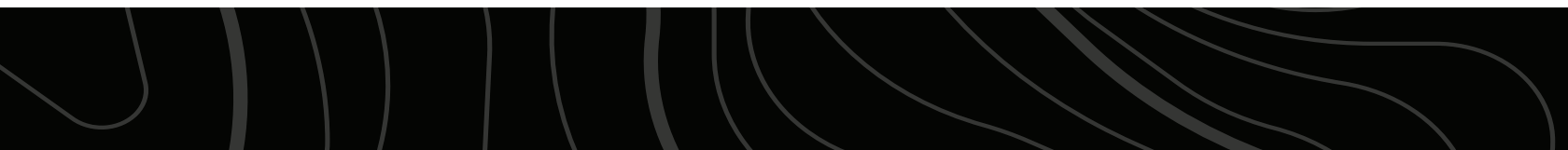


NICE PORCHES



TREEHOUSE & GARDEN

Outside, there are flower beds and garden areas, barns, outbuildings, and even a treehouse with a slide.



ADDITIONAL PHOTOS



AERIAL MAP



Boundary Center: 34° 56' 42.44, -94° 13' 23.2

0ft 279ft 559ft



Maps Provided By:



© AgriData, Inc. 2025 www.AgriDataInc.com

6-3N-30W
Scott County
Arkansas



4/20/2026

TOPOGRAPHY MAP



©2026 AgriData, Inc.



Maps Provided By:



CUSTOMIZED ONLINE MAPPING
© AgriData, Inc. 2025 www.AgriDataInc.com

Source: USGS 1 meter dem

Interval(ft): 1.0

Min: 708.6

Max: 741.9

Range: 33.3

Average: 731.4

Standard Deviation: 5.09 ft

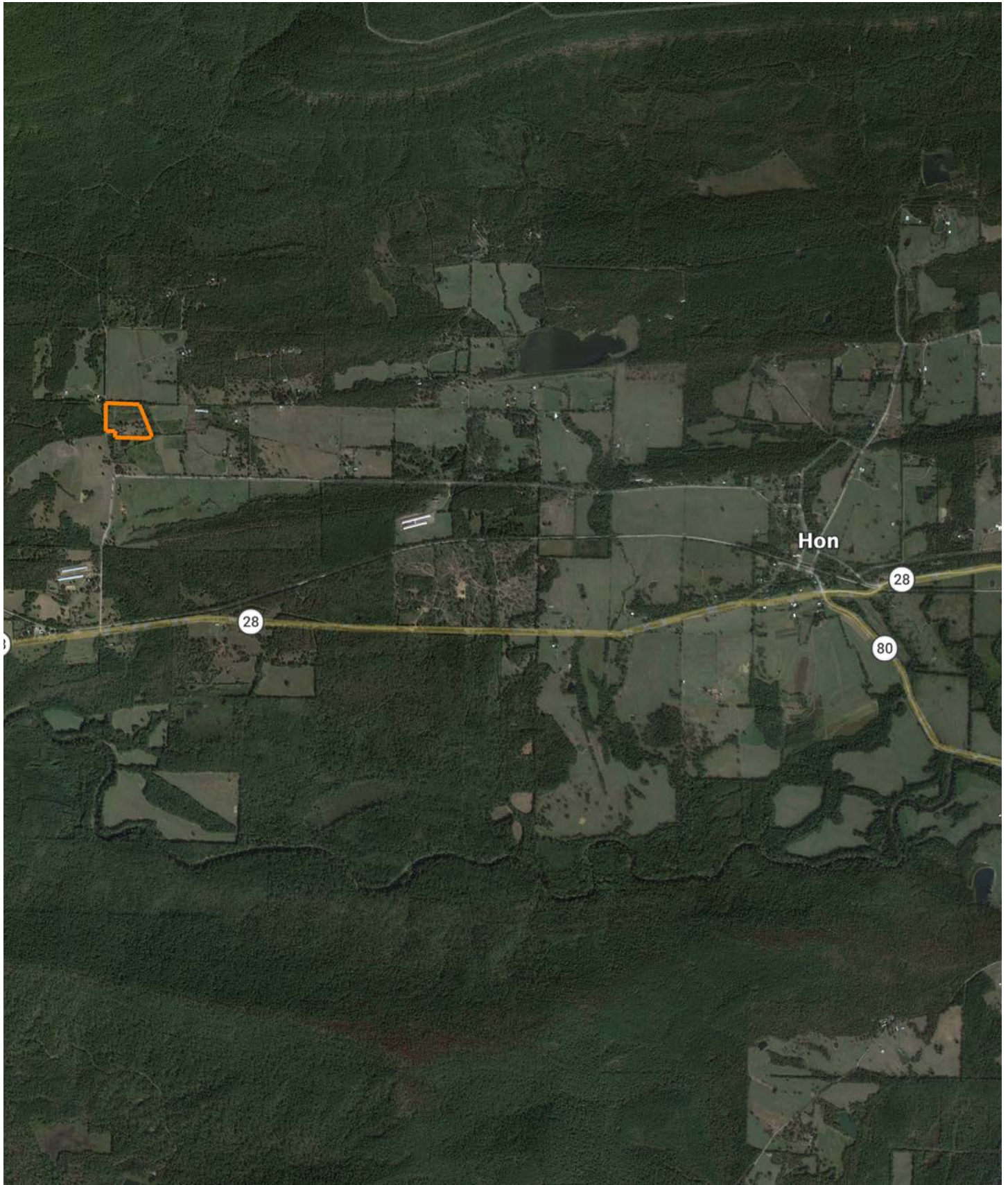


4/20/2026

6-3N-30W
Scott County
Arkansas

Boundary Center: 34° 56' 42.44, -94° 13' 23.2

OVERVIEW MAP



AGENT CONTACT

Jake Fowler has a love for agriculture. Between his formal education and lifetime of experience with cattle, horses, and poultry, he has a deep understanding of farming operations and how to maximize the efficiency of land. He knows the animals that can be raised in different areas, that soil and grass quality can make all the difference, and that location is integral to a farm's success. Jake has traveled all over western Arkansas and the River Valley area, gaining knowledge and contacts in the cattle, hay, horse, poultry, and timber industries. Born in Russellville, Arkansas, Jake went to Western Yell County High School in Havana, Arkansas, and Connors State College in Warner, Oklahoma, where he graduated cum laude. Before coming to Midwest Land Group, Jake pursued a career in logistics and land management.

Since joining Midwest Land Group, Jake has worked across western Arkansas and the Arkansas River Valley assisting clients with buying and selling cattle farms, estates, homes on acreage, hunting properties, timberland, and more. When he isn't busy helping clients, you can find Jake busy on the farm taking care of his land and cattle, deer hunting, turkey hunting, fishing, or team roping. Jake, his wife Lexie, and their son Wylie reside on their farm in Danville, Arkansas. Give Jake a call today to put his experience to work for you.



JAKE FOWLER, LAND AGENT
479.393.1997
JFowler@MidwestLandGroup.com



MidwestLandGroup.com

This property is being offered by Midwest Land Group, LLC. 913.674.8010. All information provided by Midwest Land Group, LLC or their agents was acquired from sources deemed accurate and reliable, however we do not warrant its accuracy or completeness. Midwest Land Group, LLC assumes no liability for error, omission or investment results. Midwest Land Group, LLC. Licensed in Alabama, Arkansas, Illinois, Indiana, Iowa, Kansas, Kentucky, Louisiana, Minnesota, Mississippi, Missouri, Montana, Nebraska, Ohio, Oklahoma, South Dakota, Tennessee, Texas, Wisconsin, and Wyoming.