

MIDWEST LAND GROUP PRESENTS



SAINT FRANCOIS COUNTY, MO

847 ACRES



MidwestLandGroup.com

MIDWEST LAND GROUP IS HONORED TO PRESENT

TWIN LAKES WHITETAILS HUNTING PRESERVE

Midwest Land Group proudly presents the Twin Lakes Whitetails Hunting Preserve, a remarkable 847 +/- acre property designed as a turn-key trophy hunting destination in Saint Francois County, Missouri. This unique preserve is renowned for its exceptional whitetail genetics and outstanding amenities, making it an ideal spot for outdoorsmen and those seeking an extraordinary retreat.

The property showcases the scenic beauty of the eastern Ozarks, with two stunning lakes welcoming visitors as they wind through the valley toward the main lodge. Multiple high points provide expansive views in every direction. Approximately 35 acres of open ground, established roads and trails, and a robust perimeter fence contribute to the functionality and security of this remarkable estate. Located just minutes outside of Bismarck, Missouri, a large property like this with a convenient location in Southeast Missouri, just over an hour from the Saint Louis metro, is hard to find.

Enhancing the allure of Twin Lakes Whitetails is the lakefront main lodge and accompanying cabins. Guests can wake up to captivating views of an 18-acre lake from the expansive waterfront deck. Opportunities to fish, swim, or boat are just steps away, and the presence of bald eagles and waterfowl adds to the natural charm of the lakeside setting. The main lodge is equipped with a commercial kitchen, built to provide amazing meals and entertain visitors. The cabins are fully furnished and feature complete kitchens, offering guests a comfortable and convenient stay. These cabins can be used for nightly rentals, providing a valuable source of income during periods outside of hunting season.

Twin Lakes Whitetails is home to a world-class deer breeding program, consistently producing superior

genetics and bucks scoring between 300 and 400 inches annually. The property is meticulously managed, and the supporting infrastructure is designed to maintain these high standards for years to come.

For decades, Twin Lakes Whitetails has attracted hunters eager to pursue trophy whitetails in a premier setting. The property is thoughtfully designed to deliver a once-in-a-lifetime hunting adventure, with large, elevated deer blinds and stands positioned in optimal locations throughout the property. Following a rewarding hunt, guests can take advantage of the well-equipped skinning shed and walk-in freezer, providing convenient facilities to process and preserve their game.

No expense was spared in developing the comprehensive infrastructure that supports the Preserve. Among the key facilities is a spacious 40'x60' shop, which features three large garage doors and an attached office. For the specialized care of newborn fawns, there is a 30'x96' utility shed outfitted with individual stalls. Additionally, several large machine sheds are located on the property, providing ample storage for equipment and machinery necessary to maintain the preserve's high standards and ongoing operations.

This property presents a wealth of possibilities. With its stunning natural setting and extensive amenities, it stands out as a truly one-of-a-kind offering. Whether you are interested in outdoor recreation, hunting, investment, or simply the peace and quiet of the Ozarks, this property delivers unmatched potential.

Showings are by appointment only. Please reach out to Land Agent Dane Werner to arrange your private showing and discover everything this remarkable property has to offer.

PROPERTY FEATURES

COUNTY: **SAINT FRANCOIS** | STATE: **MISSOURI** | ACRES: **847**

- 847 +/- acres of beautiful eastern Ozark terrain
- 35 +/- acres of open ground and roads/trails throughout
- 2 large, stocked lakes for fishing, swimming, and boating (approx. 15 and 18 acres)
- Established deer breeding operation with superior genetics
- Produces bucks that exceed 300" consistently
- Trophy whitetail deer hunting
- Large blinds, tree stands, feeders, skinning shed, and walk-in freezer
- Great turkey hunting
- Robust perimeter fencing around 780 +/- acres
- Established breeding pens
- 3,600 sq. ft. main lodge, 3-bed/3-bath
 - lakefront views
 - large waterfront deck, commercial kitchen, and large living room
- 1,200 +/- sq. ft. guest cabin
 - lakefront views
 - sleeps up to 6
- 700 +/- sq. ft. guest cabin
 - hot tub
 - sleeps up to 6
- Multiple large outbuildings highlighted by the 40'x60' shop and 30'x96' utility shed
- Cabin and lodge rental income
- Potential for wedding venue or corporate retreat
- Conveniently located just outside of Bismarck, MO, off Hwy. 32
- 20 miles to Farmington, MO
- 9 miles to Park Hills, MO
- 1 hour 15 minutes to St. Louis, MO



847 +/- ACRES



35 ACRES OF OPEN GROUND



2 LARGE, STOCKED LAKES



ESTABLISHED DEER BREEDING OPERATION



ROBUST PERIMETER FENCING



3,600 SQ. FT. MAIN LODGE, 3-BED/3-BATH



TWO GUEST CABINS



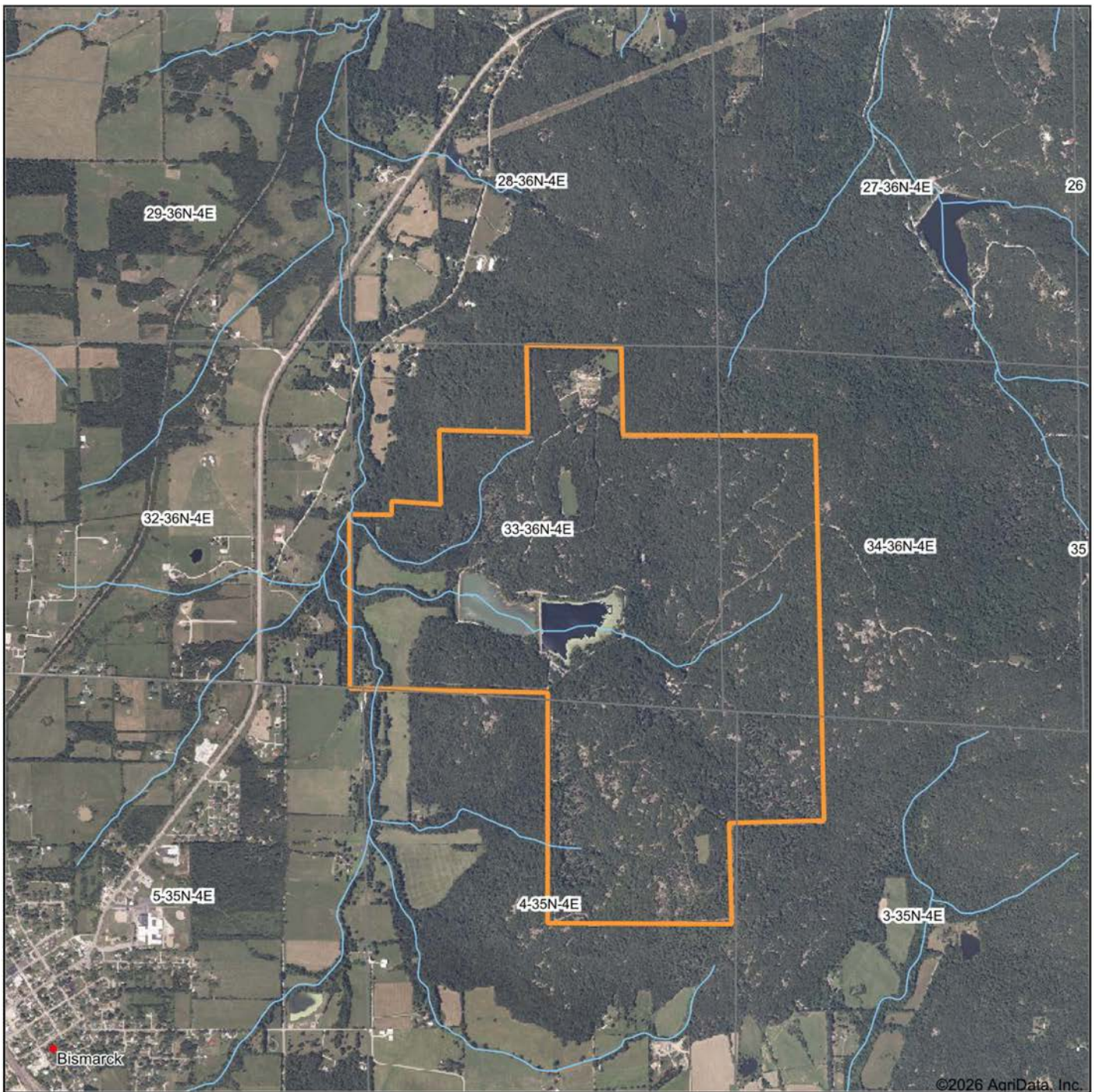
LARGE OUTBUILDINGS



ADDITIONAL PHOTOS



AERIAL MAP



Boundary Center: 37° 46' 59.77, -90° 35' 43.98



Maps Provided By:



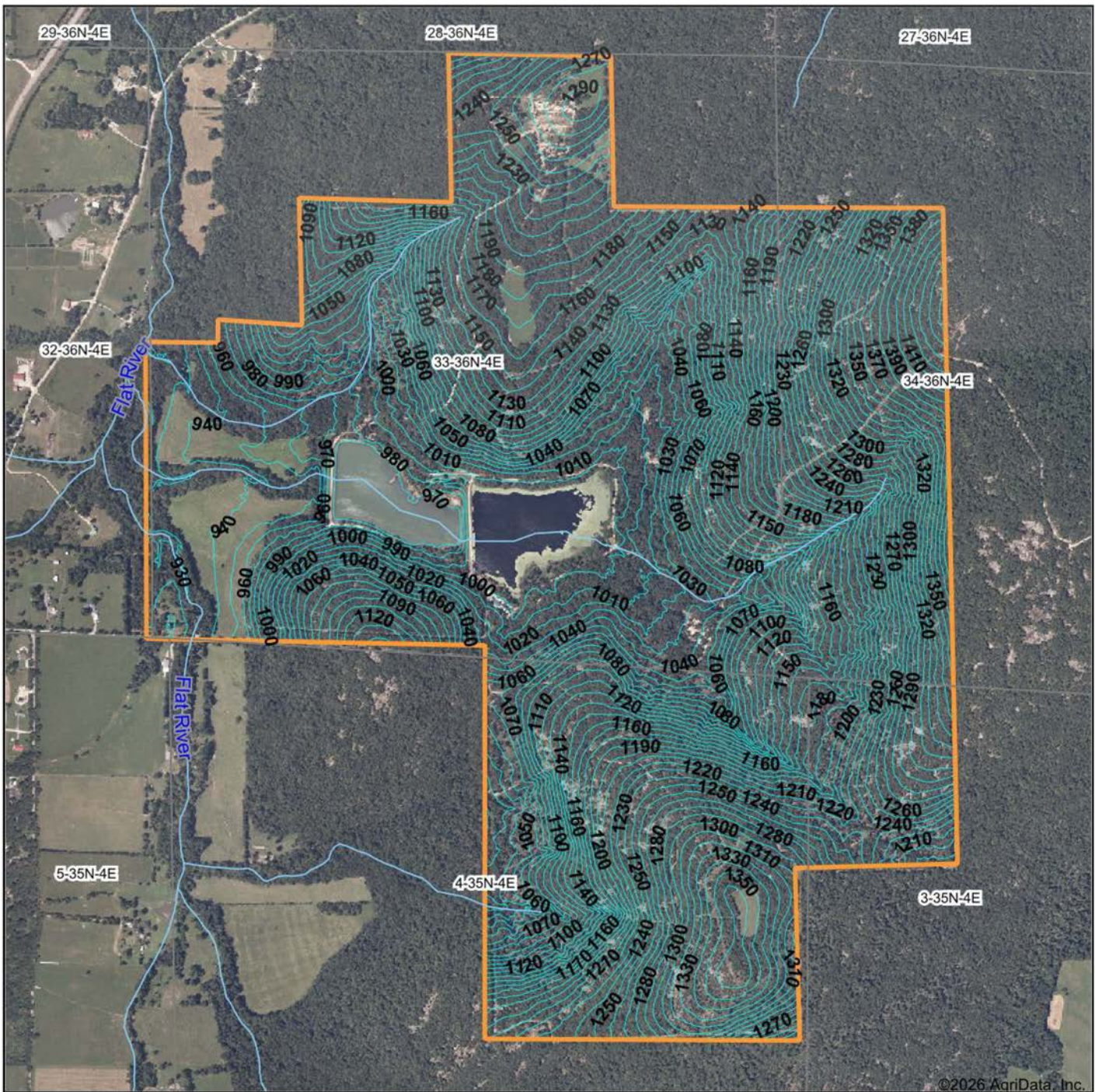
© AgriData, Inc. 2025 www.AgrIDataInc.com

33-36N-4E
St. Francois County
Missouri



3/22/2026

TOPOGRAPHY MAP



©2026 AgriData, Inc.



Maps Provided By:



© AgriData, Inc. 2025 www.AgrIDataInc.com

Source: USGS 3 meter dem

Interval(ft): 10.0

Min: 912.5

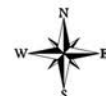
Max: 1,453.7

Range: 541.2

Average: 1,138.0

Standard Deviation: 124.93 ft

0ft 1316ft 2632ft

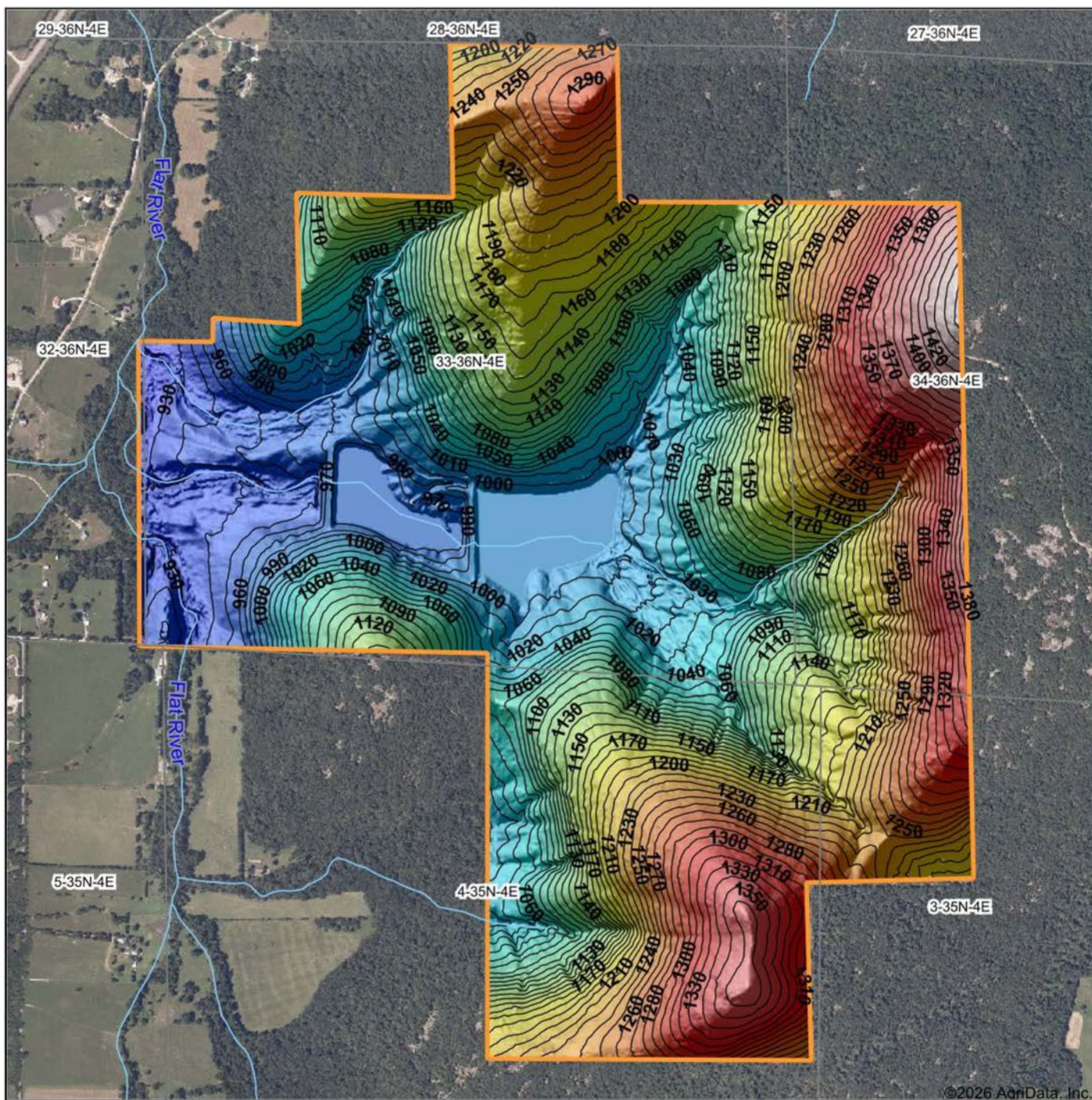


3/22/2026

33-36N-4E
St. Francois County
Missouri

Boundary Center: 37° 46' 59.77, -90° 35' 43.98

HILLSHADE MAP



Low Elevation High



Maps Provided By:



CUSTOMIZED ONLINE MAPPING
© AgriData, Inc. 2025 www.AgriDataInc.com

Source: USGS 3 meter dem

Interval(ft): 10

Min: 912.5

Max: 1,453.7

Range: 541.2

Average: 1,138.0

Standard Deviation: 124.93 ft

0ft 1286ft 2572ft

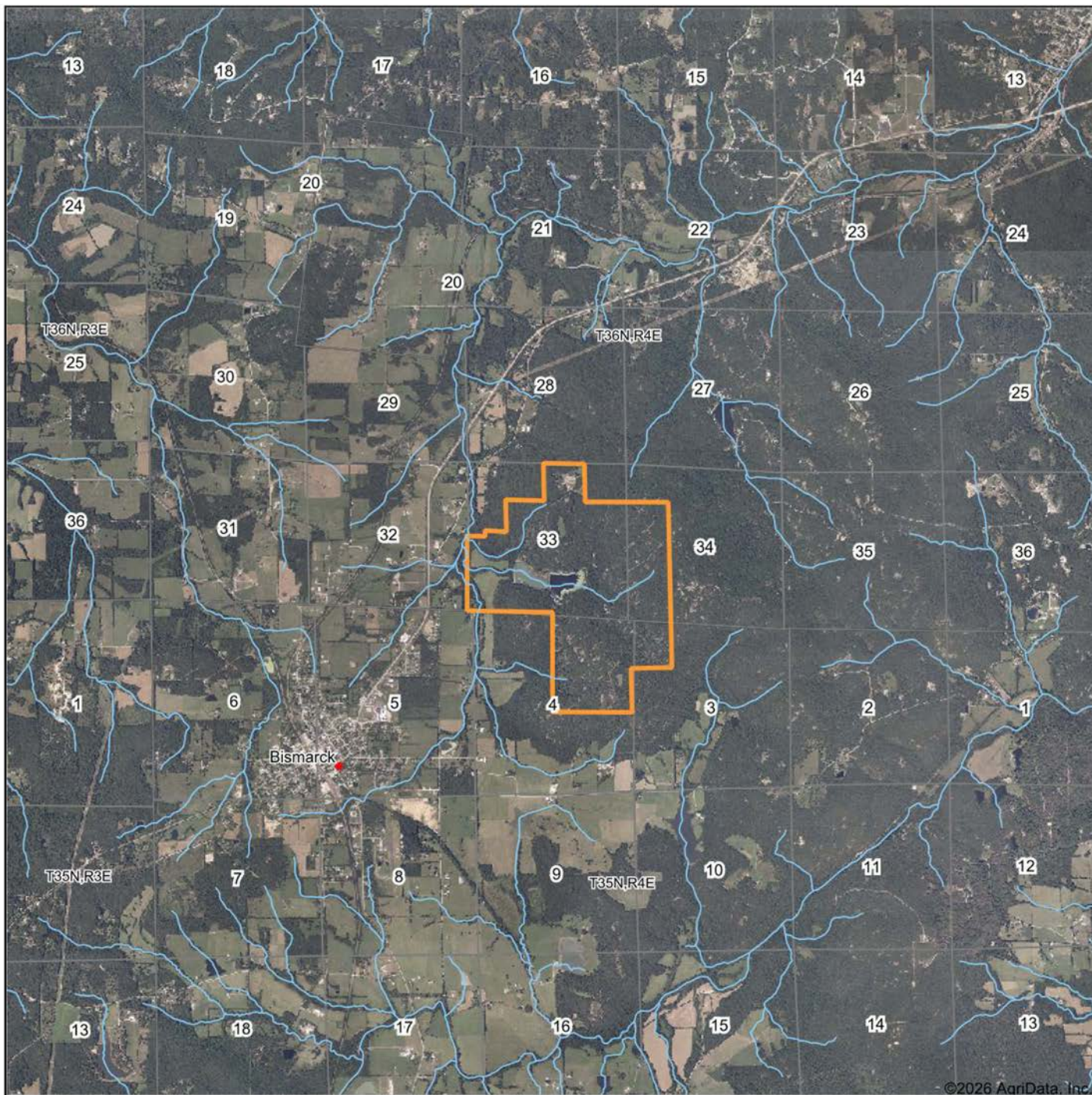


3/22/2026

33-36N-4E
St. Francois County
Missouri

Boundary Center: 37° 46' 59.77, -90° 35' 43.98

OVERVIEW MAP



Boundary Center: 37° 46' 59.77, -90° 35' 43.98



Maps Provided By:



© AgriData, Inc. 2025 www.AgriDataInc.com

33-36N-4E
St. Francois County
Missouri



3/22/2026

AGENT CONTACT

Born and raised in Ste. Genevieve, Missouri, Dane Werner developed a lifelong connection to the land through time spent on his family's farm, where he first learned the importance of stewardship, wildlife management, and rural values. Today, he lives in Waterloo, Illinois, with his wife, Jessica, and their children, Braxton, Cole, and Reese—and enjoys sharing the outdoor lifestyle he was raised by with his family.

Dane earned a Bachelor of Science in Manufacturing Engineering and Industrial Management from Southeast Missouri State University and spent 18 years in progressive leadership roles, building a reputation for integrity, communication, and putting people first. That experience shapes the way he serves landowners—by listening closely, providing clear guidance, and supporting clients through every step of the process.

A passionate outdoorsman, Dane is an avid deer and turkey hunter and a member of the NWTF. He became a landowner in his early 20s and currently owns and manages 100 acres in Southern Illinois, carefully designed for wildlife habitat and recreation. Having bought and sold multiple properties himself, Dane understands land from an owner's perspective and recognizes the factors that drive long-term value. His genuine passion for the outdoors, hands-on experience, and commitment to others make him a trusted advocate for landowners.



DANE WERNER,
LAND AGENT
573.521.9061
DWerner@MidwestLandGroup.com



MidwestLandGroup.com

This property is being offered by Midwest Land Group, LLC. 913.674.8010. All information provided by Midwest Land Group, LLC or their agents was acquired from sources deemed accurate and reliable, however we do not warrant its accuracy or completeness. Midwest Land Group, LLC assumes no liability for error, omission or investment results. Midwest Land Group, LLC. Licensed in Alabama, Arkansas, Illinois, Indiana, Iowa, Kansas, Kentucky, Louisiana, Minnesota, Mississippi, Missouri, Montana, Nebraska, Ohio, Oklahoma, South Dakota, Tennessee, Texas, Wisconsin, and Wyoming.