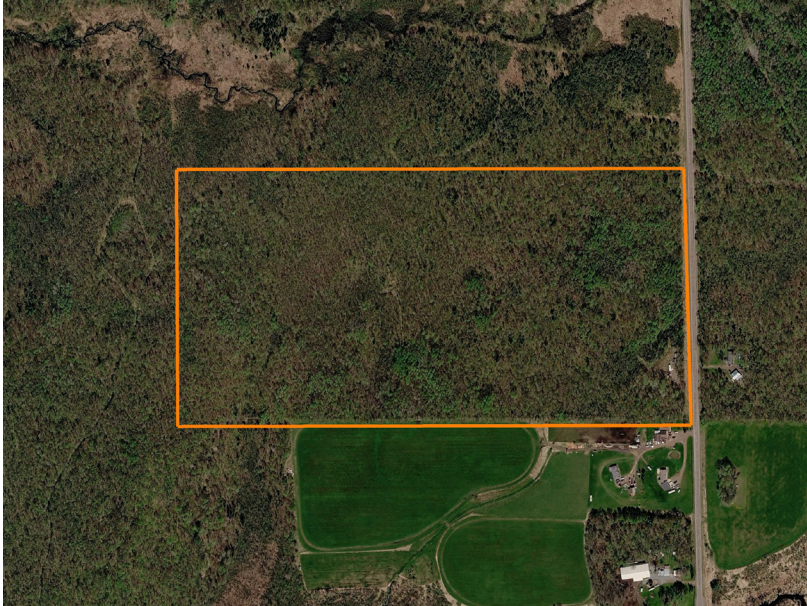


LAND FOR SALE

# 80 ACRES OF TIMBER ON PAVEMENT WITH BUILDING SITE

COUNTY: **RUSK**  
STATE: **WISCONSIN**  
ACRES: **80**



## PROPERTY FEATURES

- Located on State Highway 73
- Building site cleared
- Electric on the property
- Loaded with deer, turkey, and grouse
- Dense timber stand of mixed northern hardwoods
- East access and trail system
- Prime candidate to design a turnkey hunting farm
- Within minutes of 8,000 acres of public land
- 3 miles from a landing on the Jump River
- Less than an hour from Chippewa Falls, WI

For more information, contact:

**MATT SPETS**, Land Agent

**715.393.8387** | [MSpets@MidwestLandGroup.com](mailto:MSpets@MidwestLandGroup.com)

**MidwestLandGroup.com**

