

MIDWEST LAND GROUP PRESENTS



RANDOLPH COUNTY, MO

130 ACRES



MidwestLandGroup.com

MIDWEST LAND GROUP IS HONORED TO PRESENT

130 +/- ACRE RARE RANDOLPH COUNTY MISSOURI GEM

Here's your rare chance to own an amazing 130 +/- acres in Randolph County. It is conveniently located a half mile off blacktop and just west of Huntsville, Missouri. Talk about a great location!

As you enter the property, you will enjoy the amazing, gently rolling terrain with incredible views. Rural water and electricity run along the road frontage, making it a real possibility of building your dream home on acreage. The land features a great mix of hay pasture, woods, creek drainages, and secluded, hidden fields. The farm is currently in hay production, but could be set up well for livestock or possible tillable production. The property

has been well-maintained and is easily navigable on an established trail system. If you are looking for a hunting property, don't overlook this one. It is loaded with deer and turkey sign! The hidden fields are ideal for several hunting locations and secluded food plots. Even the northwest corner features a low spot that could be converted into a marsh for those interested in waterfowl hunting. This one truly is special and checks so many boxes. It's a must-see!

Opportunities at properties of this makeup and location don't pop up very often. Contact Skyler Wirsig at (816) 500-0168 for more information or to schedule a showing.



PROPERTY FEATURES

COUNTY: **RANDOLPH** | STATE: **MISSOURI** | ACRES: **130**

- 130 +/- acres
- Half mile off blacktop
- Great access and road frontage
- Rural water and electricity along the road
- Beautiful home build site locations
- Mix of hay pasture, woods, creeks, and pond
- Great hunting opportunities
- Secluded food plot locations
- Established trail system
- Just minutes west of Huntsville
- 9 miles west of Moberly
- Under 1 hour from Columbia

130 +/- ACRES



GREAT ACCESS AND ROAD FRONTAGE



BEAUTIFUL BUILD SITE LOCATIONS



ESTABLISHED TRAIL SYSTEM



AERIAL MAP



©2026 AgriData, Inc.

Boundary Center: 39° 26' 22.74, -92° 34' 13.49



Maps Provided By:



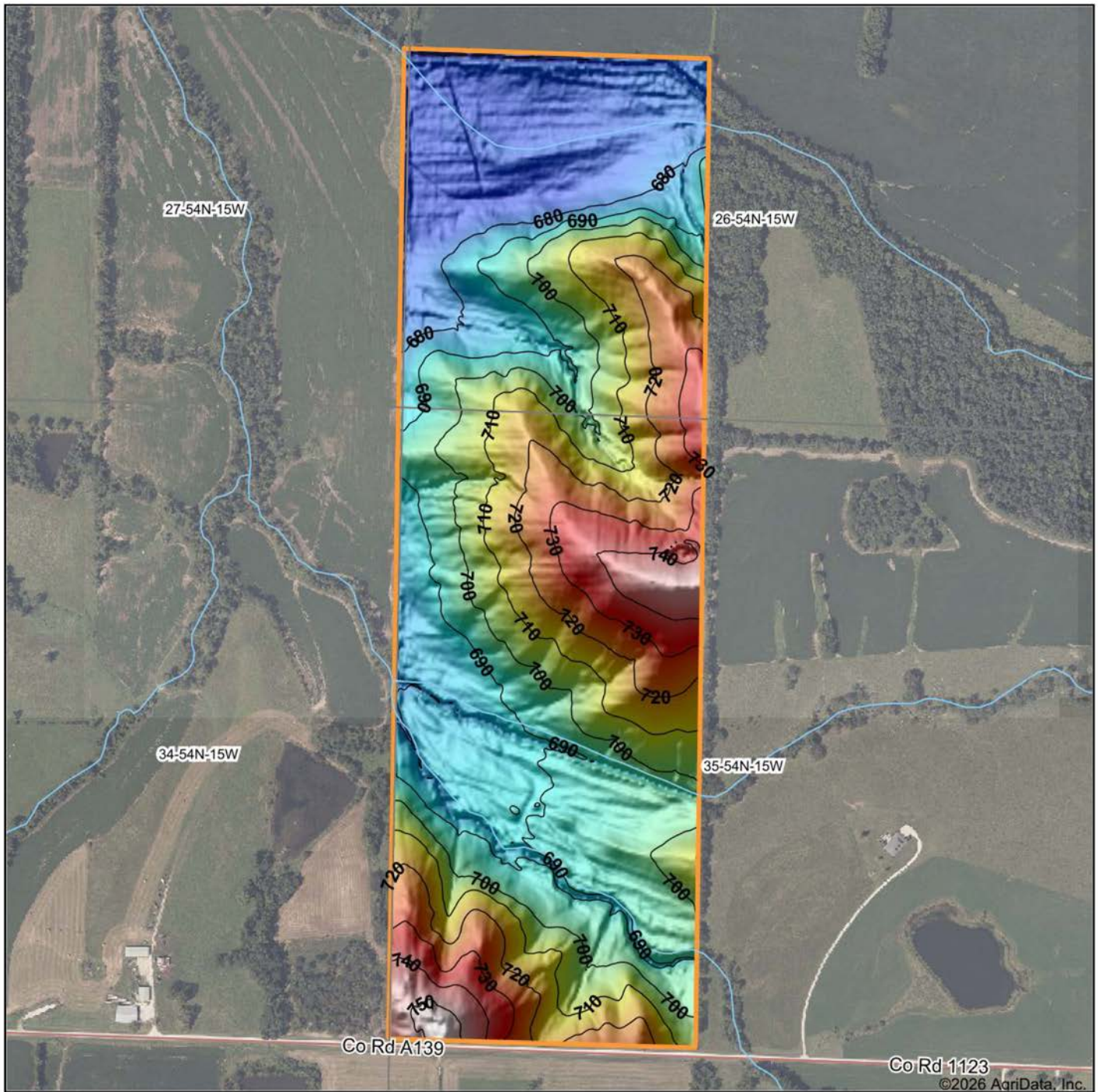
© AgriData, Inc. 2025 www.AgriDataInc.com

35-54N-15W
Randolph County
Missouri

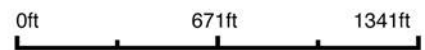


3/21/2026

TOPOGRAPHY MAP



Source: USGS 3 meter dem
 Interval(ft): 10
 Min: 667.4
 Max: 754.9
 Range: 87.5
 Average: 701.1
 Standard Deviation: 20.21 ft



35-54N-15W
Randolph County
Missouri

Boundary Center: 39° 26' 22.74, -92° 34' 13.49

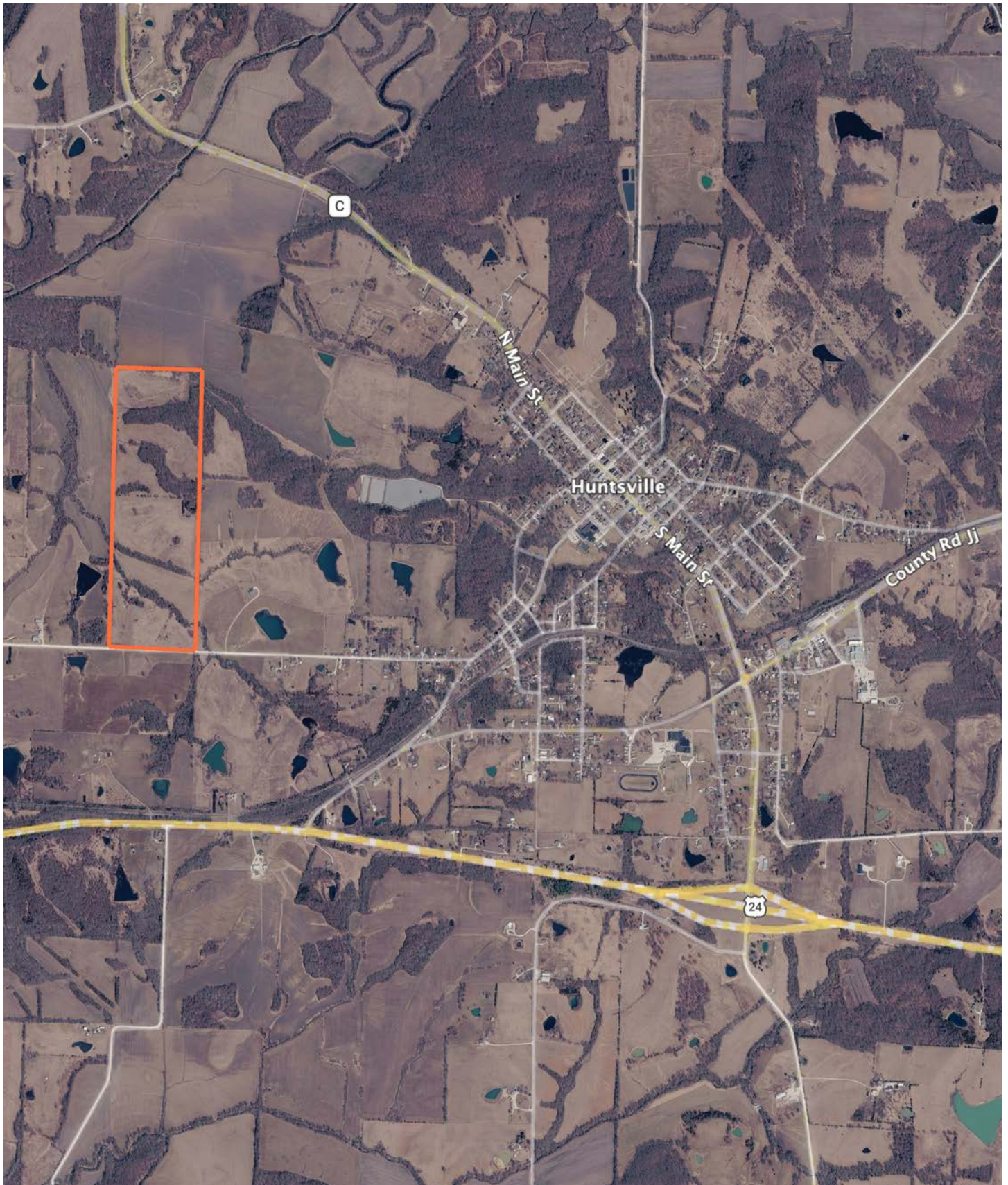


Maps Provided By:



© AgriData, Inc. 2025 www.AgrIDataInc.com

OVERVIEW MAP



AGENT CONTACT

Skyler Wirsig is a seasoned steward of the land with a firm focus on developing and managing agricultural properties. Over 15 years, he has gained invaluable experience filming and hunting for the Outdoor Channel's Heartland Bowhunter, which has earned several accolades under his watch.

Hailing from Kansas City, Missouri, Skyler graduated from William Jewell College with degrees in Business Administration and Critical Thought & Inquiry. His previous role as an operations manager, handling sales and customer relationships across 20 countries, enhances his effectiveness as a real estate agent.

A dedicated sportsman, Skyler proudly holds the Archery Missouri State Record for an 8-point whitetail. Despite his professional accomplishments, he remains approachable, enjoying fishing, sports, and travel with his family. Skyler also volunteers for the Wounded Warriors in Action Foundation. Residing on his farm in Grain Valley, Missouri, with his wife and sons, Skyler brings a wealth of expertise and a down-to-earth attitude to land sales in the Midwest.



SKYLER WIRSIG

LAND AGENT

816.500.0168

SWirsig@MidwestLandGroup.com



MidwestLandGroup.com

This property is being offered by Midwest Land Group, LLC. 913.674.8010. All information provided by Midwest Land Group, LLC or their agents was acquired from sources deemed accurate and reliable, however we do not warrant its accuracy or completeness. Midwest Land Group, LLC assumes no liability for error, omission or investment results. Midwest Land Group, LLC. Licensed in Alabama, Arkansas, Illinois, Indiana, Iowa, Kansas, Kentucky, Louisiana, Minnesota, Mississippi, Missouri, Montana, Nebraska, Ohio, Oklahoma, South Dakota, Tennessee, Texas, Wisconsin, and Wyoming.